



# IVF TESTED **PLASTICWARE** FOR IVD USE INSTRUCTION FOR USE

Top quality Plasticware approved by scientists  
and supported by the test results for each lot.



## Contents

Precautions .....	3
Oosafe® 4 Well Dish, Treated Surface .....	4
Oosafe® 4 Well Dish, Non-Treated Surface .....	5
Oosafe® 6 Well Dish with Straw Holder, Non-Treated Surface .....	6
Oosafe® Center Well Dish with Two Compartments, Non-Treated Surface.....	7
Oosafe® Center Well Dish with Two Compartments, Label Area Grip, Non-Treated Surface .....	8
Oosafe® Center Well Dish, Non-Treated Surface .....	9
Oosafe® 50 mm Dish, Thin bottom, Non-Treated Surface.....	10
Oosafe® 50 mm Dish, Thin bottom, Non-Treated Surface.....	11
Oosafe® Synergy Dish, Treated Surface .....	12
Oosafe® 35 mm Dish, High Wall, Treated Surface.....	13
Oosafe® 35 mm Dish, Non-Treated Surface .....	14
Oosafe® 100 mm Dish, Non-Treated Surface .....	15
Oosafe® 60 mm Dish, Non-Treated Surface.....	16
Oosafe® PS Centrifuge Tube, 15 ml, Non-Treated Surface.....	17
Oosafe® Snap-Cap Tube, Non-Treated Surface .....	18
Oosafe® Andrology Tube, Non-Treated Surface .....	19
Oosafe® Sperm Collection Cup, 80 ml, Non-Treated Surface.....	20
Additional information:.....	21

## Precautions

### Warning!

**Specimens that have been stored or cultured in IVD line of Oosafe® Plasticware products shall never be transferred into the human body.**

### Attention!

- Check the expiration date on the label.
- Optimal storage temperature is room temperature or 15 °C – 30 °C.
- Only for SINGLE use!
- The product is STERILE only if the packaging is intact. After opening the sealing, the product/products cannot stay sterile and cannot be stored anymore. The product/products should be either used up or disposed off once the packaging is opened (and the products are off-gassed).
- Only use optically perfect and undamaged devices.
- Discard the product immediately if the primary packaging is damaged.
- Avoid repeated opening and closing of Oosafe® Tubes to prevent excessive wear and tear. Open and close the Oosafe® Tubes with only gentle movement.
- Disposal: Oosafe® Plasticware is recyclable. For the sake of the environment, we recommend disposal of dishes according to the local regulations.



- Plastic is inflammable, KEEP AWAY FROM FIRE!



**Adverse Effects:** No adverse effects observed or reported till now.

**Contraindications:** No contraindications observed or reported till now.

---

## Oosafe® 4 Well Dish, Treated Surface

---

Description (L x W x H) (mm)	Prod. No.	Qty/pc	Qty/cs
65.8 x 65.8 x 13.4	OOPW-FW03	4	120

### Intended use-

**General Intended Use:** For the examination of specimens, including blood and tissue donations, derived from the human body.

**Specific Intended Use:** Aid in the culturing of cells and observation of cells growth, which need to grow adherently.

**Product compartments:** 4

### **Dish Volumes:**

Well compartment 1: 1.8 ml

Well compartment 2: 1.8 ml

Well compartment 3: 1.8 ml

Well compartment 4: 1.8 ml



### Safety

Observe the expiry date and the storage condition on the label.

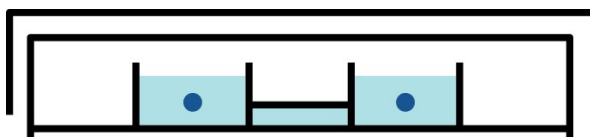
Do only use optically perfect and undamaged plasticware.

### Handling

The packaging of Oosafe® 4 Well Dish Treated Surface is breathable material with no VOC release. After opening the sealing, the dishes can be directly put into use.

To culture the cells, fill the wells with medium, and place the dish in the incubator or in the heating unit prior to use. The recommended medium volume per well is 0,5 ml if used in conjunction with oil, otherwise 1.2 ml.

When the dish is covered by the lid, the air can still go in and out of the dish.



**Discard after use.**

**Storage:** Store at room temperature.

<sup>1</sup> L x W x H: Length x Width x Height

---

## Oosafe® 4 Well Dish, Non-Treated Surface

---

Description (L x W x H) (mm)	Prod. No.	Qty/pc	Qty/cs
65.8 x 65.8 x 13.4	OOPW-FW04	4	120

### **Intended use.**

**General Intended Use:** For the examination of specimens, including blood and tissue donations, derived from the human body.

**Specific Intended Use:** Aid in the culturing and observation of cells growth, which need to grow in a medium without attaching to the surface.

**Product compartments:** 4

**Dish Volumes:**

- Well compartment 1: 1.8 ml
- Well compartment 2: 1.8 ml
- Well compartment 3: 1.8 ml
- Well compartment 4: 1.8 ml



### **Safety**

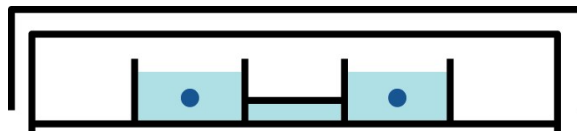
Observe the expiry date and the storage condition on the label.  
Do only use optically perfect and undamaged plasticware.

### **Handling**

The package of Oosafe® 4 Well Dish Non-Treated Surface is breathable material with no VOC release. After opening the sealing, the dishes can be directly put into use.

To culture the cells, fill the wells with medium, and place the dish in the incubator or in the heating unit prior to use. The recommended medium volume per well is 0,5ml if used in conjunction with oil, otherwise 1.2 ml.

When the dish is covered by the lid, the air can still go in and out of the dish.



**Discard after use.**

**Storage:** Store at room temperature.

---

## Oosafe® 6 Well Dish with Straw Holder, Non-Treated Surface

---

Description (L x W x H) (mm)	Prod. No.	Qty/pc	Qty/cs
77.2 x 64.4 x 12.4	OOPW-SW02	1	240
77.2 x 64.4 x 12.4	OOPW-SW03	4	120

### Intended use

**General Intended Use:** For the examination of specimens, including blood and tissue donations, derived from the human body.

**Specific Intended Use:** Aid in the culturing and observation of cells growth. Special conical flat bottom for better optical visualization of smaller cells.



Product compartments: 6

Dish Volumes:

- Well compartment 1: 0.4 ml
- Well compartment 2: 0.4 ml
- Well compartment 3: 0.4 ml
- Well compartment 4: 0.4 ml
- Well compartment 5: 0.4 ml
- Well compartment 6: 0.4 ml

### Safety

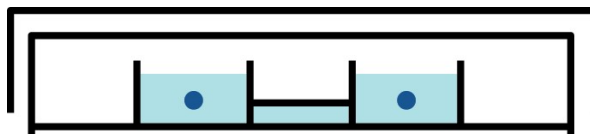
Observe the expiry date and the storage condition on the label.  
Do only use optically perfect and undamaged plasticware.

### Handling

The package of Oosafe® 6 Well Dish with Straw Holder including single pack and multipack, is breathable material with no VOC release. After opening the sealing, the dishes can be directly put into use.

To culture the cells, fill the wells with medium, and place the dish in the incubator or in the heating unit prior to use. The recommended medium volume per well is 0,15 ml if used in conjunction with oil, otherwise 0.3 ml.

When the dish is covered by the lid, the air can still go in and out of the dish.



**Discard after use.**

**Storage:** Store at room temperature.

---

## Oosafe® Center Well Dish with Two Compartments, Non-Treated Surface

---

Description (D, H) (mm)	Prod. No.	Qty/pc	Qty/cs
59.0, 15.0	OOPW-CW03	10	500

### Intended use.

**General Intended Use:** For the examination of specimens, including blood and tissue donations, derived from the human body.

**Specific Intended Use:** Aid in 3 culturing groups of cell culture with different chamber sizes. As well as examining the cells and observing the growth of the cells under the same conditions.

**Product compartments: 3**

### **Dish Volumes:**

Well compartment 1: 3 ml

Well compartment 2: 5 ml

Well compartment 3: 5 ml



### Safety

Observe the expiry date and the storage condition on the label.  
Do only use optically perfect and undamaged plasticware.

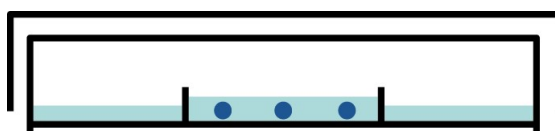
### Handling

Prior to use, open the sealing and leave the dishes to off-gas before use (unless it is a single-pack dish).

Oosafe® Center Well Dish with Two Compartments packages may be off-gassed by partially opening the sleeve or taking the dishes entirely out of the packaging. In either case, the opened sleeves or dishes must be kept in a sterile environment at room temperature and humidity. The dishes should remain covered with the lids until they are loaded with the sample and medium.

Fill the center well and the outer chambers with equilibrated medium according to your protocol. For well compartment 1 the recommended volume is 1 ml if used in conjunction with oil, otherwise 2 ml. For well compartment 2 and 3 the recommended volume is 2 ml if used in conjunction with oil, otherwise 4 ml.

When the dish is covered by the lid, the air can still go in and out of the dish.



**Discard after use.**

**Storage:** Store at room temperature.

---

Oosafe® Center Well Dish with Two Compartments, Label Area Grip, Non-Treated Surface

---

Description (D, H) (mm)	Prod. No.	Qty/pc	Qty/cs
59.0, 15.0	OOPW-CW05	10	500

**Intended use.**

**General Intended Use:** For the examination of specimens, including blood and tissue donations, derived from the human body.

**Specific Intended Use:** Aid in 3 culturing groups of cell culture with different chamber sizes. As well as examining the cells and observing the growth of the cells under the same conditions.

**Product compartments: 3**

**Dish Volumes:**

- Well compartment 1: 3 ml
- Well compartment 2: 5 ml
- Well compartment 3: 5 ml



**Safety**

Observe the expiry date and the storage condition on the label.  
Do only use optically perfect and undamaged plasticware.

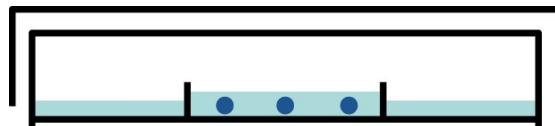
**Handling**

Prior to use, open the sealing and leave the dishes to off-gas before use (unless it is a single-pack dish).

Oosafe® Center Well Dish with Two Compartments, Label Area Grip packages may be off-gassed by partially opening the sleeve or taking the dishes entirely out of the packaging. In either case, the opened sleeves or dishes must be kept in a sterile environment at room temperature and humidity. The dishes should remain covered with the lids until they are loaded with the sample and medium.

Fill the center well and the outer chambers with equilibrated medium according to your protocol. For well compartment 1 the recommended volume is 1 ml if used in conjunction with oil, otherwise 2 ml. For well compartment 2 and 3 the recommended volume is 2 ml if used in conjunction with oil, otherwise 4 ml.

When the dish is covered by the lid, the air can still go in and out of the dish.



**Discard after use.**

**Storage:** Store at room temperature.



---

## Oosafe® Center Well Dish, Non-Treated Surface

---

Description (D, H) (mm)	Prod. No.	Qty/pc	Qty/cs
56.0, 15.0	OOPW-CW08	10	50

### Intended use.

**General Intended Use:** For the examination of specimens, including blood and tissue donations, derived from the human body.

**Specific Intended Use:** Aid in 2 culturing groups of cell culture with different chamber sizes. As well as examining the cells and observing the growth of the cells under the same conditions.

### **Product compartments: 3**

Dish Volumes:

Well compartment 1: 3 ml

Well compartment 2: 10 ml



### Safety

Observe the expiry date and the storage condition on the label.  
Do only use optically perfect and undamaged plasticware.

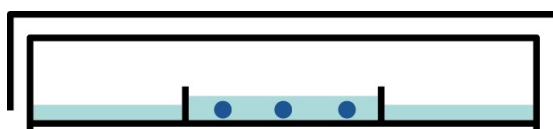
### Handling

Prior to use, open the sealing and leave the dishes to off-gas before use (unless it is a single-pack dish).

Oosafe® Center Well Dish packages may be off-gassed by partially opening the sleeve or taking the dishes entirely out of the packaging. In either case, the opened sleeves or dishes must be kept in a sterile environment at room temperature and humidity. The dishes should remain covered with the lids until they are loaded with the sample and medium.

Fill the center well and the outer chamber with equilibrated medium according to your protocol. For well compartment 1 the recommended volume is 1 ml if used in conjunction with oil, otherwise 2 ml. For well compartment 2 the recommended volume is 2 ml if used in conjunction with oil, otherwise 4 ml.

When the dish is covered by the lid, the air can still go in and out of the dish.



**Discard after use.**

**Storage:** Store at room temperature.

---

## Oosafe® 50 mm Dish, Thin bottom, Non-Treated Surface

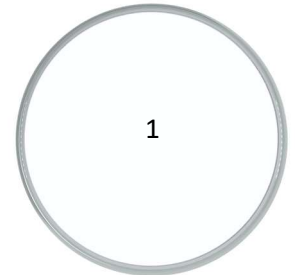
---

Description (D, H) (mm)	Prod. No.	Qty/pc	Qty/cs
53.2, 9.5	OOPW-IC06	10	500

### Intended Use

**General Intended Use:** For the examination of specimens, including blood and tissue donations, derived from the human body.

**Specific Intended Use:** Aid in examining the quality of a sample under microscope e.g. sperm, allows for better imaging under microscope at higher magnification.



### **Product compartments: 1**

Well Volumes: 12 ml

### Safety

Observe the expiry date and the storage condition on the label.  
Do only use optically perfect and undamaged plasticware.

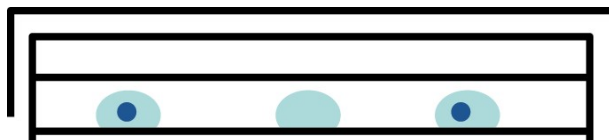
### Handling

Prior to use, open the sealing and leave the dishes to off-gas before use (unless it is a single-pack dish).

Oosafe® 50 mm Dish, Label Area Grip packages may be off-gassed by partially opening the sleeve or taking the dishes entirely out of the packaging. In either case, the opened sleeves or dishes must be kept in a sterile environment at room temperature and humidity. The dishes should remain covered with the lids until they are loaded with the sample and medium.

Place small droplets on the bottom of the dish. Recommended volume per drop is 5 - 50 µl according to the use purpose. Overlay the drop with oil. The recommended volume is 5 ml.

When the dish is covered by the lid, the air can still go in and out of the dish.



**Discard after use.**

**Storage:** Store at room temperature.

---

## Oosafe® 50 mm Dish, Thin bottom, Non-Treated Surface

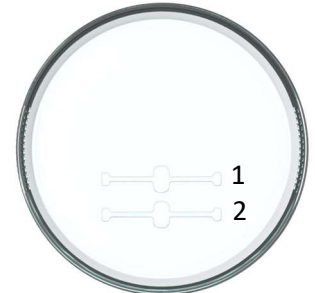
---

Description (D, H) (mm)	Prod. No.	Qty/pc	Qty/cs
53.2, 9.5	OOPW-IC07	10	500

### Intended Use

**General Intended Use:** For the examination of specimens, including blood and tissue donations, derived from the human body.

**Specific Intended Use:** Aid in examining the quality of a sample under microscope e.g. sperm, allows for better imaging under microscope at higher magnification.



### **Product compartments: 1**

Dish Volumes:

Well compartment: 13.3 ml

Indentation Volume: 15.8 µl for each

### Safety

Observe the expiry date and the storage condition on the label.  
Do only use optically perfect and undamaged plasticware.

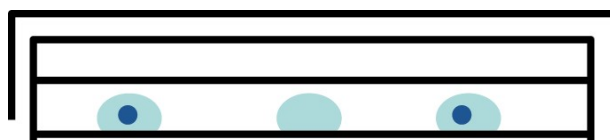
### Handling

Prior to use, open the sealing and leave the dishes to off-gas before use (unless it is a single-pack dish).

Oosafe® 50 mm Dish, Label Area Grip packages may be off-gassed by partially opening the sleeve or taking the dishes entirely out of the packaging. In either case, the opened sleeves or dishes must be kept in a sterile environment at room temperature and humidity. The dishes should remain covered with the lids until they are loaded with the sample and medium.

Place small droplets on the bottom of the dish. Recommended volume per drop is 5 - 50 µl according to the use purpose. Overlay the drop with oil. The recommended volume is 5 ml.

When the dish is covered by the lid, the air can still go in and out of the dish.



**Discard after use.**

**Storage:** Store at room temperature.

---

## Oosafe® Synergy Dish, Treated Surface

---

Description (L x W x H) (mm)	Prod. No.	Qty/pc	Qty/cs
65.8 x 65.8 x 15.1	OOPW-SD04	4	120

### Intended Use

**General Intended Use:** For the examination of specimens, including blood and tissue donations, derived from the human body.

**Specific Intended Use:** The dish is suited for group culturing.

### **Dish Volumes:**

Each well compartment (A, B and C): ~ 160 µl.



### Safety

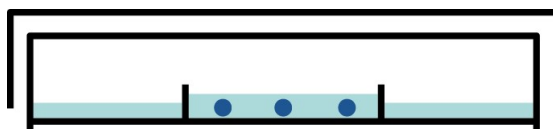
Observe the expiry date and the storage condition on the label.  
Do only use optically perfect and undamaged plasticware.

### Handling

The packaging of Oosafe® Synergy Dish Treated is breathable material with no VOC release after opening. After opening the sealing, the dishes can be directly put into use. The opened sleeves or dishes must be kept in a sterile environment at room temperature and humidity. The dishes should remain covered with the lids until they are loaded with the sample and medium.

Fill the wells of the dish with equilibrated medium according to your protocol and cover the dish with oil.

When the dish is covered by the lid, the air can still go in and out of the dish.



**Discard after use.**

**Storage:** Store at room temperature.

---

## Oosafe® 35 mm Dish, High Wall, Treated Surface

---

Description (D, H) (mm)	Prod. No.	Qty/pc	Qty/cs
40, 13.5	OOPW-TF05	10	500

### Intended use.

**General Intended Use:** For the examination of specimens, including blood and tissue donations, derived from the human body.

**Specific Intended Use:** Aid in small volume cells culturing and observation of cells growth under microscope.



**Product compartments:** 1

**Dish Volumes:**

Well compartment 1: 8 ml

### Safety

Observe the expiry date and the storage condition on the label.  
Do only use optically perfect and undamaged plasticware.

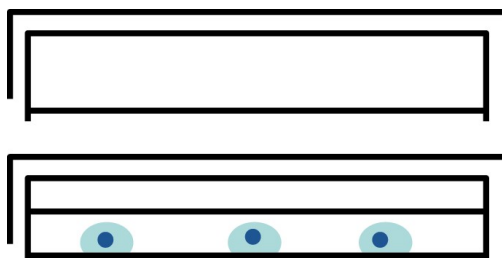
### Handling

Prior to use, open the sealing and leave the dishes to off-gas before use.

Oosafe® 35 mm Wall Dish, High Wall, treated packages may be off-gassed by partially opening the sleeve or taking the dishes entirely out of the packaging. In either case, the opened sleeves or dishes must be kept in a sterile environment at room temperature and humidity. The dishes should remain covered with the lids until they are loaded with the sample and medium.

Place small droplets on the bottom of the dish. The recommended volume per drop is 20-50 µl. Overlay the drop with oil. The recommended volume is 5ml. It is also possible to use the dish entirely instead of only making drops. Use the 2 finger grips to hold the dish securely.

When the dish is covered by the lid, the air can still go in and out of the dish.



**Discard after use.**

**Storage:** Store at room temperature.

---

## Oosafe® 35 mm Dish, Non-Treated Surface

---

Description (D, H) (mm)	Prod. No.	Qty/pc	Qty/cs
40.0, 13.5	OOPW-TF06	10	500

### Intended Use:

**General Intended Use:** For the examination of specimens, including blood and tissue donations, derived from the human body.

**Specific Intended Use:** Aid in small volume cells culturing and observation of cells growth under microscope.



**Product compartments: 1**

**Dish Volumes:**

Well compartment 1:8 ml.

### Safety

Observe the expiry date and the storage condition on the label.  
Do only use optically perfect and undamaged plasticware.

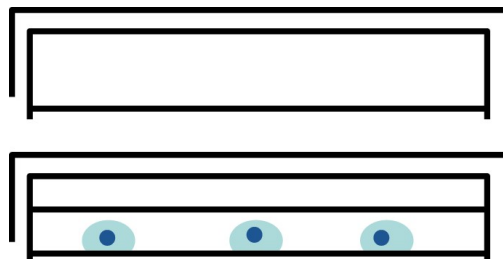
### Handling

Prior to use, open the sealing and leave the dishes off-gas before use.

Oosafe® 35 mm Wall Dish, High Wall, Label Area Grip packages may be off-gassed by partially opening the sleeve or taking the dishes entirely out of the packaging. In either case, the opened sleeves or dishes must be kept in a sterile environment at room temperature and humidity. The dishes should remain covered with the lids until they are loaded with the sample and medium.

Place small droplets on the bottom of the dish. The recommended volume per drop is 20-50 µl. Overlay the drop with oil. The recommended volume is 5ml. It is also possible to use the dish entirely instead of only making drops. Use the 2 finger grips to hold the dish securely.

When the dish is covered by the lid, the air can still go in and out of the dish.



**Discard after use.**

**Storage:** Store at room temperature.

---

## Oosafe® 100 mm Dish, Non-Treated Surface

---

Description (D, H) (mm)	Prod. No.	Qty/pc	Qty/cs
92.4, 19.9	OOPW-HD10	10	250

### **Intended Use:**

**General Intended Use:** For the examination of specimens, including blood and tissue donations, derived from the human body.

**Specific Intended Use:** Aid in large volume cells culturing and observation of cells growth under microscope.

**Product compartments:** 1

**Dish Volumes:**

Well compartment 1: 105 ml



### **Safety**

Observe the expiry date and the storage condition on the label.

Do only use optically perfect and undamaged plasticware.

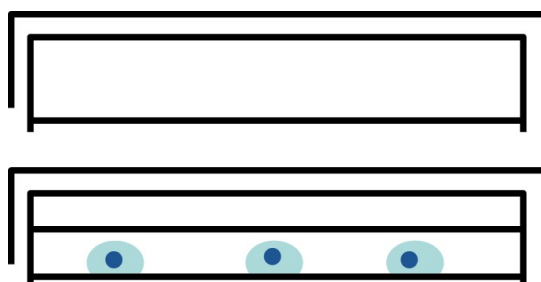
### **Handling**

Prior to use, open the sealing and leave the dishes to off-gas before use.

Oosafe® 100 mm Dish packages may be off-gassed by partially opening the sleeve or taking the dishes entirely out of the packaging. In either case, the opened sleeves or dishes must be kept in a sterile environment at room temperature and humidity. The dishes should remain covered with the lids until they are loaded with the sample and medium.

Place small droplets on the bottom of the dish. The recommended volume per drop is 20-50 µl. Overlay the drop with oil. The recommended volume is 50 ml. It is also possible to use the dish entirely instead of only making drops.

When the dish is covered by the lid, the air can still go in and out of the dish.



**Discard after use.**

**Storage:** Store at room temperature.

---

## Oosafe® 60 mm Dish, Non-Treated Surface

---

Description (D, H) (mm)	Prod. No.	Qty/pc	Qty/cs
59, 15	OOPW-ST06	10	500

### Intended Use:

**General Intended Use:** For the examination of specimens, including blood and tissue donations, derived from the human body.

**Specific Intended Use:** Aid in medium volume cells culturing and observation of cells growth under microscope.

**Product compartments:** 1

**Dish Volumes:**

Well compartment 1: 25 ml



### Safety

Observe the expiry date and the storage condition on the label.

Do only use optically perfect and undamaged plasticware.

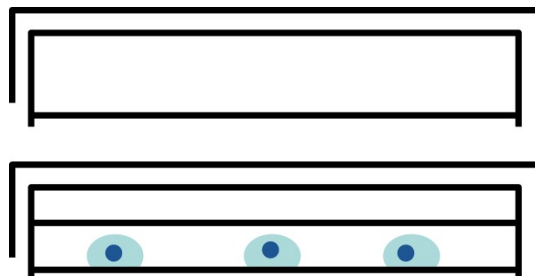
### Handling

Prior to use, open the sealing and leave the dishes to off-gas before use.

Oosafe® 60 mm Dish, Label Area Grip packages may be off-gassed by partially opening the sleeve or taking the dishes entirely out of the packaging. In either case, the opened sleeves or dishes must be kept in a sterile environment at room temperature and humidity. The dishes should remain covered with the lids until they are loaded with the sample and medium.

Place small droplets on the bottom of the dish. The recommended volume per drop is 20-50 µl. Overlay the drop with oil. The recommended volume is 13 ml. It is also possible to use the dish entirely instead of only making drops.

When the dish is covered by the lid, the air can still go in and out of the dish.



**Discard after use.**

**Storage:** Store at room temperature.



---

## Oosafe® PS Centrifuge Tube, 15 ml, Non-Treated Surface

---

Description (volume) (ml)	Prod. No.	Qty/pc	Qty/cs
15 ml	OOPW-CT05	5	500

### Intended Use

**General Intended Use:** For the examination of specimens, including blood and tissue donations, derived from the human body.

**Specific Intended Use:** Aid in centrifugation of samples and examination after the centrifugation.

Recommended RCF x g:  $\geq 3000$  G

\* RCF (Relative centrifugal force)

Ensure proper fitment with adapters to prevent breakage.

### Safety

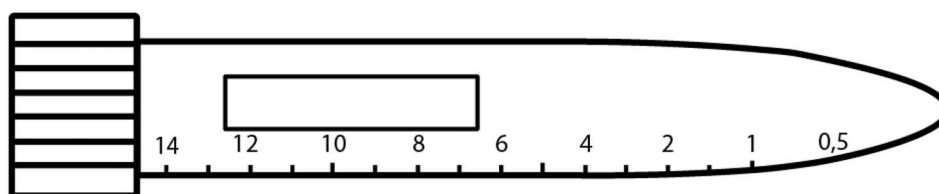
Observe the expiry date and the storage condition on the label.

Do only use optically perfect and undamaged plasticware.

### Handling

The package of Oosafe® PS Centrifuge Tube, 15 ml is breathable material with no VOC release. After opening the sealing, the tube can be directly put into use.

Prepare samples according to the protocol applied. The tube can be filled up to 15 ml of preferred sample. Leak proof design ensures sample stability when used in centrifugation procedures. Close the cap tightly before centrifuge and remember to write detailed information on the designated area of the tube. Do not use any cracked or deformed tubes.



**Discard after use.**

**Storage:** Store at room temperature.

---

## Oosafe® Snap-Cap Tube, Non-Treated Surface

---

Description (volume) (ml)	Prod. No.	Qty/pc	Qty/cs
14ml	OOPW-OT10	10	500

### Intended use

**General Intended Use:** For the examination of specimens, including blood and tissue donations, derived from the human body.

**Specific Intended Use:** Aid in collection of samples under negative pressure or by using ordinary methods for the purpose of examination of samples after collection, in terms of temperature effect on samples.

**Product compartments:** 1

**Tube Volumes:**

Tube compartment 1: 14 ml

### Safety

Observe the expiry date and the storage condition on the label.

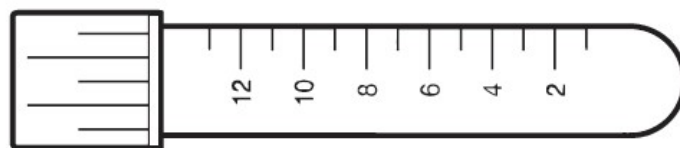
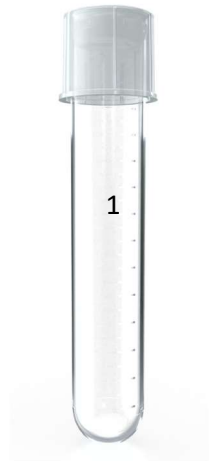
Do only use optically perfect and undamaged plasticware.

### Handling

The package of Oosafe® Snap-Cap Tube is breathable material with no VOC release. After opening the sealing, the tube can be directly put into use.

Although it can be filled up to 14 ml, the recommended volume for use is between 0.5 ml to 12 ml. Follow the scale on the tube.

The cap can be loosely put over the tube to keep the gas changing. The cap can also be pushed down thoroughly for tight sealing.



**Discard after use.**

**Storage:** Store at room temperature.

---

## Oosafe® Andrology Tube, Non-Treated Surface

---

Description (volume) (ml)	Prod. No.	Qty/pc	Qty/cs
5ml	OOPW-AT10	10	500

### Intended use.

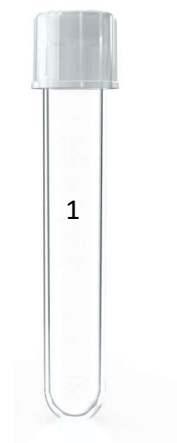
**General Intended Use:** For the examination of specimens, including blood and tissue donations, derived from the human body.

**Specific Intended Use:** Aid in andrology use, examination and diagnosis of infertility with or without gassing.

**Product compartments: 1**

### **Tube Volumes:**

Tube compartment 1: 5 ml



### Safety

Observe the expiry date and the storage condition on the label.

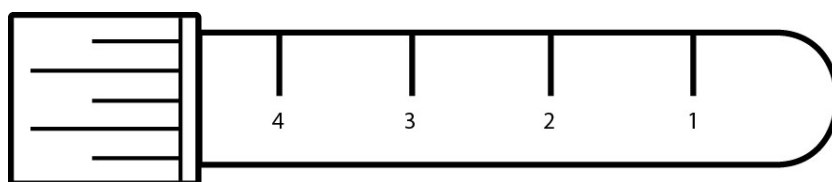
Do only use optically perfect and undamaged plasticware.

### Handling

The package of Oosafe® Andrology Tube is breathable material with no VOC release. After opening the sealing, the tube can be directly put into use.

Although it can be filled up to 5 ml, the recommended volume for use is under 4 ml. Follow the scale on the tube.

The cap can be loosely put over the tube for gas changing. The cap can also be pushed down thoroughly for tight sealing.



**Discard after use.**

**Storage:** Store at room temperature.

---

## Oosafe® Sperm Collection Cup, 80 ml, Non-Treated Surface

---

Description (volume) (ml)	Prod. No.	Qty/pc	Qty/cs
80 ml	OOPW-SC01	1	70

### Intended Use

**General Intended Use:** For the examination of specimens, including blood and tissue donations, derived from the human body.

**Specific Intended Use:** Aid in collection of sperm and examination of the quality of sperm, in terms of quantitative and qualitative measurements e.g. pH, color, liquidity.



**Product compartments:** 1

**Dish Volumes:**

Cup compartment 1: 80 ml

### Safety

Observe the expiry date and the storage condition on the label. Do only use optically perfect and undamaged plasticware.

### Handling

The packaging of Oosafe® Sperm Collection Cup is breathable material with no VOC release. After opening the sealing, the cup can be directly put into use.

Screw the cap properly to avoid leaking after collecting the sperm.

The cup and the cap are made of Polypropylene. Do not squeeze the cup and the cap too much, otherwise leaking may happen by reason of the cap not being closed properly.











**Discard after use.**

**Storage:** Store at room temperature.

## Additional information:

Oosafe® Plasticware instructions for use are made according to the requirements of Directive 98/79/EC and supplement information provided on the labels of the products. These instructions for use are issued by taking into account the training and knowledge of the potential users.

### Explanation of the symbols on the labels according to the standard ISO 15223-1:2021:

SYMBOL	EXPLANATION
	Manufacturer
	Batch code
	Use-by date
	Sterilized using irradiation
	Consult instructions for use
	Do not re-use
	Conformity Mark
	In vitro diagnostic medical device



If you have any questions, please use the information below to contact us:



Ryttermarken 2  
DK-3520 Farum, Denmark  
Phone: +45 3940 2503  
E-mail: [ra@sparmed.dk](mailto:ra@sparmed.dk)  
Website: [www.sparmed.dk](http://www.sparmed.dk)