

EXTREME 4X4

Suspension - Protection - Recovery



EXTREME DISCO II FRONT BUMPERS

This winch bumper offers great protection. Spoiler and front skirt will require removal. Superb approach angle and body protection. The bumper has provision for 2 swivel recovery eyes to help prevent winch cables twisting. 2 built-in Hi-Lift Jacking points. Choice of driving or fog lights (included). Zinc primed & powder coated.

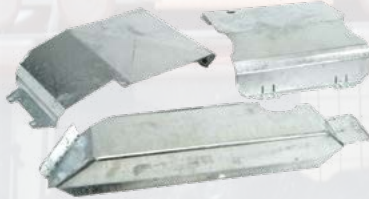
Easy to fit with all fastenings supplied. Part of the lower grill bar requires removal if installing a winch. Zinc Powder coated black for durability. Modular Extreme Steering guard also available - giving superb approach angles and a very clean unobtrusive front profile.

EXTREME DEFENDER WINCH BUMPER



Choose from the Competition version, the Extended version (for use with full size intercoolers) and the Air Con version for 90/110/130.

EXTREME TANK GUARDS



Wide range of Tank Guards available in alloy or galvanised steel. For All Defender 90/110 side and rear mounted tanks. Discovery 1 & 2.

EXTREME TRACK ROD PROTECTION BARS



Provide maximum protection. Galvanised for long life. Covers both track rod bar & steering damper on RRC & Disco 1. Front anti-roll bar must be removed.



EXTREME DISCO II REAR BUMPERS

The Land Rover Discovery II Extreme Rear Bumpers come with 2 Hi-lift jacking points and a central swivel recovery eye. It still retains the use of fuel tank guard/Receiver hitch if fitted.

Available with or without light apertures for OE Land Rover light clusters.

Comes with full fitting instructions and all necessary hardware. Please call us for rear bumper lights.

EXTREME STEERING GUARDS

Large range available incl:

Galvanised Steel Defender Guard with 2 recovery eyes and a built in shunt plate for easy parking of trailers, caravans, boat launching or using a Quickly Detachable Winch Tray Kit.

8mm Extreme Alloy Steering Guard with bolt on anodised steel mounting brackets suitable for light duty off roading.

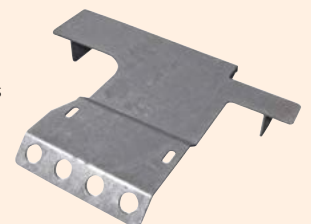


EXTREME TRANSMISSION GUARDS

Transfer and gearbox protection made from 5mm galvanised steel plate complete with all fittings.

Gives excellent protection in all ramp over conditions and still allowing extreme propshaft articulation.

Available for:
Land Rover Defender 90, 110 & Discovery 1, 2, Range Rover Classic V8.



1000'S OF PRODUCTS ON WWW.EXTREME4X4.CO.UK



E&OE.

sales@extreme4x4.co.uk

Tel: +44 (0)1206 868 411

Open Mon - Fri 9-5pm