

Frame Setting

1

BAI EMBROIDERY MACHINE 2023-06-13 17:23

Close PARAMETER Save

Set Trim Broken Speed Frame

Type	X Center	Y Center	X Size	Y Size	R	Operate
CAP1	112	-25	280	75	0	🗑️
CAP2	0	0	0	0	0	🗑️
T1	112	-133	60	60	30	🗑️
T2	112	-133	100	100	50	🗑️
T3	112	-133	120	120	60	🗑️
T4	112	-133	160	160	80	🗑️
T5	112	-133	260	138	80	🗑️
TMAX	112	-138	340	340	80	🗑️
F	115	20	500	400	0	🗑️
C1	0	0	0	0	0	🗑️
C2	0	0	0	0	0	🗑️
C3	0	0	0	0	0	🗑️
C4	0	0	0	0	0	🗑️
C5	0	0	0	0	0	🗑️

PX coordinate value ——— Frame size in X direction ——— Frame angle rounded
PY coordinate value ——— Frame size in Y direction

Description

After confirming the size of the embroidery frame and the coordinates of the center position, set the embroidery frame.

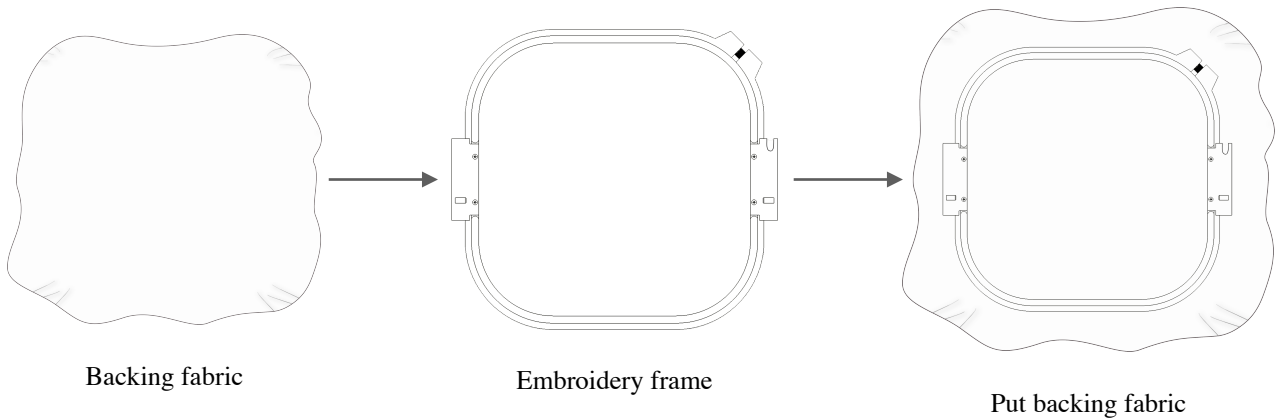
- For no rounding corners, R is set to 0.
- The coordinates of Xcenter and Ycenter of embroidery frames of the same type are the same, but the sizes of Xsize and Ysize are different.
- The size of the input Xsize and Ysize should be 30mm smaller than the actual embroidery frame as a safety distance.

 It is not recommended to adjust Xcenter and Ycenter coordinates easily.

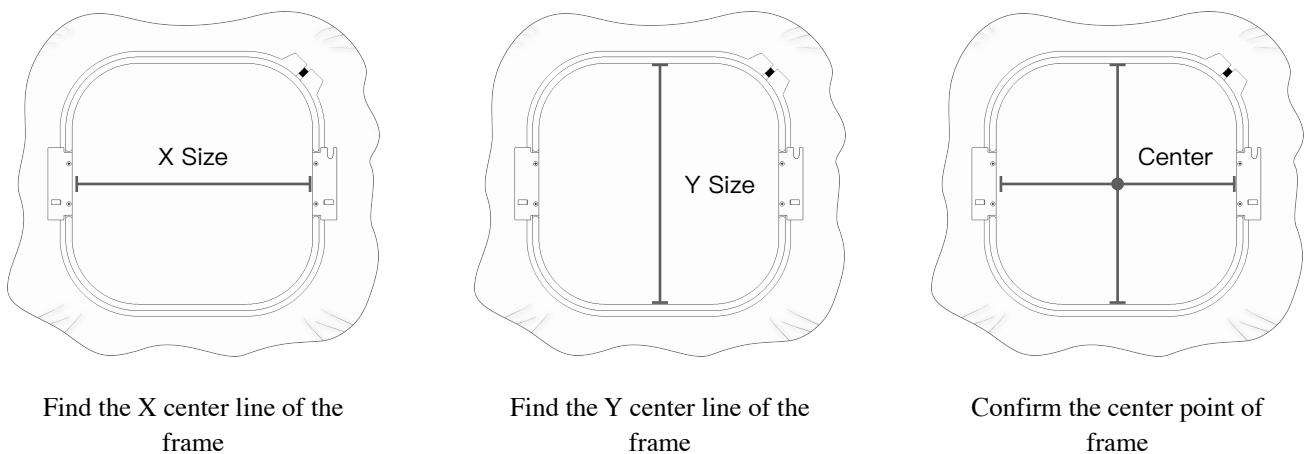
Add Frame Manually

2

1 Put backing fabric.



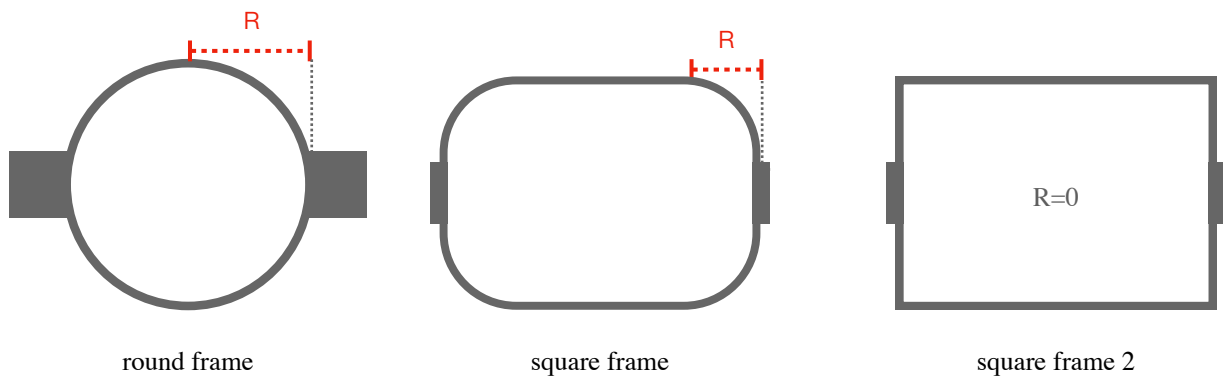
2 Measure the center point of the frame and record the dimensions in the X and Y directions (in mm).



3 Calculate the frame circle (R) and record it.

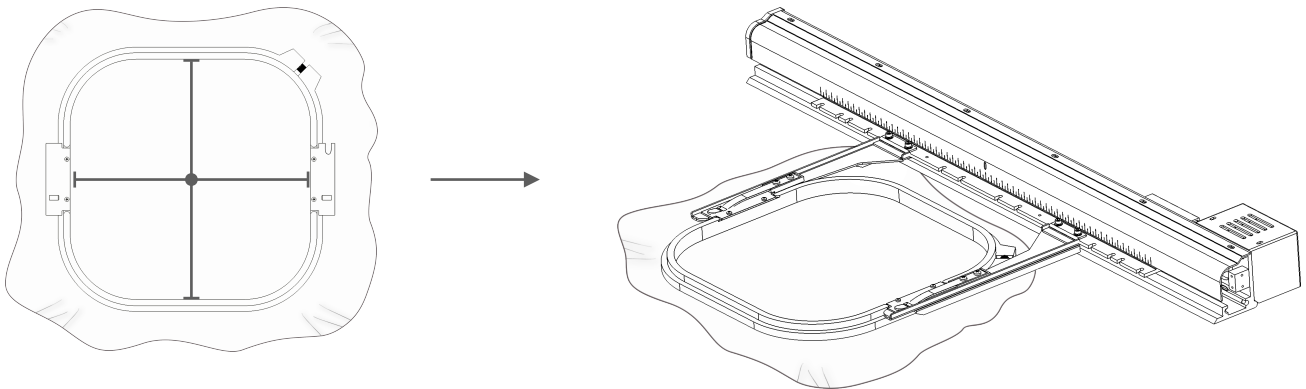
- No rounding corners, R set to 0.

The length (mm) of the red line segment is the embroidery rounding corners.



Add Frame Manually

4 Install the embroidery frame to the machine.

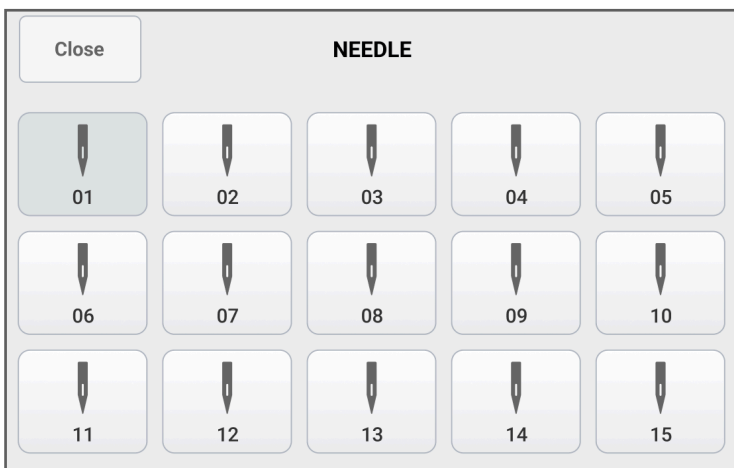


Determine the center point of the frame

5 Find the origin point automatically.

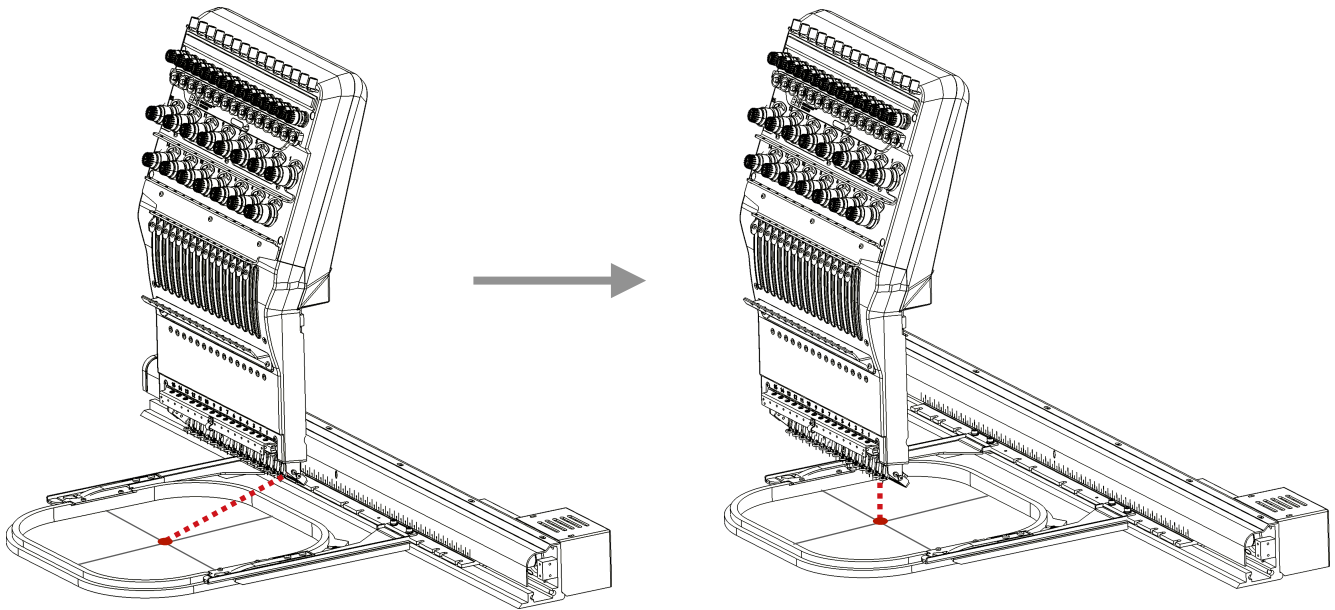


6 Click  Switch to needle 1.

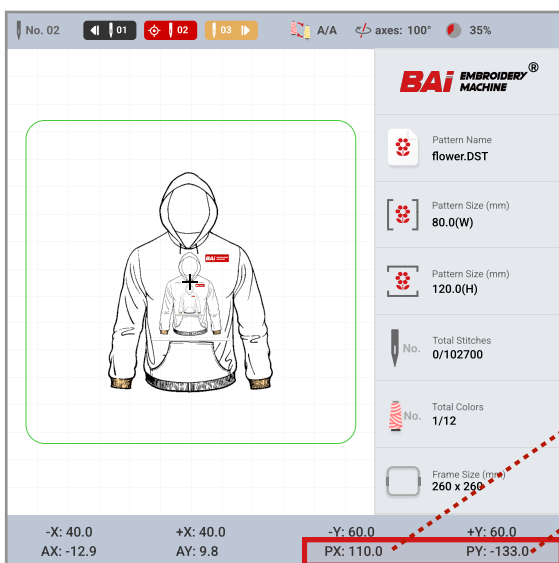


Add Frame Manually

7 Use the direction keys to move the embroidery frame so that needle No. 1 coincides with the center point of the embroidery frame



8 Record the values of PX and PY and fill them in the embroidery frame settings.



Fill in the values of PX and PY in C1-C5 of the embroidery frame setting.

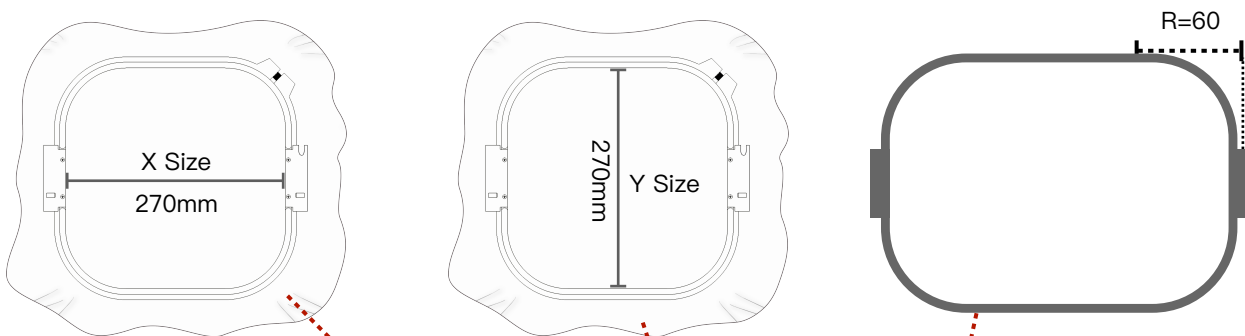
i C1-C5 are custom embroidery frames, add up to 5 types.

Type	X Center	Y Center	X Size	Y Size	R	Operate
C1	110	113	0	0	0	
C2	0	0	0	0	0	
C3	0	0	0	0	0	
C4	0	0	0	0	0	
C5	0	0	0	0	0	

Add Frame Manually

9 Fill in the recorded X Size, Y Size and circle R values in the embroidery frame settings.

- No rounding corners, R set to 0.
- The size of input X size and Y size should be 30mm smaller than the actual embroidery frame as a safety distance.



Type	X Center	Y Center	X Size	Y Size	R	Operate
C1	110	-113	240	240	60	
C2	0	0	0	0	0	
C3	0	0	0	0	0	
C4	0	0	0	0	0	
C5	0	0	0	0	0	

10 Click save after the adjustment is complete

