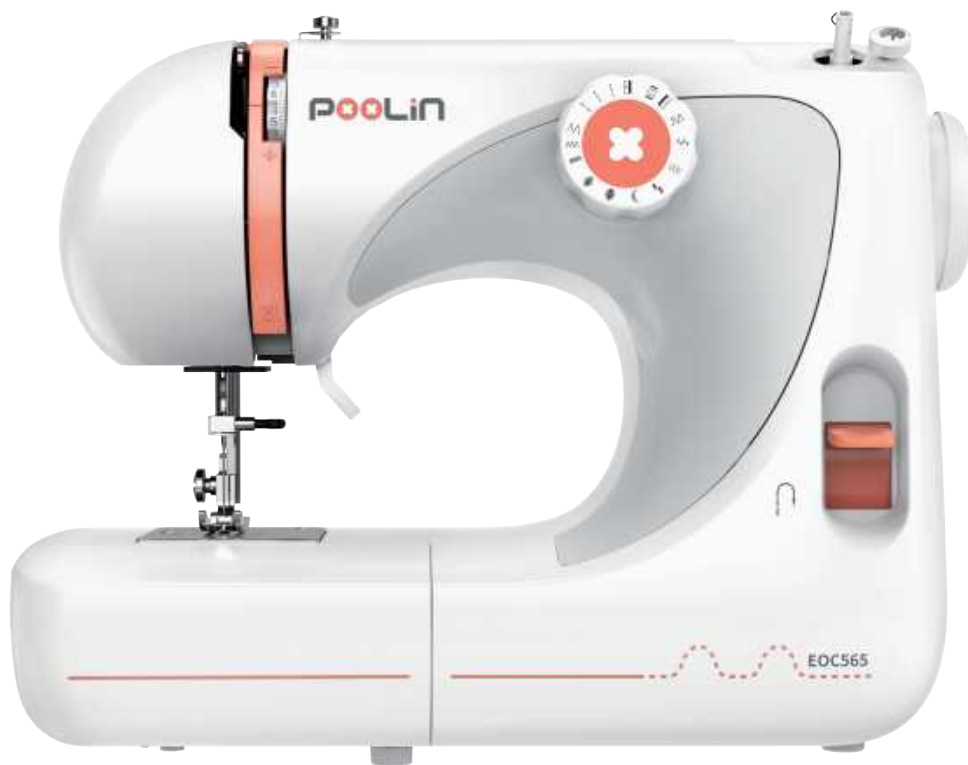


POOLiN

Instruction Manual

EOC565 Sewing Machine



Please read this manual carefully
before using to ensure the device is used safely and effectively

IMPORTANT SAFETY INSTRUCTIONS

When using an electrical appliance, basic safety precautions should always be followed, including the following.

Read all instructions before using this sewing machine.



DANGER

To reduce the risk of electric shock:

1. Do not allow to be used as a toy. Close attention is necessary when this sewing machine is used by or near children.
2. This appliance can be used by children aged from 8 years and above and persons with reduced physical, sensory or mental capabilities or lack of experience and knowledge if they have been given supervision or instruction concerning use of the appliance in a safe way and understand the hazards involved. Children shall not play with the appliance. Cleaning and user maintenance shall not be made by children without supervision.
3. Use this sewing machine only for its intended use as described in this manual. Use only attachments recommended by the manufacturer as contained in this manual.
4. Never operate this sewing machine if it has a damaged cord or plug, if it is not working properly, if it has been dropped or damaged, or dropped into water. Return the sewing machine to the nearest authorized dealer or service center for examination, repair, electrical or mechanical adjustment.
5. Never operate the sewing machine with any air openings blocked. Keep ventilation openings of the sewing machine and foot control free from the accumulation of lint, dust, and loose cloth.
6. Never drop or insert any object into any opening.
7. Do not use outdoors.
8. Do not operate where aerosol (spray) products are being used or where oxygen is being administered.
9. To disconnect, turn switch to the off ("O") position, then remove plug from outlet.
10. Do not unplug by pulling on cord. To unplug, grasp the plug, not the cord.
11. Keep fingers away from all moving parts. Special care is required around the sewing machine needle.
12. Never sew with a damaged needle plate as this can cause needle to break.
13. Do not use bent needles.
14. Do not pull or push fabric while stitching. It may deflect the needle causing it to break.
15. Switch the sewing machine off ("O") when making any adjustments in the needle area, such as threading needle, changing needle, threading bobbin, or changing presser foot, etc.
16. Always unplug sewing machine from the electrical outlet when removing covers, lubricating, or when making any other user servicing adjustments mentioned in the instruction manual.
17. Attention the following to avoid injury:
 - switch off or unplug the appliance when leaving it unattended;
 - unplug the appliance before carrying out maintenance.
18. Always unplug before relamping. Replace bulb with same type rated 15 watts.



CAUTION

Moving parts-To reduce risk of injury, switch off before servicing. Close cover before operating machine.

SAVE THESE INSTRUCTIONS

This product is for household use, or equivalent.

This appliance complies with EMC Directive 2014/30/EU covering the electromagnetic compatibility.



Please note that on disposal, this product must be safely recycled in accordance with relevant National legislation relating to electrical/ electronic products. If in doubt please contact your retailer for guidance.

Part I Sewing Machine Identification

Identification.....	1
Accessories.....	1

Part II Preparation for Sewing

Connecting power supply.....	2
Reserve sewing.....	2
Presser foot lifter.....	2
Changing presser foot.....	3
Auxiliary box.....	3
Stitch selector and indication.....	3
Replacement of needle.....	4
Needle, Thread and Fabric Chart.....	4
Winding bobbin.....	5
Inserting bobbin into bobbin case.....	7
Treading the top thread.....	8
Picking up bobbin thread.....	9
Adjusting top thread tension.....	10

Part III Basic Stitch

Straight stitch.....	11
Basic Z-stitch.....	12
Overlocking stitch.....	12
Three-point Z-stitch.....	12
Blind stitch.....	13

Part IV Decorative Stitch

Decorative stitch.....	13
------------------------	----

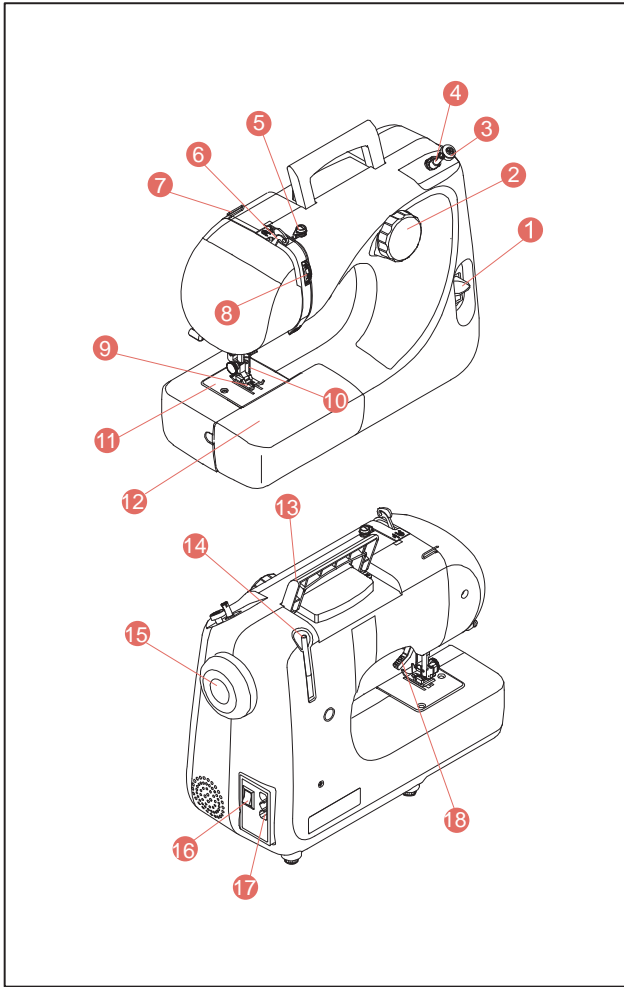
Part V Buttonhole stitching

Buttonhole stitching.....	14
Corded buttonhole.....	14

Part VI Caring for your machine

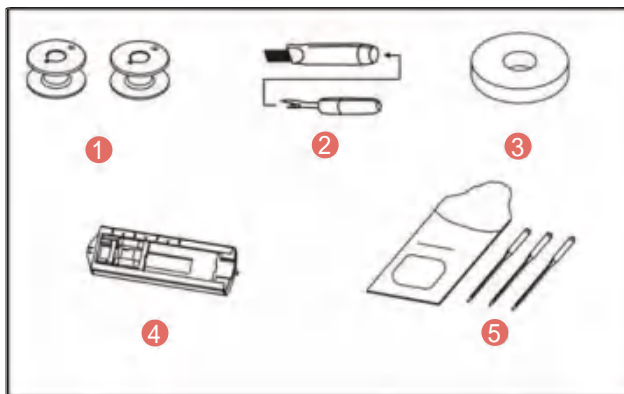
Cleaning feed dog.....	15
Cleaning shuttle race.....	15
Changing light bulb.....	16
Troubleshooting.....	16

Part I Sewing Machine Identification



Identification

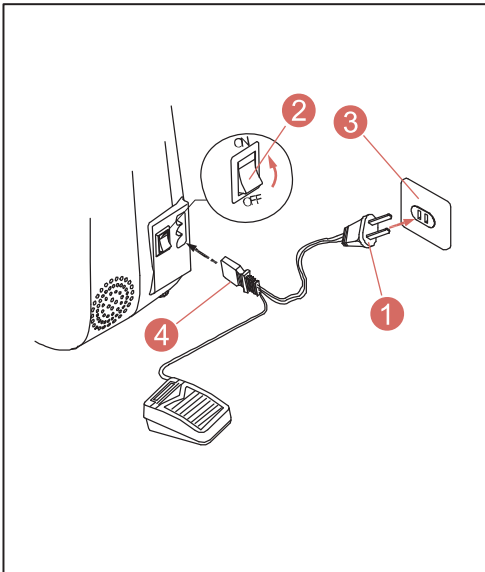
1. Reverse stitch lever
2. Stitch selector
3. Bobbin winding stopper
4. Bobbin winding pin
5. Bobbin winding thread guide
6. Take-up lever
7. Thread guide
8. Thread tension dial
9. Presser foot
10. Needle
11. Needle plate
12. Extension table
13. Handle
14. Spool holder
15. Hand wheel
16. Power/Light switch
17. Socket
18. Presser foot lever



Accessories

- ① Bobbins
- ② Ripper/ Brush
- ③ Felt pad
- ④ Buttonhole presser
- ⑤ Needles

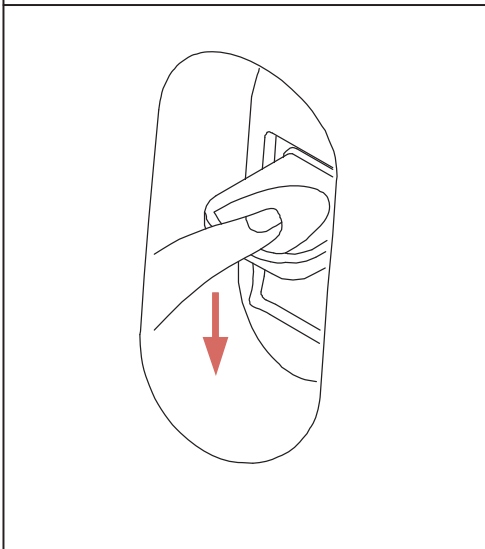
Part II Preparation for Sewing



Connecting power supply

- ① Power plug
- ② Power switch
- ③ Power supply
- ④ Sewing machine plug

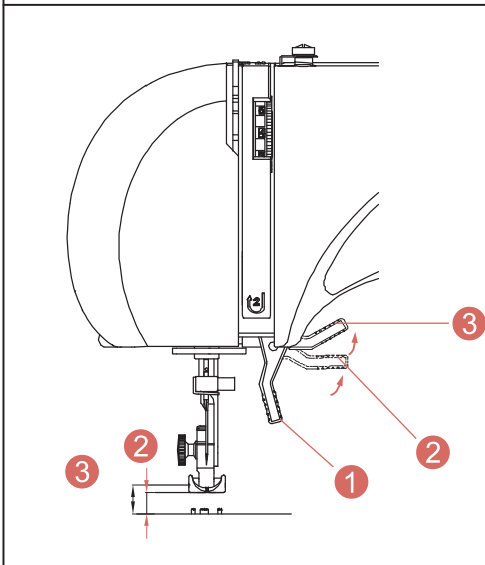
Before connecting power supply, check the voltage indicated in the machine for consistency with the voltage of the to-be-connected power supply.



1. Set power switch at "OFF"
2. Insert plug into sewing machine socket
3. Insert power plug into socket
4. Turn on power switch

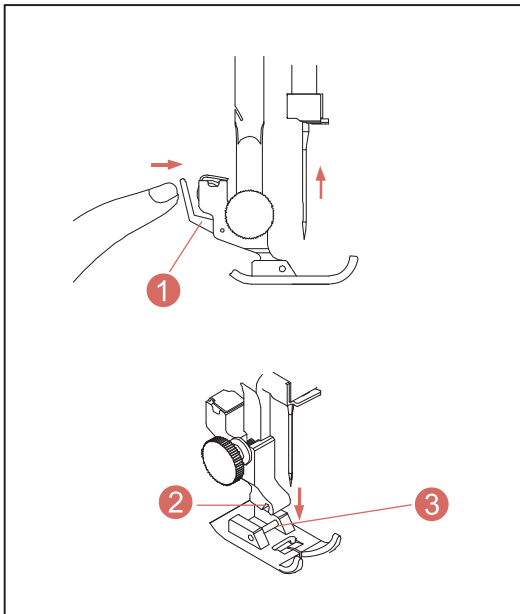
Reverse sewing

Press reverse stitch lever to start reverse sewing



Presser foot lifter

- ① Presser foot lever
- ② Raise the lifter to the middle of position to insert or remove fabric.
- ③ Lift it to its highest to change the presser foot or to remove thick fabric.



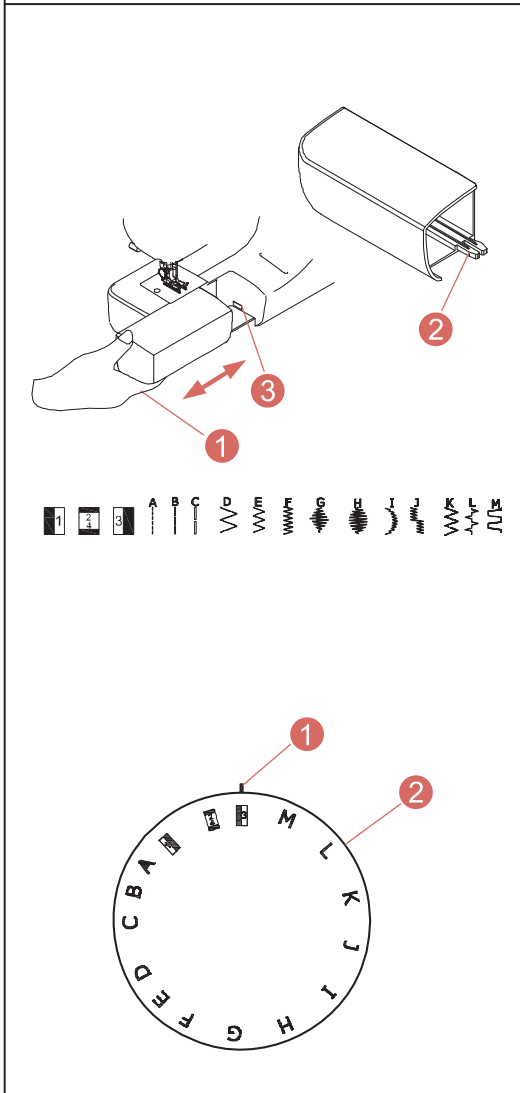
Changing presser foot

- ① Foot release level
- ② Recess
- ③ Foot holder snaps

Be sure needle is in the up position. Raise presser foot lever.

Snap-on presser foot

1. Raise foot release lever to remove the foot.
2. Place the desired foot on the needle plate aligning needle holes.
3. Lower the presser foot lever so that the foot holder snaps on the foot.



Auxiliary box

Knocking out

As shown in diagram, leftwards pull the auxiliary box and withdraw it from machine. The auxiliary box may be disassembled as free arm or as auxiliary desk for sewing.

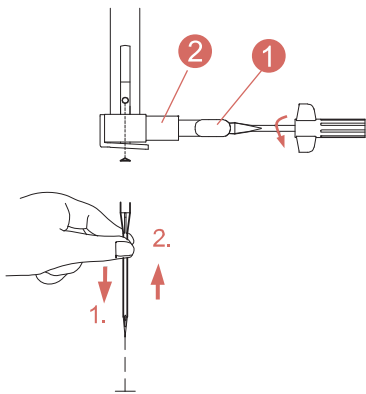
Installation

Push the auxiliary box into the machine and fully insert and fix the protrusion into the fixing hole of auxiliary box.

- ① Auxiliary box
- ② Protrusion
- ③ Fixing hole

Stitch selector and indication

1. To select a stitch, be sure needle is out of fabric at its highest position.
2. Then turn the selector until the required stitch is indicated by the symbol.



Replacement of needle

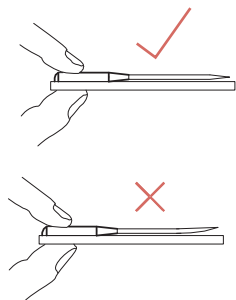
1. Turn off power switch, rotate hand wheel to lift the needle to the highest point and to lower the presser. Counterclockwise rotate needle set screw to take out needle.

2. Insert the new needle into needle fixing hole with its flat face backwards, upwards push the needle as far as possible and finally clockwise tighten set screw.

① Needle set screw

② Needle clamp

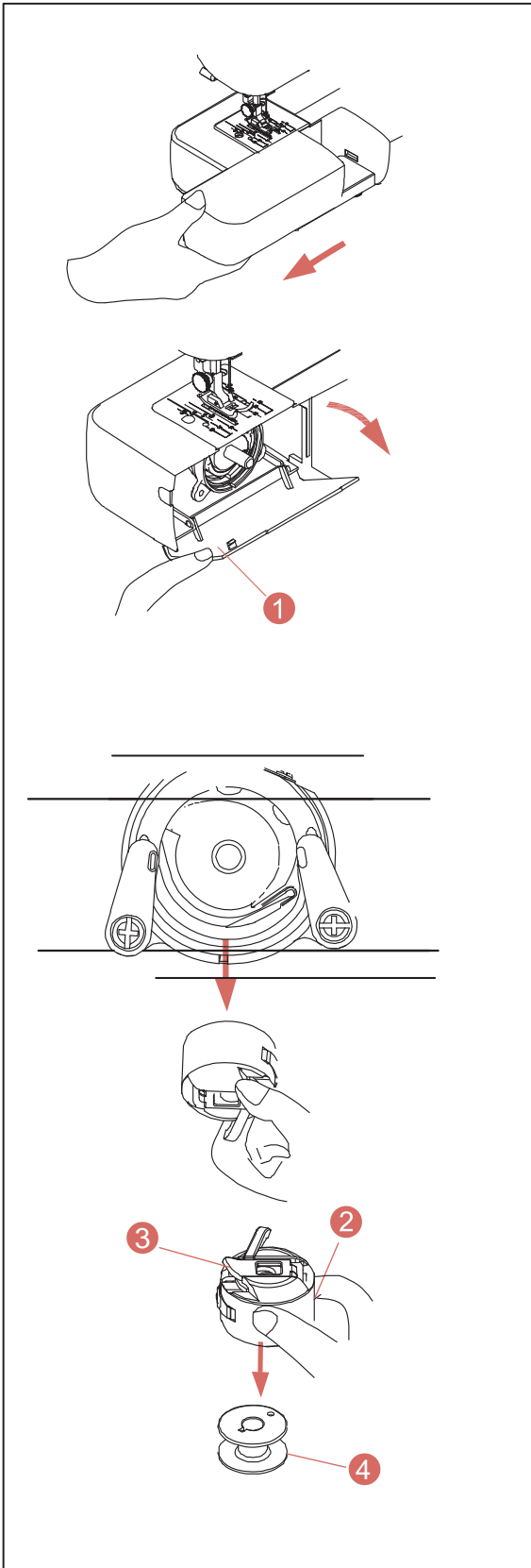
The needle shall be frequently checked, since the blunt or worn out needle would damage fabric.



Needle, Thread and Fabric Chart

Fabric		Thread	No.
thin fabric	silk, voile, lawn, organdie, georgette, warp fabric	80 to 100 fine silk thread	9 (65)
		80 to 100 fine cotton thread	or
		80 to 100 fine polyester thread	11 (75)
		50 fine silk thread	
medium fabric	flax, cotton goods, pique, serge, double knitting fabric , fine cotton goods	60 to 80 cotton thread	11 (65)
		50 to 80 synthetic thread	or
		core thread	14 (90)
		50 cotton thread	14 (90)
thick fabric	jean, drill, gaberdine, coated fabric, wool, canvas	50 silk thread	14 (90)
		40 to 50 cotton thread	or
		40 to 50 synthetic thread	16 (100)
		core thread	
		30 silk thread	16 (100)
		30 cotton thread	

For general sewing, 11# or 14# needle is suitable. Thin needle is for sewing thin fabric and coarse and heavy needle for sewing heavy fabric.



Winding bobbin

1. Removing bobbin case

Remove the accessories box from the machine. Raise the needle to its highest position by turning hand wheel manually towards you.

① Bobbin access cover

Hold cop latch of the bobbin case and take out the bobbin case from shuttle race.

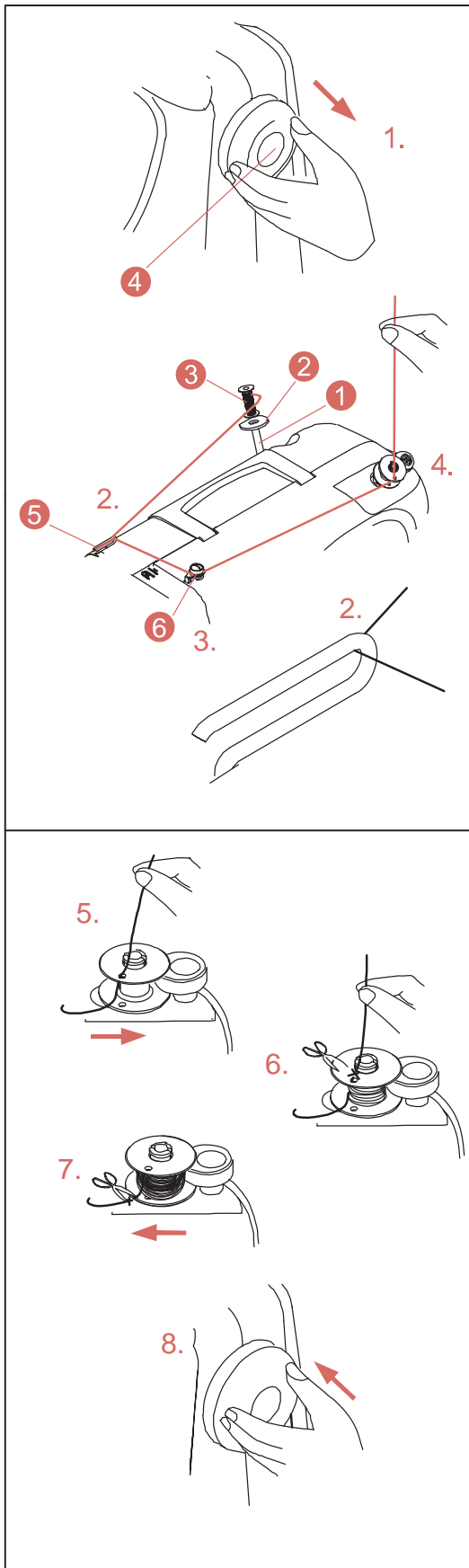
② Bobbin case

③ Cop latch

2. Removing bobbin

After opening the cop latch, the bobbin as shown in diagram will drop out from bobbin case.

④ Bobbin



3. Winding bobbin

1. After outwards pulling the hand wheel to release clutch, during winding bobbin the needle will be impossible to move.

Pull out the spool holder on back of machine, place felt pads and insert the doubling spindle into spool holder with thread direction shown in diagram.

- ① Spool holder
- ② Felt pad
- ③ Clew
- ④ Hand wheel
- ⑤ Thread guide
- ⑥ Bobbin winding thread guide

2. Pass thread from spool through thread guide as shown.

3. Wind the thread around bobbin winding thread guide.

4. Place the bobbin on winding shaft and pass the bottom thread through the small hole of bobbin outwards from inside.

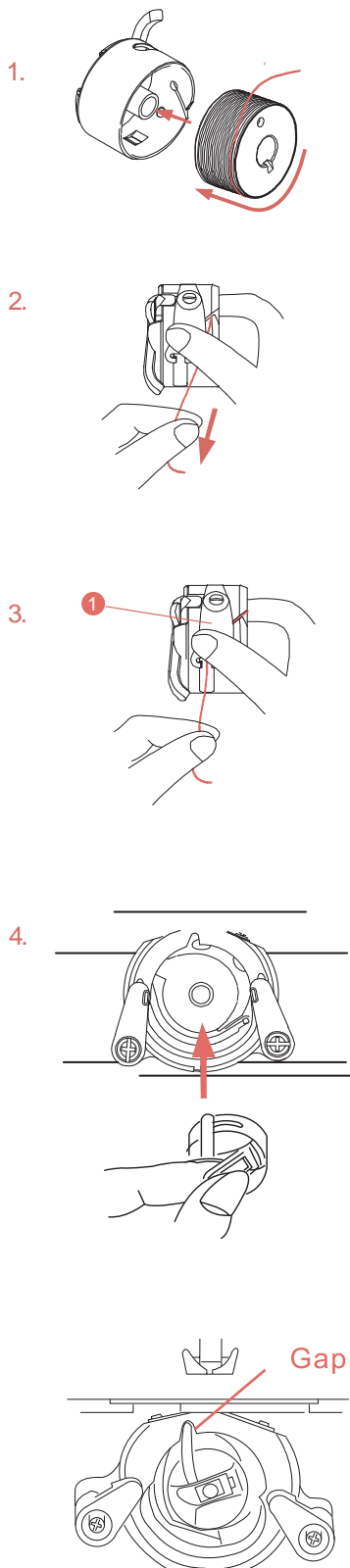
5. Push the winding shaft rightwards.

6. Hold the thread end with hand and start the machine. After winding some bottom thread round the bobbin, stop the machine and cut off the thread end near small hole of bobbin.

7. Restart the machine. After full winding of the bobbin, it will automatically stop. At that time, stop the machine, leftwards push winding shaft to its original position and cut off thread.

8. Leftwards push hand wheel to close clutch.

Inserting bobbin into bobbin case



1. Hold the bobbin in your right hand with the thread running clockwise.

2. Insert the bobbin into the case with about 10 cm of thread showing outside the case.

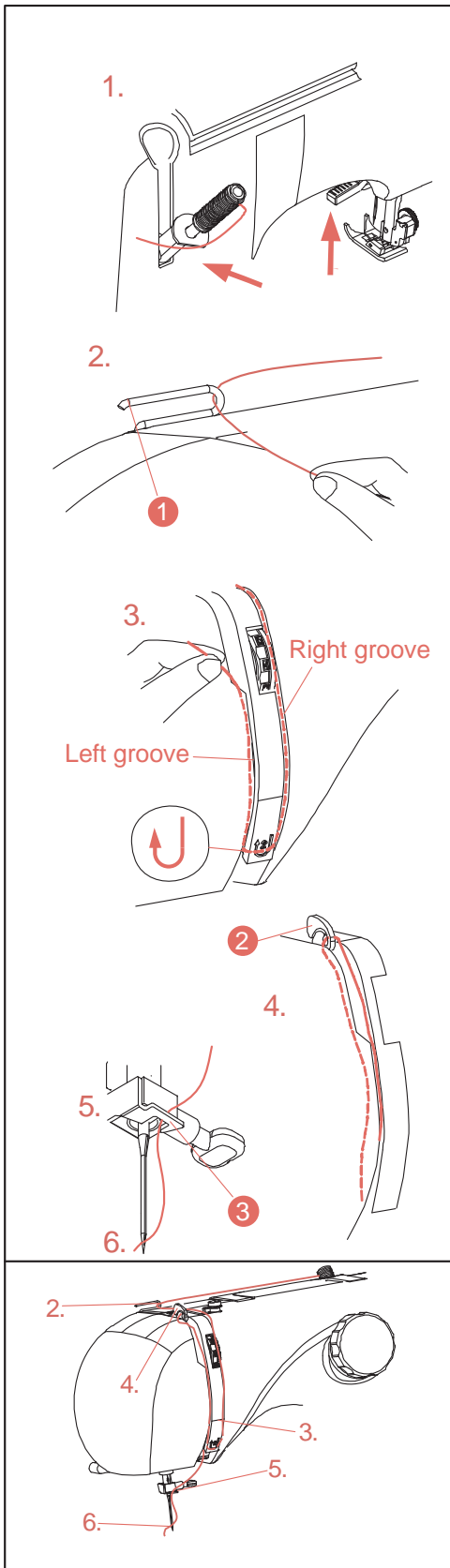
3. Pull the thread through the slit in the case and then underneath the flat tension spring. It will click when it is in place.

① Flat tension spring

4. Hold the latch open, with locating pin straight up. Slide the bobbin case onto the center spindle of the shuttle, keeping the thread toward you.

NOTE: Be sure the locating pin fits into the locating groove at the top of the shuttle.

Release the latch to lock the bobbin case in place.



Threading the top thread

1. Place the top thread in spool holder, with direction shown in diagram. Rotate the hand wheel to lift the take-up to the highest position. Lift the presser.

2. Move the top thread round cross thread carrier.

① Cross thread carrier

3. Downwards move the top thread round the right groove of thread holder base, upwards pull and move it round thread holder base and upwards pull the thread through left groove of thread holder base.

4. From right leftwards pull the top thread through take-up lever, insert it into the hole on take-up lever and pull the thread downwards along the left groove.

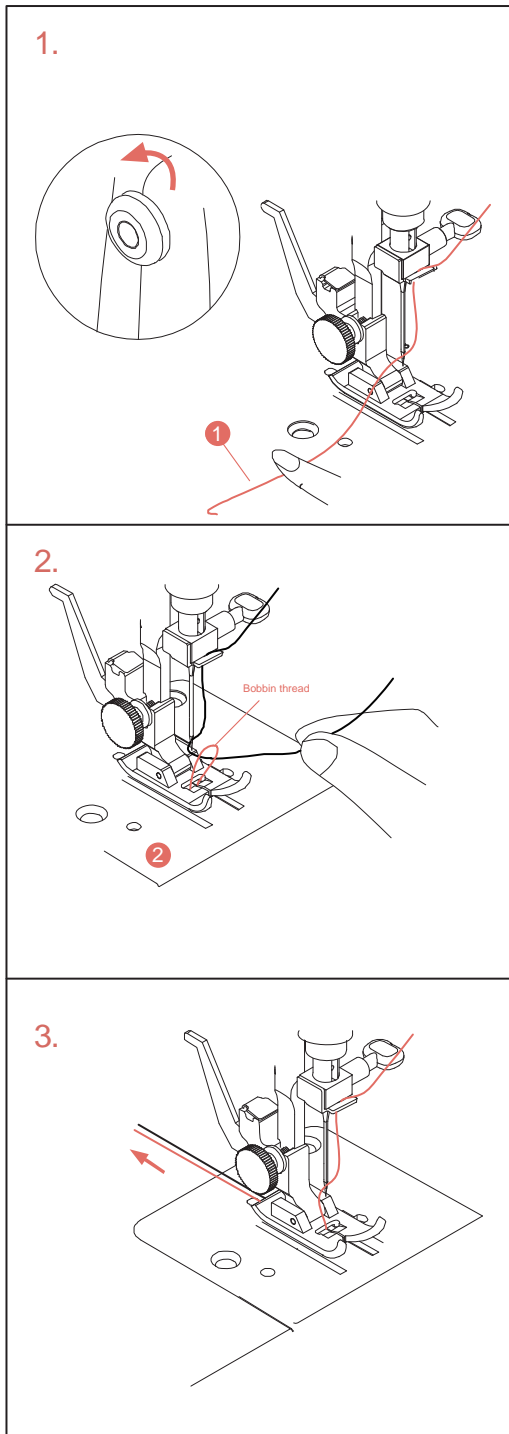
② Take-up lever

5. Leftwards pull the top thread through guide-way on needle bar.

③ Needle bar guide way

6. From back forwards thread the needle eye.

Schematic diagram of machine threaded as left.



Picking up bobbin thread

1. Raise the presser foot lever.

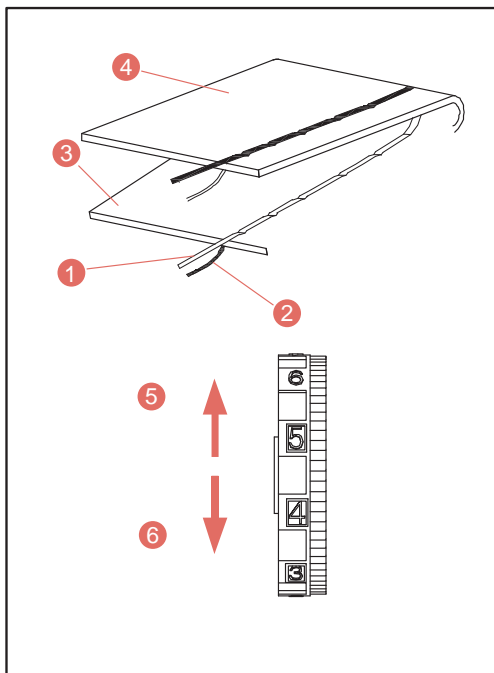
Holding needle thread loosely by your left hand, turn hand wheel towards you by your right hand until the needle comes to its highest position.

① Top thread

2. Lightly pull up the top thread, and pick up bobbin thread, which will appear through the needle plate slot.

② Bobbin thread

3. Pull both top and bobbin threads together towards back of machine under the presser foot, leaving about 15 cm clear.



Adjusting top thread tension

1. Balance of top tension

The tension is well balanced when these two threads 'lock' in the middle of layers of fabric you are sewing.

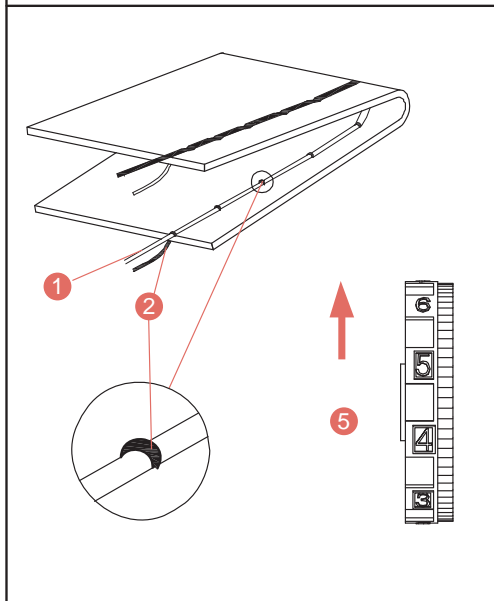
- ① Top thread
- ② Bobbin thread
- ③ Top side of fabric
- ④ Under side of fabric

Rotate the thread tension dial to adjust top tension

- ⑤ Decrease tension
- ⑥ Increase tension

Adjust the top tension, depending on:

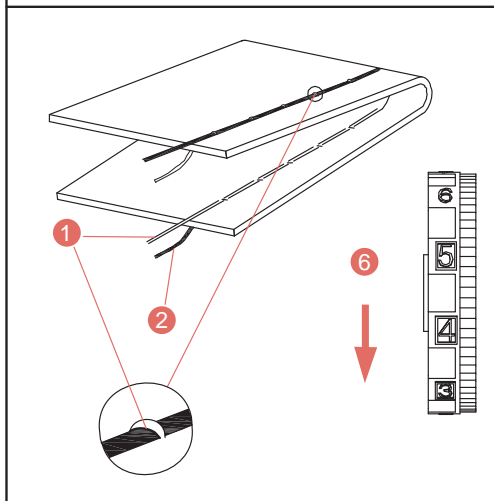
1. Thickness and compactness of fabric
2. Layers of fabric
3. Stitch



2. Excessively tight top thread

- ① Top thread
- ② Bobbin thread
- ⑤ Decrease tension

In case of loose bobbin thread exposed from the front face of fabric, upwards shift the thread holder adjustment knob (to increase digit) to decrease top tension.

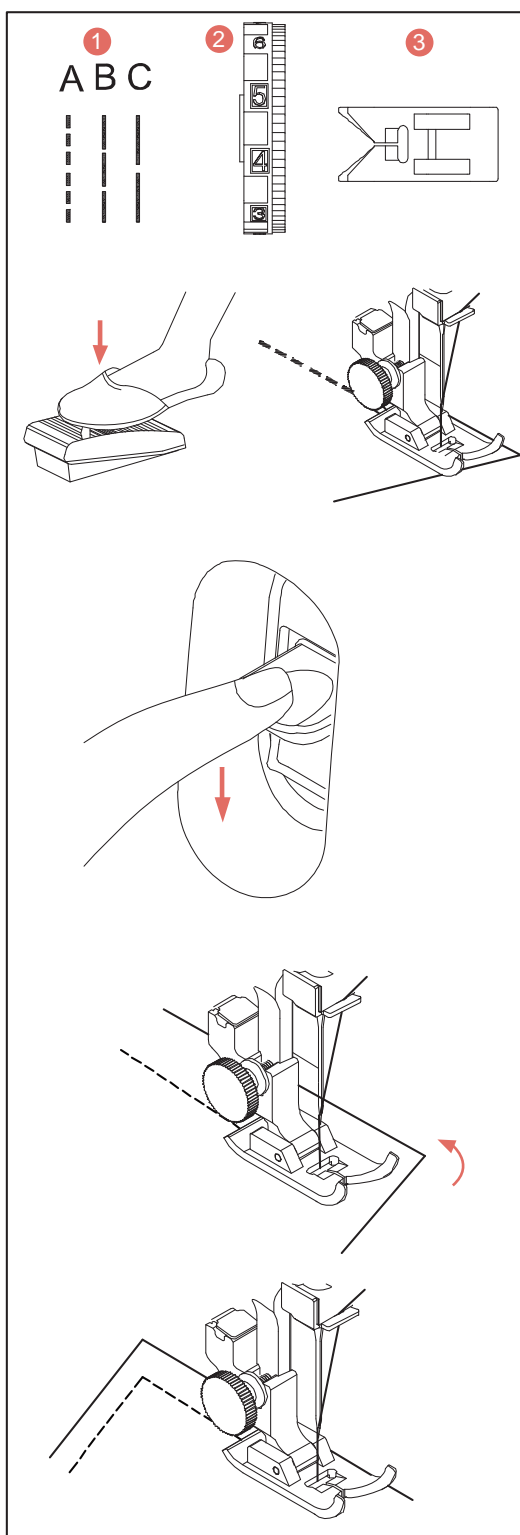


3. Too loose top tension

- ① Top thread
- ② Bobbin thread
- ⑥ Increase tension

In case of loose top thread exposed from the back side of fabric, downwards shift the thread holder adjustment knob (to decrease digit) to increase top tension.

Part III Basic Stitch



Straight stitch

- | | |
|-----------------------|-----------|
| ① Selection of stitch | A, B, C |
| ② Thread tension dial | 2~6 |
| ③ Presser | Z-presser |

Starting sewing

Lift the presser, place the fabric beneath presser and align it with the guide on needle plate, place the needle on the sewing start position, pull the top thread and bottom thread to back, lower the presser, press the pedal controller and start sewing along the guide.

Note:

For general sewing, leave 1.6 cm sewing allowance.

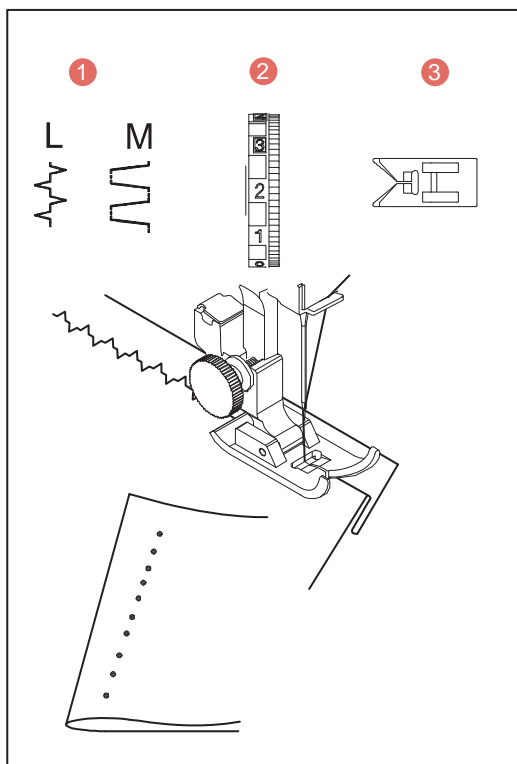
Reinforcing sewing

Press the reverse sewing button to backwards stitch several needles and then resume forwards sewing.

Rectangular-corner

On fabric margin, leave 1.6 cm rectangular-corner.

1. When sewing at the corner, stop sewing.
2. Rotate hand wheel towards the operator to lower needle.
3. Lift the presser and rotate the fabric to 1.6 cm guide.
4. Lower the presser and start sewing as the new direction.



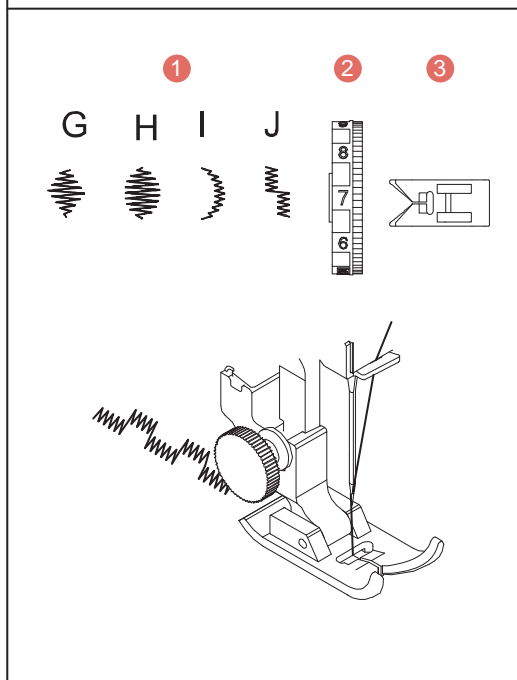
Blind stitch

- | | |
|-----------------------|-----------|
| ① Selection of stitch | L or M |
| ② Thread tension dial | 1~4 |
| ③ Presser | Z-presser |

For easy-loosing thick fabric, overlock the raw edge, as shown in the diagram, fold the fabric and leave 0.7 cm allowance at margin.

Place the fabric on the machine and make the needle just pass through left of folded portion of the fabric.

After sewing, press the fabric to make blind stitch visible on its face side.



Part IV Decorative stitch

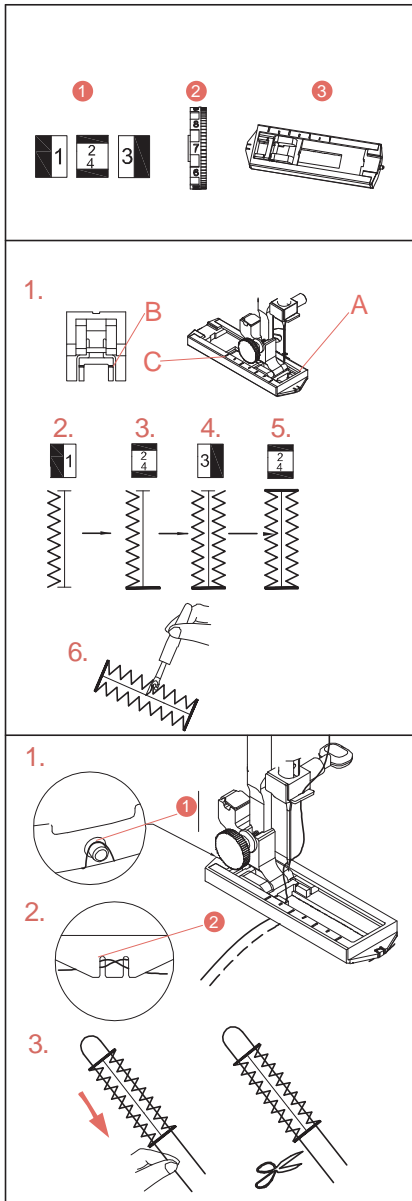
Decorative stitch

- | | |
|------------------------|------------|
| ① Selection of pattern | G, H, I, J |
| ② Thread tension dial | 6~8 |
| ③ Presser | Z-presser |

Use thin fabric and fold it in twill direction.

Align the folded edge with seam of presser and drop the needle outside the fabric margin.

Part V Buttonhole stitching



Buttonhole stitching

- | | |
|-----------------------|------------------------------|
| ① Selection of stitch | |
| ② Thread tension dial | 1~5 |
| ③ Presser | Buttonhole stitching presser |

Starting sewing

1. Fix buttonhole stitching presser, mark the buttonhole length on the fabric, place the fabric beneath presser with the buttonhole mark to the operator, move slide A on the presser to the operator, align mark C at the slide top with the beginning mark B and lower the presser.

2. Select stitch , make sewing forward till reaching front end of buttonhole mark and stop the needle at left.

3. Select stitch , make sewing for 4 to 6 needles and stop the needle at right.

4. Select stitch , make sewing to start of buttonhole stitch and stop the needle at right.

5. Select stitch , make sewing for 4 to 6 needles and stop the needle at left.

6. Move out the fabric, place a pin on bottom of buttonhole to avoid cutting of barring stitch, and cut off the buttonhole with the ripping knife.

Note:

Stitch the buttonhole at fabric margin as follows:

Corded buttonhole

1. Lift the buttonhole stitching presser, place the cord on rear fork of presser, pull the cord forwards beneath the presser to front fork of presser, and bind the cord at intersection of front fork.

① Rear fork

② Front fork

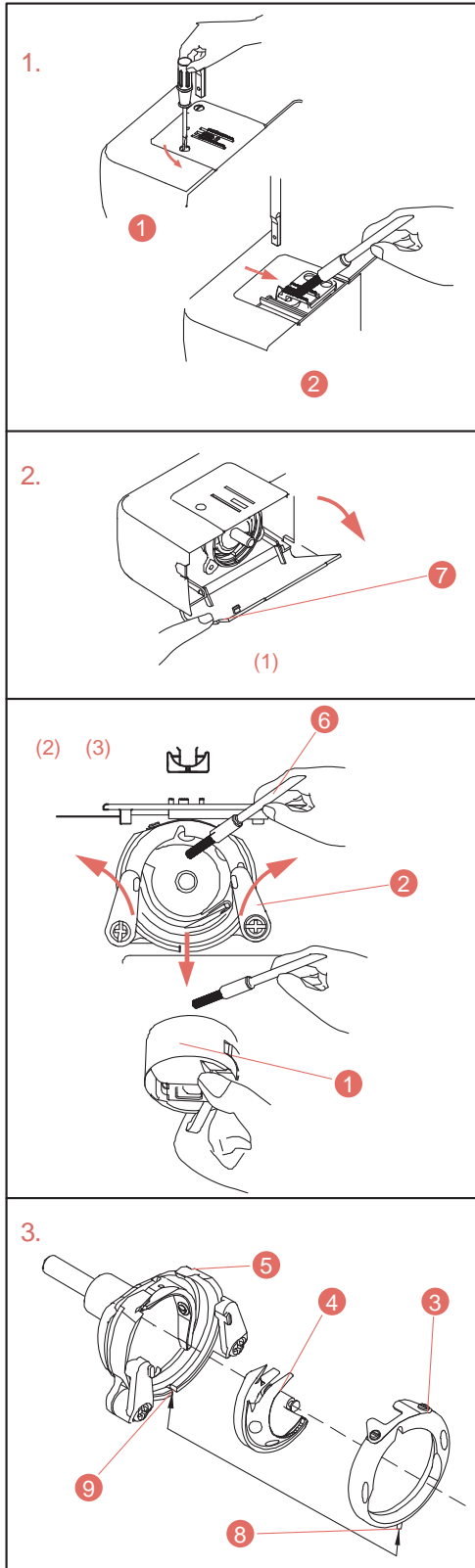
2. Interlocking the buttonhole as above. After stitching the buttonhole, move out the fabric and cut off the sewing thread.

3. Tighten the left cord, move the cord to back of fabric with hand needle and then cut off the cord.

Part VI Caring for your machine

Note:

Before the following operation, please withdraw the power plug from socket.



Cleaning feed dog

- ① Take out needle and presser, remove screws from needle plate with screw driver and take out the needle plate.
- ② Brush out dust and cotton flock from feed dog and replace needle plate.

Cleaning shuttle race

- (1) Open bobbin access cover
- (2) Adjust the needle to the highest position, open presser foot of shuttle race cover and take out bobbin components.
- (3) Open bobbin case latch, take out bobbin case, open stopper of shuttle race back to take out shuttle race back and clear off dust and cotton flock from shuttle race and bobbin case with brush or dry soft cloth.

- ① Bobbin case
- ② Shuttle keeper
- ③ Shuttle race cover
- ④ Oscillating shuttle
- ⑤ Shuttle race
- ⑥ Brush
- ⑦ Bobbin access cover

Fixing shuttle race

Hold intermediate shaft of oscillating shuttle and replace it to shuttle race to make the semi-circle of oscillating shuttle and semi-circle of shuttle race to form an integral circle, replace the shuttle race cover, align the pin on the bottom of the shuttle race back with the slot on the shuttle race, reset the stopper of shuttle race cover to the previous position and place bobbin case.

- ⑧ Pin
- ⑨ Slot

Troubleshooting

Trouble	Causes	Solution
Top thread broken	<ol style="list-style-type: none"> 1. Improper top threading. 2. Excessively tight top tension. 3. Blunt or bend needle. 4. Improper fixing of needle. 5. At start of sewing, top thread and bottom thread are not correctly fixed beneath the presser. 6. At end of sewing, the yarn is not threaded to back. 7. Excessively thick or too thin thread relatively to the needle. 	<p>Check or thread the top thread again; Check or change the needle.</p>
Breaking of bobbin thread	<ol style="list-style-type: none"> 1. The yarn of bobbin is not correctly threaded into bobbin case holder. 2. Cotton flock collected on bobbin case holder. 3. The bobbin is damaged and impossible to smoothly rotate. 	<p>Clean the shuttle/bobbin case. Adjust tension of top thread.</p>
Needle- broken	<ol style="list-style-type: none"> 2. Blunt or bend needle. 3. Loosing of needle set screw. 4. Excessively tight top tension. 5. At end of sewing, the yarn is not threaded to back. 6. Too thin needle. 	<p>Check and change proper needle</p>
Skipping stitch	<ol style="list-style-type: none"> 1. Improper fixing of needle. 2. Blunt or bend needle. 3. The needle and (or) thread is unsuitable for the used fabric. 4. Improper top threading. 5. Incorrect selected needle. 	<p>Check and change proper needle. Check and threading the top thread again.</p>

Trouble	Causes	Solution
Crease stitch	<ol style="list-style-type: none"> 1. Excessively tight top tension. 2. Improper top threading. 3. Excessively thick top thread for the used fabric. 	Adjust tension of top thread.
Unsmooth feed	<ol style="list-style-type: none"> 1. Feed dog is wound by thread. 	Clean the presser foot.
Not rotation of machine	<ol style="list-style-type: none"> 1. Not surely inserting power plug. 2. Clamping thread at shuttle race. 3. Failure to replace the bobbin at original position after winding bobbin. 	<p>Check the power connector.</p> <p>Check and clean the shuttle.</p> <p>Check and pull/push the bobbin winding pin to primary position.</p>
Excessive noise of machine	<ol style="list-style-type: none"> 1. Not surely inserting power plug. 2. Clamping thread at shuttle race. 3. Failure to replace the bobbin at original position after winding bobbin. 	<p>Check and clean the shuttle.</p> <p>Check and pull/push the bobbin winding pin to primary position.</p>



Meaning of crossed –out wheeled dustbin:

Do not dispose of electrical appliances as unsorted municipal waste, use separate collection facilities.


Contact you local government for information regarding the collection systems available.

If electrical appliances are disposed of in landfills or dumps, hazardous substances can leak into the groundwater and get into the food chain, damaging your health and well-being.



MAKE SEWING EASIER REACH EMBROIDERY CLOSER

 Richword(Wuxi)Supply Chain Management Co.,Ltd

 (+86)0510 83380568

 poolinservice@richword.com

 Room 1601, Jianghai West Road, Liangxi District,
Wuxi City, Jiangsu Province, China