



Quick Guide

EOC05



It is recommended that beginners to test refer to the Quick Guide first, and any questions please feel free to contact us.

Security

Please safely use electricity, follow operating procedures to avoid puncturing needles.

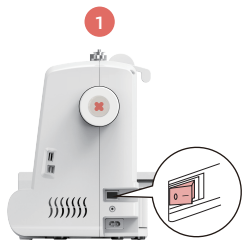
Environment

Place the machine in a dry environment and keep it away from children.

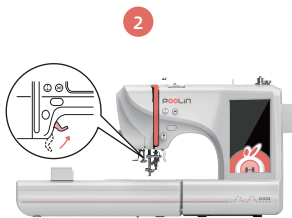
Voltage

The machine supports wide voltage input, the voltage range is 110V to 220V.

Before threading and installing the embroidery frame, please ensure the machine is in the following state:



Turn off the power



Raise the presser foot for proper threading



Reset the handwheel to ensure the needle is in the highest point



Bobbin



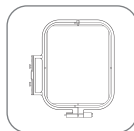
Bobbin cover



Shuttle race cover



Hoop 100*235



Hoop 100*100



Screwdriver



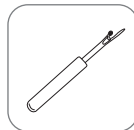
Tweezers



Stylus



Scissors



Seam ripper



Needles



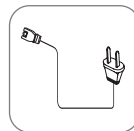
USB



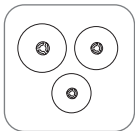
User manual



An envelope



Power cable



Pin cap

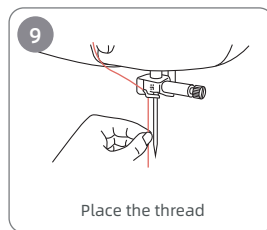
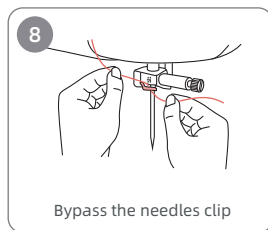
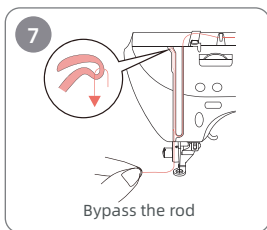
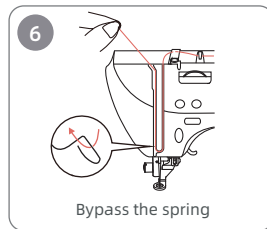
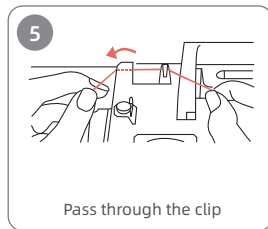
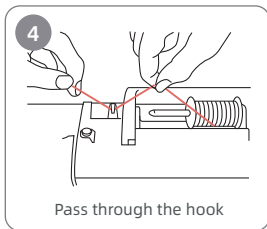
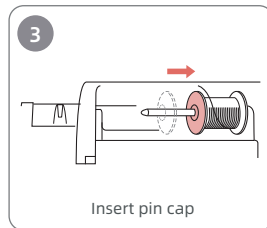
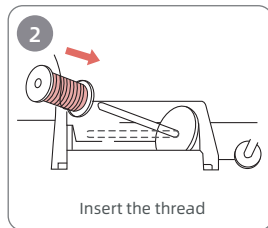
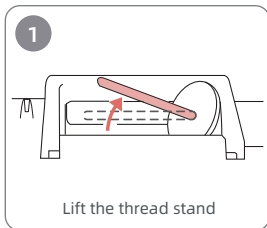


Wrench



Tips: Please refer to the teaching video named "Unboxing" in USB.

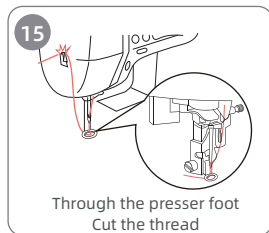
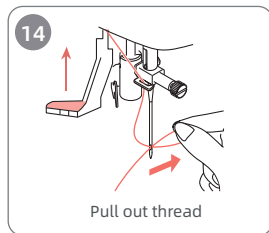
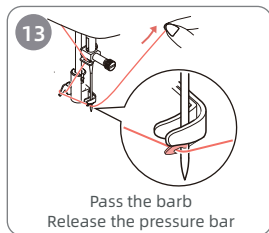
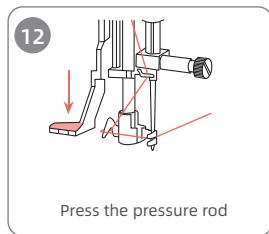
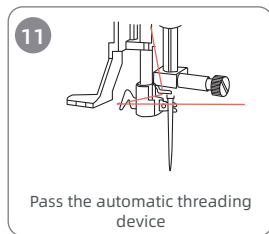
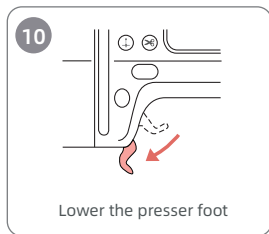
Threading the machine



Tips:

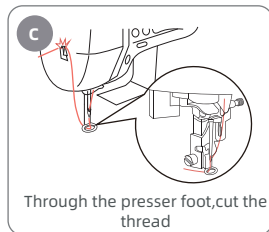
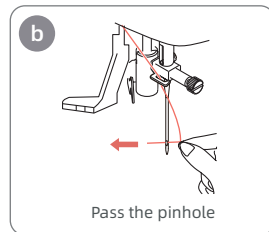
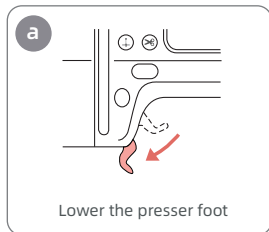
Step 6: Pull the thread upwards, pass through the elastic hook, and pull it.
Step 7: The thread pass through the upper hook.

Threading the machine

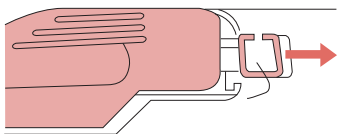


! **Tips:** Please make sure to lift the presser foot before threading.

If you use manual threading, follow step **a** **b** **c**

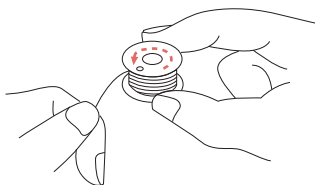


1



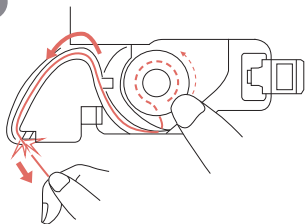
Pull the buckle to the right

2



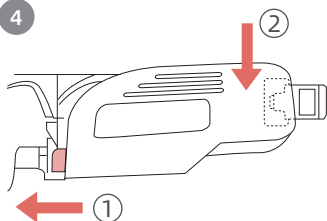
Place the bobbin counterclockwise

3




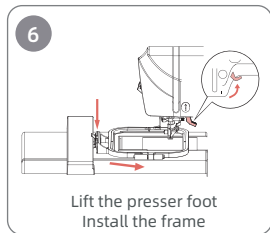
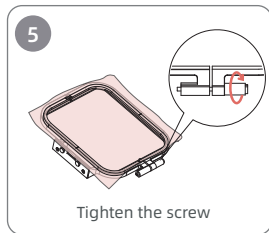
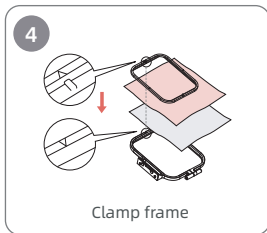
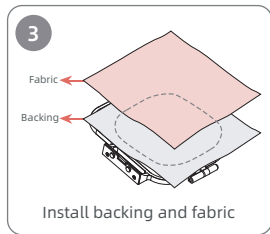
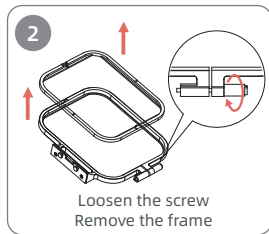
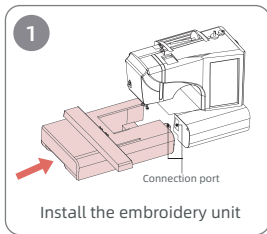
Follow the arrow to wrap the bobbin thread
Cut off the excess thread

4



Clamp the cover on the left side
Press the cover

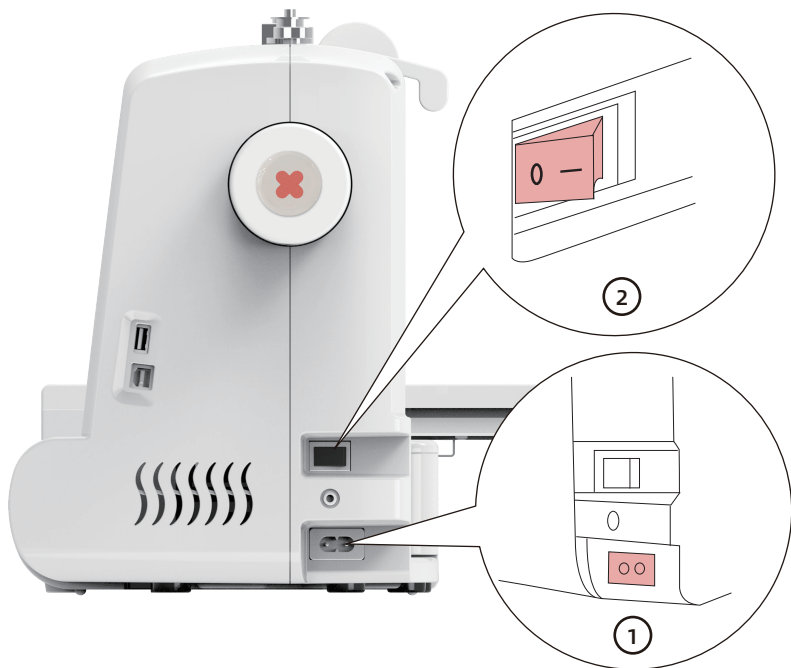
 **Tips:** We have prepared a prewound bobbin, which is installed inside the machine.



💡 Tips:

1. For better installation, loosen the screws first.
2. Please place a layer of backing under the fabric.
3. Place fabric and backing inside the frame, then straighten the fabric and tighten the screws.

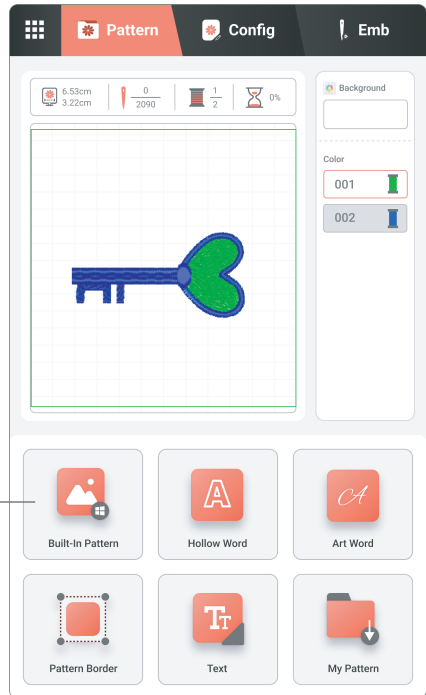
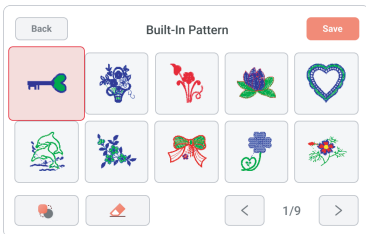
- 1 Plug in
- 2 Press the switch button



Choose the pattern

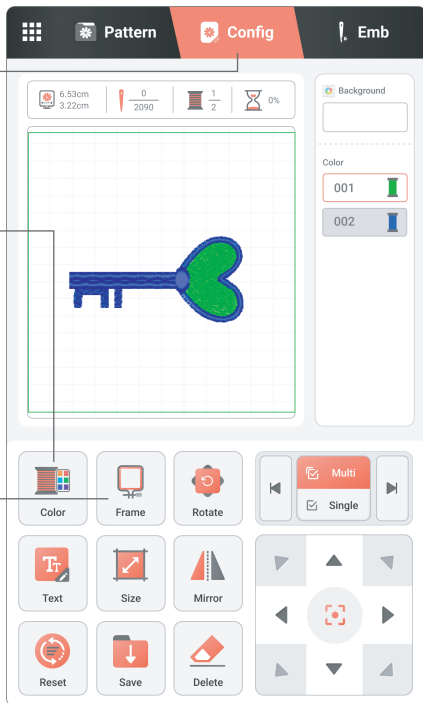
1 Click built-in pattern

2 Choose a pattern

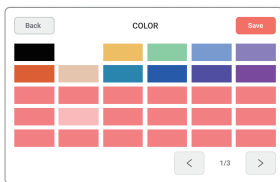


Config the pattern

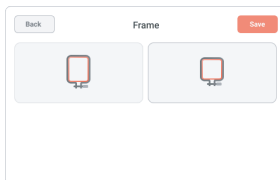
3 Click Config



4 Choose the color



5 Choose the corresponding frame

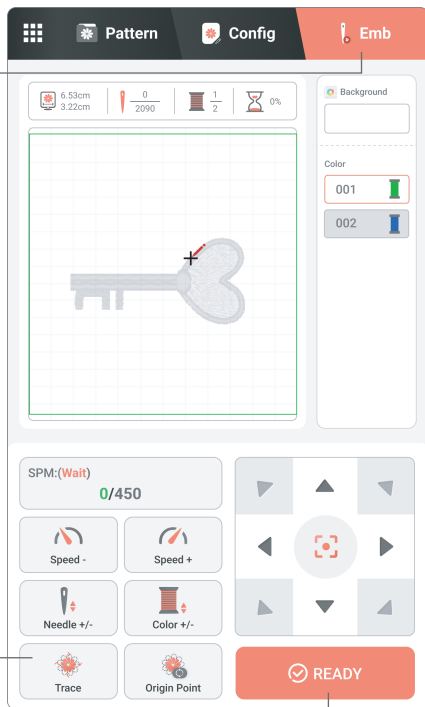


6 Click Emb

7 Click trace, confirm embroidery range

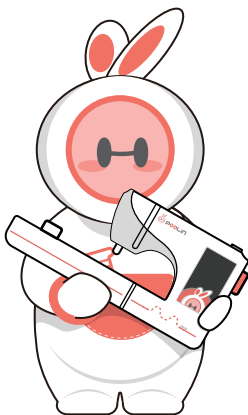
8 Click ready

9 Put down the presser foot, click the start button  on machine



Contact us

After completing the above tests, you can start your own diy embroidery journey. If you encounter any problems, you can check the user manual or feel free to contact us at any time.



 Poolinservice@richword.com

 +8618900635078

 POOLIN Users Group

 POOLIN Sewing Machine

