

ZEE LINE

by **MILTON™**

www.zeeline.com



21-Gallon Air Operated Waste Oil Drain

Model Number: ZE21DC

Use and Operations Manual

Index

1 - Product Introduction

2 - Safety & Warnings

3 - Assembly & Usage Instructions

4 - Maintenance & Care

5 - Troubleshooting

6 - Mechanical Drawing

7 - Parts List

8 - After Sales Service

9 - Contact Info

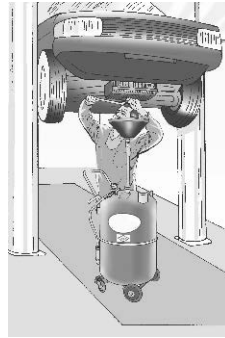
¿Necesita instrucciones en
español? Escanea aquí.



Besoin d'instructions en
français? Scannez ici.



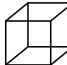
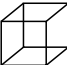
ZE21DC



This waste oil drain is for collecting waste oil that is discharged from the transmission and/or motor. The fill rate of the drain can be monitored from the level indicator on the tank. Maximum oil storage capacity is 21 gallons. This waste oil drain is intended to drain the waste oil from underneath a properly lifted vehicle by using the telescoping funnel. Discharging the oil drain is accomplished by using compressed air from a compressed air system. The safety valve on the tank provides protection against extreme air pressure build-up.

Warning: Do not use this product with corrosive or flammable liquids.

Features

| MODEL | Evacuation Type | Discharge Pressure | Tank Capacity | Hose Length |  |  |
|--------|-----------------|--------------------|---------------------------|------------------------|---|---|
| ZE21DC | Air Operated | 7.3 PSI (0.5 bar) | 21 Gallons (80 liters) | 5 foot (1.5 meters) | inches: 19x19.5x44.5 centimeters: 48x49x113 | 55 Lbs. (25 KG) |



SAFETY & WARNINGS

| | |
|---|--|
|  | Please wear proper safety attire before operating this product |
|  | Do not weld on or near tank |
| <p>Capacity</p>  | CAUTION! Do not exceed the tank capacity |
|  | WARNING! Close the downtube valve before evacuating oil |
|  | Never exceed 7.3 PSI (0.5 bar) of pressure when discharging oil from tank |
|  | Only use original spare parts that are authorized by Zeeline by Milton™. The use of spare parts not designed in accordance with this product can cause undesired operation or put the operator at risk of serious injury or death. |
|  | Always dispose of waste oil in compliance of local and federal guidelines. Be sure to determine local disposal and hazardous material safety guidelines before using this product. |
|  | For use with Oil only. Do not use for/with: Diesel, Gasoline (petrol), Kerosene, food grade oils, or other solvents |



Failure to comply with these guidelines can result in undesired operation of product, loss of warranty, and put the operator at risk of serious injury or death. Zeeline by Milton™ assumes no responsibility for failure to comply with written safety instructions.



Assembly & Usage Instructions

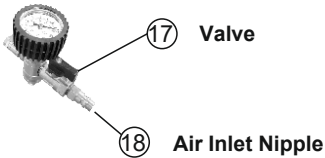
Customer Obligations

- The customer must ensure that anyone operating this equipment has thoroughly reviewed this manual and that all staff is properly trained before operating.
- The customer must have an air compressor which is in accordance with the technical data.
- The customer must follow all local and federal environmental guidelines when discharging oil from the oil drain.
- The customer must comply with the recommended maintenance schedule. Products where these guidelines are not followed will be considered out of warranty.



Assembly & Usage Instructions

- For Discharging waste oil from the tank ;
- Close all of the valves, which are located on the product.
- Ensure that the air inlet nipple is inserted (18) and tighten. Open valve (17) and connect your air coupler to the air inlet nipple (18).



- Close the valve (17) when the pressure reaches 7.3 PSI (0.5 bar)

WARNING!

- Never change the settings of the safety valve which is located over the tank. The safety valve is designed to discharge excess air pressure from the tank. If you change these settings or remove the safety valve; it can cause injuries or even death.

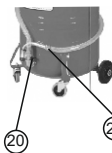


Safety Valve



Safety Valve

- Mount the discharge hose (23) to the oil drain.
- Open the oil discharge valve (20) and discharge the waste oil.



Oil Discharge Hose

Oil Discharge Valve

Assembly & Usage Instructions

- For Funnel Usage
- Unscrew the downtube position knob (7) and set the down tube to the desired working height. Then Screw the downtube position knob to tighten and lock in the desired height.



7 Downtube position knob



3 Funnel Ball Valve

- Open the funnel ball valve (3) before draining oil into the funnel assembly. Remember to close this valve when evacuating oil from the tank, if not oil will shower out of the funnel.

WARNING !

- Before opening the funnel ball valve, please ensure that the tank has no air pressure inside by checking the pressure gauge. If there is pressure, discharge before opening for your safety.

Maintenance

| PERIODIC MAINTENANCE | DAILY | WEEKLY | MONTHLY | YEARLY |
|--|-------|--------|---------|--------|
| Clean the oil drain daily. | X | | | |
| Check the hose connections, if there is a loose connection and then tighten. | | X | | |
| Look at the level indicator on the side of the tank and empty it if the tank is full. | X | | | |
| Check if the pressure gauge is working. If it is defective, replace it with a new one. | X | | | |
| Check the hoses, if they are cracked or damaged then replace the old hoses with a new one. | | | | X |
| Check the wheels, if they are damaged or not freely moving then replace your old wheels with new ones. | | | | X |
| Contact our customer service department for any other replacement part needs. | | | | X |



This maintenance schedule is designed with your safety in mind and also to maintain optimal performance of the product. Failure to follow this schedule can result in potential injury or even death. Failure to follow the maintenance guide will void the manufacturer's warranty.



Troubleshooting

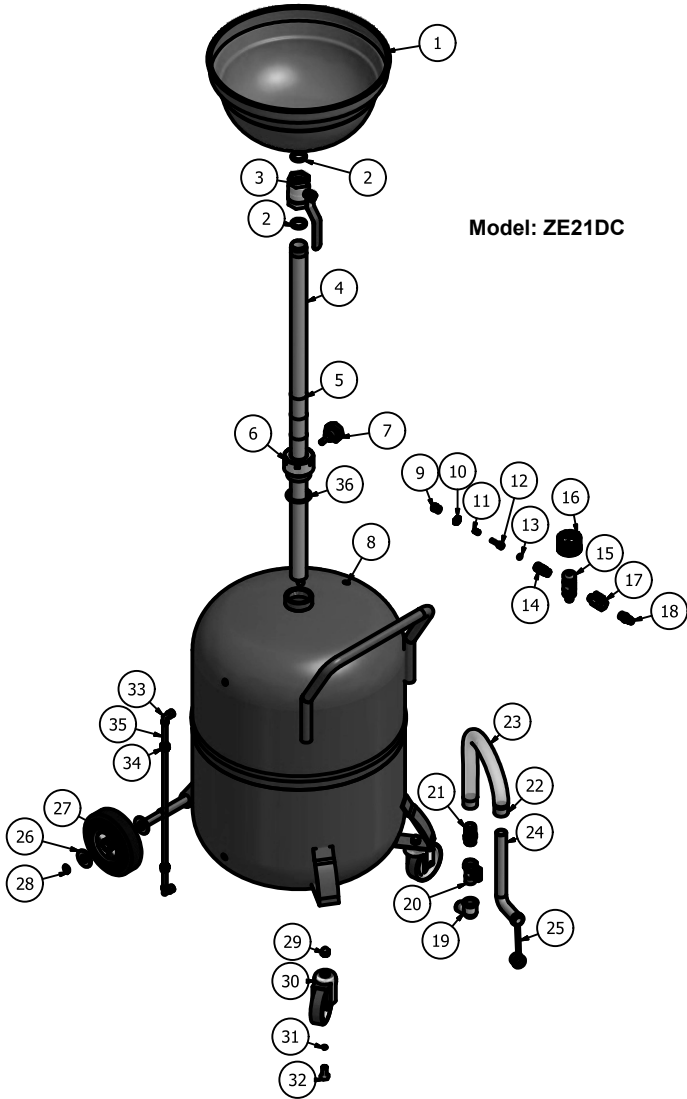
| | |
|--|--|
| When air is supplied to the oil drainer, the pressure gauge does not increase. | Mini valve on the air pumping system may be in closed position, turn it to open position. |
| Funnel tube does not move up and down. | Check whether the down tube know is in the tightened position. |
| There is air pressure in the tank, but the waste oil does not drain. | The tank drain valve may have remained in the closed position, turn it to the open position. |

If the problem is not solved;

- Do not attempt any further action.
- Contact our customer support team for immediate assistance
- Never change the factory settings and any parts of the pump without authorization from our technical support staff.



Technical Drawing



When ordering spare parts please refer to the chart located on page 11 of this manual for part number identification.



Replacement Part List

MODEL ZE21DC

| MODEL ZE21DC | | | | | | | |
|--------------|---------------|------|----------------------|----------|-------------|------|------------------------------|
| ASMB. NO | PART NUMBER | QTY. | DESCRIPTION | ASMB. NO | PART NUMBER | QTY. | DESCRIPTION |
| 1 | ZE21DC-FUN | 1 | FUNNEL | 19 | ZE21DC-EL1 | 1 | ELBOW |
| 2 | ZE21DC-S1 | 2 | PLASTIC GASKET | 20 | ZE21DC-BV12 | 1 | 1-2 MINI BALL VALVE |
| 3 | ZE21DC-BV1 | 1 | 1" BALL VALVE | 21 | | 1 | HOSE ADAPTER |
| 4 | ZE21DC-PIPE | 1 | FUNNEL DOWN TUBE | 22 | | 2 | HOSE SHELL |
| 5 | ZE21DC-OR1 | 3 | DOWN TUBE O-RING | 23 | ZE21DC-HK | 1 | 3/4 BRAIDED TRANSPARENT HOSE |
| 6 | ZE21DC-BA | 1 | DOWN TUBE WEDGE | 24 | | 1 | OIL DISCHARGE PIPE |
| 7 | ZE21DC-DTB | 1 | DOWN TUBE KNOB | 25 | | 1 | OIL DISCHARGE PIPE STOPPER |
| 8 | ZE21DC-TANK80 | 1 | Tank | 26 | | 4 | WHEEL WASHER |
| 9 | | 1 | SAFETY VALVE NIPPLE | 27 | ZE21DC-WK | 2 | 150 X 40 WHEEL |
| 10 | | 1 | SAFETY VALVE NUT | 28 | | 2 | SEGMENT |
| 11 | | 1 | SAFETY VALVE SPRING | 29 | | 2 | 3-8 CLOSED NUT |
| 12 | | 1 | SAFETY VALVE SPINDLE | 30 | ZE21DC-CK | 2 | 75 X 25 WHEEL |
| 13 | ZE21DC-VK | 1 | SAFETY VALVE GASKET | 31 | | 2 | 3/8 RONDEL |
| 14 | | 1 | SAFETY VALVE BODY | 32 | | 2 | 3/8 X 20 BOLT |
| 15 | | 1 | AIR SYSTEM BODY | 33 | | 2 | YELLOW ELBOW |
| 16 | | 1 | GAUGE ASSEMBLY | 34 | ZE21DC-LK | 2 | ELBOW NUT |
| 17 | ZE21DC-BV14 | 1 | 1-4 MINI BALL VALVE | 35 | | 1 | INDICATOR HOSE |
| 18 | ZE21DC-AN1 | 1 | NOTCHED NOZZLE | 36 | ZE21DC-OR2 | 1 | FUNNEL PIPE WEDGE O-RING |







After Sales Services

ZEE LINE
by **MILTON™**

4500 W. Cortland St., Chicago, IL 60639
Telephone: 1-800-231-1525
www.zeeline.com / saleszeeline@miltonindustries.com

Model No :

| | | | | | | |
|----------|----------|--------------|---|-------|--|---|
| A | ← | Working Type | : | | | |
| | | | : | | |  |
| B | ← | Capacity | : | | |  |
| | | | : | | | |
| C | ← | Hose Length | : | | |  |
| | | | : | | |  |
| D | ← | Weight | : | | | |
| | | | : | | | SERIAL NO : → E |

Above is the manufacturer's product identification information

According to this information:

A: Indicates evacuation working type.

B: Indicates tank capacity of tank and funnel.

C: Indicates hose length.

D: Indicates machine weight without oil.

E: Indicates serial number.

- **A proof of purchase is required for all warranty claims.**
- **If you are in need of technical support and do not have your invoice please refer to the serial number on the unit.**
- **The maximum intended lifespan of this product is 8 years. Moisture, chemicals, and atmospheric conditions will alter the integrity of the tank over time.**



by **MILTON™**

Support Service Assistance

Phone Toll Free: 1-800-231-1525

Email:

saleszeeline@miltonindustries.com

Zeeline by Milton™

4500 W Cortland Street
Chicago, IL 60639

WWW.ZEELINE.COM

REV 11/10/2022