



UNISEX ZIP-THRU SWEATSHIRTS  
**CONNECTOR**



STSU820

**The essential unisex zip-thru hoodie sweatshirt**

Terry Sweatshirt  
85% Organic ring-spun combed cotton, 15% Recycled polyester  
300 GSM

- Set-in sleeve
- Lined hood in single jersey
- Round drawcords in matching body colour with metal tipping
- Herringbone tape at inside back neck and at inside of zipper
- Metal zipper and eyelets
- Covered zipper at center front
- Self fabric half moon at back neck
- 1x1 rib at sleeve hem and bottom hem
- Flatlock topstitch on all seams
- Kangaroo pocket with flatlock topstitch

**WHITES**



**COLORS**



**ESSENTIAL HEATHERS**



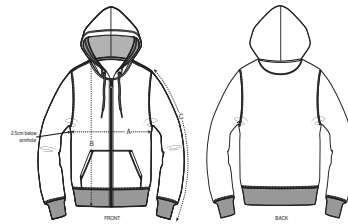
*\*Size available on limited number of colours*

*Please check our webshop for latest information*

**MEDIUM FIT**

XXS*	XS	S	M	L	XL	XXL	XXXL*	XXXXL*
------	----	---	---	---	----	-----	-------	--------

**Size guide**

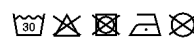


SIZES		XXS	XS	S	M	L	XL	XXL	XXXL	XXXXL
A	Half Chest	46.5	49	51.5	54	57	60	63	66	71
B	Body Length	63	65	68	72	74	76	78	80	82
C	Sleeve Length	60.5	61.5	64	65.5	67	68.5	70	70	70

**Printing Specifications**

For suitable print techniques, please download our printing guide

Wash similar colours together, do not iron on print, wash and iron inside out.



**STANLEY/STELLA**