

 **ACOPOWER**®



Rechargeable Solar Fridge Freezer



Quick Start Guide

Welcome to LiONCooler - a revolution in battery powered portable cooling!

Let's get started with a few important basics. You can find more detailed information in the full User Manual. Check out our online instructional VIDEOS which you can find on our website at www.acopower.com - [Support](#) - [Help Center](#) - [LiONCooler solar freezer videos](#).

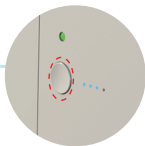
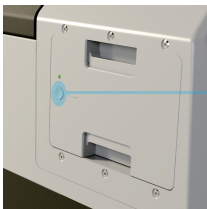
Quick Contents Check:

- **LiONCooler fridge/freezer**
- **LiONCooler lithium-ion Battery** (comes already inserted into the cooler)
- **Power Cords Accessory Kit: AC Wall x1; 12V/24V DC Vehicle x1; Solar x1**
- **Note:** Solar panels to recharge the LiONCooler battery are available as a separate accessory and not included. However, the Solar power cord connector IS included in the power cords accessory kit to help get you started should you choose to expand to an off-grid power solution.

STEP 1. Switching LiONCooler ON/OFF:

The main advantage for new owners of LiONCooler is the ability to power the cooler either plugged into a wall outlet OR "unplugged" in cordless battery mode. Think of it like your smartphone which has a built-in battery so you can 'go mobile'. Here we will guide you through some simple steps of checking power operation by using either the battery or AC wall socket. (Later in Step 4 we cover powering your cooler in a vehicle using 12/24v sockets).

● **Cordless Battery Power Mode and Test:**



● **Turn ON the Battery.**

The battery is neatly slotted into the front face of the LiONCooler. You can perform these functions either with the battery inside the cooler or with the battery removed. Some customers purchase extra spare batteries so this guide step is also useful for testing your spare batteries. The battery has its own independent power button which is located on the front of the battery itself.

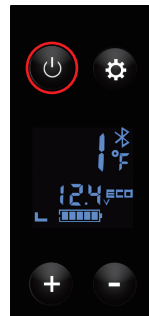
Press and hold the battery power button for about 3 seconds. A yellow light should illuminate and up to 4 blue lights will briefly display to indicate how fully charged the battery is. The blue lights will go off quite quickly, but you can check your battery charge level anytime by simply pressing the power button just once briefly.

Next, let's show you how to operate LiONCooler using just the battery without plugging into a wall outlet.

Once you've confirmed the battery has at least some charge (you checked this above), insert the battery into the cooler and unplug all other cords. You're now in 'cordless mode'. Turn the battery power button ON (yellow light) then turn the LiONCooler power button ON (LED control panel on top of the cooler). You're all set to go! Now that you're in 'cordless mode', LiONCooler will run for as long as the battery lasts (usually 10+ hrs at fridge temperatures; less if freezing).

- see **TIP** below for recharging your battery.

• AC Power Mode and Test:



• Turn ON the LiONCooler.

Plug in the AC power cord to a wall outlet. The power button is located on the control panel on top of the cooler. Press and hold the power button on the cooler for about 3 seconds. The LED display will illuminate.

TIP:

In order to recharge the battery, the battery must be switched on (yellow light) and the cooler plugged into a wall outlet. You only really need to turn the battery ON when you are 'going mobile' i.e. have no access to a wall outlet OR you need to recharge the battery. Batteries can also be recharged when removed from the cooler by using an external power pack (available as a separate accessory separately).

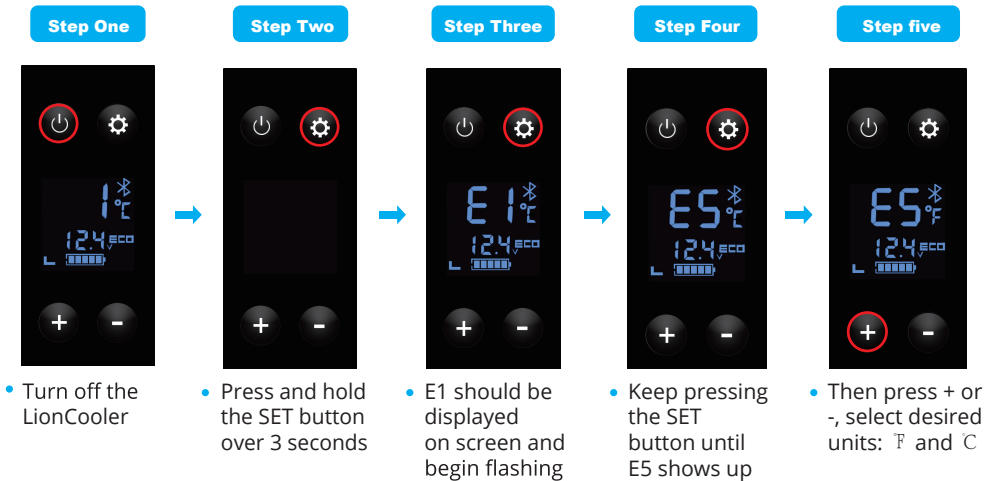
STEP 2. Fridge or Freeze Temperature Settings:

When the LiONCooler is powered ON and running, press + or - button on the control panel to adjust the temperature you want. After that, the control panel will display the current inside temperature of the cooler. Don't worry. The display will gradually change until the cooler reaches your desired temperature. It's a good idea to pre-chill the fridge and food/drinks before setting out on a trip. Just treat it like the fridge in your kitchen.

Temperature setting range: -4 °F ~ 68 °F (-20 °C ~ +20 °C)

STEP 3. Changing Temperature Display - Fahrenheit or Celsius:

With the AC power cord connected to a wall outlet, use the power button and turn the cooler OFF. Also turn the battery power button OFF. (See step1). The LED display will be blank BUT you can operate the SETTINGS in this mode. Press and hold the SETTINGS button (gear wheel) for about 3 seconds. Release the button when you see a flashing E1 displayed on screen; briefly press once and release the SETTINGS button again until E5 is displayed. Next press + or - to toggle between your desired temperature display units: °F and °C.



STEP 4 . Using LiONCooler in a Vehicle - protect your vehicle battery:

LiONCooler is ideal for road trips and can be connected to your 12/24v socket charger often called a 'cigarette lighter socket'. The 12/24v cord (round red connector) is included in the power cord accessory kit. Connecting LiONCooler to your vehicle will ensure your cooler is running and can also help recharge the internal LiONCooler battery (Reminder: to recharge the battery, the battery button must be switched ON - yellow light illuminates).



Built-in Safety Control:

When your vehicle engine is running, there is no chance of LiONCooler draining your vehicle battery. However, if you are parked with the engine off and you leave the LiONCooler connected to the 12/24v socket, the cooler will continue to 'draw' power from your vehicle battery. In order to protect your vehicle battery, LiONCooler has safety settings for this situation.

With the LiONCooler switch ON, press and hold the SETTINGS (gear wheel) button for about 5 seconds to change the battery protection mode. There are three options: H(igh), M(edium), L(ow).

For example:

When the unit is connected to the car, we suggest setting the car battery protection to H or M level. L is suggested when the unit is powered in a wall outlet or in 'cordless mode' running on LiONCooler's own battery. 'L' means you don't need to protect anything because you're not connected to a vehicle battery power source.

TIP:

If you have a good memory and can get into a routine of doing the following, simply getting into the habit of UNPLUGGING the 12/24v cord from LiONCooler whenever your vehicle is stationary/parked is another way of ensuring you don't end up with a flat car battery ! Ideally you'd follow the protection steps above but we all love a workaround suggestion! Either way - make sure to protect your vehicle battery!

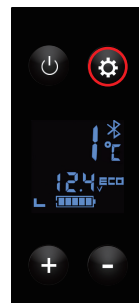
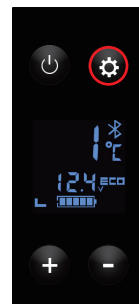
STEP 5. Cooling Power Settings MAX or ECO mode:

When you want a faster 'booster' chill or freeze, setting LiONCooler to MAX mode is the ideal setting. However, keep in mind that using MAX also consumes more power which can be more noticeable in cordless mode and affect the amount of time your battery charge will last. So, we recommend that once your desired temperature is reached and being maintained, that you set the cooler to ECO mode. Pre-chilling drinks/produce ahead of time wherever possible will also enable you to switch to ECO mode sooner; just think of it like placing warm food/drinks in your kitchen fridge which will take longer to cool down and make your fridge "work harder".

With the LionCooler switched ON and running, press the SETTINGS (gear wheel) button to select control mode, and then you can switch between MAX(Quick cooling) and ECO (Energy-saving) mode. Only press the button briefly to 'toggle' between MAX/ECO.

TIP:

Keep a close eye on the LED display screen when holding down the SETTINGS button. If you hold down for too long, it is easy to accidentally find yourself in the

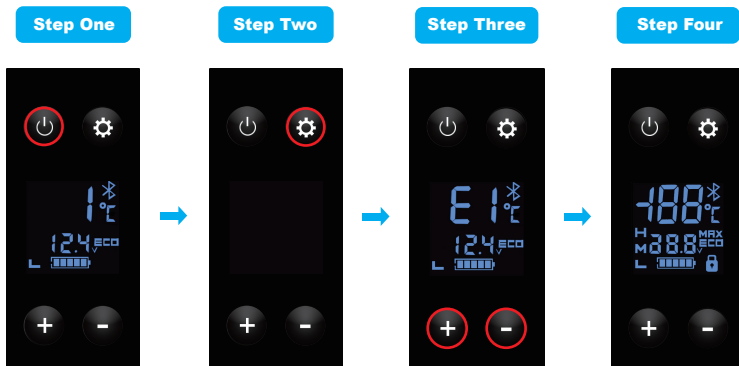


vehicle battery protection settings mode (Step 4). This is no problem. It takes a bit of practice and you can always just step away and start again!

STEP 6. Restore factory settings:

If you wish to clear out any of your LiONCooler previous settings preferences or find some recurring error codes appear, a good idea is to simply clear out the memory by restoring the cooler to its original factory settings. Think of it like refreshing/rebooting your computer or phone from time to time.

Turn ON the battery and turn OFF your LiONCooler (see Step 1) then press and hold the SETTINGS (gear wheel) button for about 3 seconds. Now you'll see E1 on the screen. Press and simultaneously hold down the + and - buttons at the same time until you see "-188" displayed.



NEED MORE HELP?

If you've tried the above Steps and still have questions, please email us and attach any useful images related to your specific issue. Please include details of where and when you made your LiONCooler purchase. We strive to answer support emails within 48hrs. Normal Hours of Business Mon-Fri 9-5pm PST. Thank you for your patience if you call for support; email is usually the best way for us to serve you with technical support.

support@acopower.com

IMPORTANT WARRANTY REMINDER:

Don't forget to Register your Warranty using the card warranty enclosed.



Thanks for choosing ACOPower

Tel: +1- 626-575 7722 Email: Support@ACOPower.com

www.ACOPower.com

Add: 4120 Valley Blvd, Walnut, CA 91789, USA