



# MANGO POWER

## Who are we?

- Mission
- Milestones
- Brand Keywords
- Strategy
- Customer's Feedback

## Product Portfolio

- Mango Power Union
- Mango Power E Series
- Mango Power M Series

## Support for our partners

- Strong Brand Marketing support
- Global Distribution & Warehousing



# Mango Power

Mango Power is a renewable energy brand focused on developing residential power solutions and related accessories.

In partnership with top battery suppliers like CATL, Mango Power is bringing high-quality renewable energy products to consumers to realize our vision:

To bring smart and renewable energy products to every home and realize zero carbon emission for each family.



# Mango Power's Milestone

**2022.05**

Launched new portable power station Mango Power E and on-grid all-in-one home power station Mango Power M

**2022.01**

Crowdfunded more than 1 million USD for the Mango Power Union campaign

**2021.11**

Released the concept of the world's first integrated home and portable power station – the Mango Power Union

**2021.05**

Founded by a group of talented product manager and engineers

# Mango Power Core Principles

**Technological**

**User-oriented**

**Sustainable**

Thoughtful

Innovative

Refined

Vibrant

Harmonious

Trustworthy



# Mango Power Value Propositions

## Economical Choice

Reduce energy costs in all daily scenarios

## Renewable Living

Cleaner lifestyle at home or on the move.  
Replacing the traditional thermal energy with electricity

## Smart Automation

Full control of energy in modern cyber house automation





# Product Philosophy

User-oriented philosophy with  
all-scenario, hassle-free  
installation smart energy  
solution

## All-in-one All-Scenario

Unified energy control system for all scenarios

## Design

Applying modern appliance design and user experience to energy products

## Performance

High efficiency, parallel expansion, easy connection, customized solutions

## Quality

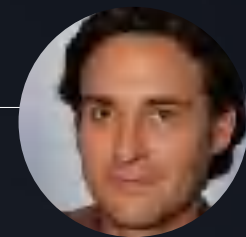
Best-in-class battery cells and safety control design



# What People Are Saying About Mango Power



“ Thanks once again for your excellent work and above all mission of bringing us a product of high excellency. ”



“ Overall the quality seems good and it does have a decent weight to it. ”

Superb Design

Smart green energy

Top battery supplier

## Mango Power Union

Beyond power outage

Power Move

Detachable Module

Tesla Powerwall





# Mango Power Product Portfolio



**Mango Power E**

Portable Off-grid life



**Mango Power Union**

Integrated Home and  
Portable System



**Mango Power M**

All-in-one All-scenario  
Family Energy System



# Mango Power Union

The world's first integrated home and portable power station.

- 6.9kWh Battery 4kW Output
- Detachable Design
- Whole house 24/7 backup with 3 units

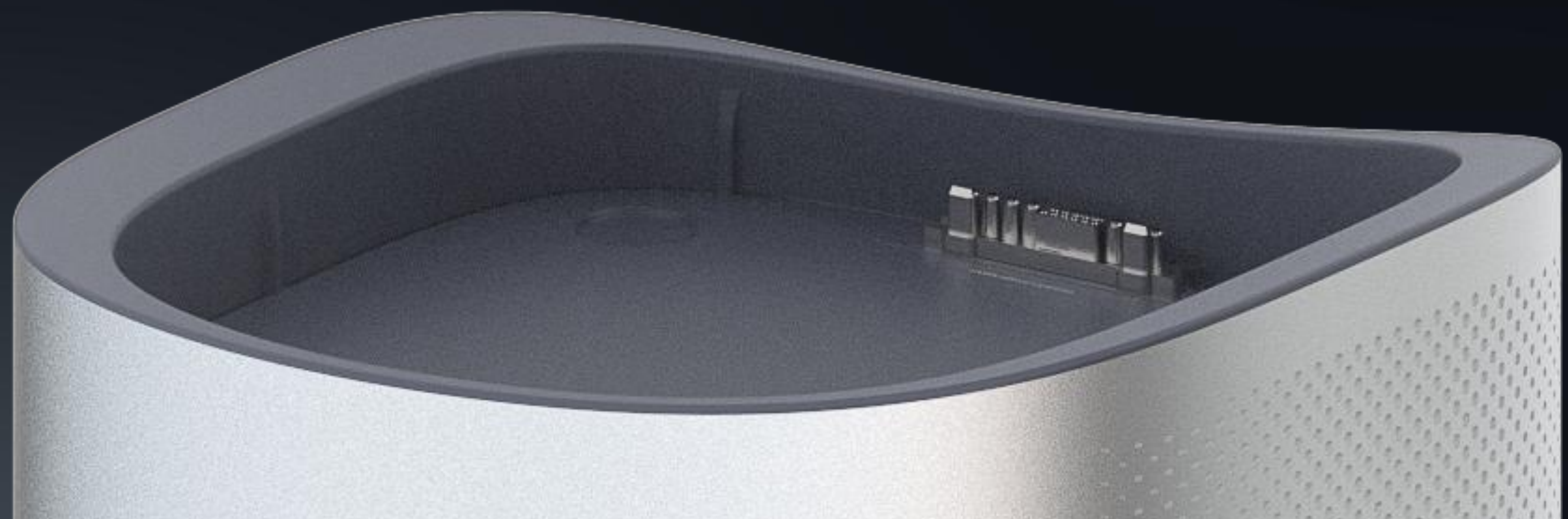






# Sleek and Stylish Design

All-in-one & one for all

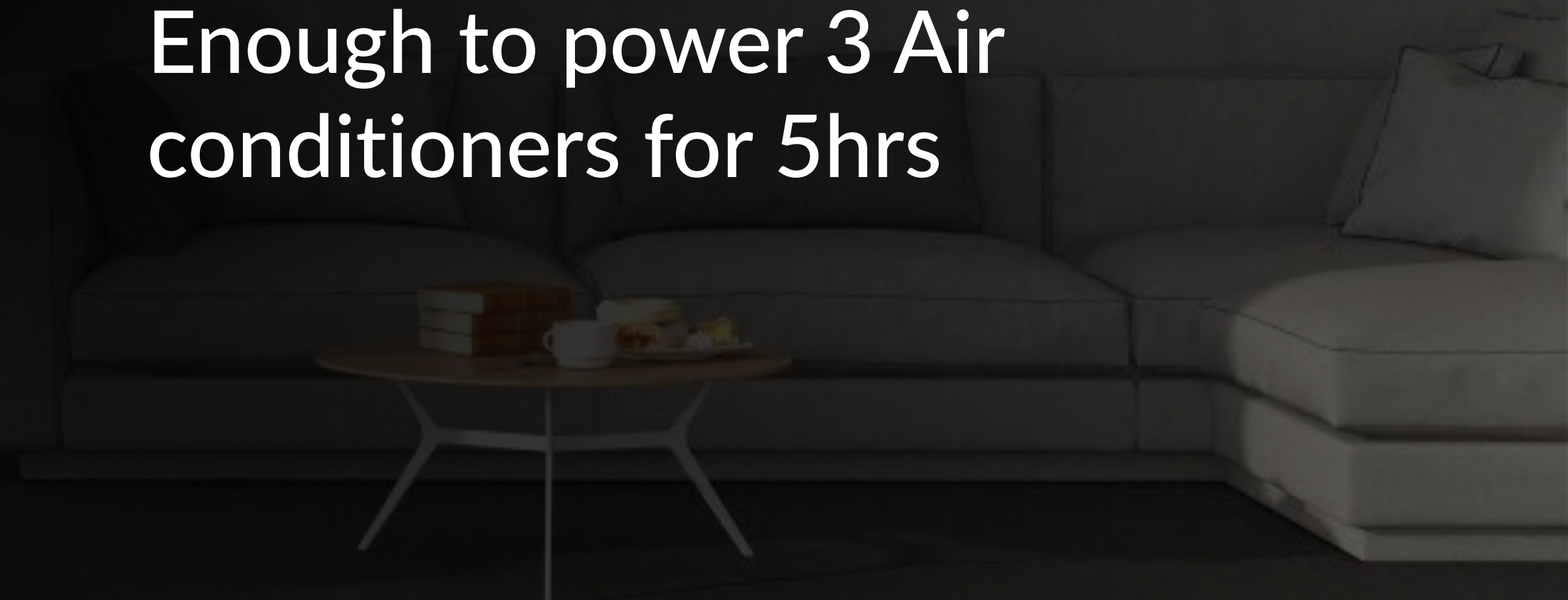






# 6.9kWh Battery 4kW Output

Enough to power 3 Air  
conditioners for 5hrs





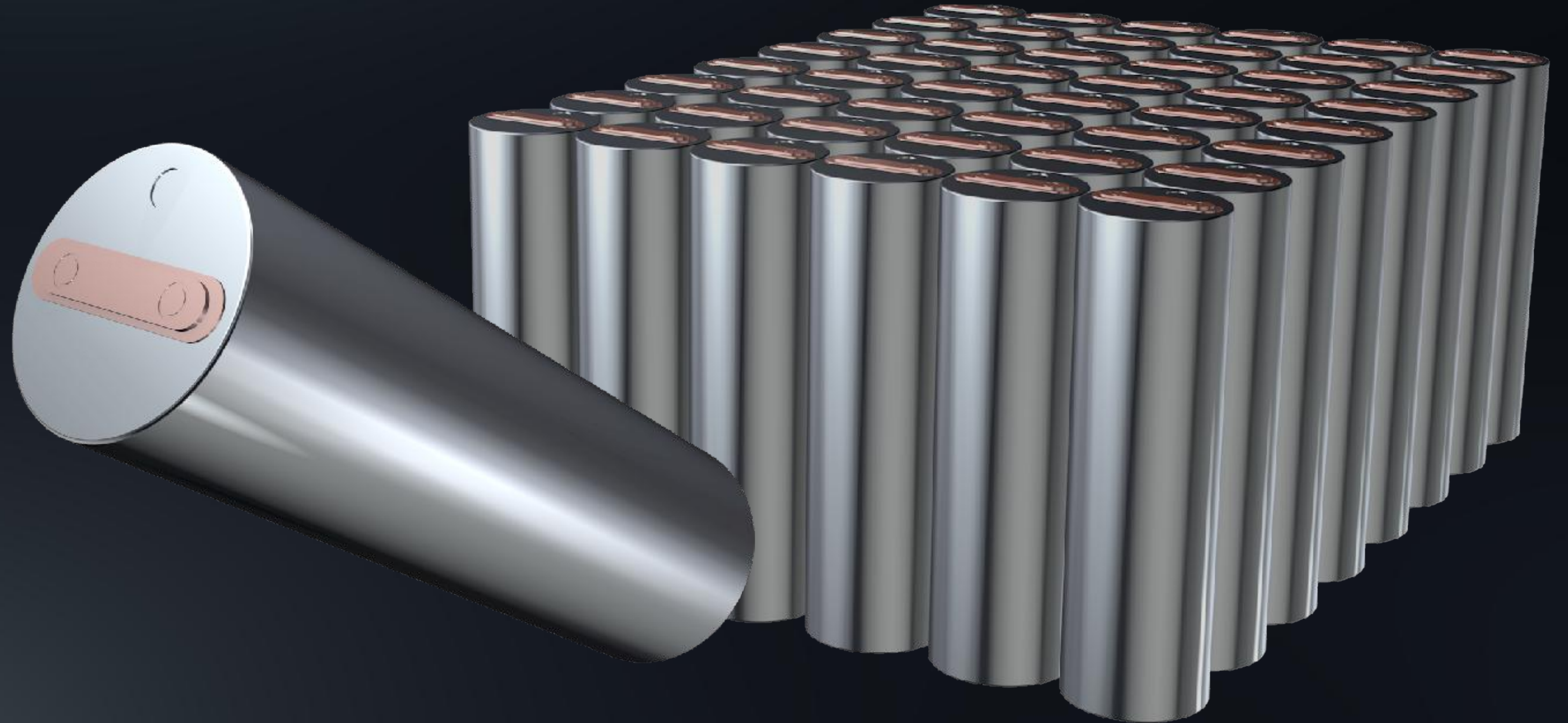
# Outdoor Use Plug and Play

2.3kWh 2kW Power Move





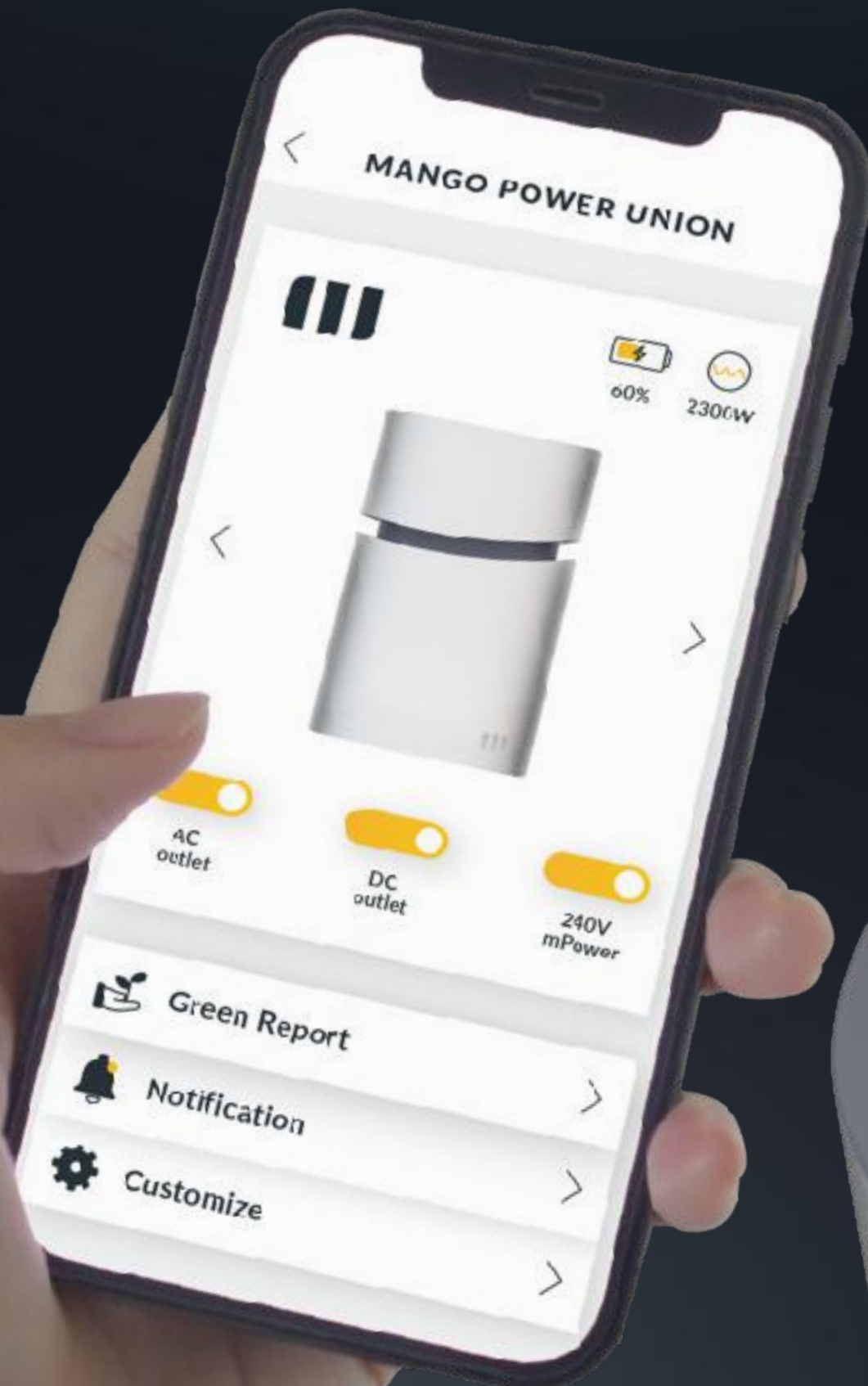
**High Standard LiFePO4 Battery  
3 Years Warranty with total Energy  
Throughput > 13.11MWh**





# Smart Control with App

Remote Control





# Whole-House Backup

Easy Parallel Expansion to  
20.7kWh and 18 circuits







# Mango Power Union

## Specifications

---

### Net Weight & Size

160 lbs  
17.6 in x 13.6 in x 31.7 in

---

### Warranty

36 Months

---

### AC Charging

3300W

---

### Solar Charging

2000W MPPT x 2 (60V-150V)

---

### Home Connection

40A Home Circuit Connection

---

### Output

4 x AC Ports 20A/2000W  
1 x RV Port 30A/2000W  
6 x USB-A QC 3.0 27W  
2 x USB-C PD 65W & 100W  
2 x Wireless Charging 15W  
1 x Car Output 12V/10A  
2 x DC5521 12V/5A

---

### Capacity

6.9 kWh  
(EV class LFP Battery Cell)

---

### AC Output Power

4000W  
(Surge 6600W / 100ms)

---

### 24/7 Seamless Home Backup

Yes

---

### Scalability

Up to 3 devices  
21kWh/13kW Extension

---

### Connection

Bluetooth & Wi-Fi

---

### App Control

Remote Control /  
Smart Measurement /  
Smart Energy and Carbon  
Footprint Report /  
OTA Upgrade & USB  
Firmware Update



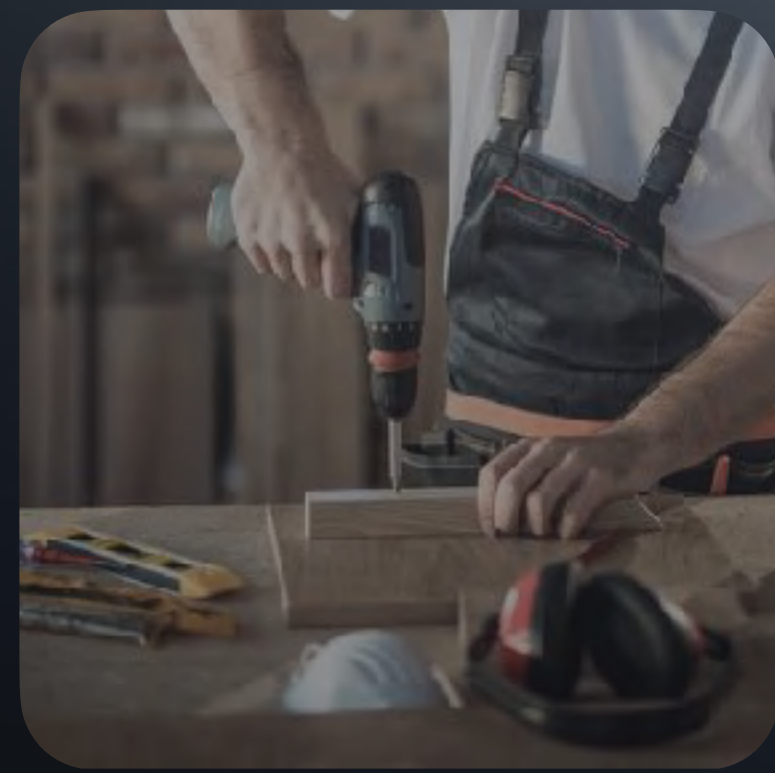
# Mango Power E

Colossal Portable Micro-grid Power Station

- 3.5kWh Battery 3kW Output
- CATL battery cell with 5 years warranty
- Fast charging 80% within 1 hour







# Supports 99% Outdoor Appliances



3.5kWh 3kW with  
6kW Surge Power





# Easy Customization for Different Usages

Expand to 14kWh Battery and  
6kW Output





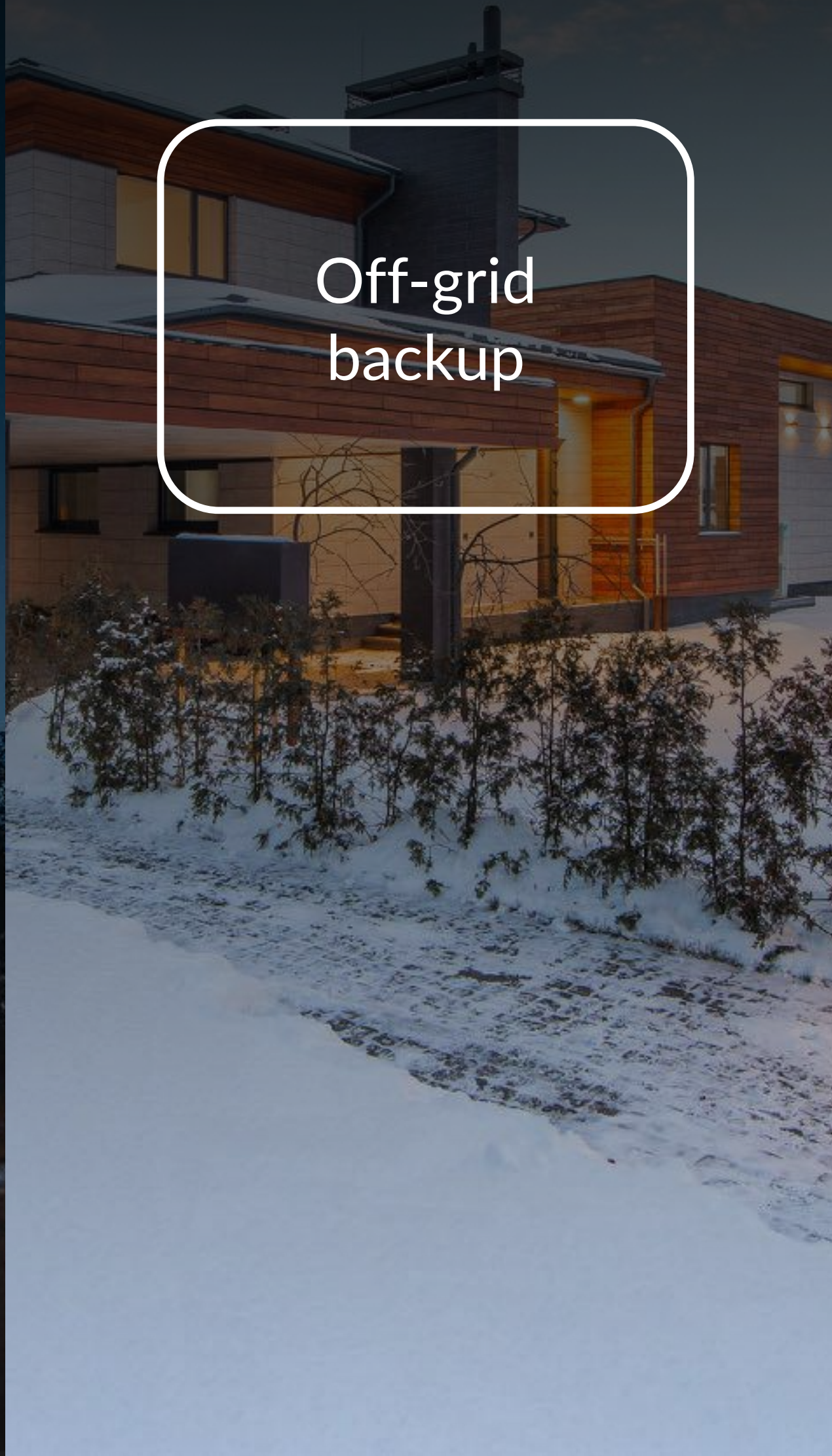
## Outdoor Events

Full Day  
Usage



## Emergency Use

Off-grid  
backup



## RV Connection

RV Port  
Go Further



## Van Life

6kW Peak  
Power





# CATL Battery Cell 5 Years Product Warranty

Longest Duration in  
the Portable Battery  
Category





# Multiple Charging Methods Including EV Station Charging

Fast Charging **80%** within **1** hour



Grid Charging



Solar Panel



Generator



EV Charging Station



Home sub-panel



# Movable Design

Best Choice of Your Off-Grid Life





# Smart Control with App

Wi-Fi & Bluetooth Connection & Control







# Mango Power E

## Specifications

### Net Weight & Size

99 lbs  
17.8 in x 13.6 in x 19.4 in

### Warranty

36 Months

### AC Charging

3000W

### Solar Charging

2000W (60V-150V)

### Output

4 x AC Ports 20A / 3000W  
1 x RV Port 30A / 3000W  
6 x USB-A QC 3.0 27W  
2 x USB-C PD 65W & 100W  
1 x Car Output 12V/10A  
2 x DC5521 12V/5A

### Quick Charge

Recharge to 80% in 1 hour  
Recharge to 100% in 1.5 hours

### Capacity

3.53kWh  
(LFP cell by CATL)

### AC Output Power

3000W  
(Surge Power 6000W / 20ms)

### Connection

Bluetooth & Wi-Fi

### App Control

Remote Control /  
Smart Measurement /  
Smart Energy and Carbon  
Footprint Report /  
OTA Upgrade & USB  
Firmware Update



# Mango Power M

The world's first all-in-one all-scenario family energy system. Easy installation with multiple family-centered function.

- All in one system with built-in inverter, gateway and EV charger
- Easy installation with lower cost
- Modularized batteries for expansion
- 3 Phase Connection







**Aesthetic Design  
Quality for the  
Modern Household**



# Household Energy System For All Scenarios

8-14kW Output with 10-20kWh Battery



**PV Connection  
& Energy  
Storage**



**Fast EV Charging**



**24/7 Power  
Outage  
Backup**

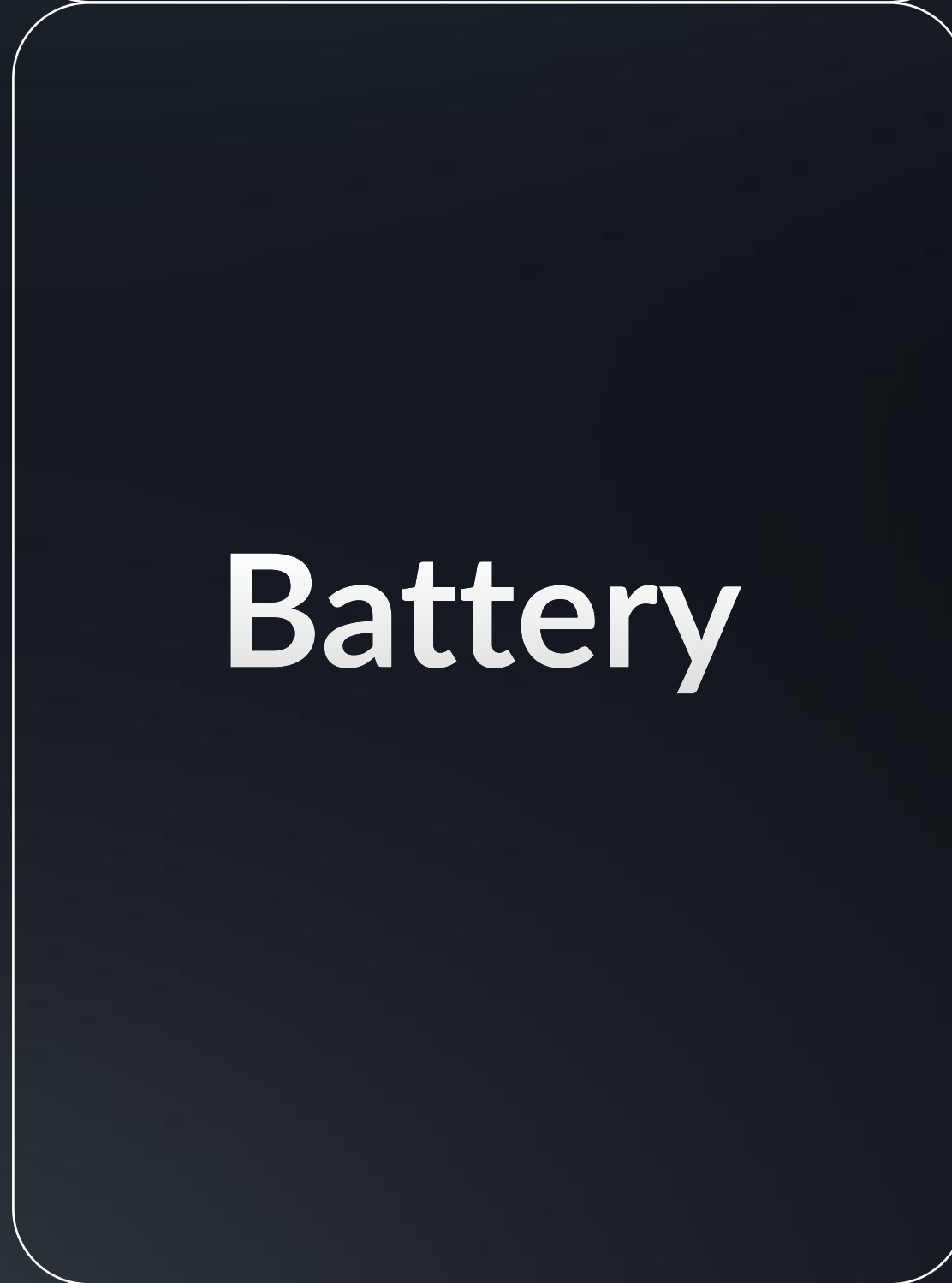


# 11kW Integrated EV Charging Port

Level 2 charging speed  
Smart energy management  
Economical zero-carbon travel







# **Built-in Inverter and Backup Management System**

All-in-one all-scenario  
system for easy use





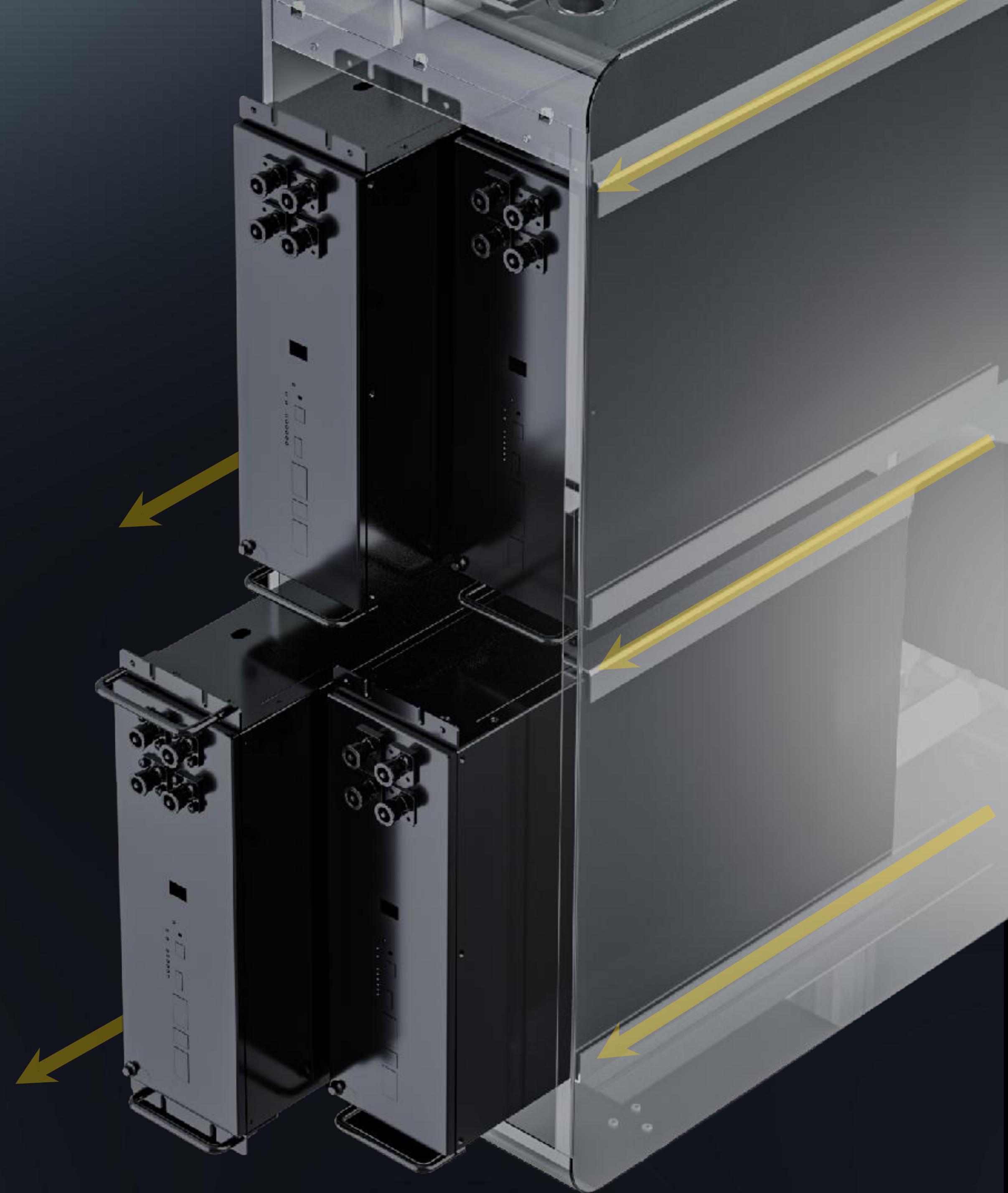
# **CATL LFP** **Battery Cells** **Inside**

The world's first class quality  
Free from fire and explosion



# Easy Slider Installation with Lower Installation Costs

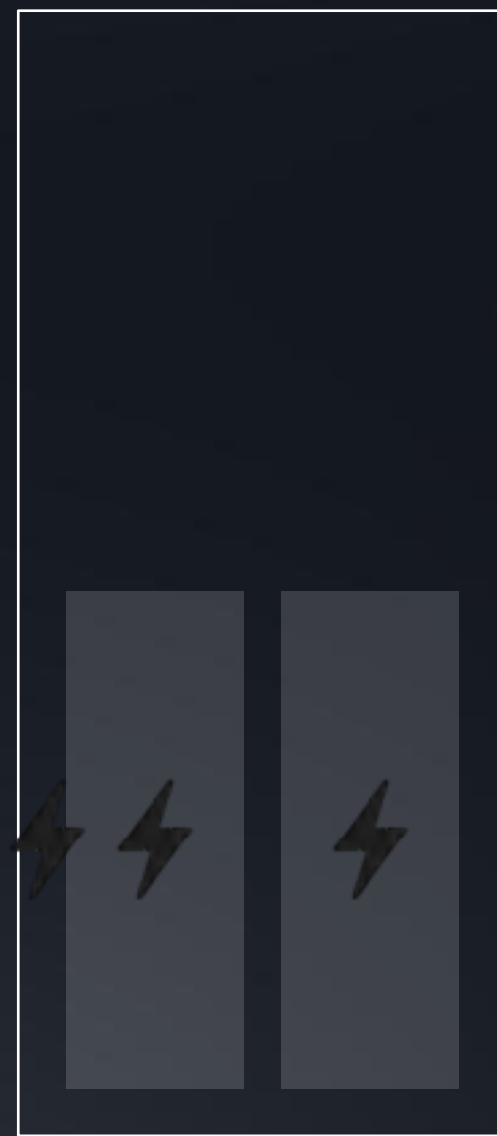
No extra PV & battery inverter,  
gateway and wiring



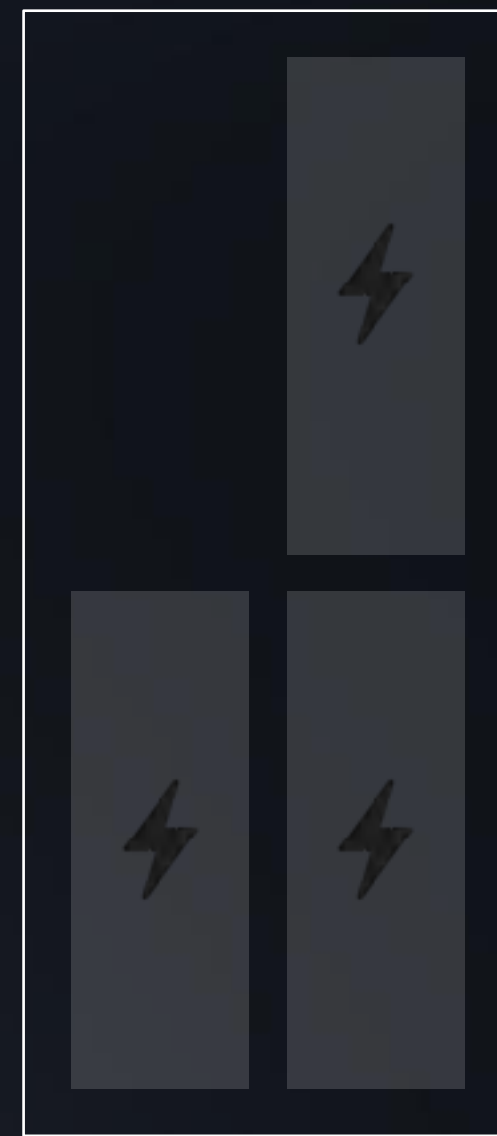


# Modularized Battery from 10kWh to 20kWh

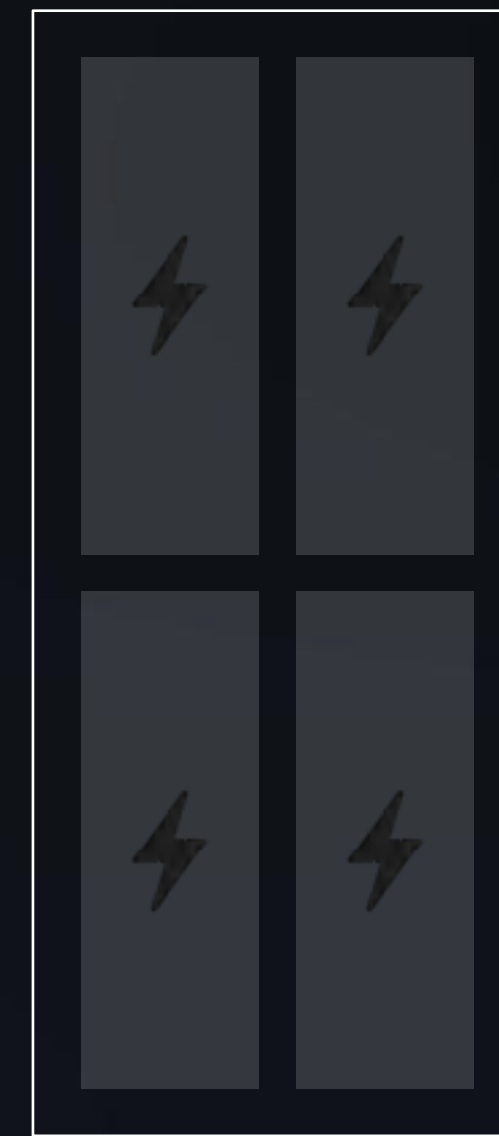
Easy Installation



10 kWh



15 kWh

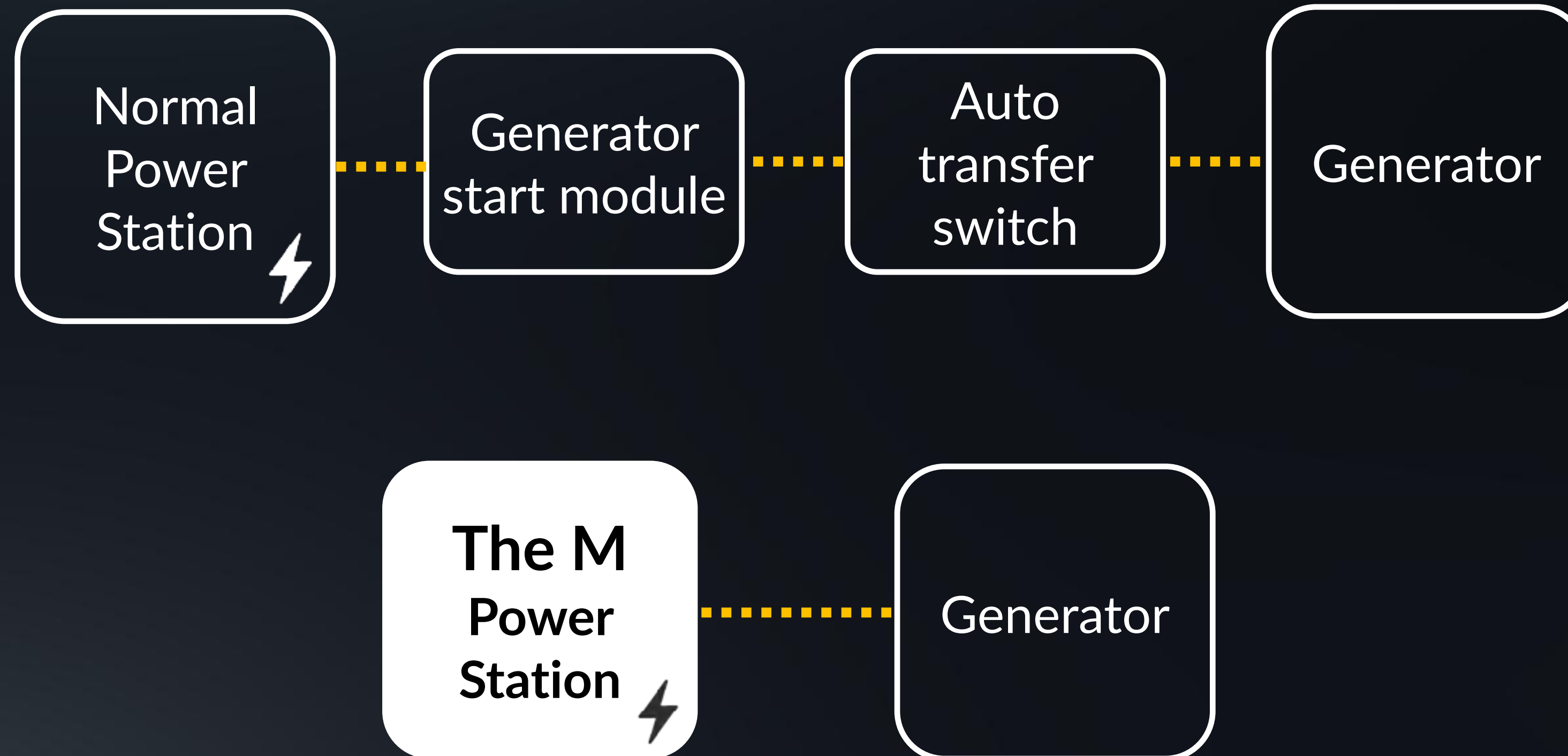


20 kWh



# Smart Generator Control

Automatic switch once power outage detected







# Modularized Design for All Family Usage Scenarios

1 & 3  
phase

On/off  
Grid

200V-600V  
High Voltage

5.12 kWh  
Modularized  
Battery Pack

11kW EV  
Charger





# Smart Control with App

Remote control with 4 different configurable modes





# Smart Control with App

Remote control with 3 different modes



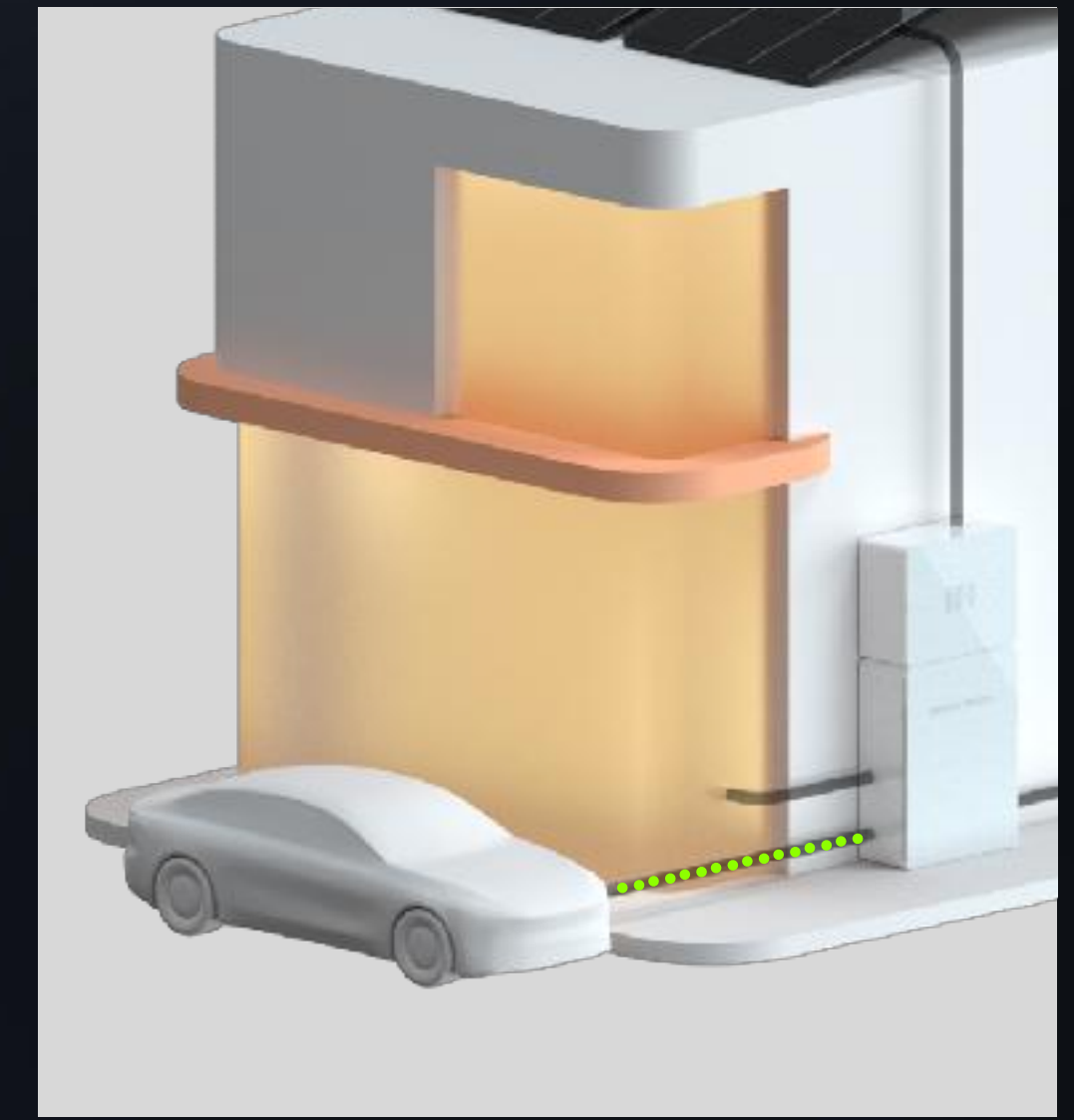
Economical Mode



Back-up Mode



Time-Based Control Mode



EV Charging Mode





# Mango Power M

## Specifications

---

### Energy Capacity

10 kWh ~ 20kWh

---

### On-Grid Power

8/10/12kVA continuous

---

### Backup Power

8/10/12kW continuous  
16/20/20kW peak power(60s)  
Seamless backup transition

---

### Size and Weight

L x W x D  
69.0 in x 31.5 in x 13.4 in  
295 lbs ~ 485 lbs

---

### Battery

LFP cell by CATL  
>6000 cycles

---

### Inverter

Round-trip Efficiency up to 95%  
Maximum Power Point Trackers: 2

---

### Installation

All-in-one design integrated inverter,  
system controller, battery,  
EV charger and backup gateway  
-13°F to 140°F  
IP65

---

### Certifications

Meets north American safety  
And EMI standards

---

### Warranty

10 years

---

### EV Charger

12 kw



# Mango Power Energy System Roadmap



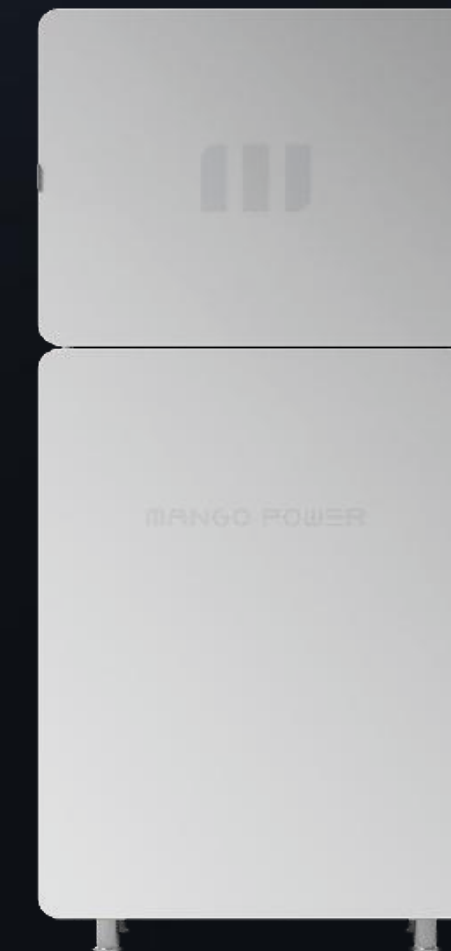
Mango power Union  
4 kW/6.9 kWh

**Available  
In June**



Mango power E  
3 kW/3.53 kWh

**Available  
In June**



Mango power M  
8-12 kW/10-20 kWh

**Available  
In August**



# Support for Our Partners







# Strong Brand Marketing Support

- Product Launch Support
- Public Relations with top media resources
- Online media promotion
- Always-on support
- Global influencers collaboration
- Brand community management





# Smart Control and OTA

Enhanced system security through digital operations & maintenance



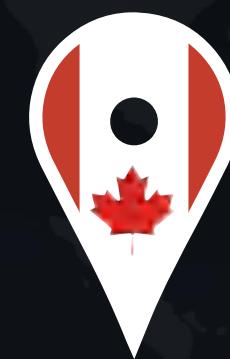
# Local Warehousing and Delivery



Germany Warehouse  
in Nordrhein-Westfalen



US Warehouse  
in California



Canada Warehouse  
in Mississauga



# Customer Service - mCare Project

24\*7 Customer Service for users

- Hotline
- Live chat
- Email

Return & Replace devices from Germany warehouse

