

moda



© 2021 moda fabrics • all rights reserved



# Wildflowers

WILDFLOWER CROWNS  
Finished Size 63"x76.5"



moda

FABRICS + SUPPLIES

modafabrics.com

## Using Cake Mix Papers

Moda Cake Mixes are triangle papers designed to make the parts needed to make the blocks shown on the front cover of each Recipe pad. Just add Layer Cakes or Charm Packs, stitch on the lines, cut apart and piece blocks.

### This is what you need to know to bake a Cake Mix Recipe.

- The Front Cover of each Recipe pad includes the size of the finished pieces, how many pieces each recipe card will make, and block options.
- Fabric preparation - use the fabric squares right out of the package. Do not starch fabrics as some recipe cards have only  $\frac{1}{8}$ " clearance on the four sides.

### Preparing to stitch.

- Layer two squares right sides together aligning the edges closely with the **lighter square on the top**.
- Line up the edge of the paper with the outside point of the pinked edges and pin to secure.
- Shorten the stitch length to 12 to 14 stitches or a machine setting of 1.75 to 2.

### Stitching the recipe card.

- Starting at the star and stitching in the direction of the arrows - **stitch on the dotted line**.
- After all the dotted lines have been stitched, use a rotary cutter and ruler to cut the square apart.
- With the paper still attached, press the seam to the dark triangle. Remove the paper and trim the corners.

For more information:

<https://blog.modafabrics.com/2018/08/cake-mix-101/>

[https://my.modafabrics.com/webfiles/fp\\_cake-mix-essentials\\_info-sheet.pdf](https://my.modafabrics.com/webfiles/fp_cake-mix-essentials_info-sheet.pdf)

## CUTTING & PREP

### BACKGROUND FABRIC

1. To create your own 'Layer Cake' of background fabric, cut (9) 10" x Width of Fabric (WOF) strips. From each strip, subcut (4) 10" x 10" squares.

*\*If you are using Bella Solids Junior Layer Cakes for your background fabric, you can skip Step 1 and enjoy not having to do so much cutting!*

You need (36) 10" x 10" background squares total.

2. From your remaining Background fabric:

Cut (5) 2 $\frac{3}{4}$ " x WOF strips.

- Subcut (4) 2 $\frac{3}{4}$ " x 14" rectangles from 2 of the strips.
- Set aside the remaining (3) 2 $\frac{3}{4}$ " x WOF strips for inner border pieces.

Cut (7) 5" x WOF strips for the outer border.

### PRINTS

Choose (36) 10"x10" squares from your Wildflowers Layer Cake, and save the rest for another project or to use in a scrappy backing.

### BINDING

Cut (8) 2 $\frac{1}{2}$ " x WOF strips.

### PIECING

Use a scant 1/4" seam throughout, apart from on the Cake Mix papers where you should stitch on the lines as directed.

Press seams open unless otherwise noted.

### CAKE MIX PAPERS

Gather your (36) 10"x10" squares of Prints, and (36) 10"x10" squares of Background.

With Right Sides Together (RST), layer each print square with a background square on top.

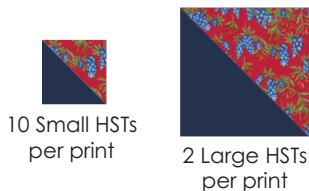
Center (1) Cake Mix Recipe 2 sheet on top of the background square. Secure with pins.

Stitch on the dotted lines.

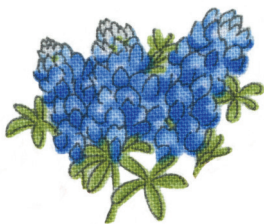
Cut the square apart on the solid lines.

Each pair of squares will yield (10) 2 1/4" finished Half Square Triangles (HST) and (2) 4 1/2" finished HSTs. At this stage (when the blocks are **'unfinished'**), the small HSTs will measure 2 3/4" x 2 3/4", and the large HSTs will measure 5" x 5".

Press the seams on the HSTs toward the background fabric.



Remove the Cake Mix paper. Trim the dog-ears on the HSTs.



### SMALL HST UNITS

Select (4) matching small HSTs and lay out as shown.



Join the pieces, and then press seams open.



Join the rows to complete the units.

Repeat for the other (4) matching small HST's of the same print. Each pieced unit will measure 5" at this stage, before being sewn into larger blocks.

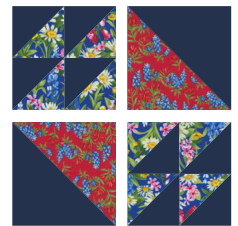


Make (2) 5"x5" unfinished Small HST Units per print

(72) Small HST Units Total

### MAKING THE BLOCKS

Mix your prints so that each block has (2) large HSTs of one print, and (2) small HST units of another print. Lay out blocks as shown.



Join the units to make two rows. Press seams open.

Join the rows to complete the block. Press seams open.



The block will measure 9 1/2" at this stage, before the top is sewn together. Repeat to make (36) blocks.



Unfinished Block Size  
9 1/2" x 9 1/2"

Make (36) Blocks, with mixed prints



### PIECING (cont'd)

#### PREP THE BORDERS

Gather your (3) 2¾" x WOF background strips, for the inner border. Join end to end to make one long strip. Then subcut (2) 2¾" x 54½" strips.

Separate the remaining (72) small HSTs into

- 2 sets of (24) HSTs each for full length borders.
- 2 sets of (12) HSTs each for partial borders. For the partial border, also gather the (4) 2¾" x 14" Background rectangles previously cut.

Piece the 2 Full Length HST borders as shown, making sure the HSTs in each half of the strip point down, and also 'out' toward the side of the quilt.



Piece the Partial HST borders as shown, making sure the HSTs in each half of the strip face 'in' toward the quilt top center, and also 'out' toward the side of the quilt.



Gather (7) 5" x WOF Background strips for outer border. Join end to end. Subcut (2) 5" x 54½" strips for top and bottom borders. Subcut (2) 5" x 77" strips for side borders.



#### FINISHING

Following the quilt diagram on the following page, lay out your blocks in (6) rows of (6) blocks each, alternating the direction of the pieced units. Make sure you're happy with the distribution of your fabrics before you start joining blocks together.

Join the blocks into (6) rows. Alternate your seam direction as shown by the arrows, so that your rows nest nicely together. Join the rows to complete the center of the quilt top.

Attach **INNER BORDERS** (2¾" x 54½") to top and bottom of quilt top center. Press seams toward borders.

Attach **FULL LENGTH HST BORDERS** to top and bottom of quilt top center. Make sure that the print half of the HST's all face toward the quilt center. Press seams toward inner border.

Attach **PARTIAL HST BORDERS** to top and bottom of quilt top center. Make sure that the print half of the HSTs all face toward the quilt center. Press seams open.

Attach **TOP and BOTTOM OUTER BORDERS**. Press seams to the outer border.

Attach **SIDE OUTER BORDERS**. Press seams to the outer border.

Finished quilt top measures 63" x 76½"

Baste, quilt, bind and enjoy!





# Wildflowers

WILDFLOWER CROWNS  
Finished Size 63"x76.5"

## ASSEMBLY DIAGRAM

TOP OUTER BORDER - 5" x 54½"



PARTIAL HST BORDER - 2¾" x 54½"



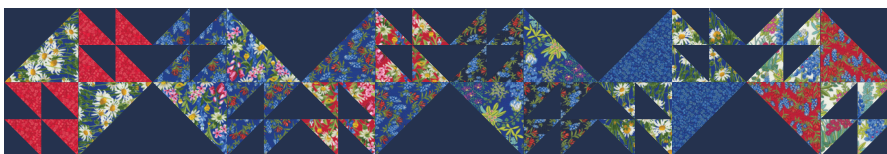
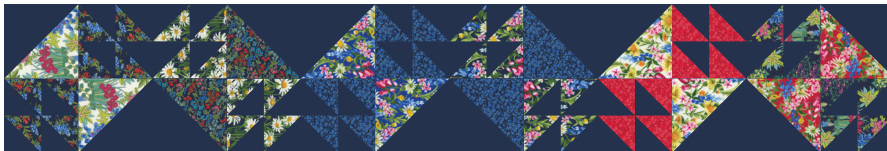
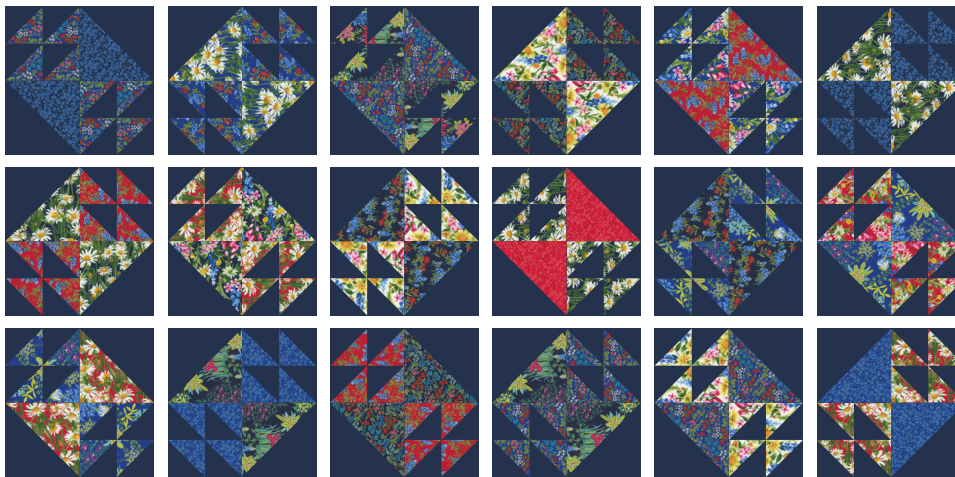
FULL LENGTH HST BORDER - 2¾" x 54½"



INNER BORDER - 2¾" x 54½"



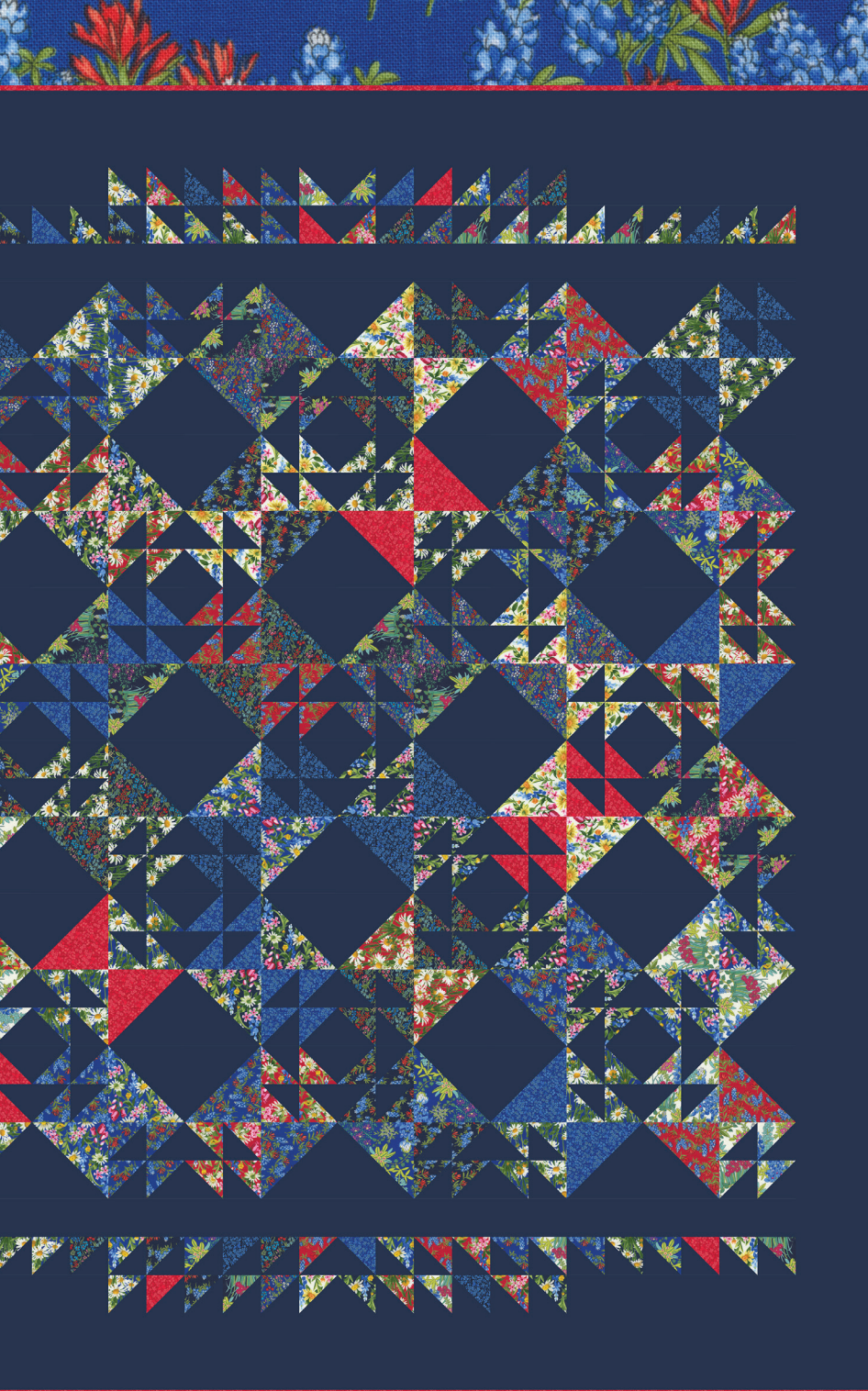
SIDE OUTER BORDER - 5" x 77"



SIDE OUTER BORDER - 5" x 77"



FABRICS + SUPPLIES  
*moda*



© 2021 moda fabrics • all rights reserved



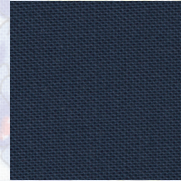
### SUPPLY REQUIREMENTS



(1) LAYER CAKE OF WILDFLOWERS (33620LC)



(1) Cake Mix 2 pad (CM2)



4 YDS. BACKGROUND\* (BELLA SOLID IN NAVY 9900 20)



5/8 YARD BINDING (33625 22)

\*or use 2 JUNIOR LAYER CAKES OF BELLA SOLID IN NAVY (9900JLC 20) + 1.5 YARDS BELLA SOLID NAVY (9900 20)

# Wildflowers

## WILDFLOWER CROWNS

Finished Size 63" x 76.5"



moda FABRICS + SUPPLIES

modafabrics.com