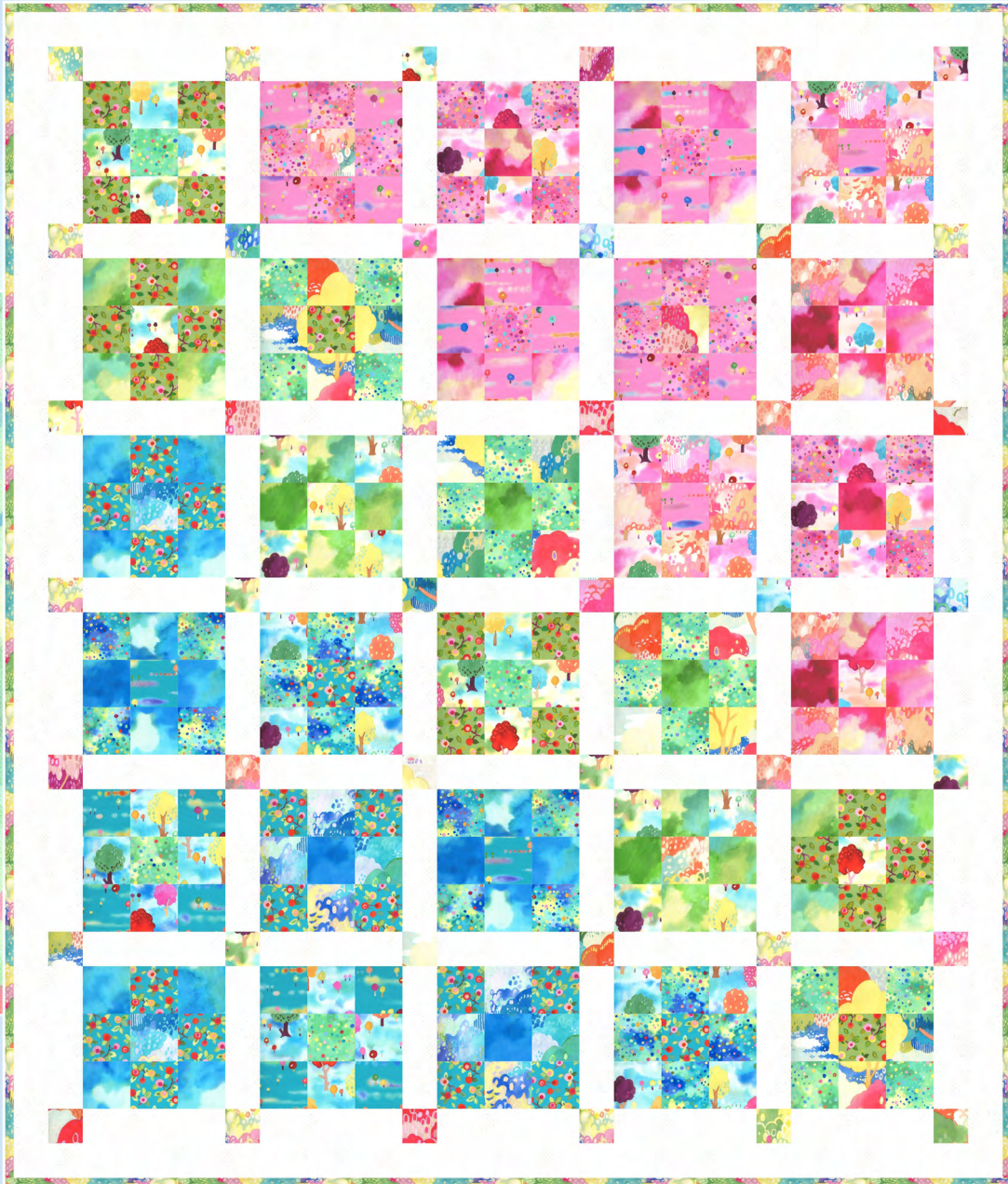


moda



57 1/4" x 67 1/2"

Rain or Shine

Featuring *Fanciful Forest* ^{BY} MOMO

Rain or Shine

by MOMO

Pattern Notes

Finished Quilt Size: 57¼" x 67½"

Finished Block Size: 8¼" x 8¼"

Backing Required: 4⅞ yards

Batting Required: 66" x 76" piece of batting

Cutting Instructions

(WOF = Width of Fabric)



From the Layer Cake (33570LC)

- Gather all Pink Layer Cake squares. From each of (10) Layer Cake squares, cut (9) 3¼" squares. There should be a total of (90) squares.
- Gather all Green Layer Cake squares. From each of (10) Layer Cake squares, cut (9) 3¼" squares. There should be a total of (90) squares.
- Gather all Blue Layer Cake squares. From each of (10) Layer Cake squares, cut (9) 3¼" squares. There should be a total of (90) squares.
- From the remaining Layer Cake squares, cut (42) 2½" squares for cornerstones.



From Background Fabric (1660 11): 1⅞ yard

- Cut (18) 2½" x WOF strips. Subcut (71) 2½" x 8¾" rectangles for sashing.
- Cut (7) 2½" x WOF strips. Piece strips for length using diagonal seams. From the long strip, subcut the following:
 - (2) 2½" x 64" Side Border strips.
 - (2) 2½" x 57¾" Top/Bottom Border strips.



From the Binding Fabric (33571 11): ½ yard

- Cut (7) 2¼" x WOF strips for binding.

Assembly:

Making the 9-Patch Block:

8¼" x 8¼" finished size

Step 1. Blocks in each colorway (Pink, Green and Blue) use a combination of (3) print fabrics. (4) 3¼" squares from each of (2) print fabrics and (1) 3¼" square from another print fabric. Begin by creating fabric combinations for blocks containing (3) print fabrics each as shown below for the Pink, Green and Blue 9-Patch Block colorways.

Step 2. Repeat to make fabric combinations for (10) Pink 9-Patch Blocks, (10) Green 9-Patch Blocks and (10) Blue 9-Patch Blocks. (It is recommended to pair fabrics before assembly to avoid using the same print within a block twice.)

Pink Colorway - Make (10)

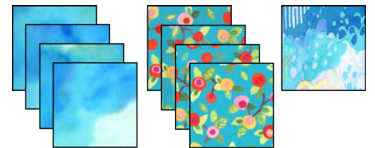


Green Colorway - Make (10)



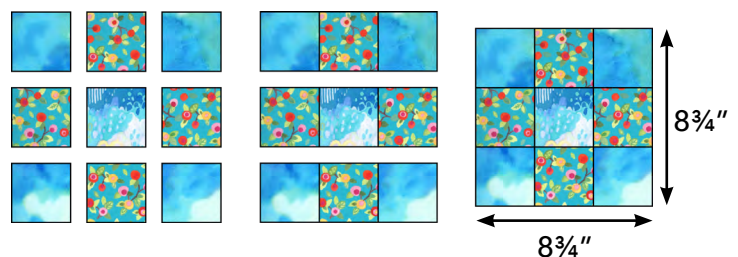
Step 3. Arrange the 3¼" squares as shown, noting the print fabric placement.

Blue Colorway - Make (10)



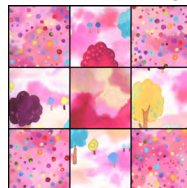
Step 4. Sew the block together in rows first, alternating the direction in which you press the seams in each row.

Step 5. Sew rows together to complete (1) 9-Patch Block measuring 8¾" x 8¾" unfinished.



Step 6. Repeat to make (10) 9-Patch Blocks for each of the (3) colorways. See block examples below.

Pink Colorway



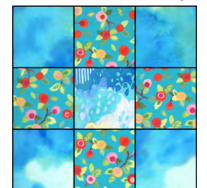
Make (10)

Green Colorway



Make (10)

Blue Colorway



Make (10)

Quilt Assembly:

Step 7. Arrange blocks in a 5 x 6 grid. Pink 9-Patch Blocks should be in the upper right corner of the quilt, Green 9-Patch Blocks should run from the top left corner to the bottom right corner of the quilt, and Blue 9-Patch Blocks should be in the bottom left corner of the quilt. Place (1) $2\frac{1}{2}'' \times 8\frac{3}{4}''$ sashing rectangle vertically in between each block.

Step 8. Arrange (6) randomly selected $2\frac{1}{2}''$ cornerstone squares and (5) $2\frac{1}{2}'' \times 8\frac{3}{4}''$ sashing rectangles to form a sashing row. Sashing rows should be placed between each block row, and at the top and bottom of the quilt top.

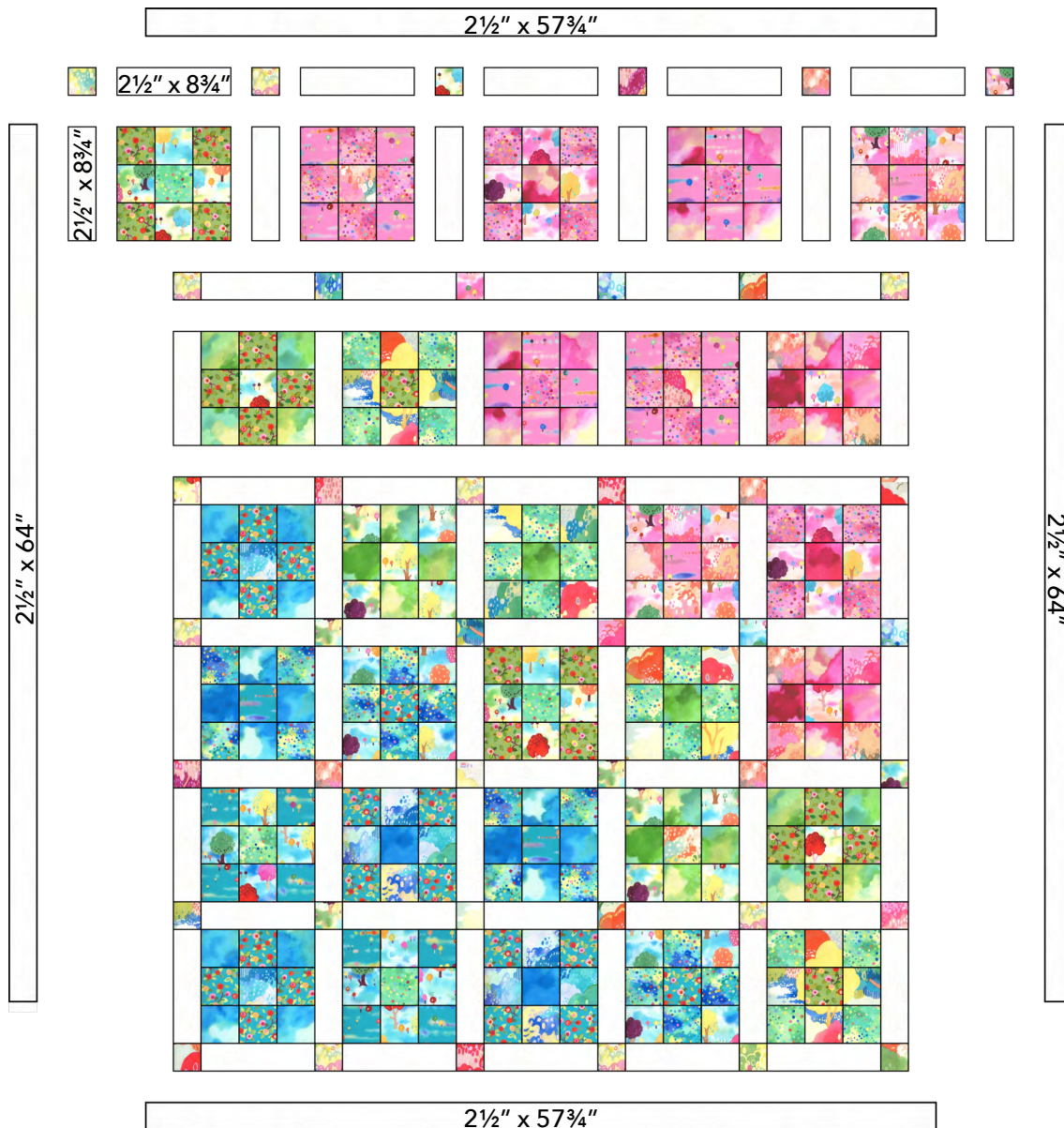
Step 9. Sew block rows together, pressing toward the sashing rectangles.

Step 10. Sew sashing rows together, pressing toward the sashing rectangles.

Step 11. Sew block and sashing rows together to complete the quilt top center. The quilt top center should measure $53\frac{3}{4}'' \times 64''$ unfinished.

Step 12. Sew (1) $2\frac{1}{2}'' \times 64''$ Side Border strip to either side of the quilt top center. Press outward.

Step 13. Sew (1) $2\frac{1}{2}'' \times 57\frac{3}{4}''$ Top/Bottom Border strip to the top and bottom of the quilt top center. Press outward to complete quilt assembly. The quilt should measure $57\frac{3}{4}'' \times 68''$ unfinished.



Step 14. Quilt and bind as desired.

Rain or Shine

Featuring
Fanciful Forest
BY MoMo

moda

Cotton candy trees, watercolor clouds and blossoms that look a bit like gumballs. This is MoMo's delightful vision of a fantasy forest. Soar above the treetops, or wander through an orchard, the hand-painted prints are a mix of detail and soft shapes.

Just as the colors in a real forest change depending on the light, this forest changes from light to dark, cool to warm, and muted to bright.

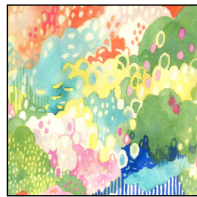
Fabric Requirements



Layer Cake
33570LC
1 Layer Cake



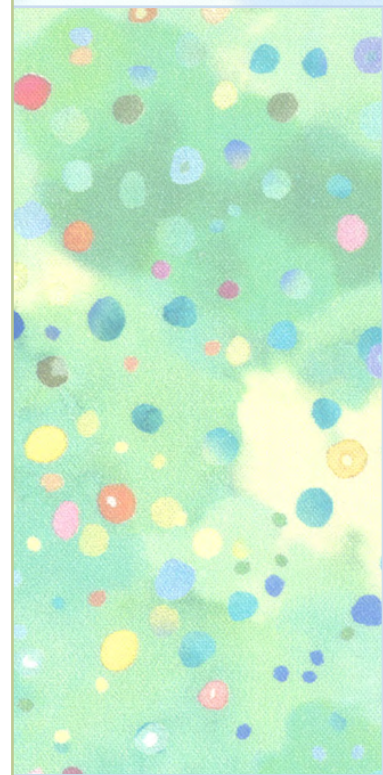
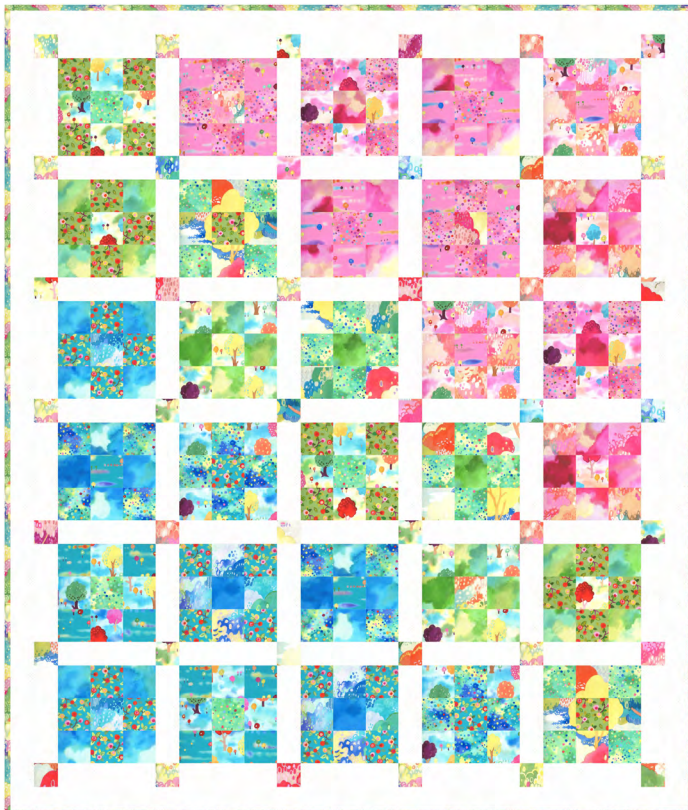
Background
1660 11
1 7/8 yard



Binding
33571 11
1/2 yard

Backing Required: 4 1/8 yards

Batting Required: 66" x 76" piece of batting



moda
FABRICS + SUPPLIES

MY.MODAFABRICS.COM

©2021