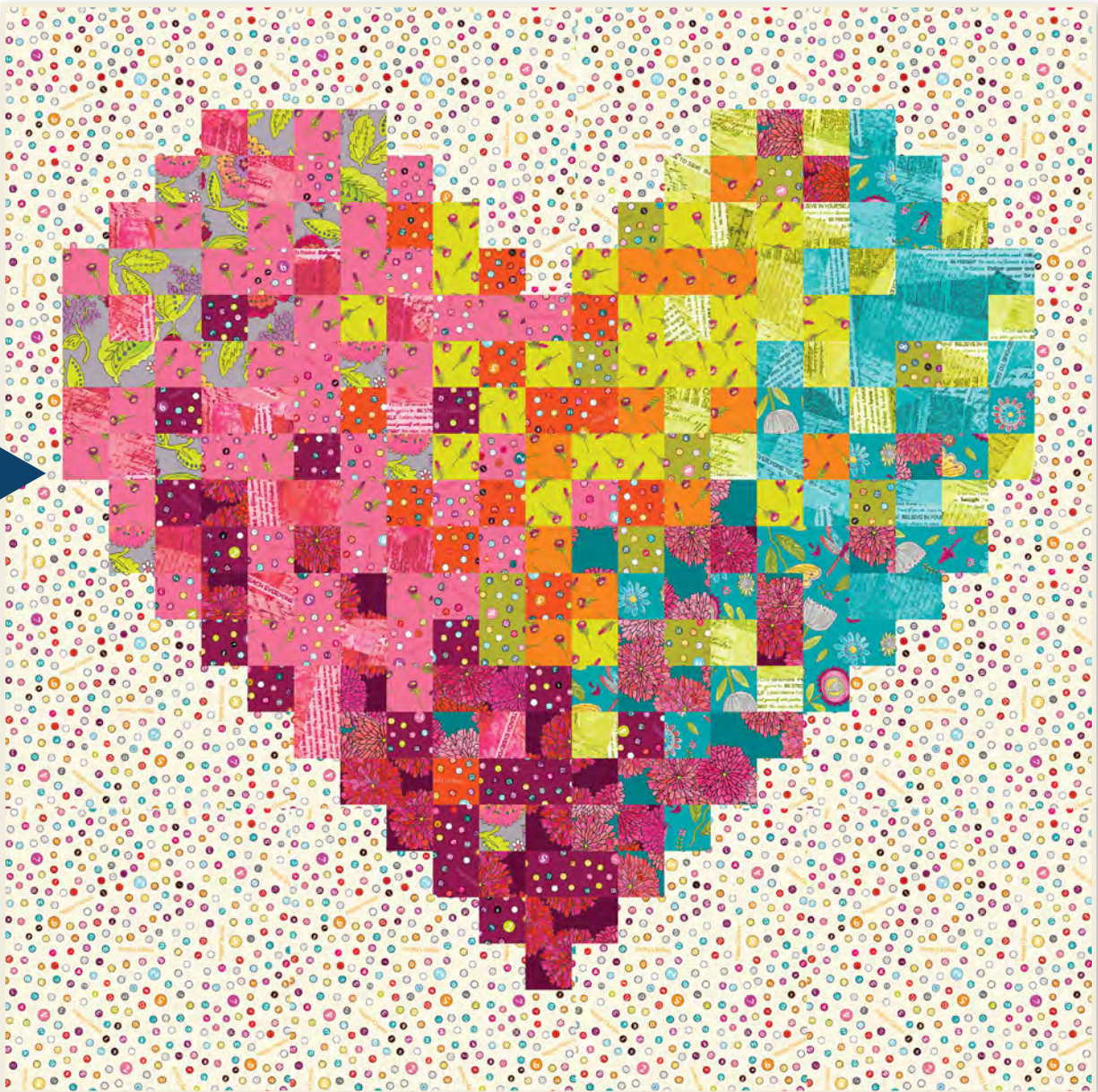


# Full Happy Heart

Designed by Tamara Kate  
Featuring *Happy Chance* by *Laura Heine*

SIZE: 46" x 46"

FREE  
PROJECT



**THIS IS A DIGITAL REPRESENTATION OF THE QUILT TOP, FABRIC MAY VARY.**

**PLEASE NOTE:** BEFORE MAKING YOUR PROJECT, CHECK FOR ANY PATTERN UPDATES AT [WINDHAMFABRICS.COM](http://WINDHAMFABRICS.COM)'S FREE PROJECTS SECTION.

# Full Heart Quilt

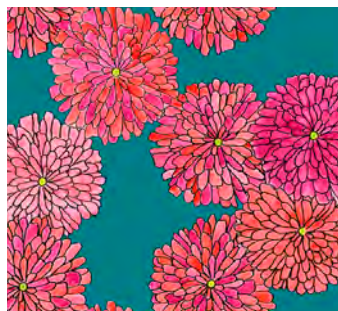
## Fabric Requirements



52691-3 Grey  
HAPPY CHANCE  
Fat Eighth



52693-5 Teal  
HAPPY CHANCE  
Fat Eighth



52694-4 Dark Teal  
HAPPY CHANCE  
Fat Eighth



52694-8 Plum  
HAPPY CHANCE  
Fat Eighth



52695-5 Teal  
HAPPY CHANCE  
Fat Eighth



52695-9 Red  
HAPPY CHANCE  
Fat Eighth



52695-13 Chartreuse  
HAPPY CHANCE  
Fat Eighth



52696-10 Pink  
HAPPY CHANCE  
Fat Eighth



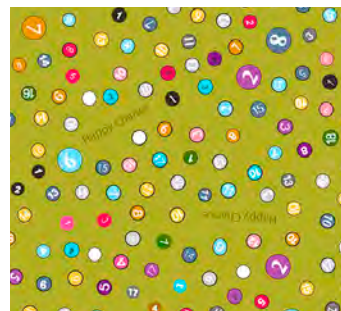
52696-11 Gold  
HAPPY CHANCE  
Fat Eighth



52696-13 Chartreuse  
HAPPY CHANCE  
Fat Eighth



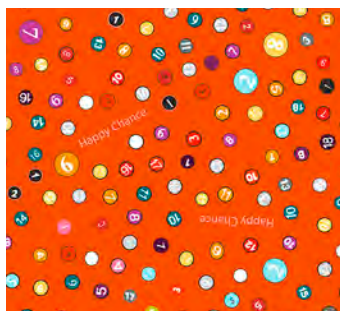
52697-1 Cream  
HAPPY CHANCE  
1-3/4yds (includes binding)



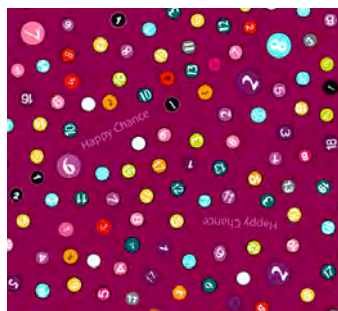
52697-7 Lime  
HAPPY CHANCE  
Fat Eighth



52697-10 Pink  
HAPPY CHANCE  
Fat Eighth



52697-12 Orange  
HAPPY CHANCE  
Fat Eighth



52697-14 Berry  
HAPPY CHANCE  
Fat Eighth

• **REQUIRES 1-1/2 YARDS OF 108" WIDE BACKING FABRIC**

# Full Heart Quilt

## Pattern Instructions

### Also Needed:

- 50" X 50" quilt batting.
- A rotary cutter, a long acrylic ruler, cutting mat, thread.

### Cutting Instructions:

- BINDING FABRIC (52697-1 Cream) - Cut 5 strips 2¼" X WOF (width of fabric). Set Aside.
- BACKGROUND FABRIC (52697-1 Cream) - Cut 16 strips (2½" x WOF). Cut these strips into 270 (2½" squares).
- All Happy Chance Fabrics (except 52697-1 Cream) - For each fabric, cut 3 strips (2½" x 22"). Cut these strips into 24 (2½" squares). You will have a few squares left over at the end.

### Quilt Layout:

- Refer to Diagram 1 on Page 4 for heart layout to aide with fabric placement.
- Tips for arranging color: Colors are loosely arranged as (grey, pink, orange, chartreuse, gold, teals, plum/berry). Start at the top left, move gradually to the top right, then down to the bottom. As pink transitions well to purple, use this colour as the main transition from the top left to the bottom. Try to keep a smooth transition of color when arranging squares. A few unexpected pops of color make things more dynamic.

### Piecing the Quilt Top:

- All seam allowances are ¼".

Once you are happy with the arrangement, start piecing the squares together one row at a time. Be sure to keep your squares in the right order. Press seams open.

Once your rows are all sewn, piece the rows together, in order, aligning seams to finish your quilt top. Press seams open.

### Assembling Quilt:

- Layer backing, batting and quilt top. Baste or pin.

Quilt as desired.

Square up quilt.

Join binding strips together and bind in your preferred fashion.

**PROJECT DISCLAIMER:** Every effort has been made to ensure that all projects are error free. All the information is presented in good faith, however, no warranty can be given nor results guaranteed. Therefore, we assume no responsibility nor damages that may occur when referring to this pattern. When errors are brought to our attention, we make every effort to correct and post a revision as soon as possible. We suggest you check [windhamfabrics.com](http://windhamfabrics.com) for pattern updates and to test the pattern prior to making the project. Test templates first, before cutting all the pieces. Free projects are not for resale.

# Full Heart Quilt

## Diagram 1

