

# "Paisley Splash"

Designed by MY♥KT Mytesha & Katie

Written by Laura Jaquinto

Featuring the Raj Collection by French Bull

Size: 22 1/2" x 33 1/2"




Check [www.windhamfabrics.com](http://www.windhamfabrics.com) Free Project section to see if there are any pattern updates before you start your quilt

**WINDHAM FABRICS**

812 Jersey Ave ~ Jersey City, NJ 07310 ~ 201.659.0444 ~ FAX: 201.659.9719  
[www.windhamfabrics.com](http://www.windhamfabrics.com) email: [retail@windhamfabrics.com](mailto:retail@windhamfabrics.com)

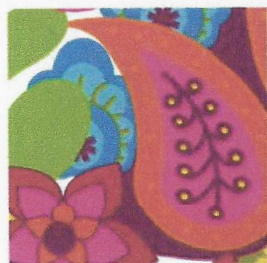
# "Paisley Splash"

Designed by **MY**  **KT** Mylesha & Katie

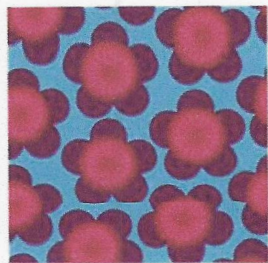
Written by Laura Jaquinto

Featuring the Raj Collection by French Bull

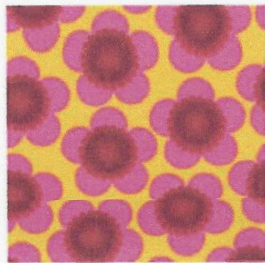
Size: 22 1/2" x 33 1/2"



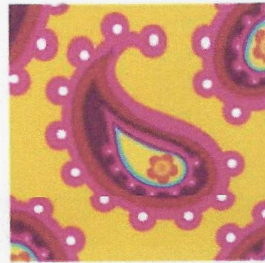
36539-X



36540-3



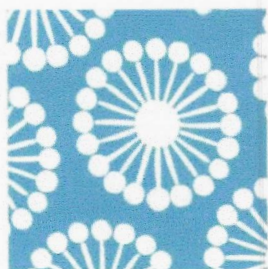
36540-6



36541-6



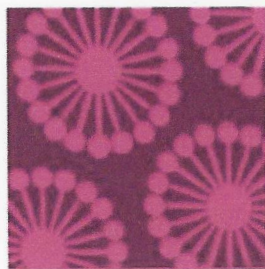
36541-7



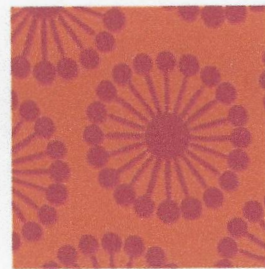
36542-3



36542-5



36542-7



36542-8

## Fabric Requirements

1 2/3 yards 36539-X Multi for elephant, binding and backing

1/8 yard each for paisleys

36540-3 Blue

36540-6 Yellow

36541-6 Yellow

36541-7 Purple

36542-3 Blue

36542-5 Pink

36542-7 Purple

36542-8 Orange

*Special Note: This is an applique quilt. All pieces are to be stitched to the top of the quilt. There are no seam allowance requirements.*

## Cutting:

Following the templates cut out various 'splash' paisley shapes to applique. The paisley shapes cut from 36541 colors 6 and 7 are to be fussy cut from the fabric. Feel free to be creative with your 'splash design' and make this quilt your own.

# "Paisley Splash"

Page 2

36541-6 and 36541-7

Fussy Cut (2) each paisleys

## TEMPLATES

**Special Note** - please make sure you follow the orientation of paisleys as some face to the right and some face to the left. Use the quilt picture as your guide

Template A - elephant

Template B - Large Circle

Cut (1) from 36542-8 Orange

Template C - Small Circle

Cut (1) from 36542-8 Orange

Cut (1) from 36542-3 Blue

Cut (2) from 36542-5 Pink

Cut (2) from 36540-3 Blue

Cut (1) from 36540-6 Yellow

Template D - Small Paisley

Cut (3) from 36542-5 Pink

Cut (1) from 36540-6 Yellow

Template E - Small Paisley

Cut (1) from 36542-8 Orange

Cut (2) from 36542-3 Blue

Cut (2) from 36540-6 Yellow

Template F - Medium Paisley

Cut (2) from 36540-3 Blue

Cut (2) from 36540-6 Yellow

Cut (1) from 36542-7 Purple

Cut (3) from 36542-3 Blue

Template G - Medium Paisley

Cut (2) from 36540-3 Blue

Cut (2) from 36542-3 Blue

Cut (1) from 36542-8 Orange

Cut (1) from 36542-7 Purple

Template H - Medium Paisley

Cut (1) from 36542-8 Orange

Cut (1) from 36542-5 Pink

Template i - Medium Paisley

Cut (2) from 36540-6 Yellow

Cut (1) from 36542-7 Purple

Template J - Medium Paisley

Cut (1) from 36540-6 Yellow

Template K - Medium Paisley

Cut (1) from 36542-7 Purple

Cut (1) from 36540-3 Blue

Template L - Medium Paisley

Cut (1) from 36542-8 Orange

# "Paisley Splash"

Page 3

## Assembly:

1. Following the line drawing, applique the elephant and various paisley's and dots onto the background. This quilt was made using mystic fuse™ and a zigzag stitch around the outside edges.
2. Once all the pieces have been appliqued, take the top, batting and backing and quilt using your favorite method.
3. Cut (4) 2 1/4" x WOF strips and bind off the quilt. **ENJOY!**



LAYOUT GUIDE FOR  
PATTERN PLACEMENTS  
BLOW UP 400% IF YOU WANT  
TO USE IT AS A PLACEMENT GUIDE

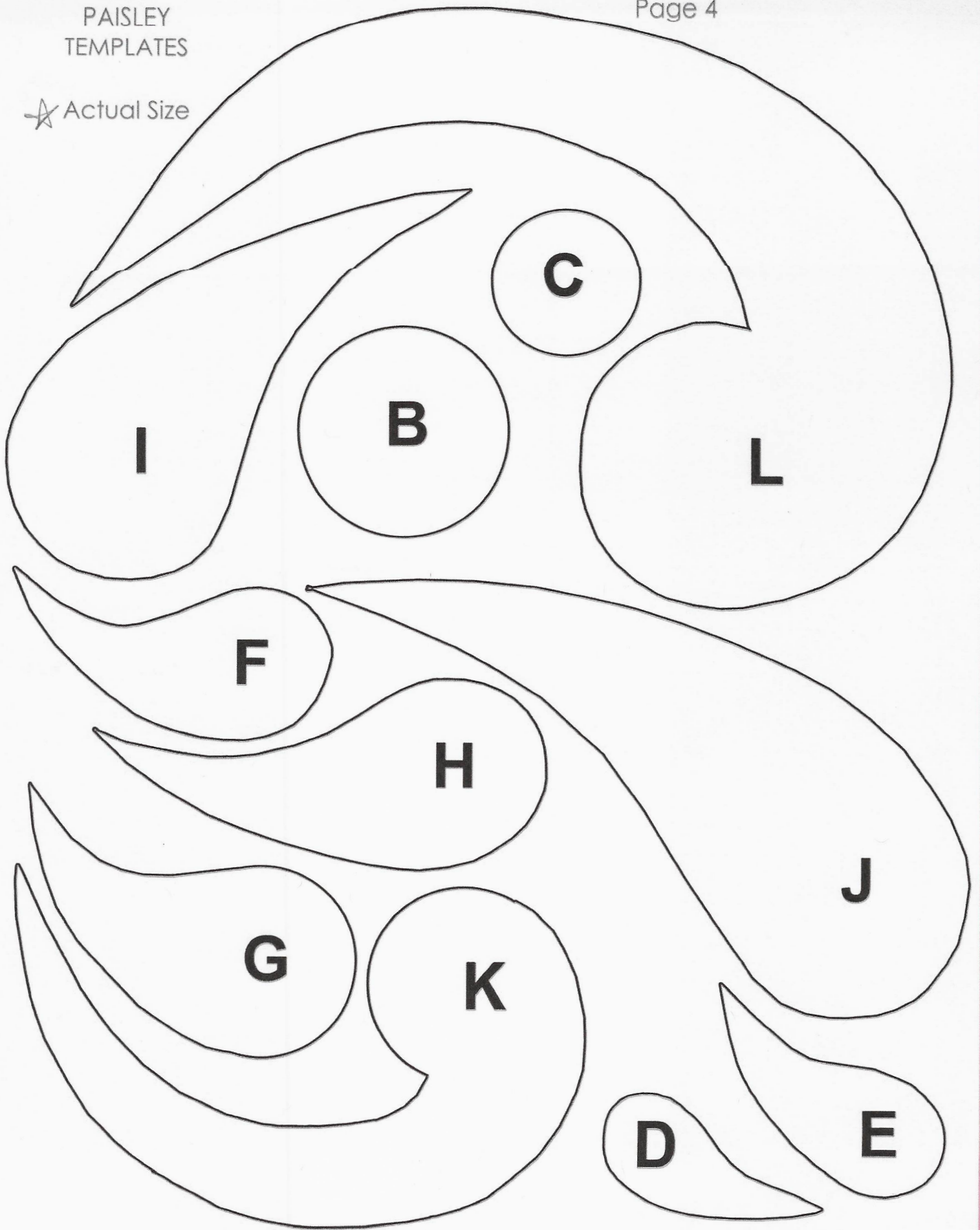
Be sure to visit [www.windhamfabrics.com](http://www.windhamfabrics.com)  
to see the complete collection  
and to download other Free Projects

# "Paisley Splash"

Page 4

PAISLEY  
TEMPLATES

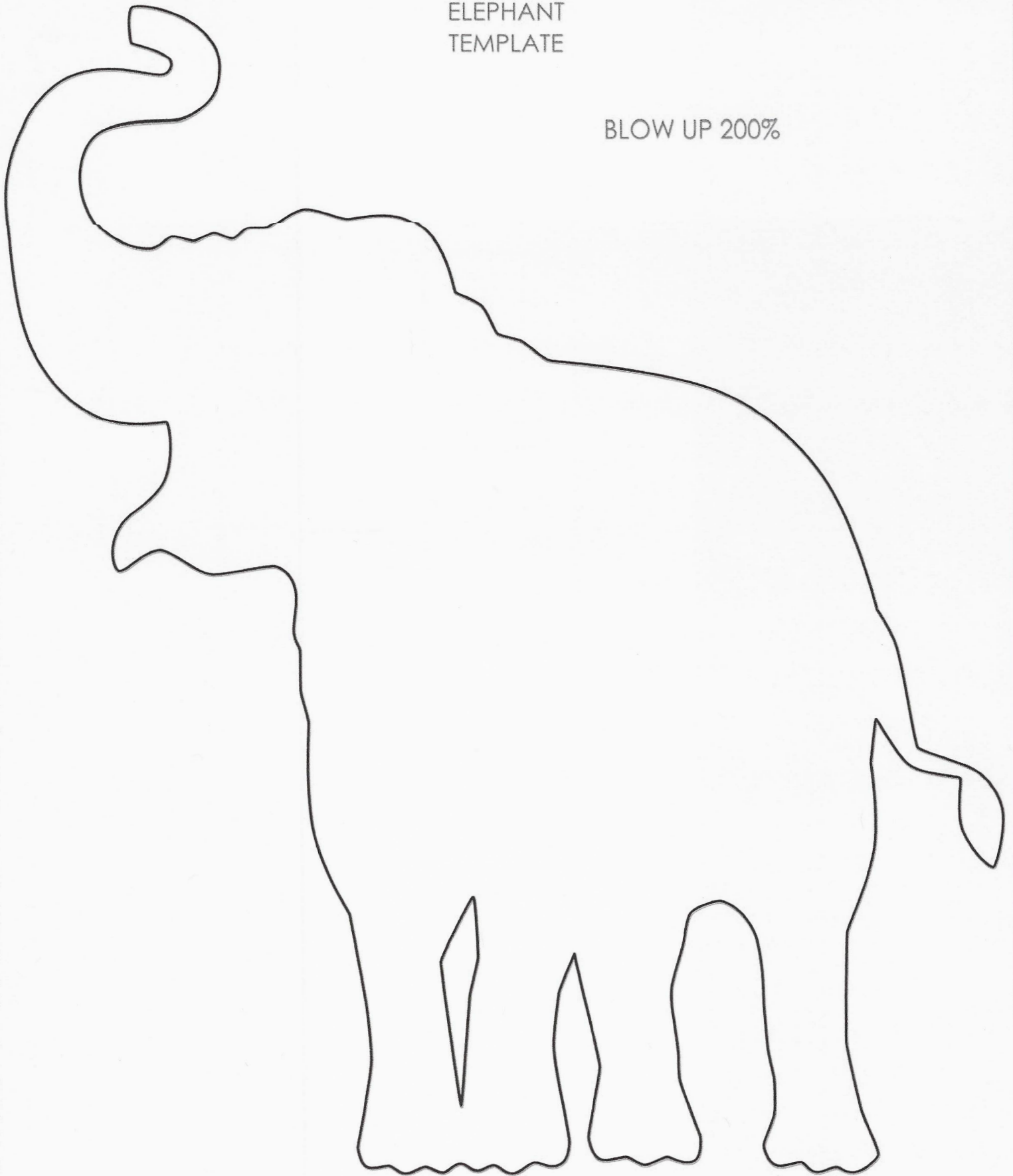
★ Actual Size



# "Paisley Splash"

Page 5  
ELEPHANT  
TEMPLATE

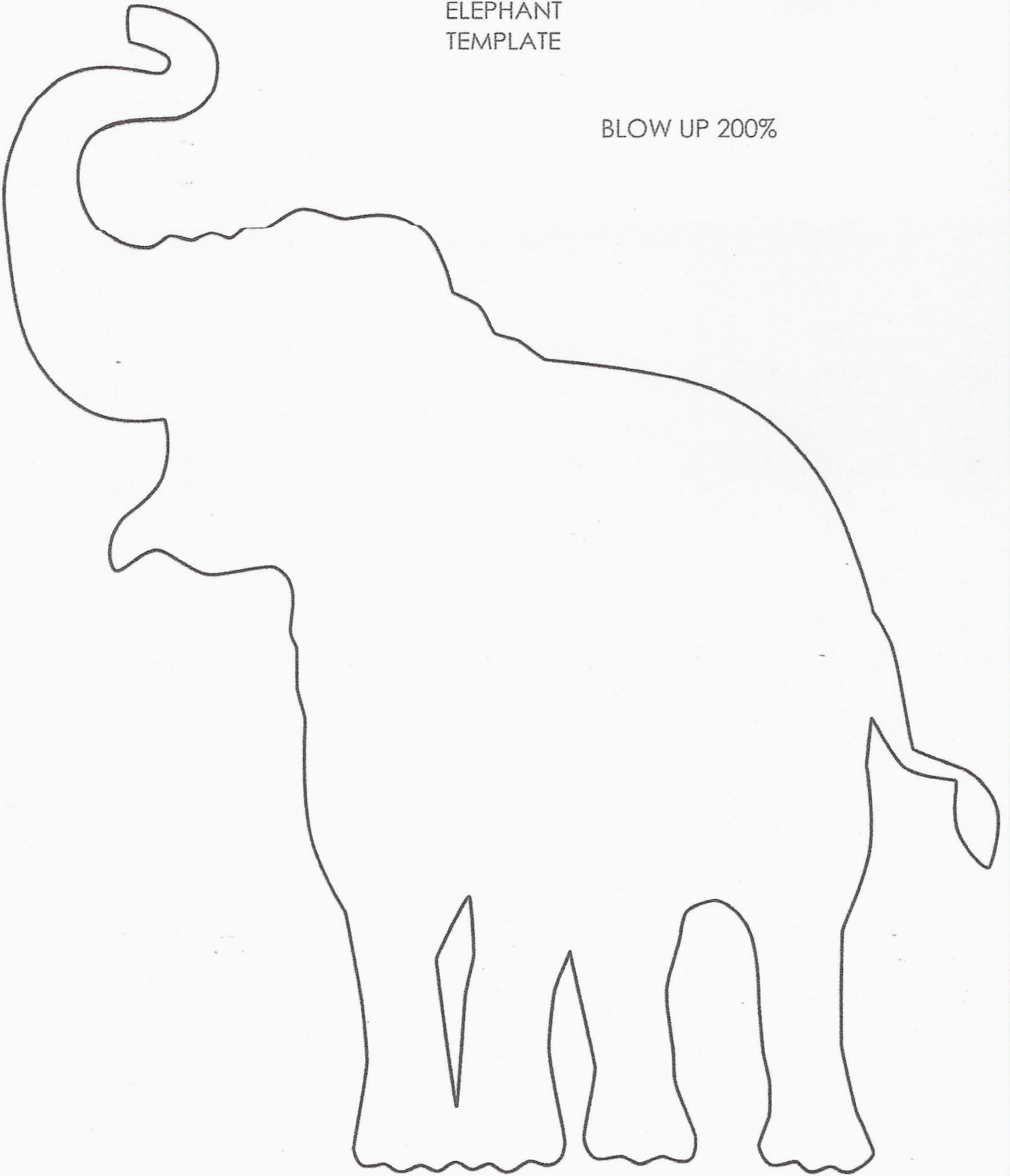
BLOW UP 200%



# "Paisley Splash"

Page 5  
ELEPHANT  
TEMPLATE

BLOW UP 200%

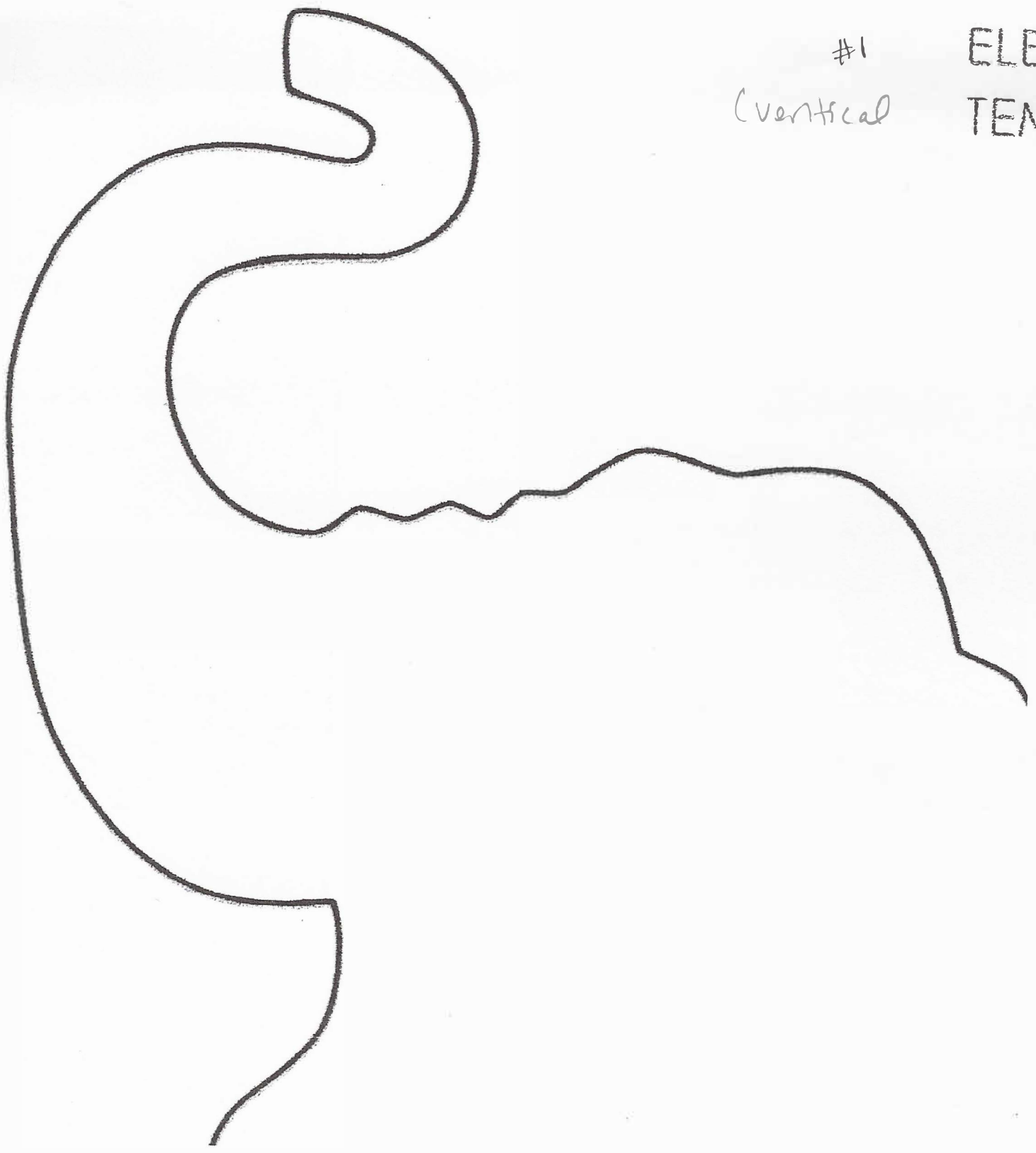


#1

ELEI

(vertical

TEN

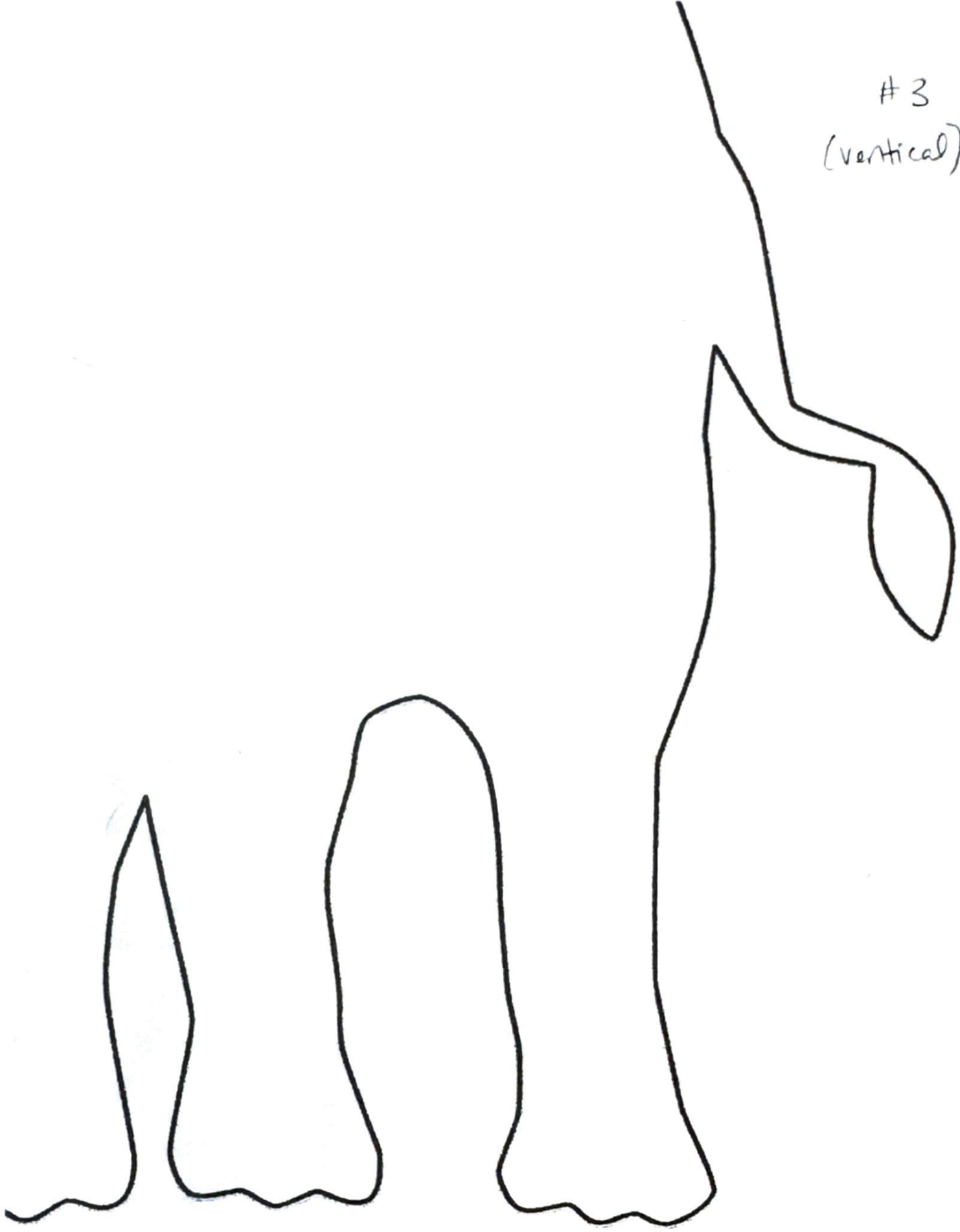


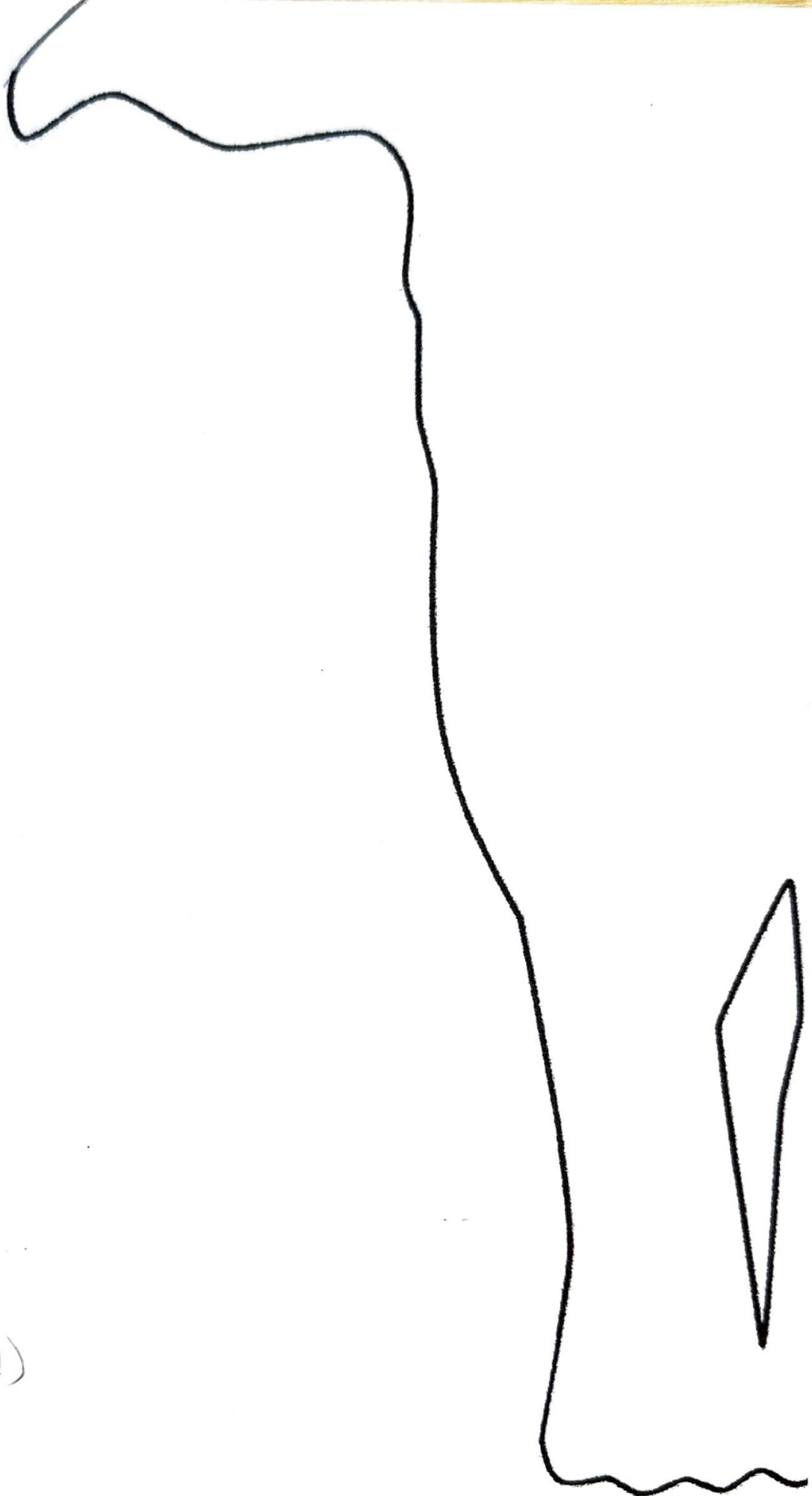


#2 (turn nonzerotalk)



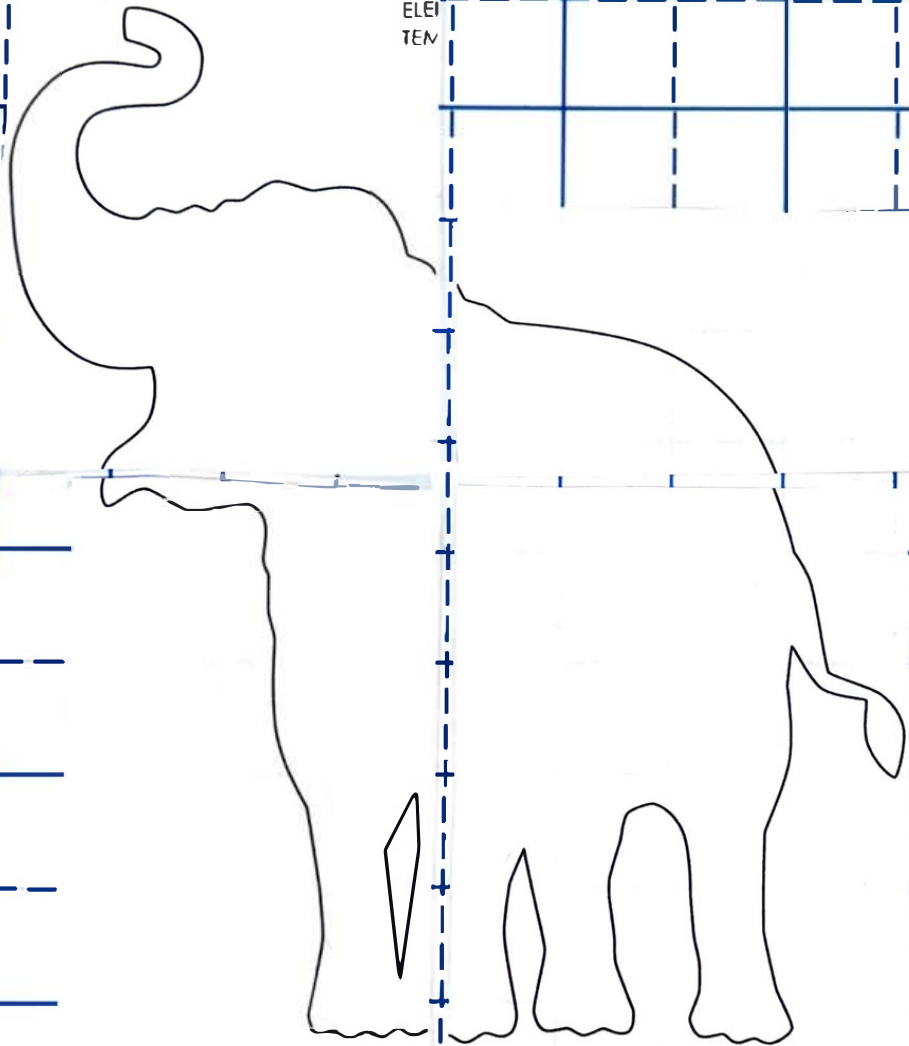
#3  
(vertical)





#4  
(vertical)

PC  
ELEI  
TEN



$\frac{3}{8}$ "

$\frac{1}{2}$ "

$\frac{5}{8}$ "

12 13 14 15 16 17 18 19 20 21 22 23 24

30 31 32 33 34 35 36 37 38 39 40 41 42 43 44 45 46 47 48 49 50 51 52 53 54 55 56 57 58 59 60 61 62

$\frac{3}{8}$ "

$\frac{1}{2}$ "

$\frac{5}{8}$ "

12 13 14 15 16 17 18 19 20 21 22 23 24