



Free Spirit

## Vivacious Quilt

Featuring Vivacious Cotton Lawn by  
Anna Maria

<b>Collection:</b>	Vivacious Cotton Lawn by Anna Maria
<b>Technique:</b>	Pieced
<b>Skill Level:</b>	Intermediate
<b>Finished Size:</b>	80" (2.03m) Square

*All possible care has been taken to assure the accuracy of this pattern. We are not responsible for printing errors or the manner in which individual work varies. Please read the instructions carefully before starting this project. If kitting, it is recommended a sample is made to confirm accuracy.*



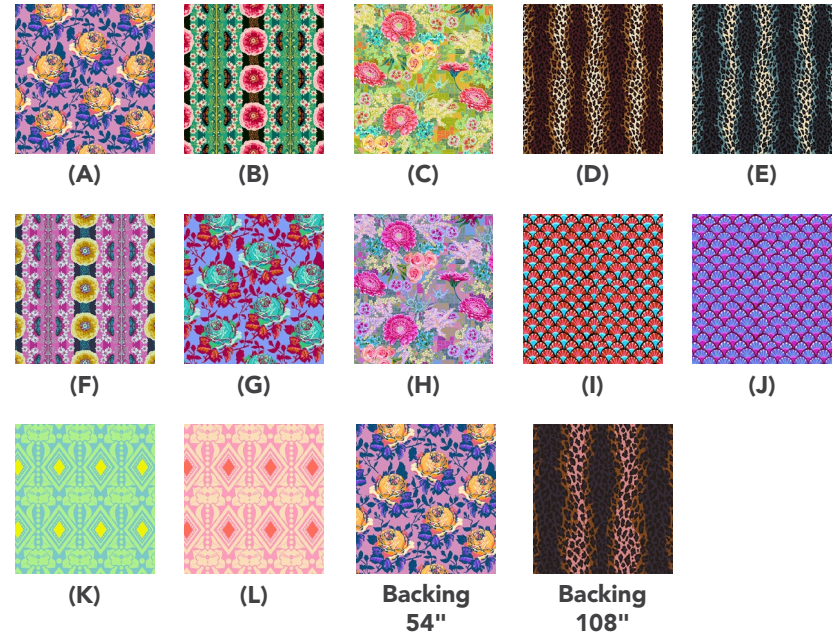
Project designed by Anna Maria | Tech edited by Alison M. Schmidt

## Fabric Requirements

**Note:** The Cotton Lawn collection is 54" wide; all yardage calculations are assuming a minimum usable width of 52".

DESIGN	COLOR	ITEM ID	YARDAGE
<b>(A) Show Off</b>	Melon	CLAH005.MELON	½ yard (0.46m)
<b>(B) Natural Order</b>	Pine	CLAH003.PINE	2 yards (1.83m)
<b>(C) Tapestry</b>	Meadow	CLAH001.MEADOW	½ yard (0.46m)
<b>(D) Spotted</b>	Roar	CLAH006.ROAR*	1 yard (0.91m)
<b>(E) Spotted</b>	Purr	CLAH006.PURR	7⁄8 yard (0.80m)
<b>(F) Natural Order</b>	Magenta	CLAH003.MAGENTA	¾ yard (0.69m)
<b>(G) Show Off</b>	Periwinkle	CLAH005.PERIWINKLE	7⁄8 yard (0.80m)
<b>(H) Tapestry</b>	Lilac	CLAH001.LILAC	½ yard (0.46m)
<b>(I) Fan Club</b>	Caramel	CLAH004.CARAMEL	3⁄8 yard (0.34m)
<b>(J) Fan Club</b>	Plum	CLAH004.PLUM	½ yard (0.46m)
<b>(K) Buttoned Up</b>	Fresh	CLAH002.FRESH	7⁄8 yard (0.80m)
<b>(L) Buttoned Up</b>	Candy	CLAH002.CANDY	½ yard (0.46m)

\* includes binding



## Backing (Purchased Separately)

<b>54" (1.37m) wide</b>			
Show Off	MELON	CLAH005.MELON	5 yards (4.57m)
<b>OR</b>			
<b>108" (2.74m) wide</b>			
Spotted	BLUSH	QBAH006.BLUSH	2 <sup>5</sup> / <sub>8</sub> yards (2.40m)

## Additional Recommendations

- 100% cotton thread in colors to match
- 88" (236.22cm) batting
- template plastic or freezer paper to make large triangle templates
- spray starch or starch alternative
- 2½" wide rectangular and 12½" square rotary cutting rulers (to make fussy cutting easier)
- lightweight fusible interfacing to stabilize outer bias edges of triangles

## Preparation

Print out the template patterns (pages 7-9) for Templates A and B at 100%/actual size, tape together at the join lines, trace onto template plastic or freezer paper, and cut out on the outer line.

## Cutting

**WOF = Width of Fabric**, cut from selvage to selvage  
**LOF = Length of Fabric**, cut parallel to selvage

### TIPS:

- If desired, prewash and iron fabrics first.
- The soft drape of cotton lawn may require a little extra preparation to easily fussy cut. Starch well, press, and let fabrics dry before cutting.
- To fussy cut fabric pieces, spread the fabric out in a single layer right side up, then place the template over the print motif indicated in the cutting instructions. If desired, use a removable fabric marker to help mark fussy-cut areas before cutting with a rotary cutter and ruler.
- Handle cut pieces with bias edges carefully as not to stretch or distort.
- Use a fine dry-erase marker to draw guidelines of the fussy cut motif on top of the ruler/template to help position it for each piece.
- If the fabric moves while marking, place a piece of fine grit sandpaper underneath the fabric to keep it from slipping, but remove it before rotary cutting.

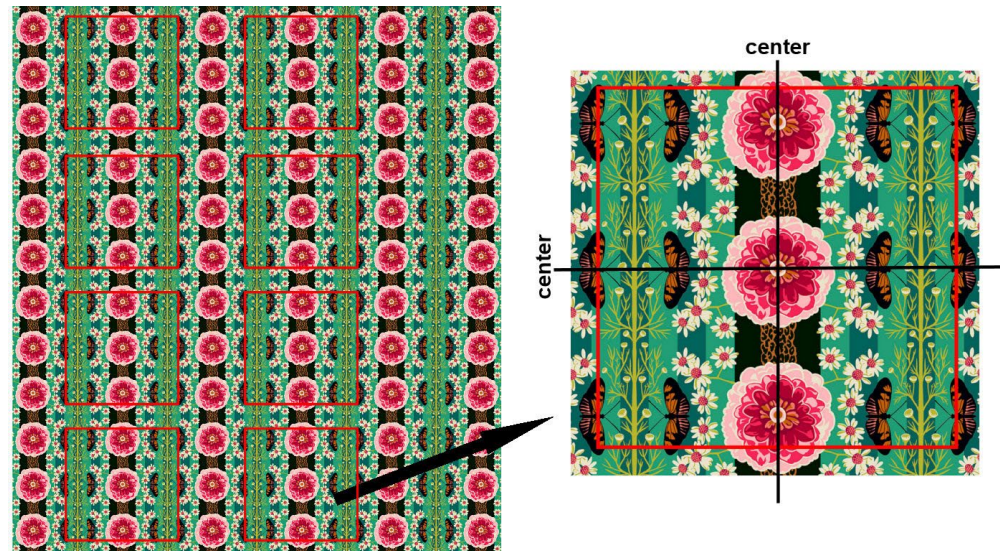
### Fabrics A, C, and H, cut from each:

- (1) 12½" x WOF, subcut
- (4) 12½" squares

### Fabric B, fussy cut:

- (8) 12½" squares, fussy cut centered on a large pink flower motif as shown below.

Fabric B cutting diagram



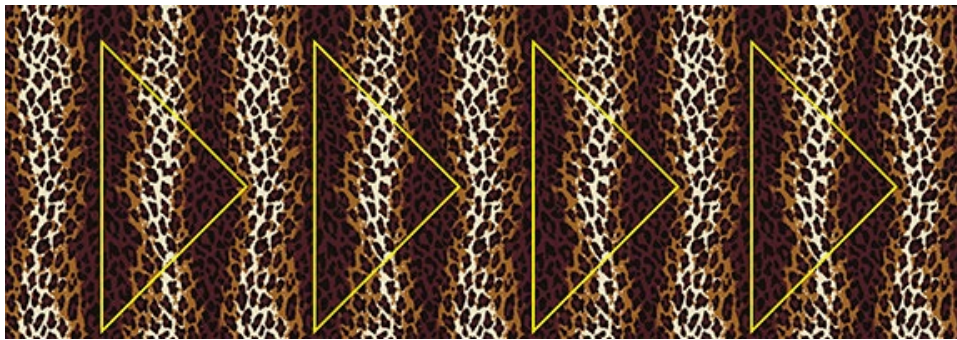


**Fabric D, cut:**

- (4) corner triangles using Template A, fussy cut\* as shown with the long side centered on a dark stripe
- (7) 2½" x WOF for binding

\*Fussy cutting the corner triangles as shown will mean there will be bias edges on the corners of the finished quilt top. You can either fuse ½"-wide strips of lightweight fusible interfacing to the wrong side of the short sides of the triangles to stabilize these edges, or cut the triangles the more standard way, with the short sides on the straight of grain, but the finished quilt will differ from the image on page 1.

**Fabric D cutting diagram**



**Fabric E, cut:**

- (2) 12⅞"\*\* x WOF, subcut
- (4) 12⅞" squares, then cut each square once diagonally to yield (8) side setting triangles

\*\* Cutting this way will mean there will be bias edges on the sides of the finished quilt top. You can either fuse ½"-wide strips of lightweight fusible interfacing to the wrong side of the long sides of the cut triangles to stabilize these edges, or cut the triangles in the more standard way, but the finished quilt will differ from the image on page 1.

To cut the more standard way, so that the long sides of the triangle will be on the straight of grain, cut (1) 18¼" x WOF, subcut (2) 18¼" squares, then cut each square twice diagonally to yield 8 quarter-square triangles.

**Fabric F, fussy cut:**

- (4) triangles using Template B as shown, with the long side along a dark pink background stripe and 2 whole yellow flowers within the inner seam allowance line

**Fabric F cutting diagram**



**Fabric G:**

- (2) 12½" x WOF, subcut
- (5) 12½" squares for cornerstones

**Fabric I:**

- (1) 4⅛" x WOF, subcut
- (4) 4⅛" squares, cut twice diagonally to yield (16) quarter-square triangles
- (2) 2½" x WOF, subcut
- (24) 2½" squares

(The quilt on page 1 shows **Fabric I** cut on the bias, which makes for a more challenging assembly, follow the cutting directions as written, **noting that your finished quilt will have the fabric print oriented differently than shown in the finished quilt.**)

**Fabric J, cut:**

- (1) 12½" x WOF, subcut
- (16) 2½" x 12½" outer sashing strips

## Fabric K, fussy cut:

- (2) 12½" x WOF, so that there are 3 rows of yellow diamonds running across the WOF strip, then subcut  
 (32) 2½" x 12½" middle sashing strips with each strip centered on 3 yellow diamonds

## Fabric L, fussy cut:

- (1) 12½" x WOF, so that there are 3 rows of red diamonds running across the WOF strip, then subcut  
 (16) 2½" x 12½" inner sashing strips with each strip centered on 3 red diamonds

## Instructions

**Note:** All seam allowances are ¼" and pieces are sewn right sides together. Handle pieces with bias edges gently to avoid stretching. When sewing a piece with a bias edge to a piece with a straight-of-grain edge, place the bias edge down towards the feed dogs to help manage any potential stretching. Press after each seam in the direction indicated in the pattern.

## Quilt Top Assembly

1. Follow the **Quilt Layout** diagram (page 6) to arrange (2) each **Fabric E** triangles and **Fabric J** outer sashing strips and (1) **Fabric A** square for Block Row #1, making sure the triangles are oriented as shown in the diagram (if desired, keep all the clamshell tips in the **Fabric J** sashing strips pointed in the same direction throughout the quilt). Sew the pieces together into a row. Press seams toward sashing strips. Repeat to make a second identical row, Block Row #7. Set aside carefully.
2. In the same manner, arrange (2) each fussy-cut **Fabric F** triangles and **Fabric B** squares, (1) **Fabric G** square, and (4) fussy-cut **Fabric K** middle sashing strips, making sure the fussy-cut prints are oriented as shown in the diagram. Sew together, making sure that the row doesn't hang off your work space as you sew, as this can cause it to stretch. Press as in step 1 to complete Block Row #2. Repeat to make a second identical row, Block Row #6. Set aside carefully, making sure rows are stored flat (it's okay to fold gently, but don't let them hang off the edge of a table or over the back of a chair as they may stretch).

3. Making sure to orient the **Fabric E** triangles and **Fabric B** squares as shown, arrange and sew the pieces together for Block Row #s 3, 4, and 5 (which is identical to #3). Press as before.
4. Sew a **Fabric I** quarter-square triangle to each short end of a **Fabric J** outer sashing strip, aligning the square corners of the triangles with one side of the sashing strip (the points will stick out past the strip at the other side, which is fine), to make Sashing Row #1 (if desired, keep all the clamshell tips in the **Fabric I** triangles and squares oriented in the same direction throughout the quilt). Repeat to make a second identical row, Sashing Row # 8. Press towards the sashing strips.
5. Following the **Quilt Layout** diagram (page 6) for fabric placement, arrange **Fabric I** quarter-square triangles and cornerstones with **Fabric K** middle and **Fabric J** outer sashing strips as shown for Sashing Row #2. Sew and press as in Step 4, and repeat to make a second identical row, Sashing Row #7.
6. In the same manner, arrange and sew together the remaining **Fabric I** quarter-square triangles and cornerstones, and **Fabric K** middle, **Fabric L** center, and **Fabric J** outer sashing strips as shown to make Sashing Rows # 3, 4, 5, and 6.
7. Sew Sashing Row #1 to the top of Block Row #1, pinning at seam intersections and nesting seam allowances. Press. Continue sewing remaining Sashing Rows to Block Rows, then sew Sashing Row #8 to the opposite side of Block Row #7.
8. Sew the joined Sashing/Block Row together in the same manner, working from the top left and bottom right corners of the quilt top towards the center, so that the last seam sewn joins the two halves of the quilt top. Add the final two **Fabric D** corner triangles to the upper left and bottom right corners of the quilt top. Press, making sure to handle any bias edges along the sides of the quilt top gently.

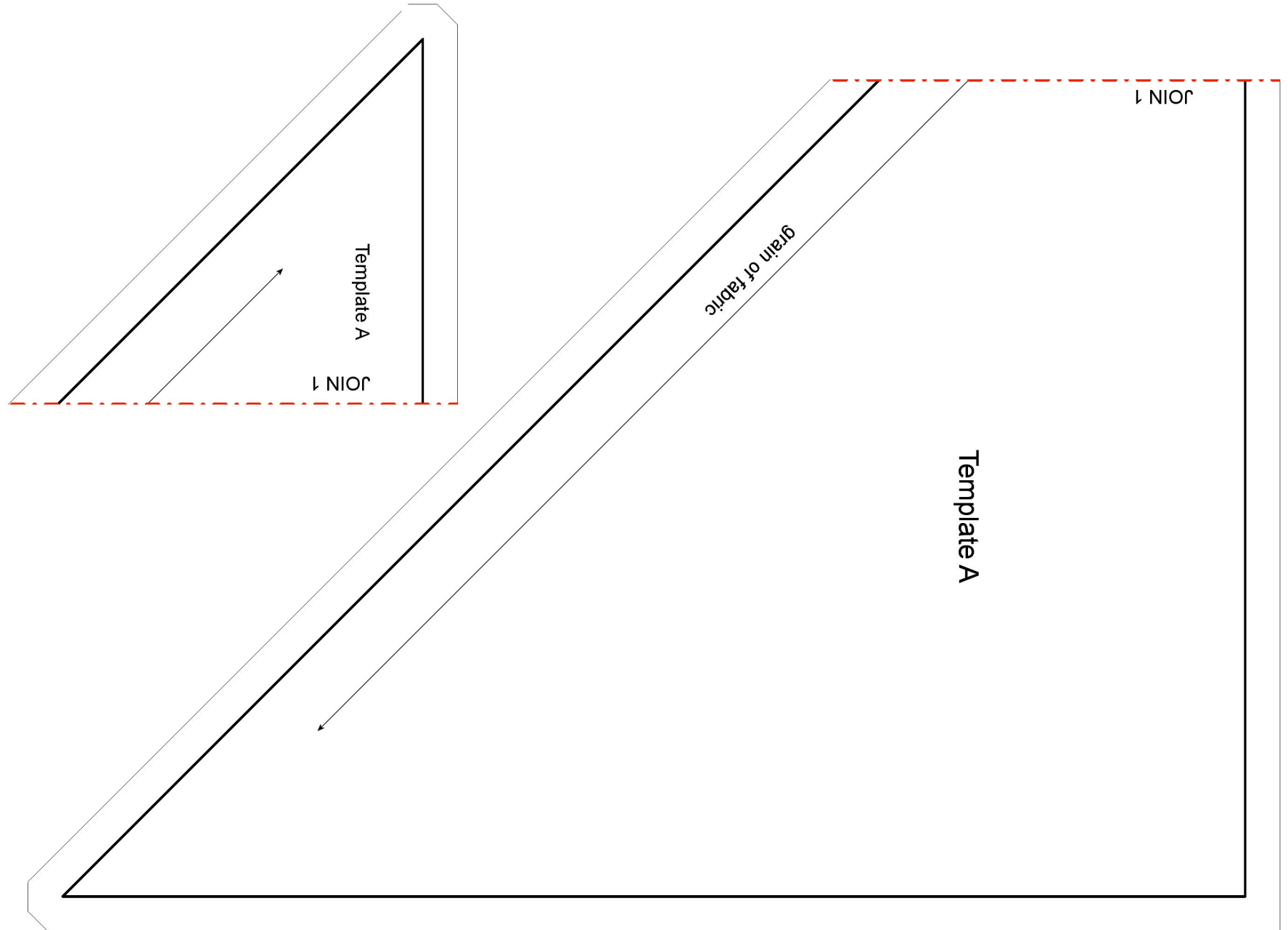


## Finishing

9. Sew together the 2½" **Fabric D** binding strips end-to-end using diagonal seams. Press seams open. Press the binding strip in half wrong sides together.
10. Layer backing (wrong side up), batting, and quilt top (right side up). Baste the layers together and quilt as desired. Trim excess batting and backing even with the top after quilting is completed.
11. Leaving an 8" tail of binding, sew the binding to the top of the quilt through all layers matching all raw edges. Miter corners. Stop approximately 12" from where you started. Lay both loose ends of binding flat along quilt edge. Where the loose ends meet, fold them back on themselves and press to form a crease. Using this crease as your stitching line, sew the two open ends of the binding right sides together. Trim seam to ¼" and press open. Finish sewing binding to quilt.
12. Turn the binding to the back of quilt and hand-stitch in place.

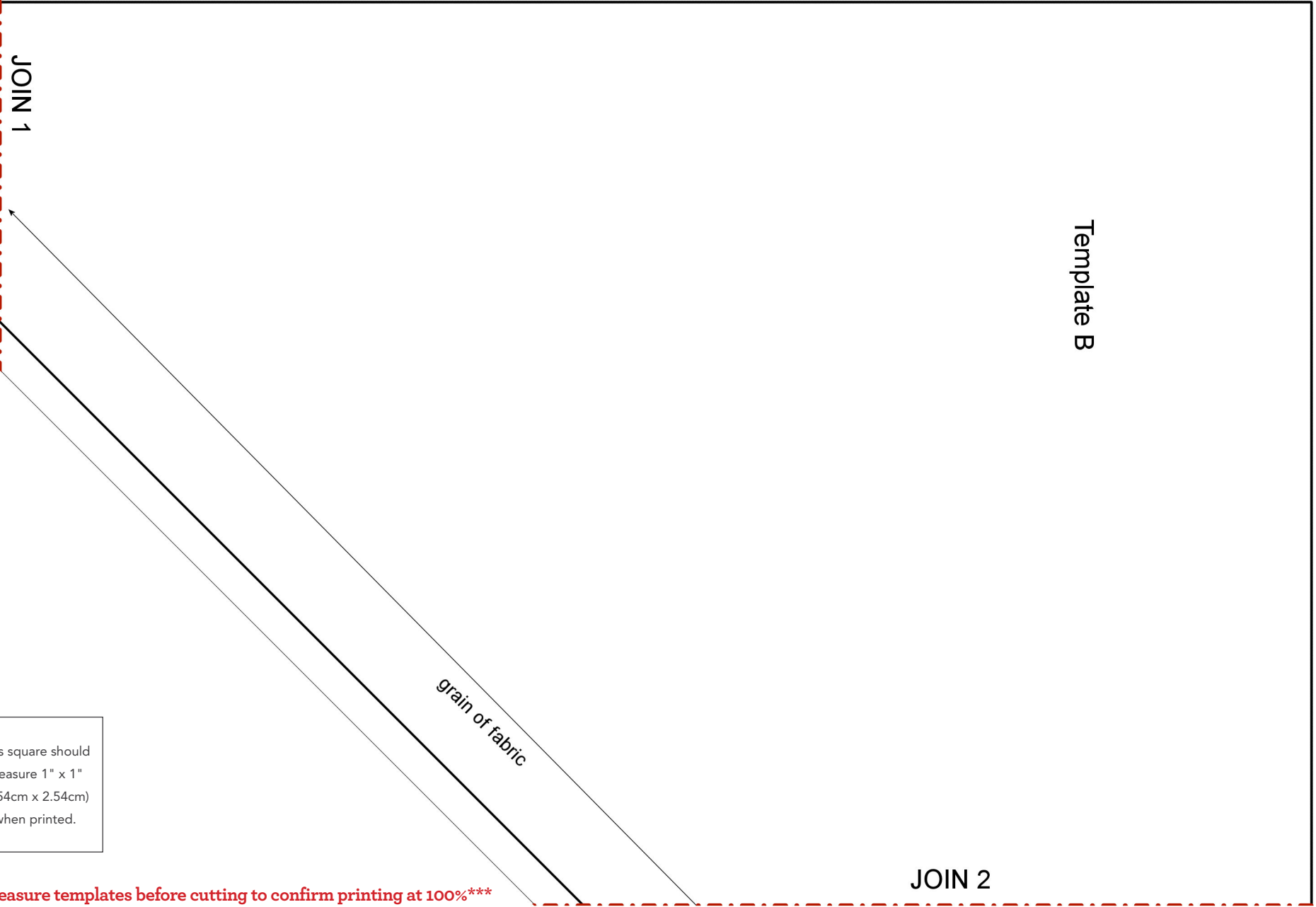
## Quilt Layout





This square should measure 1" x 1" (2.54cm x 2.54cm) when printed.

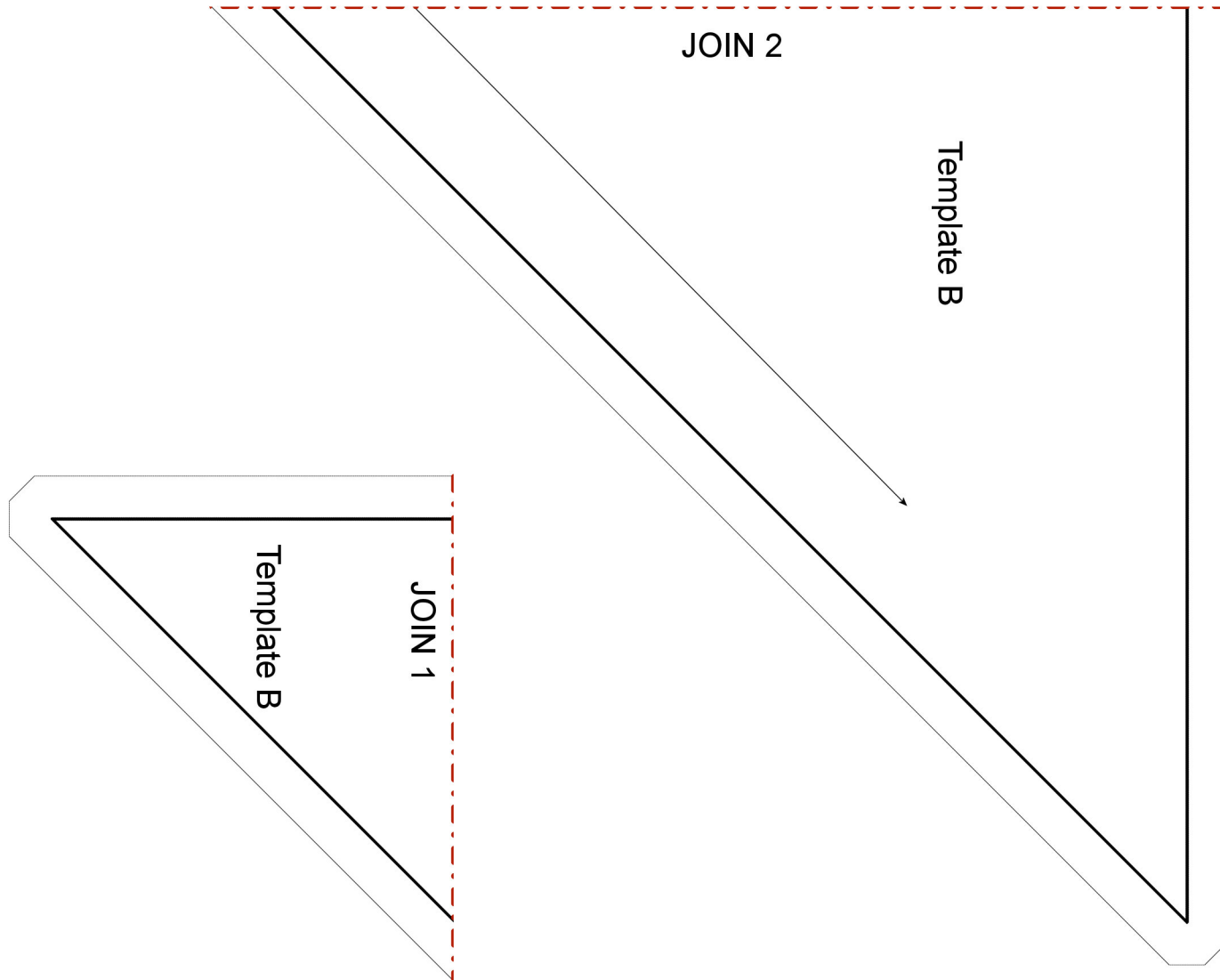
**\*\*\* Measure templates before cutting to confirm printing at 100%\*\*\***



This square should measure 1" x 1" (2.54cm x 2.54cm) when printed.

\*\*\* Measure templates before cutting to confirm printing at 100%\*\*\*





This square should measure 1" x 1" (2.54cm x 2.54cm) when printed.

**\*\*\* Measure templates before cutting to confirm printing at 100%\*\*\***