



Free Spirit

Stars Over the Forest Quilt

Featuring Woodland Blooms by Sanderson

Stars twinkle in the sky over a forest of woodland fabrics.

Collection:	Woodland Blooms by Sanderson
Technique:	Pieced
Skill Level:	Advanced Beginner
Finished Sizes:	Finished Size: 68" x 80" (172.20cm x 203.20cm) Finished Block Size: 12" x 12" (30.48cm x 30.48cm)

All possible care has been taken to assure the accuracy of this pattern. We are not responsible for printing errors or the manner in which individual work varies. Please read the instructions carefully before starting this project. If kitting, it is recommended a sample is made to confirm accuracy.

Project designed by Lucy A. Fazely | Tech edited by Alison M. Schmidt

Fabric Requirements

DESIGN	COLOR	ITEM ID	YARDAGE
(A) Dahlia & Rosehip	Russet	PWSA029.RUSSET	½ yard (0.46m)
(B) Small Dahlia & Rosehip	Forest	PWSA030.FOREST**	1¼ yards (1.14m)
(C) Wisteria & Butterfly	Linen	PWSA031.LINEN**	1¼ yards (1.14m)
(D) Squirrel & Hedgehog	Sky	PWSA033.SKY	¼ yard (0.23m)
(E) Bryndle Check	Russet	PWSA035.RUSSET	¼ yard (0.23m)
(F) Alnwick Logs	Forest	PWSA037.FOREST	1 yard (0.91m)
(G) Sycamore Weave	Saffron	PWSA041.SAFFRON	¾ yard (0.34m)
(H) Herring	Forest	PWSA042.FOREST*	1 yard (0.91m)
(I) Seaweed Dot	Navy	PWWM008.NAVYX	¼ yard (0.23m)
(J) Seaweed Dot	Red	PWWM008.REDXX	¾ yard (0.34m)
(K) Poppy	Cream	PWWM029.CREAM	1⅝ yards (1.49m)

* includes binding

**42" usable width of fabric required; otherwise, 1½ yards each

Backing (Purchased Separately)

44" (1.12m) wide

Woodland Chorus Sky PWSA028.SKY 5 yards (4.57m)

OR

108" (2.74m) wide

Strawberry Thief Linen QBWM001.LINEN 2¼ yards (2.06m)

Additional Recommendations

- 100% cotton thread in colors to match
- 76" x 88" (1.93m x 2.24m) quilt batting
- Removable fabric marker
- Template plastic or Tri-Recs rulers



(A)



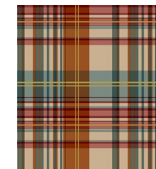
(B)



(C)



(D)



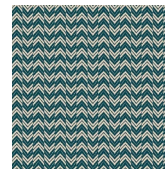
(E)



(F)



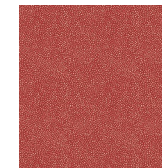
(G)



(H)



(I)



(J)



(K)



Backing
44"



Backing
108"

Prep

- To make your own templates, print the X, Y, and Z template patterns (page 7) at 100%/actual size. Trace onto template plastic, transfer all markings, and cut out on the outer line. Note that Template Z is the reverse of Template X.
- If using the Tri-Recs rulers, follow the ruler instructions to cut the Y triangles using the Tri Tool and the X and Z triangles using the Recs Tool, all on the $4\frac{1}{2}$ " lines.

Cutting

WOF = Width of Fabric

HST = Half-square triangle

QST = Quarter-square triangle

Fabric A, cut:

(3) $4\frac{1}{2}$ " x WOF

Fabric B, cut:

(3) $13\frac{1}{2}$ " x WOF; subcut
(8) $13\frac{1}{2}$ " squares

Fabric C, cut:

(3) $13\frac{1}{2}$ " x WOF; subcut
(8) $13\frac{1}{2}$ " squares

Fabric D, cut:

(1) $4\frac{1}{2}$ " x WOF; subcut
(6) $4\frac{1}{2}$ " squares

Fabric E, cut:

(1) $4\frac{1}{2}$ " x WOF; subcut
(9) $4\frac{1}{2}$ " squares

Fabric F, cut:

(8) $3\frac{1}{2}$ " x WOF for outer border

Fabric G, cut:

(7) $1\frac{1}{2}$ " x WOF for inner border

Fabric H, cut:

(2) $4\frac{1}{2}$ " x WOF
(9) $2\frac{1}{2}$ " x WOF for binding

Fabric I, cut:

(2) 3" x WOF; subcut
(24) 3" squares

Fabric J, cut:

(3) 3" x WOF; subcut
(36) 3" squares

Fabric K, cut:

(4) $4\frac{1}{2}$ " x WOF
(5) 3" x WOF; subcut
(60) 3" squares
(8) $2\frac{1}{2}$ " x WOF; subcut
(120) $2\frac{1}{2}$ " squares

Instructions

Note: Use a $\frac{1}{4}$ " seam allowance throughout. Sew all pieces with right sides together and raw edges even using matching thread. Press after each seam towards the darker fabric unless directed otherwise.

Block Construction

- On the wrong side of all **Fabric K** 3" and all **Fabric C** $13\frac{1}{2}$ " squares, draw a diagonal line from corner to corner. Draw 2 stitching lines $\frac{1}{4}$ " from either side of the first line. **Fig. 1**

Fig. 1



- Arrange a marked **Fabric K** 3" square right sides together with a **Fabric I** 3" square, aligning all edges. Stitch along the two outer lines. Cut on the center line. Open up the units and press. Centering the seam, trim each to $2\frac{1}{2}$ " square. Make a total of 48 **I/K** Small HST units. In the same manner, make 72 **J/K** Small HST units. **Fig. 2**

Fig. 2



I/K Small HST Unit
Make 48



J/K Small HST Unit
Make 72

3. Arrange a marked **Fabric C** $13\frac{1}{2}$ " square right sides together with a **Fabric B** $13\frac{1}{2}$ " square, aligning all edges. Stitch along the two outer lines. Cut on the center line. Open up the units and press, but do **not** trim or square up the units yet. Make a total of 16 **B/C** Large HST units. **Fig. 3**

Fig. 3



B/C Large HST Unit
Make 16

4. On the wrong side of 8 of the **B/C** units, draw a diagonal line perpendicular to the seam line from corner to corner. Draw 2 stitching lines $\frac{1}{4}$ " from either side of the first line. **Fig. 4**

Fig. 4



Mark 8 on the wrong side.

5. Arrange a marked **B/C** unit right sides together on an unmarked **B/C** unit, nesting seam allowances, so fabrics alternate between top and bottom units. **Fig. 5** Stitch along the two outer lines. Cut on the center line. Open up the units and press the seam allowance open. Centering the seam, trim each to $12\frac{1}{2}$ " square. Make a total of 16 QST Blocks. **Note:** Only 15 QST Blocks will be used. Extra block can be used for a matching throw pillow. **Fig. 6**

Fig. 5

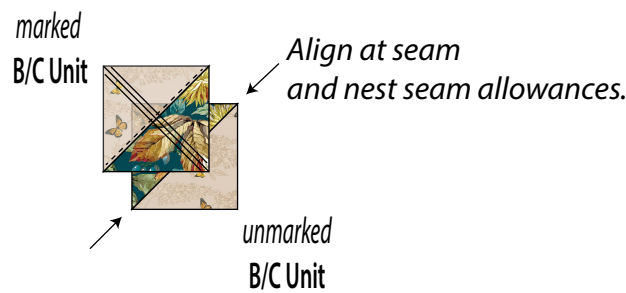


Fig. 6



6. Arrange 2 **I/K** units and 2 **Fabric K** $2\frac{1}{2}$ " squares in 2 rows as shown. Stitch into rows. Sew rows together. Make a total of 24 **I/K** 4-patch units. In the same manner, make 36 **J/K** 4-patch units with **J/K** units and **Fabric K** $2\frac{1}{2}$ " squares. **Fig. 7**

Fig. 7



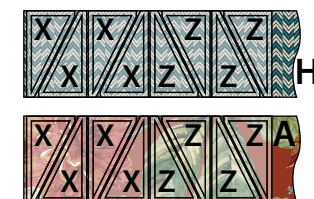
7. Cut 60 Template Y from the **Fabric K** $4\frac{1}{2}$ " strips, rotating the template for each cut. **Fig. 8**

Fig. 8



8. Cut 24 Template X and 24 Template Z from the **Fabric H** $4\frac{1}{2}$ " strips as shown. In the same manner, cut 36 Template X and 36 Template Z from the **Fabric A** $4\frac{1}{2}$ " strips. **Fig. 9**

Fig. 9



9. Stitch 1 each X and Z **Fabric H** triangles to a Y **Fabric K** triangle. Make a total of 24 blue Star Point units ($4\frac{1}{2}$ " unfinished). In the same manner, make 36 red Star Point units with **Fabric A** and **K** triangles. **Fig. 10**

Fig. 10



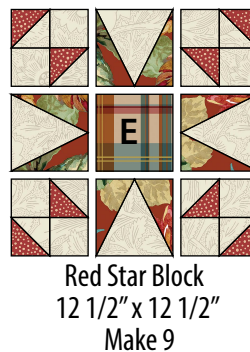
10. Arrange 1 **Fabric D** $4\frac{1}{2}$ " square, 4 blue Star Point units, and 4 I/K 4-patch units in 3 rows. Stitch into rows. Sew rows together. Make a total of 6 Blue Star Blocks ($12\frac{1}{2}$ " square unfinished). **Fig. 11**

Fig. 11



11. Arrange 1 **Fabric E** $4\frac{1}{2}$ " square, 4 red star points, and 4 J/K 4-patch units in 3 rows. Stitch into rows. Sew rows together. Make a total of 9 Red Star Blocks ($12\frac{1}{2}$ " square unfinished). **Fig. 12**

Fig. 12



Quilt Top Assembly

Note: Measure the Quilt Center width and height before cutting and adding borders and adjust border measurements if necessary to match your measurements.

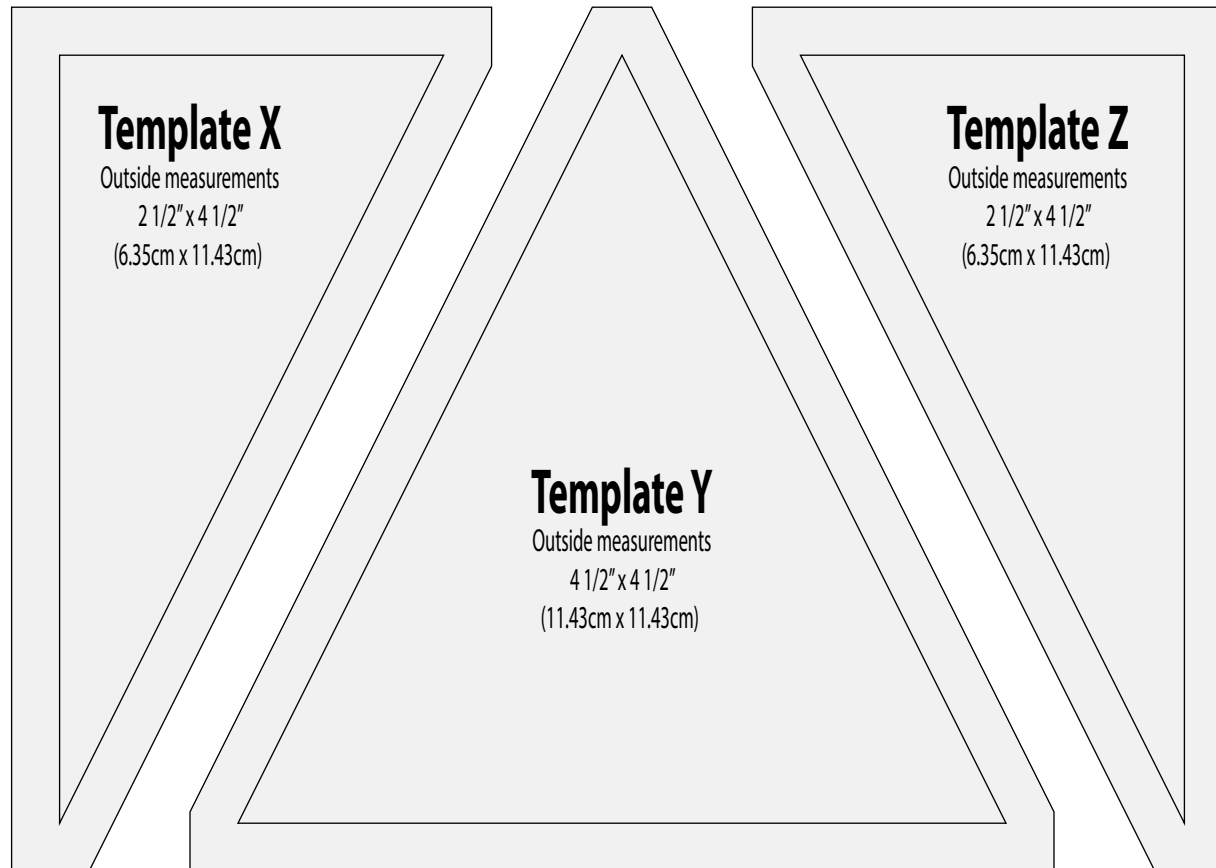
12. Noting the **Quilt Layout** diagram (page 6) for block placement and orientation, arrange the blocks into 6 rows of 5 blocks each. Sew the blocks into rows, pressing seam allowances in each row in the same direction, and alternating direction from row to row. Sew rows together, nesting seam allowances. Quilt center measures $60\frac{1}{2}$ " x $72\frac{1}{2}$ " (unfinished).
13. Sew all the **Fabric G** $1\frac{1}{2}$ " strips together end-to-end. Cut 2 side inner borders $72\frac{1}{2}$ " long. Sew a side border to right and left sides of the quilt center. Press towards the border. Cut 2 top/bottom inner borders $62\frac{1}{2}$ " long and sew to the top and bottom of the quilt center.
14. Repeat Step 13 to make and add **Fabric F** $3\frac{1}{2}$ " outer borders (sides: $74\frac{1}{2}$ " long, top/bottom: $68\frac{1}{2}$ " long) to complete the quilt top.

Finishing

15. Sew together the 2½" **Fabric H** binding strips end-to-end using diagonal seams. Press seams open. Press the binding strip in half wrong sides together.
16. Layer backing (wrong side up), batting, and quilt top (right side up). Baste the layers together and quilt as desired. Trim excess batting and backing even with the top after quilting is completed.
17. Leaving an 8" tail of binding, sew the binding to the top of the quilt through all layers matching all raw edges. Miter corners. Stop approximately 12" from where you started. Lay both loose ends of binding flat along quilt edge. Where the loose ends meet, fold them back on themselves and press to form a crease. Using this crease as your stitching line, sew the two open ends of the binding right sides together. Trim seam to ¼" and press open. Finish sewing binding to quilt.
18. Turn the binding to the back of quilt and hand-stitch in place.

Quilt Layout





This square should
measure 1" x 1"
(2.54cm x 2.54cm)
when printed.

***** Measure templates before cutting to confirm printing at 100%*****