

KAFFE  
FASSETT  
COLLECTIVE  
for

*Free Spirit*

# Paper Dolls

Featuring Kaffe Fasset Collective

**Collection:** Kaffe Fasset Collective

**Technique:** Pieced

**Skill Level:** Confident Beginner

**Finished  
Sizes:**

**Finished Project Size:**

50<sup>1</sup>/<sub>2</sub>" x 59" (1.28m x 1.50m)

**Finished Block Size:**

8<sup>1</sup>/<sub>2</sub>" x 8<sup>1</sup>/<sub>2</sub>" (21.59cm x 21.59cm)

*All possible care has been taken to assure the accuracy of this pattern. We are not responsible for printing errors or the manner in which individual work varies. Please read the instructions carefully before starting this project. If kitting, it is recommended a sample is made to confirm accuracy.*

Project designed by Brandon Mably | Tech edited by Alison M. Schmidt

## Fabric Requirements

DESIGN	COLOR	ITEM ID	YARDAGE
(A) Mad Plaid	Gold	PWBM037.GOLDX	1/8 yard (0.11m)
(B) Mad Plaid	Maroon	PWBM037.MAROO	1/8 yard (0.11m)
(C) Mad Plaid	Pastel	PWBM037.PASTE	1/8 yard (0.11m)
(D) Mad Plaid	Red	PWBM037.REDXX*	5/8 yard (0.57m)
(E) Mad Plaid	Rust	PWBM037.RUST	1/8 yard (0.11m)
(F) Jumble	Bubble Gum	PWBM053.BUBBLEGUM	5/8 yard (0.57m)
(G) Jumble	Grey	PWBM053.GREY	1/2 yard (0.46m)
(H) Jumble	Seafoam	PWBM053.SEAFOAM	1/2 yard (0.46m)
(I) Flower Dot	Contrast	PWBM077.CONTRAST	1/4 yard (0.23m)
(J) Flower Dot	Jolly	PWBM077.JOLLY	3/8 yard (0.34m)
(K) Bubble Stripe	Black	PWBM082.BLACK	3/8 yard (0.34m)
(L) Bubble Stripe	Blue	PWBM082.BLUE	3/8 yard (0.34m)
(M) Bubble Stripe	Pink	PWBM082.PINK	3/8 yard (0.34m)
(N) Comb Stripe	Blue	PWBM084.BLUE	1/2 yard (0.46m)
(O) Fronds	Yellow	PWBM085.YELLOW	1/4 yard (0.23m)
(P) Checkmate	Grey	PWBM086.GREY	3/8 yard (0.34m)
(Q) Checkmate	Pink	PWBM086.PINK	3/4 yard (0.69m)

\* includes binding

## Backing (Purchased Separately)

44" (1.12m) wide

Flower Dot	Jolly	PWBM077.JOLLY	3 1/2 yards (3.20m)
------------	-------	---------------	---------------------

## Additional Recommendations

- 100% cotton thread in colors to match
- 59" x 67" (1.50m x 1.70m) batting

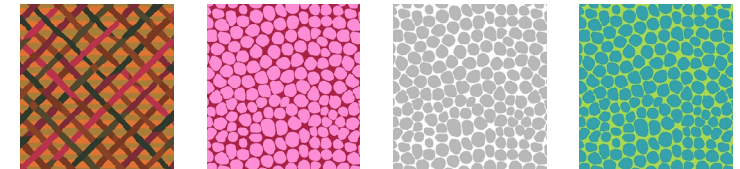


(A)

(B)

(C)

(D)

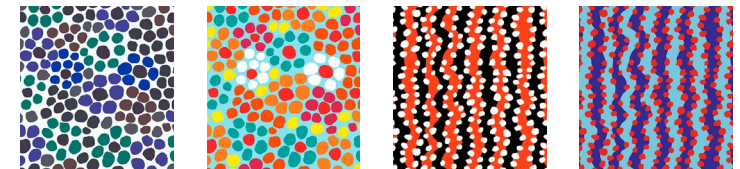


(E)

(F)

(G)

(H)

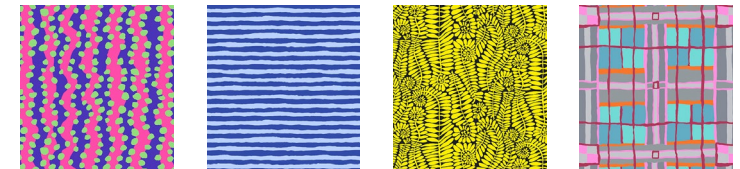


(I)

(J)

(K)

(L)

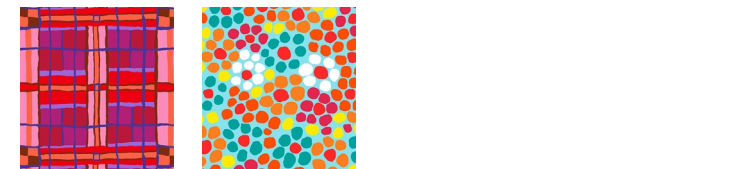


(M)

(N)

(O)

(P)



(Q)

Backing  
44"



## Cutting

### WOF = Width of Fabric

#### Fabrics A, B, and C, cut from each:

- (1) 2½" x WOF; subcut
- (5) 2" x 2½" pieces. Trim the remaining strip down to 2" high and subcut
- (5) 2" squares
- (10) 1¼" x 2" pieces

#### Fabric D, cut:

- (8) 2½" x WOF. Set aside 7 for binding.
- From the final strip, subcut
- (6) 2½" x 2" pieces. Trim the remaining strip down to 2" high and subcut
- (6) 2" squares
- (12) 1¼" x 2" pieces

#### Fabric E, cut:

- (1) 2½" x WOF; subcut
- (6) 2" x 2½" pieces. Trim the remaining strip down to 2" high and subcut
- (6) 2" squares
- (12) 1¼" x 2" pieces

#### Fabric F, cut:

- (1) 4¾" x WOF; subcut
- (3) 4¾" x 9" pieces
- (1) 4½" x WOF; subcut
- (4) 4½" squares
- (1) 4" x WOF; subcut
- (10) 4" squares
- (1) 2½" x WOF; subcut
- (10) 2½" x 4" pieces
- (1) 2" x WOF; subcut
- (10) 2" x 4" pieces

#### Fabrics G and H, cut from each:

- (3) 4" x WOF; subcut
- (12) 4" squares
- (12) 2½" x 4" pieces
- (12) 2" x 4" pieces

#### Fabric I, cut:

- (1) 4" x WOF; subcut
- (3) 4" x 9" pieces
- (1) 2" x WOF; subcut
- (3) 2" x 7½" pieces

#### Fabric J, cut:

- (1) 9" x WOF; subcut
- (5) 4" x 9" pieces
- (5) 2" x 7½" pieces

#### Fabrics K, L, and M, cut from each:

- (2) 4" x WOF; subcut
- (5) 4" x 9" pieces
- (1) 2" x WOF; subcut
- (5) 2" x 7½" pieces

#### Fabric N, cut:

- (1) 4¾" x WOF; subcut
- (3) 4¾" x 9" pieces
- (1) 4" x WOF; subcut
- (10) 4" squares
- (1) 2½" x WOF; subcut
- (10) 2½" x 4" pieces
- (1) 2" x WOF; subcut
- (10) 2" x 4" pieces

#### Fabric O, cut:

- (1) 4" x WOF; subcut
- (4) 4" x 9" pieces
- (1) 2" x WOF; subcut
- (4) 2" x 7½" pieces

#### Fabric P, cut:

- (1) 4" x WOF; subcut
- (10) 4" squares
- (1) 2½" x WOF; subcut
- (10) 2½" x 4" pieces
- (1) 2" x WOF; subcut
- (10) 2" x 4" pieces

#### Fabric Q, cut:

- (5) 4½" x WOF for border\*
- \*If you plan to join the strips with diagonal seams, cut 1 additional strip.*

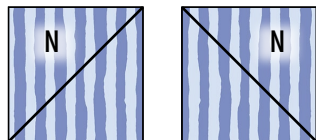
## Sewing

**Note:** Use a  $\frac{1}{4}$ " seam allowance throughout. Sew all pieces with right sides together and raw edges even using matching thread. Press after each seam, either away from the background, or press open if desired.

## Block Construction

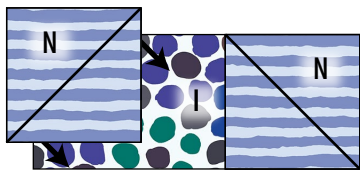
1. Draw a diagonal line on the wrong side of a **Fabric N** 4" square, with the stripes oriented as shown. Draw a diagonal line in the opposite direction on a second **Fabric N** square. **Fig. 1**

Fig. 1



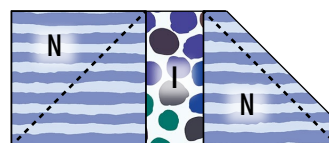
2. Arrange the marked **Fabric N** squares on opposite ends of a **Fabric I** 4" x 9" piece as shown, noting the stripe orientation and direction of the marked line. **Fig. 2**

Fig. 2



3. Stitch along marked lines. Check to make sure that both **Fabric N** squares will have the stripes oriented vertically when the unit is opened up, then trim seam allowances to  $\frac{1}{4}$ ". Press corners out to complete a dress unit. **Fig. 3**

Fig. 3



Dress Unit

4. Arrange 2 **Fabric N** 2" x 4" pieces on opposite sides of a **Fabric E** 2" square for the head unit. Arrange 2 **Fabric E** 1 $\frac{1}{4}$ " x 2" pieces on opposite sides of a **Fabric I** 2" x 7 $\frac{1}{2}$ " piece for the arms unit. Arrange 2 **Fabric N** 2 $\frac{1}{2}$ " x 4" pieces on opposite sides of a **Fabric E** 2" x 2 $\frac{1}{2}$ " piece for the feet unit. Stitch the pieces together into units. Sew units together to complete a block. **Fig. 4**

Fig. 4



Block

5. Following Steps 1—4 make 26 more blocks (27 total), referring to the **Quilt Layout** diagram (page 6) for fabric combinations for each block. *NOTE: Only the 4" squares of Fabric N need to be marked in opposite directions as shown, so that all the background stripes will be oriented vertically in the completed blocks. Other prints can be marked diagonally in any direction.*



## Quilt Top Assembly

6. Noting **Quilt Layout** diagram (page 6), arrange the blocks and 3 each **Fabric F** and **Fabric N**  $4\frac{3}{4}$ " x 9" rectangles into 6 rows. Sew the blocks and rectangles into rows. Sew rows together. Quilt center measures 43" x  $51\frac{1}{2}$ " unfinished.
7. Sew the **Fabric Q**  $4\frac{1}{2}$ " border strips together end-to-end into 1 continuous strip. Measure the quilt center and vertically and horizontally through the middle. Cut 2 side borders to fit ( $51\frac{1}{2}$ " long) and 2 top/bottom borders to fit (43" long).
8. Sew the longer border strips to the left and right sides of the quilt center. Press towards the border.
9. Sew a **Fabric F**  $4\frac{1}{2}$ " square to each end of the top/bottom border strips and sew them to the top and bottom of the quilt top. Press. Finished quilt measures 51" x  $59\frac{1}{2}$ " (including seam allowance)

## Finishing

10. Sew together the  $2\frac{1}{2}$ " **Fabric D** binding strips end-to-end using diagonal seams. Press seams open. Press the binding strip in half wrong sides together.
11. Layer backing (wrong side up), batting, and quilt top (right side up). Baste the layers together and quilt as desired. Trim excess batting and backing even with the top after quilting is completed.
12. Leaving an 8" tail of binding, sew the binding to the top of the quilt through all layers matching all raw edges. Miter corners. Stop approximately 12" from where you started. Lay both loose ends of binding flat along quilt edge. Where the loose ends meet, fold them back on themselves and press to form a crease. Using this crease as your stitching line, sew the two open ends of the binding right sides together. Trim seam to  $\frac{1}{4}$ " and press open. Finish sewing binding to quilt.
13. Turn the binding to the back of quilt and hand-stitch in place.

## Quilt Layout

