



KAFFE  
FASSETT  
COLLECTIVE  
for

Free Spirit

# Misty Squares Quilt

Featuring Reflections by Brandon Mably and  
Kaffe Fassett Collective February 2023

**Collection:** Reflections by Brandon Mably  
and Kaffe Fassett Collective  
February 2023

**Technique:** Pieced

**Skill Level:** Advanced Beginner

**Finished Size:** 62" x 64" (1.57m x 1.63m)

*All possible care has been taken to assure the accuracy of this pattern. We are not responsible for printing errors or the manner in which individual work varies. Please read the instructions carefully before starting this project. If kitting, it is recommended a sample is made to confirm accuracy.*

# Misty Squares Quilt

Project designed by Kaffe Fassett and Brandon Mably | Tech edited by Alison M. Schmidt

## Fabric Requirements

DESIGN	COLOR	ITEM ID	YARDAGE
(A) Reflections	Neutral	PWBM087.NEUTRAL	¼ yard (0.23m)
(B) Reflections	Purple	PWBM087.PURPLE	½ yard (0.46m)
(C) Reflections	Sky	PWBM087.SKY	¾ yard (0.34m)
(D) Fish Lips	Contrast	PWBM007.CONTRAST	⅝ yard (0.57m)
(E) Funky Flora	Grey	PWBM011.GREY	⅝ yard (0.57m)
(F) Spot	Noir	PWGP070.NOIRX*	⅝ yard (0.57m)
(G) Carpet Cookies	Grey	PWGP192.GREY	¼ yard (0.23m)
(H) Climbing Geraniums	Contrast	PWPJ110.CONTRAST	½ yard (0.46m)
(I) Disks	Grey	PWGP193.GREY	⅞ yard (0.80m)
(J) Shiraz	Grey	PWGP194.GREY	⅝ yard (0.57m)
(K) Lucy	Black	PWPJ112.BLACK	¾ yard (0.69m)

\* includes binding

## Backing (Purchased Separately)

**44" (1.12m) wide**

Tudor Blue PWGP195.BLUE 4 yards (3.66m)

**OR**

**108" (2.74m) wide**

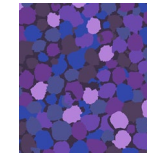
Flower Net White QBBM003.WHITE 2 yards (1.83m)

## Additional Recommendations

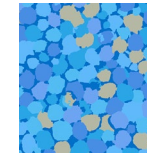
- 100% cotton thread in colors to match
- 70" x 72" (1.78m x 1.83m) batting



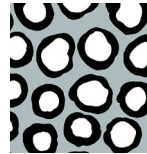
(A)



(B)



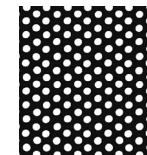
(C)



(D)



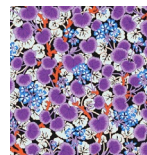
(E)



(F)



(G)



(H)



(I)



(J)



(K)



Backing  
44"



Backing  
108"

## Cutting

**WOF = Width of Fabric**

**Note:** Other than for **Fabrics A** and **E**, beginning quilters may wish to only cut the WOF strips as listed, and sew strips end-to-end when stated in the cutting instructions. Then measure the quilt after adding each border and trim the next border to be added to the size you measured (making sure to include seam allowance) if it differs from the cut size listed here.

### Fabric A, cut:

- (2) 2½" x WOF; subcut
  - (2) 2½" x 20½"
  - (2) 2½" x 18½"

### Fabric B, cut:

- (5) 2½" x WOF; sew together end-to-end and subcut
  - (2) 2½" x 48½"
  - (2) 2½" x 46½"

### Fabric C, cut:

- (4) 2½" x WOF; subcut
  - (2) 2½" x 24½"
  - (2) 2½" x 22½"

### Fabric D, cut:

- (5) 3½" x WOF; sew together end-to-end and subcut
  - (2) 3½" x 44½"
  - (2) 3½" x 40½"

### Fabric E, cut:

- (1) 16½" x WOF; subcut
  - (1) 16½" x 18½" rectangle

### Fabric F, cut:

- (7) 2½" x WOF for binding

### Fabric G, fussy cut referring to the cutting diagram below:

- (4) 4½" squares with motifs centered
- (NOTE:** The motifs will vary depending on the cut of the fabric.)

Fabric G - 4 1/2" x 4 1/2" square: Fussy cut 4



### Fabric H, cut:

- (4) 3½" x WOF; subcut
  - (2) 3½" x 30½"
  - (2) 3½" x 26½"

### Fabric I, cut:

- (6) 4½" x WOF; sew together end-to-end and subcut
  - (2) 4½" x 62½"
  - (2) 4½" x 56½"

### Fabric J, cut:

- (4) 4½" x WOF; subcut
  - (2) 4½" x 32½"
  - (2) 4½" x 30½"

### Fabric K, cut:

- (6) 3½" x WOF; sew together end-to-end and subcut
  - (2) 3½" x 54½"
  - (2) 3½" x 50½"



# Misty Squares Quilt

## Instructions

**Note:** Use a  $\frac{1}{4}$ " seam allowance throughout. Sew all pieces with right sides together and raw edges even using matching thread. Press after each seam, either to one side or open as desired.

## Quilt Top Assembly

1. Noting the **Quilt Layout** diagram (page 5), sew **Fabric A**  $2\frac{1}{2}$ " x  $18\frac{1}{2}$ " borders to long sides of the **Fabric E**  $16\frac{1}{2}$ " x  $18\frac{1}{2}$ " rectangle. Add **Fabric A**  $2\frac{1}{2}$ " x  $20\frac{1}{2}$ " borders to top and bottom.
2. Stitch **Fabric C**  $2\frac{1}{2}$ " x  $22\frac{1}{2}$ " borders to long sides of quilt. Add **Fabric C**  $2\frac{1}{2}$ " x  $24\frac{1}{2}$ " borders to top and bottom.
3. Sew **Fabric H**  $3\frac{1}{2}$ " x  $26\frac{1}{2}$ " borders to long sides of quilt. Add **Fabric H**  $3\frac{1}{2}$ " x  $30\frac{1}{2}$ " borders to top and bottom.
4. Stitch **Fabric J**  $4\frac{1}{2}$ " x  $32\frac{1}{2}$ " borders to long sides of quilt. Sew 2 **Fabric G**  $4\frac{1}{2}$ " squares to opposite ends of each **Fabric J**  $4\frac{1}{2}$ " x  $30\frac{1}{2}$ " borders. Stitch these to top and bottom of quilt.
5. Sew **Fabric D**  $3\frac{1}{2}$ " x  $40\frac{1}{2}$ " borders to long sides of quilt. Add **Fabric D**  $3\frac{1}{2}$ " x  $44\frac{1}{2}$ " borders to top and bottom.
6. Stitch **Fabric B**  $2\frac{1}{2}$ " x  $46\frac{1}{2}$ " borders to long sides of quilt. Add **Fabric B**  $2\frac{1}{2}$ " x  $48\frac{1}{2}$ " borders to top and bottom.
7. Sew **Fabric K**  $3\frac{1}{2}$ " x  $50\frac{1}{2}$ " borders to long sides of quilt. Add **Fabric K**  $3\frac{1}{2}$ " x  $54\frac{1}{2}$ " borders to top and bottom.
8. Stitch **Fabric I**  $4\frac{1}{2}$ " x  $56\frac{1}{2}$ " borders to long sides of quilt. Add **Fabric I**  $4\frac{1}{2}$ " x  $62\frac{1}{2}$ " borders to top and bottom to complete the quilt top.

## Finishing

9. Sew together the  $2\frac{1}{2}$ " **Fabric F** binding strips end-to-end using diagonal seams. Press seams open. Press the binding strip in half wrong sides together.
10. Layer backing (wrong side up), batting, and quilt top (right side up). Baste the layers together and quilt as desired. Trim excess batting and backing even with the top after quilting is completed.
11. Leaving an 8" tail of binding, sew the binding to the top of the quilt through all layers matching all raw edges. Miter corners. Stop approximately 12" from where you started. Lay both loose ends of binding flat along quilt edge. Where the loose ends meet, fold them back on themselves and press to form a crease. Using this crease as your stitching line, sew the two open ends of the binding right sides together. Trim seam to  $\frac{1}{4}$ " and press open. Finish sewing binding to quilt.
12. Turn the binding to the back of quilt and hand-stitch in place.

## Quilt Layout

