



Free Spirit

Lakeside Quilt

Featuring Birds of a Feather by Rachel Hauer

Collection:	Birds of a Feather by Rachel Hauer
Technique:	Pieced
Skill Level:	Confident Beginner
Finished Size:	60" x 72" (1.52m x 1.83m)

All possible care has been taken to assure the accuracy of this pattern. We are not responsible for printing errors or the manner in which individual work varies. Please read the instructions carefully before starting this project. If kitting, it is recommended a sample is made to confirm accuracy.

Project designed by Stacey Day | Tech edited by Alison M. Schmidt

Fabric Requirements

DESIGN	COLOR	ITEM ID	YARDAGE
(A) Berry Gifted	Vermillion	PWRH041.VERMILLION	$\frac{3}{4}$ yard (0.69m)
(B) Bird Stack	Saffron	PWRH042.SAFFRON*	$\frac{5}{8}$ yard (0.57m)
(C) Loons	Oasis	PWRH051.OASIS	1 $\frac{1}{8}$ yards (1.03m)
(D) Nest Dot	Plum	PWRH052.PLUM	$\frac{1}{2}$ yard (0.46m)
(E) Swan Lake	Oasis	PWRH053.OASIS	1 $\frac{1}{8}$ yards (1.03m)
(F) Wycinanki	Plum	PWRH054.PLUM	1 $\frac{1}{4}$ yards (1.14m)
(G) Bird Prints	Oasis	PWRH056.OASIS	$\frac{3}{4}$ yard (0.69m)
(H) Designer Essential Solids	Bark	CSFSESS.BARK	$\frac{1}{2}$ yard (0.46m)

* includes binding

Backing (Purchased Separately)

44" (1.12m) wide

Honeysuckle

Plum

PWRH044.PLUM

4 $\frac{1}{4}$ yards (3.89m)

OR

108" (2.74m) wide

2 yards (1.83m)

Additional Recommendations

- 100% cotton thread in colors to match
- 68" x 80" (1.73m x 2.03m) batting



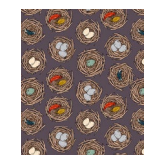
(A)



(B)



(C)



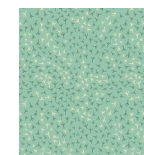
(D)



(E)



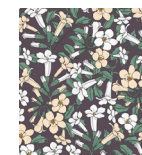
(F)



(G)



(H)



Backing
44"

Cutting

WOF = Width of Fabric, cut from selvage to selvage

From Fabrics A and G, cut from each:

- (8) $2\frac{1}{2}$ " x WOF; subcut
- (49) $2\frac{1}{2}$ " x $4\frac{1}{2}$ "
- (22) $2\frac{1}{2}$ " x $2\frac{1}{2}$ "

From Fabric B, cut:

- (8) $2\frac{1}{2}$ " x WOF for binding

From Fabrics C and E, cut from each:

- (4) $8\frac{1}{2}$ " x WOF; subcut
- (15) $8\frac{1}{2}$ " x $8\frac{1}{2}$ "

From Fabric F, cut:

- (7) $4\frac{1}{2}$ " x WOF; subcut
- (49) $4\frac{1}{2}$ " x $4\frac{1}{2}$ "
- (3) $2\frac{1}{2}$ " x WOF; subcut
- (22) $2\frac{1}{2}$ " x $4\frac{1}{2}$ "

From Fabrics D and H, cut from each:

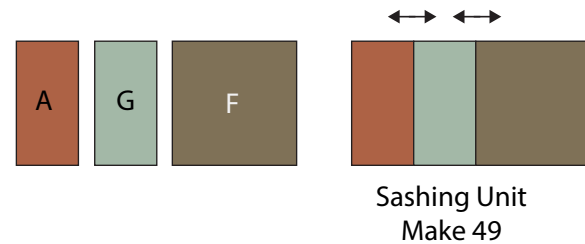
- (2) $4\frac{1}{2}$ " x WOF; subcut
- (10) $4\frac{1}{2}$ " x $4\frac{1}{2}$ "
- (2) $2\frac{1}{2}$ " x WOF; subcut
- (9) $2\frac{1}{2}$ " x $4\frac{1}{2}$ "
- (2) $2\frac{1}{2}$ " x $2\frac{1}{2}$ "

Instructions

All seam allowances are $\frac{1}{4}$ " and pieces are sewn right sides together. Press seam allowances open unless otherwise stated.

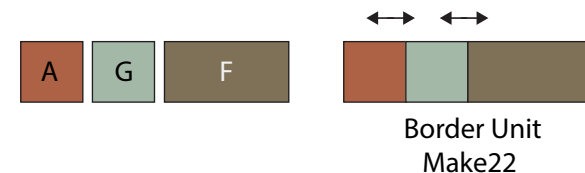
1. Sew together 1 each **Fabric A** and **Fabric G** $2\frac{1}{2}$ " x $4\frac{1}{2}$ " rectangles and 1 **Fabric F** $4\frac{1}{2}$ " x $4\frac{1}{2}$ " square as shown to make a Sashing Unit. Repeat to make a total of 49.

Fig. 1



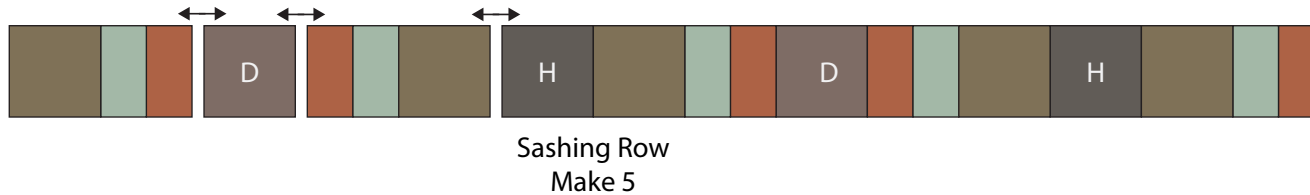
2. Sew together 1 each **Fabric A** and **Fabric G** $2\frac{1}{2}$ " squares and 1 **Fabric F** $4\frac{1}{2}$ " x $2\frac{1}{2}$ " rectangle to make a Border Unit. Repeat to make a total of 22.

Fig. 2



3. Arrange 2 each **Fabric H** and **Fabric D** $4\frac{1}{2}$ " squares with 5 Sashing Units as shown. Sew together to make a Sashing Row. Repeat to make a total of 5.

Fig. 3



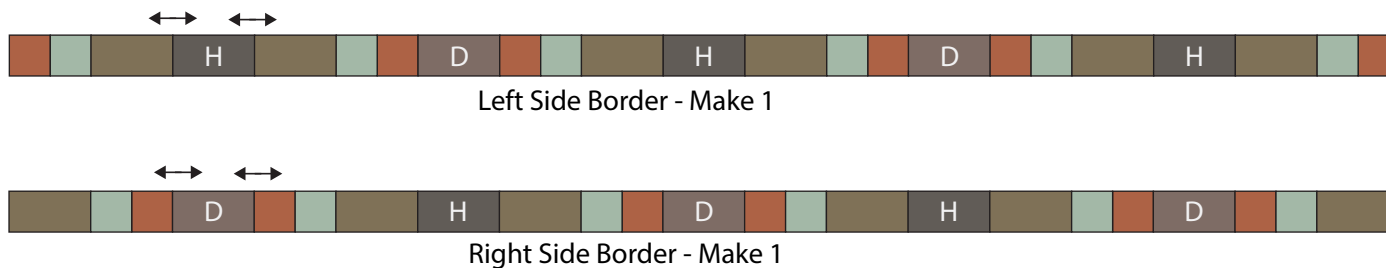
4. Arrange 5 Border Units, 2 each **Fabric H** and **Fabric D** $4\frac{1}{2}$ " x $2\frac{1}{2}$ " rectangles, and 1 each **Fabric H** and **Fabric D** $2\frac{1}{2}$ " squares as shown. Sew together to make a top border. Repeat to make a bottom border.

Fig. 4



5. Arrange 6 Border Units, 3 **Fabric H** and 2 **Fabric D** $2\frac{1}{2}$ " x $4\frac{1}{2}$ " rectangles, and 2 **Fabric D** $2\frac{1}{2}$ " squares as shown. Sew together to make the Left Side Border.
6. Arrange 6 Border Units, 3 **Fabric D** and 2 **Fabric H** $2\frac{1}{2}$ " x $4\frac{1}{2}$ " rectangles, and 2 **Fabric H** $2\frac{1}{2}$ " squares as shown. Sew together to make the Right Side Border.

Fig. 5



Quilt Top Assembly

7. Refer to the **Quilt Layout Diagram** (page 6) for placement and orientation, arrange 3 **Fabric C** and 2 **Fabric E** 8½" squares and 4 Sashing Units into a block row, rotating every other sashing unit and making sure all the **Fabric C** and **E** squares have the bird prints correctly oriented. Sew the squares and sashing units together to make a Block Row 1. Repeat to make 3 of Row 1.
8. Again referring to the **Quilt Layout Diagram** for placement and orientation, arrange 3 **Fabric E** and 2 **Fabric C** 8½" squares and 4 Sashing Units into a block row, rotating every other sashing unit and making sure all the **Fabric C** and **E** squares have the bird prints correctly oriented. Sew the squares and sashing units together to make a Block Row 2. Repeat to make 3 of Row 2.
9. Sew a Sashing Row to the bottom of every Row 1, pinning at the seam intersections to match them. Sew a Sashing Row, rotated 180° so the rectangles are at the left-hand side, to the bottom of 2 Row 2's. Then sew all the rows together to complete the quilt center.
10. Sew the Left and Right Side Borders to the left and right sides of the quilt center, pinning at the seam intersections. Press. Then add the Top and Bottom Borders to complete the quilt top.

Finishing

11. Sew together the 2½" **Fabric B** binding strips end-to-end using diagonal seams. Press seams open. Press the binding strip in half wrong sides together.
12. Layer backing (wrong side up), batting, and quilt top (right side up). Baste the layers together and quilt as desired. Trim excess batting and backing even with the top after quilting is completed.
13. Leaving an 8" tail of binding, sew the binding to the top of the quilt through all layers matching all raw edges. Miter corners. Stop approximately 12" from where you started. Lay both loose ends of binding flat along the quilt edge. Where the loose ends meet, fold them back on themselves and press to form a crease. Using this crease as your stitching line, sew the two open ends of the binding right sides together. Trim seam to ¼" and press open. Finish sewing binding to quilt.
14. Turn the binding to the back of the quilt and hand-stitch in place.

Quilt Layout

