



Free Spirit

Fractured Flowers Quilt

Featuring *Happy Blooms* by Sue Penn

No matter how you cut this dramatic focal fabric, every piece evokes a garden in high summer bursting with colorful blooms.

Collection: Happy Blooms by Sue Penn

Technique: Pieced

Skill Level: Advanced Beginner

Finished Size of Project:
51¹/₄" x 51¹/₄" (1.30m x 1.30m)
Finished Block Size:
16" x 16" (40.64cm x 40.64cm)

All possible care has been taken to assure the accuracy of this pattern. We are not responsible for printing errors or the manner in which individual work varies. Please read the instructions carefully before starting this project. If kitting, it is recommended a sample is made to confirm accuracy.

Project designed by Sue Penn | Tech edited by Kathryn Patterson

Fabric Requirements

DESIGN	COLOR	ITEM ID	YARDAGE
(A) Mixed Media	MULTI	PWSP047.MULTI	¼ yard (0.23m)
(B) Blooms	MULTI	PWSP048.MULTI	1¼ yards (1.14m)
(C) Stardust	CYAN	PWSP049.CYAN	7⁄8 yard (0.80m)
(D) Spotty	CRIMSON	PWSP050.CRIMSON	3⁄8 yard (0.34m)
(E) Carnival	MULTI	PWSP055.MULTI	5⁄8 yard (0.57m)
(F) Droplets	ROYAL	PWSP053.ROYAL*	½ yard (0.46m)

* binding

Backing (Purchased Separately)

44" (1.12m) wide

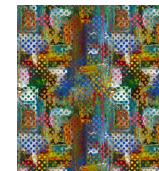
Pinwheels Multi PWSP054.MULTI 3¾ yards (3.09m)

OR

108" (2.74m) wide 1¾ yards (1.60m)

Additional Recommendations

- 100% cotton thread in colors to match
- Batting Size 60" x 60" (1.52m x 1.52m)



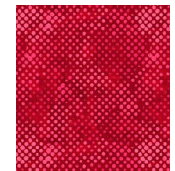
(A)



(B)



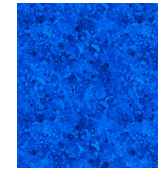
(C)



(D)



(E)



(F)



Backing
44"

Cutting

Fabric A, cut:

- (6) 6½" (16.51cm) squares; subcut each once diagonally into
- (2) 6½" (16.51cm) triangles (12 total)

Fabric B, cut:

- (1) 23⅞" (60.64cm) square; subcut twice diagonally into
- (4) 16⅞" (42.86cm) setting triangles
- (1) 16½" (41.91cm) square
- (2) 12¼" (31.12cm) squares; subcut each once diagonally into
- (2) 12¼" (31.12cm) corner triangles (4 total)

Fabric C, cut:

- (1) 17¼" (43.82cm) square; subcut twice diagonally into
- (4) 17¼" (43.82cm) triangles
- (6) 9¼" (23.50cm) squares; subcut each twice diagonally into
- (4) 9¼" (23.50cm) triangles (24 total)

Fabric D, cut:

- (6) 6½" (16.51cm) squares; subcut each once diagonally into
- (2) 6½" (16.51cm) triangles (12 total)
- (4) 3½" (8.89cm) squares

Fabric E, cut:

- (5) 3½" (8.89cm) x WOF strips for border

Fabric F, cut:

- (6) 2½" (6.35cm) x WOF strips for binding

Sewing

Notes:

- All seam allowances are ¼" (.64cm) and pieces are sewn right sides together.
- Triangles have bias edges. Handle pieces and blocks with care while sewing and pressing to avoid stretching or distorting the fabric.

Block Assembly

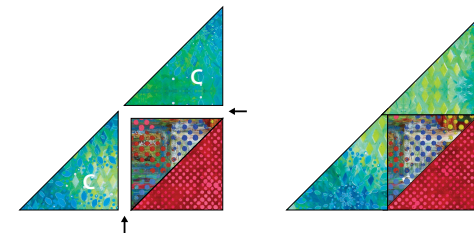
1. Sew 6½" (16.51cm) **Fabric A** triangles and 6½" **Fabric D** triangles in **A/D** pairs along the long edge to make (12) 6⅞" (15.56cm) square HSTs. Press seams open and trim dog ears. (**Fig. 1**)

Fig. 1



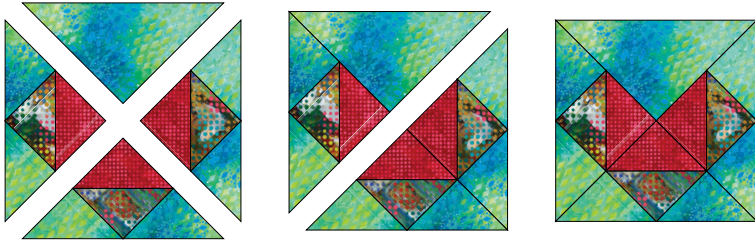
2. Sew (1) 9¼" (23.50cm) **Fabric C** triangle to each **Fabric A** edge of the HST unit. Align edges where indicated by the arrow; the points of each triangle will extend slightly past the opposite edge of the square. Make 12 triangle units. (**Fig. 2**)

Fig. 2



3. Arrange (3) **Fabric A/C/D** triangle units and (1) $17\frac{1}{4}$ " (43.82cm) **Fabric C** triangle to form a square. Make (4) $16\frac{1}{2}$ " (41.91cm) blocks. (**Fig. 3**)

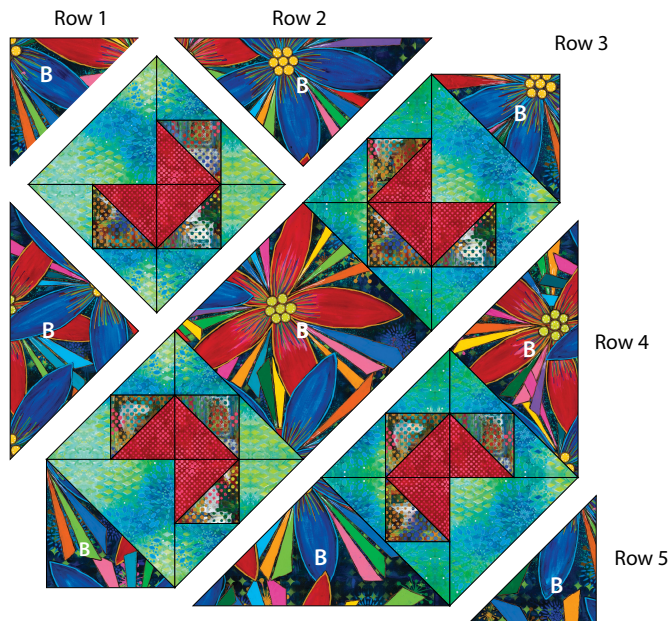
Fig. 3



Quilt Top Assembly

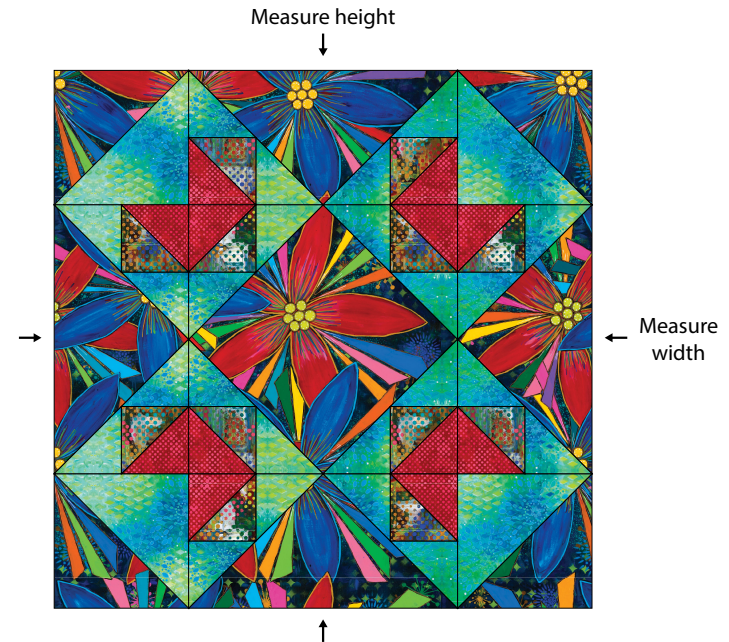
4. Arrange blocks and all **Fabric B** pieces into (5) rows. Sew into rows, then sew rows together to complete the quilt center. (**Fig. 4**)

Fig. 4



5. Measure your quilt top through the center from side to side and from top to bottom. The center measures $45\frac{3}{4}$ " (1.16m) square; if your width or height is slightly different, make a note of your dimensions. (**Fig. 5**)

Fig. 5



6. Sew all (5) $3\frac{1}{2}$ " (8.89cm) **Fabric E** strips together end to end. Cut (2) side borders and (2) top/bottom borders according to your measurements.
7. Referring to the **Quilt Layout** diagram (page 5), sew side borders to the left and right sides of the quilt center.
8. Sew (1) $3\frac{1}{2}$ " (8.89cm) **Fabric D** square to each end of the top and bottom border strips.
9. Sew top and bottom borders to the quilt to complete the $51\frac{3}{4}$ " (1.31m) square quilt top.

Finishing

10. Sew together the (6) **Fabric F** binding strips end to end using diagonal seams. Press the seams open. Press the binding strip in half wrong sides together.
11. Layer the backing (wrong side up), batting, and quilt top (right side up). Baste the layers together and quilt as desired. Trim excess batting and backing even with the top after quilting is completed.
12. Leaving an 8" (20.32cm) tail of binding, sew binding to top of quilt through all layers matching all raw edges. Miter corners. Stop approximately 12" (30.48cm) from where you started. Lay both loose ends of binding flat along quilt edge. Where these two loose ends meet, fold them back on themselves and press to form a crease. Using this crease as your stitching line, sew the two open ends of the binding right sides together. Trim seam to 1/4" (.64cm) and press open. Finish sewing binding to quilt.
13. Turn the binding to the back of the quilt and hand or machine stitch in place.

Quilt Layout

