

Dear Stella fabrics are available online and in sewing and quilting shops worldwide. Ask for it at your local quilt shop!



Finished quilt size: 47¹/₄" x 59"

Time for Bed

quilt pattern

DESIGNED BY STACEY DAY
staceyinstitches.wordpress.com
Featured fabrics: Koala Me Crazy

Snuggle and snooze. The timeworn Tumbling Block is super-sized, easy to sew, and extra adorable in our *Koala Me Crazy* collection of soothing, sleepy-time prints.






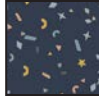






This pattern is owned and licensed by Dear Stella for personal use only and should not be reproduced for sale to any third party.

www.dearstelladesign.com

TIME FOR BED QUILT PATTERN

Note: Cut all patches from a single layer of fabric placed right side up, with templates facing right side up.

Materials and Cutting		
Fabric	Yardage	Cutting
 Stardust Stella-D1945 White	7/8 yard	Cut: 5 Template 1 Diamonds 2 Template 2 Side Triangles 2 Template 5 Lower Triangles
 Jax Stella- 1560 Plume	3/4 yard	Cut: 6 Template 1 Diamonds 1 Template 4 Upper Triangle
 Shooting Stars Stella-D1944 Midnight	3/4 yard	Cut: 6 Template 1 Diamonds 1 Template 3 Upper Triangle
 Nap Time Stella-D1947 Hydro	3/4 yard	Cut: 6 Template 1 Diamonds 2 Template 4 Upper Triangles
 Star Spangle Stella-D1942 White	5/8 yard	Cut: 2 1/4"-wide bias strips to make 227" of bias binding.
 Stardust Stella-D1945 Midnight	1/2 yard	Cut: 3 Template 1 Diamonds 2 Template 3 Upper Triangles
 Over the Rainbow Stella-D1946 White	1/2 yard	Cut: 3 Template 1 Diamonds 1 Template 5 Lower Triangle
 Koala Me Crazy Stella-D1941 White	1/2 yard	Cut: 2 Template 1 Diamonds 2 Template 2 Side Triangles
 Night Sky Stella-D1943 Midnight	1/2 yard	Cut: 3 Template 1 Diamonds
 Jax Stella-1560 Misty	3 yards	Remove selvages. Cut: 1 strip, 36" x width of fabric (WOF). Sub-cut 2 sections, approximately 36" x 20".
Other		
Batting	55" x 67"	
Template plastic, optional		



This pattern is owned and licensed by Dear Stella for personal use only and should not be reproduced for sale to any third party.

TIME FOR BED QUILT PATTERN

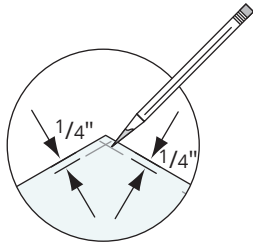
Preparation

Print template pages x-x. Measure the test squares to make sure the template pages print at actual size. Trim and tape the pages together along dashed lines. If using template plastic, trace templates onto template plastic. Cut the individual templates out along the solid outer lines. Note that the template corners are indicated as grey dots.

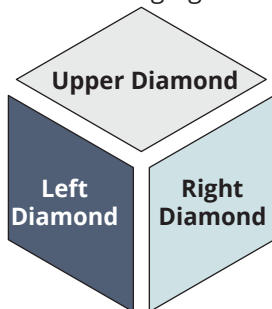
Note: All seam allowances are $\frac{1}{4}$ " unless otherwise specified. Press seam allowances open unless otherwise indicated.

Make the Tumbling Blocks

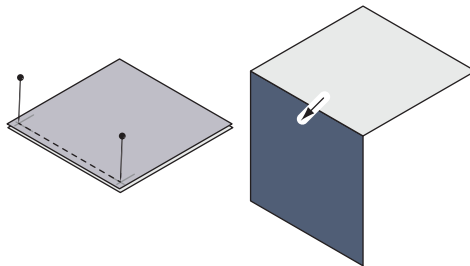
1 Use a rotary ruler and erasable marking tool to mark a $\frac{1}{4}$ " corner seam allowance on the wrong side of each diamond and triangle patch. The marked lines will form an "x" in the corners of each patch, indicating where the seam lines should start and stop.



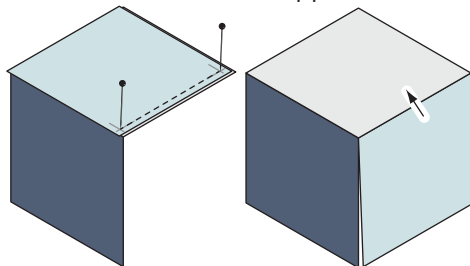
2 Referring to the quilt image for fabric placement, select three Template 3 Diamonds. Arrange the diamonds as they will appear in the finished quilt, with the fabrics facing right side up.



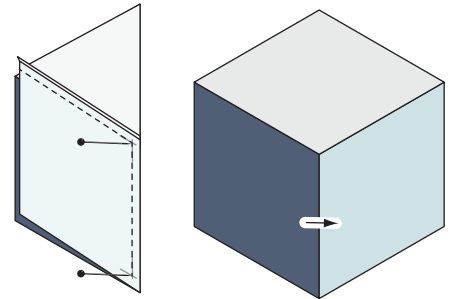
3 Place the lower left diamond right sides together with the upper diamond along the adjacent edge. Use a pin to align each of the 'x' marked corners and pin the two diamonds together. Sew the diamonds together, backstitching at each 'x'. *Do not sew into the seam allowance.* Press the seam allowances toward the lower left diamond.



4 Repeat step 3 to join the lower right diamond to the adjacent edge of the upper diamond, using a pin to align the 'x' marked corners, and backstitching at each start and stop. *Do not sew into the seam allowance.* Press the seam allowances toward the upper diamond.



5 Fold the upper diamond in half, right sides together, aligning the seam lines and outer edges of the lower diamonds. Use pins to align each of the 'x' marked inner corners of the lower diamonds and pin the two diamonds together. Sew the two lower diamonds together along the adjacent edges, backstitching at each 'x', and taking care to *not sew into the seam allowances.* Press the seam allowances toward the right diamond. Make a total of 10 Tumbling Blocks.



Tumbling Block
Make 10.

TIP: It's a 'Y-seam'!

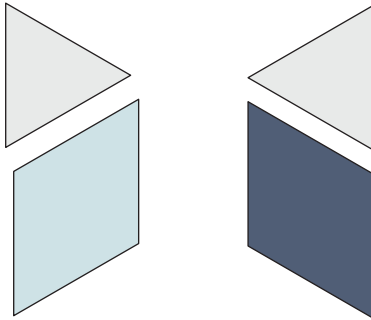
What's the secret to sewing a pucker-free intersection when three patches meet at one point? Simply don't sew into the seam allowance! Mark your $\frac{1}{4}$ " seam allowances and take extra care to start and stop your stitching at those marked points.



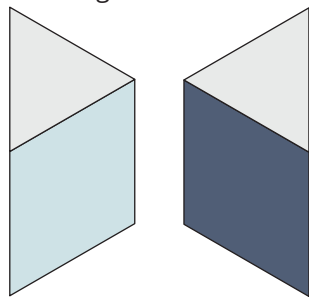
TIME FOR BED QUILT PATTERN

Make the Half Blocks

1 Referring to the quilt image for fabric placement, select one Template 1 Diamond and one Template 2 Triangle. Arrange the diamond and triangle as they will appear in the finished quilt, with fabrics facing right side up.



2 Place the diamond and triangle right sides together, using a pin to align each of the "x" marked corners along the adjacent edges. Pin, then sew the diamonds together, backstitching at each 'x'. *Do not sew into the seam allowance.* Make two each left side and right side Half Blocks. Press the seam allowances toward the triangle for left side Half Blocks, and toward the diamond for right side Half Blocks.



Half Block
Make 2 of each.

Assemble the Quilt

1 Referring to the quilt photo for block and fabric placement, arrange the Tumbling Blocks and Half Blocks in four horizontal rows. Sew the blocks and half blocks in each row together along adjacent edges, backstitching at the start and stop of each seam. *Do not sew into the seam allowances.* Press.

2 Sew the rows together along adjacent angled edges, backstitching at the start and stop of each seam. *Do not sew into the seam allowances.* Press.

3 Referring to the quilt photo for placement, arrange three each of Template 3 and Template 4 triangles in a single row at the upper edge of the quilt top. Sew the long angled edge of each triangle to the upper angled edges of the quilt top, matching the 'x' marked corners, and backstitching at each start and stop. *Do not sew into the seam allowance.* Press. With right sides together, align the short ends of the Template 3 and 4 triangles, matching the 'x' marked corners, and backstitching at each start and stop. *Do not sew into the seam allowance.* Press.

4 Referring to the quilt photo for fabric placement, arrange three Template 5 triangles along the bottom of the quilt top. Sew one short edge of the Template 5 triangles to the adjacent edge of the adjacent diamond, aligning edges and using a pin to align each of the 'x' marked corners. Pin, then sew the diamonds and triangles together. Repeat to sew the remaining short side of the triangles to the quilt top. *Do not sew into the seam allowances.* Press

Finishing

1 Using a 1/2" seam allowance, join the two 36" x 20" backing rectangles along one short edge. Press. Join the rectangles to the remaining backing yardage along one long edge to complete the quilt backing. Press.

2 Layer the quilt backing, batting, and quilt top. Quilt as desired. Stitch a scant 1/4" from the edge around the perimeter of the quilt. Trim the excess backing and batting. Use your favorite method to bind the quilt.

#dearstella

Follow [dearstellafab](#) on Instagram
and see what's new!



This pattern is owned and licensed by Dear Stella for personal use only and should not be reproduced for sale to any third party.

www.dearstelladesign.com

PAGE 4 OF 10

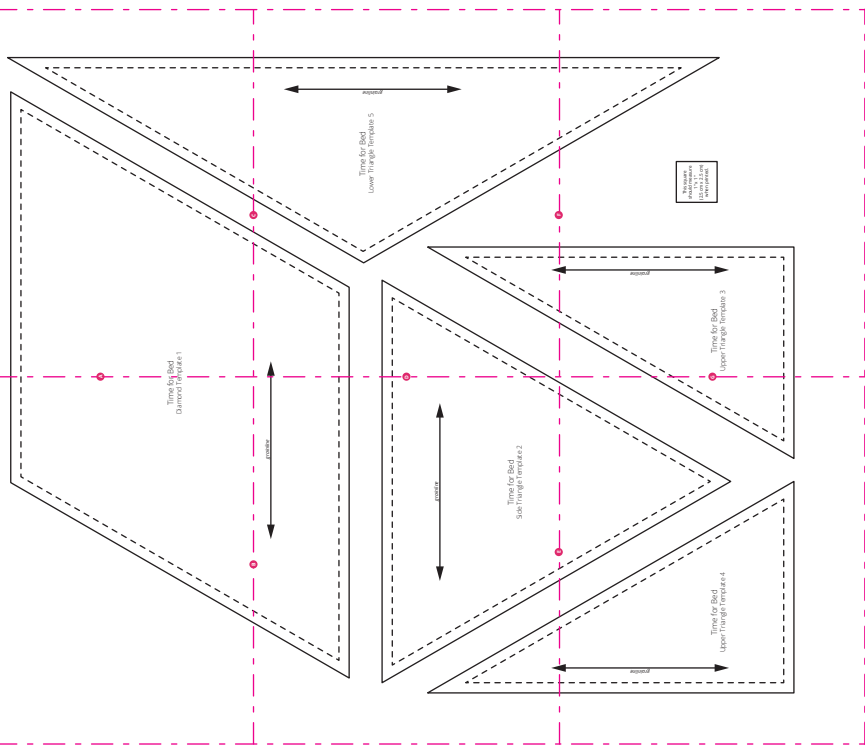
TIME FOR BED QUILT PATTERN

A

Time for
Diamond Te

B

PATTERN KEY

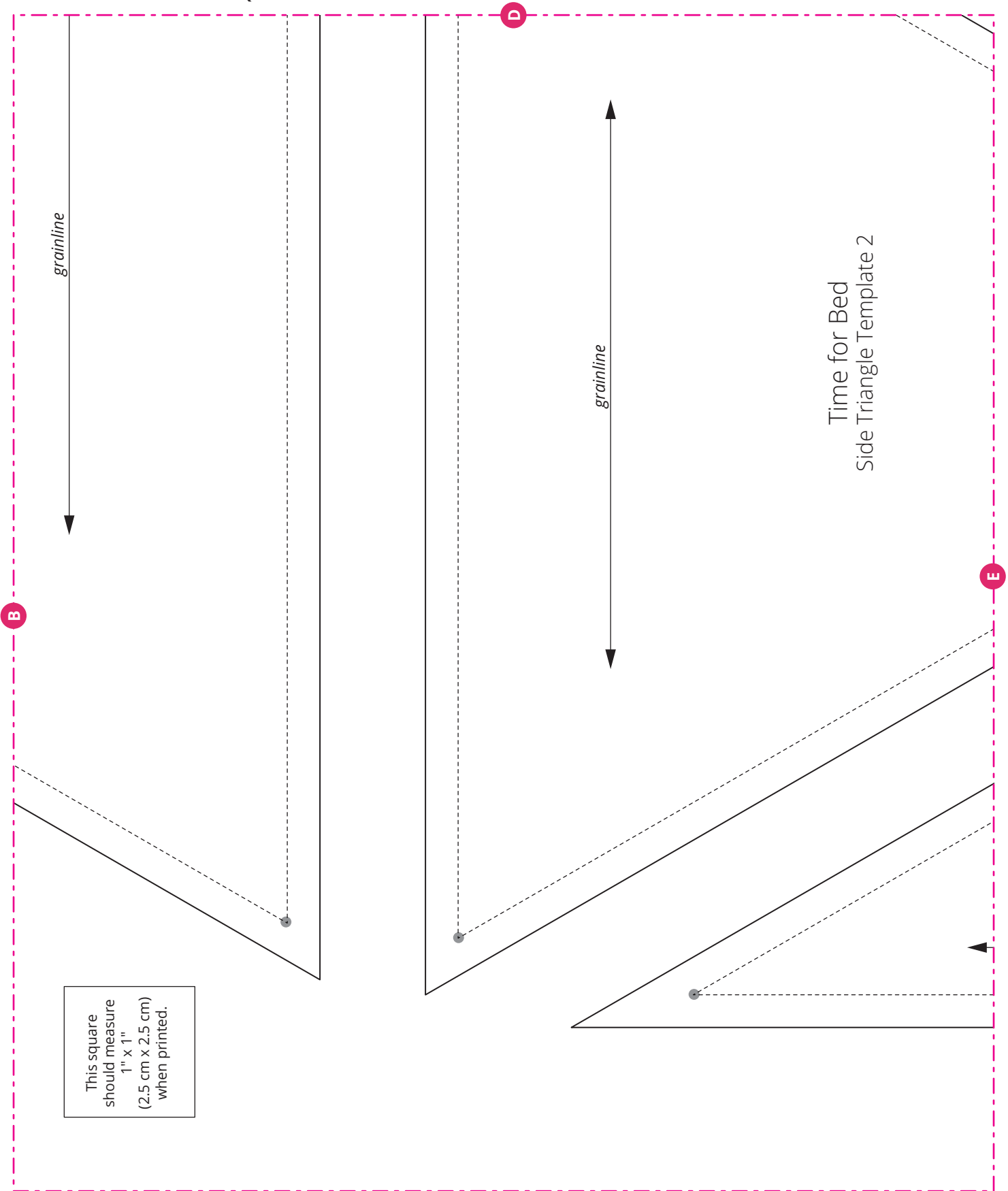


This square should measure 1" x 1" (2.5 cm x 2.5 cm) when printed.



This pattern is owned and licensed by Dear Stella for personal use only and should not be reproduced for sale to any third party.

TIME FOR BED QUILT PATTERN

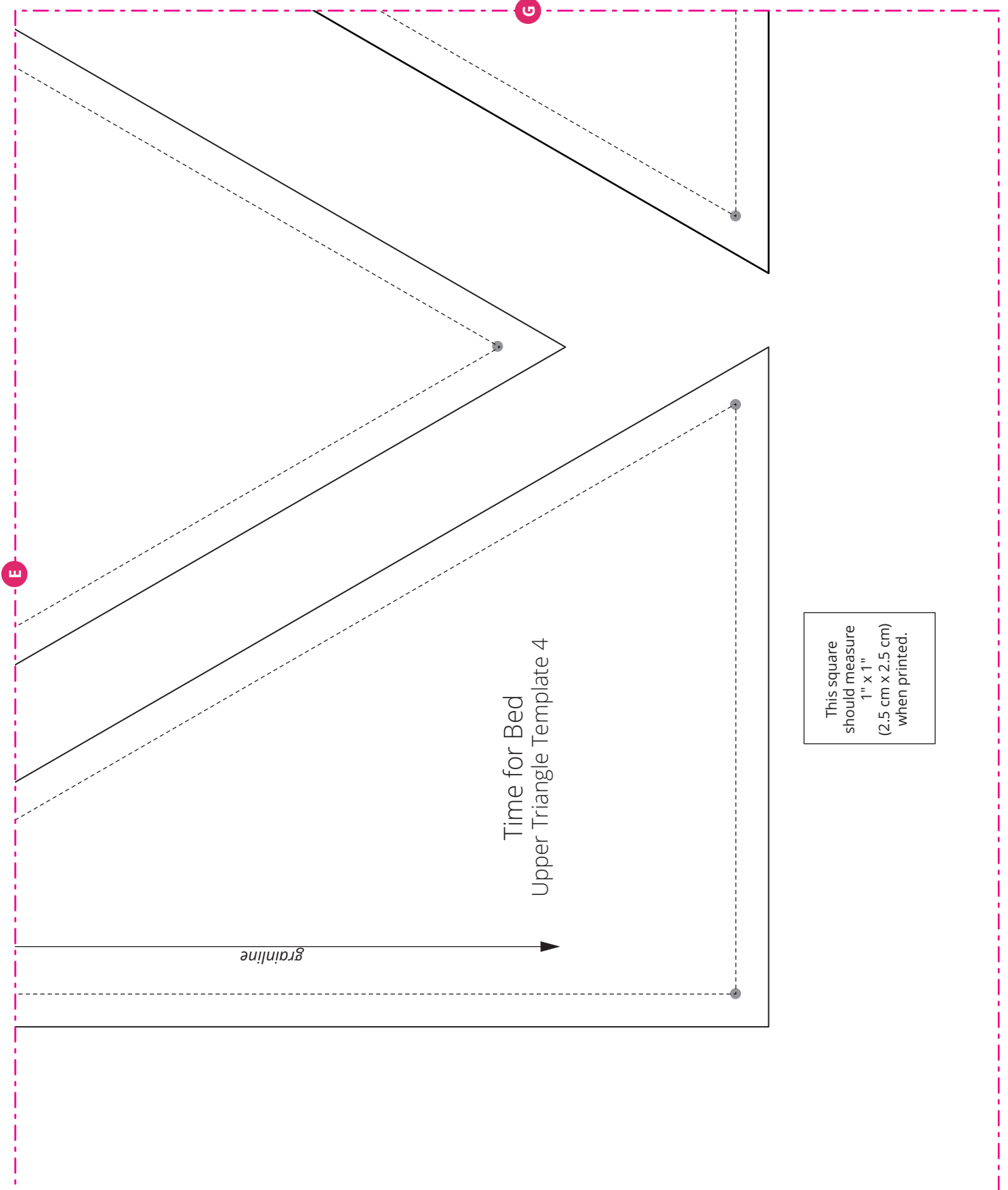


Time for Bed
Side Triangle Template 2

This square
should measure
1" x 1"
(2.5 cm x 2.5 cm)
when printed.



TIME FOR BED QUILT PATTERN

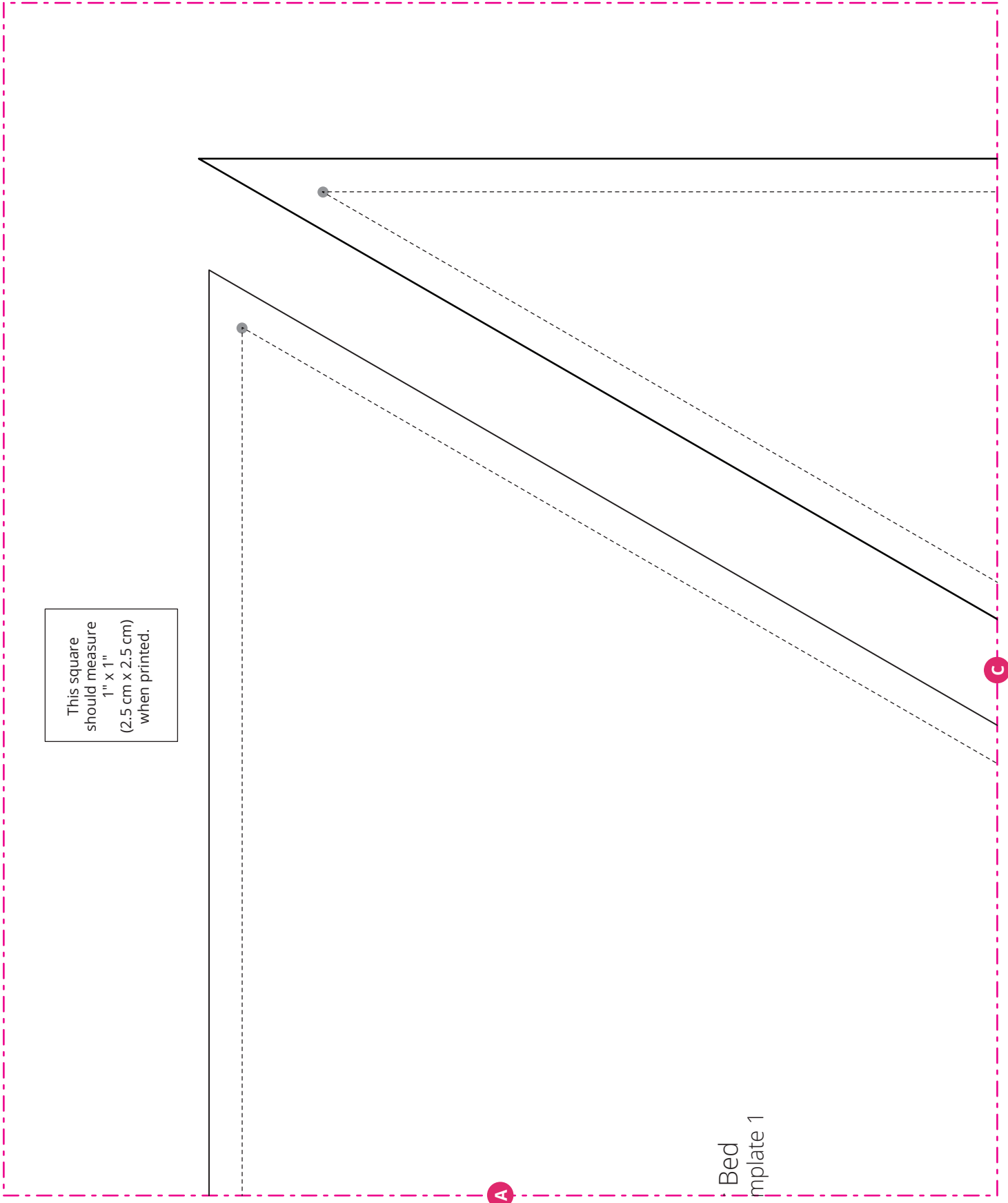


Time for Bed
Upper Triangle Template 4

This square
should measure
1" x 1"
(2.5 cm x 2.5 cm)
when printed.



TIME FOR BED QUILT PATTERN



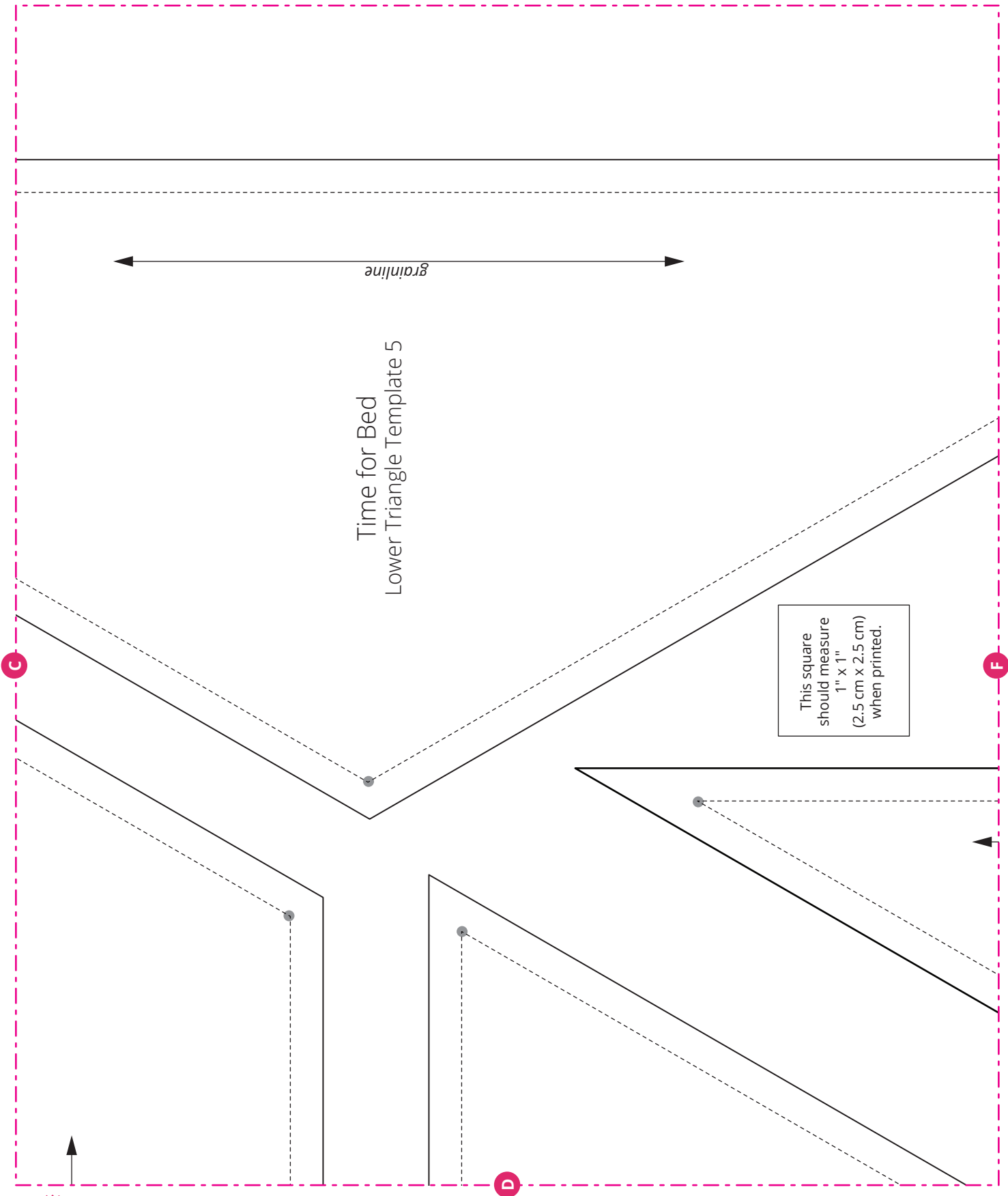
This square
should measure
1" x 1"
(2.5 cm x 2.5 cm)
when printed.

Bed
Template 1



This pattern is owned and licensed by Dear Stella for personal use only and should not be reproduced for sale to any third party.

TIME FOR BED QUILT PATTERN



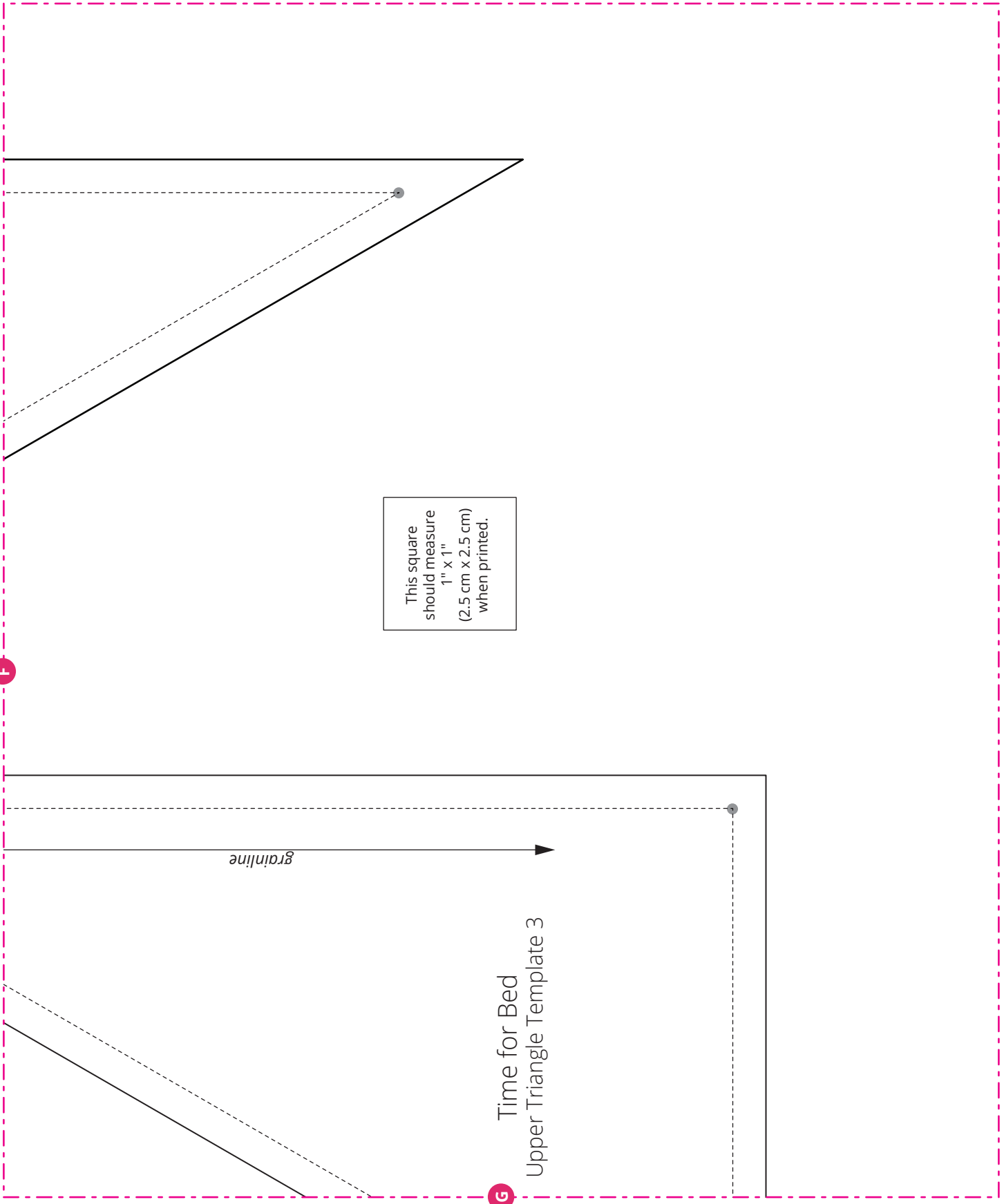
Time for Bed
Lower Triangle Template 5

This square
should measure
1" x 1"
(2.5 cm x 2.5 cm)
when printed.



This pattern is owned and licensed by Dear Stella for personal use only and should not be reproduced for sale to any third party.

TIME FOR BED QUILT PATTERN



This square should measure 1" x 1" (2.5 cm x 2.5 cm) when printed.

Time for Bed
Upper Triangle Template 3



This pattern is owned and licensed by Dear Stella for personal use only and should not be reproduced for sale to any third party.