

ICON HOOD TIE-DOWNS INSTRUCTIONS



ICON HOOD TIE-DOWNS

TOOLS REQUIRED:

- ONE 10MM SOCKET
- ONE RATCHET

HARDWARE REQUIRED:

- ONE STOCK BOLT (ALREADY INSTALLED ON TRUCK)



- ONE M6-1.0 x 25mm, 10mm HEX HEAD BOLT



- ONE M6-1.0 x 16mm, 10mm HEX HEAD BOLT



ICON HOOD TIE-DOWNS INSTALLATION



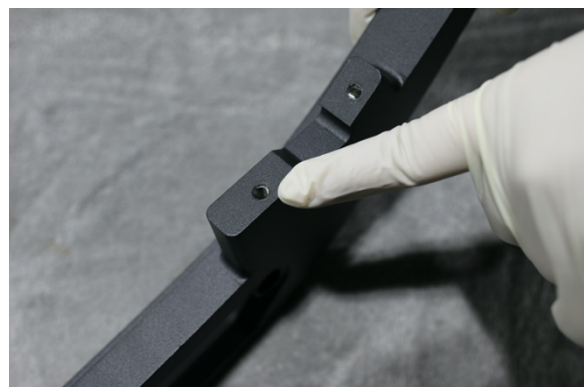
STEP 1: REMOVE STOCK TIE-DOWNS AND HARDWARE
STEP 2: KEEP UPPER BOLT (AS SEEN IN PHOTO, THIS WILL BE REUSED ON NEW TIE-DOWNS)

STEP 3: LINE UP ICON HOOD TIE-DOWNS



ICON
Handmade in Los Angeles
California, USA

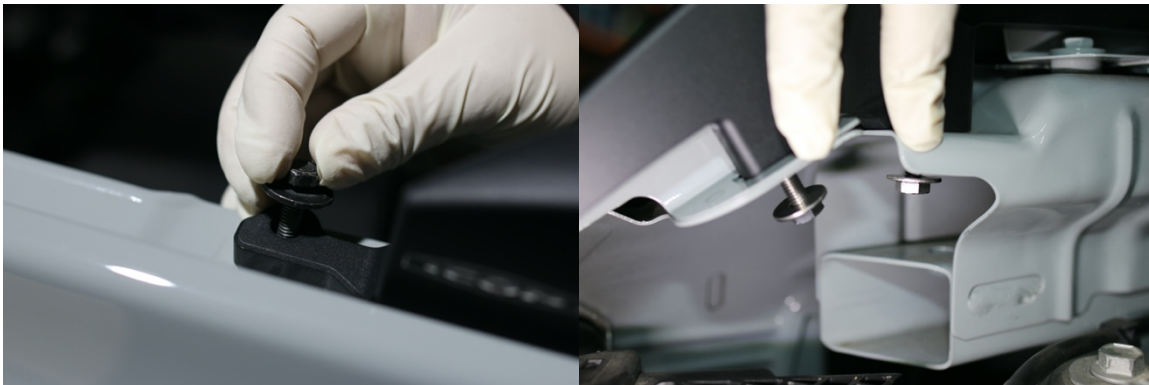
ICON HOOD TIE-DOWNS



ICON HOOD TIE-DOWNS



DUE TO FORD FACTORY VARIATIONS, MINOR FILING MAY BE NEEDED IN CIRCLED AREA TO GET TIE-DOWN ALIGNED PROPERLY AND AVOID TIE-DOWN RUBBING WITH HOOD



STEP 4: ONCE ALIGNED INSERT AND TIGHTEN SCREWS



ICON HOOD TIE-DOWNS



ASSURE TIE-DOWNS ARE SNUG WITH FENDER



PROPER ALIGNMENT



TOO MUCH GAP FROM FENDER

