



*Rasita Bisani*

SPECIALTY FOOD SERVICES EQUIPMENT

Wood-Fired Oven  
FWI 110 Morello Forni



**STANDARD FEATURES**

- Wood fired stone hearth oven
- Constructed from premium high grade alumina complete with heavy metal enclosure and stand.
- Oven walls average 7" thickness with completely sealed wall enclosures.
- Thermal insulation minimum 6" from top to bottom requiring 3" clearance to combustible materials.
- Refractory materials vibrated during curing process to produce exceptionally dense and resistant work surface
- Thermal insulation made of mineral fibre with high insulating properties
- Removable cooking surface slabs
- Granite slab work surface mounted outside mouth opening
- Iron wood holder

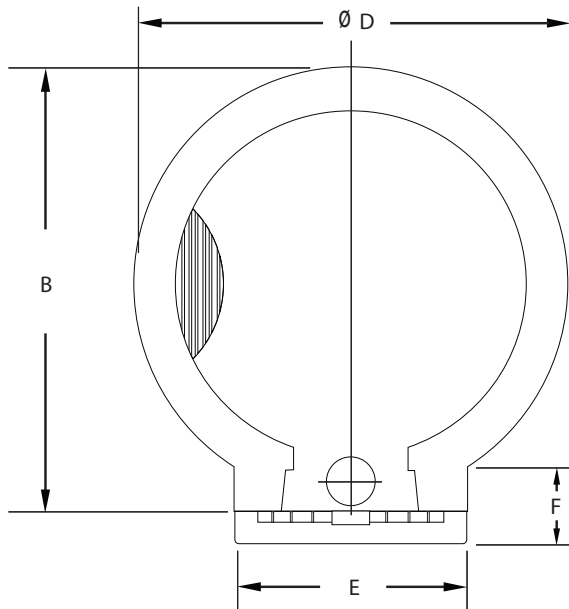
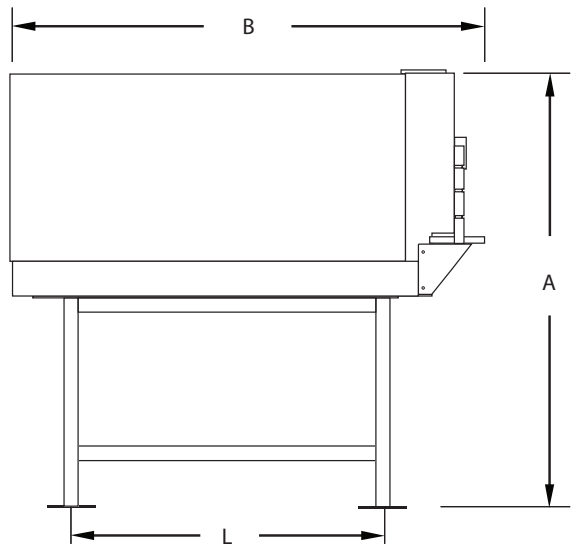
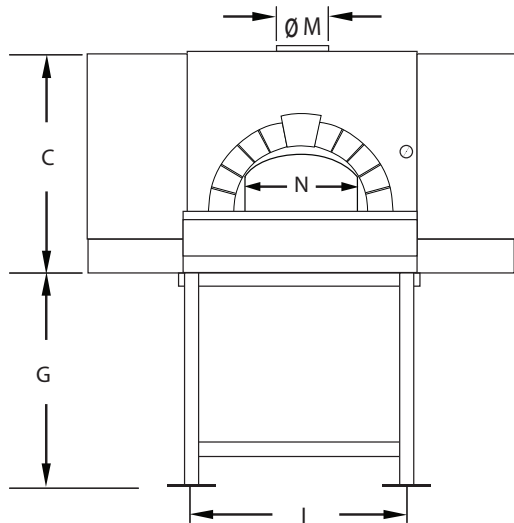
ITEM:

PROJECT:

DATE:

**Wood-Fired Oven  
FW110 Morello Forni**

## Wood-Fired Oven FWI10 Morello Forni



### FLUE CONNECTION

All ovens are provided with an exhaust flue collar  $\frac{1}{2}$ " or  $2\frac{1}{2}$ " in height and 8" or 10" nominal diameter depending on model. The flue collar (ØH) is located on oven top to provide a secure connection to the chimney. The oven flue collar is designed to be connected to chimney listed to UL-103HT. When working on gas only ovens, the oven is suitable for connection to Type B Gas Vent when used with the draft hood. When burning wood, an independent Flue evacuation system is required.

### ELECTRICAL CONNECTION

Verify the power supply has the same rating as the oven.

### AIR SUPPLY

These ovens require make-up air to replace combustion air and excess air taken out by the flue. Always check for adequate openings to allow required make-up air flow in. Check table included in operations manual.

Model/ Specifications	FWI10 (43")	Cooking Time	
		Capacity	(6) x 11"
Weight (lbs.) [Stand]	2,500 [200]	Individual Pizza	2 ~ 3 minutes
		Pan Pizza	4 ~ 6 minutes

Model/ Dimension (inches)	A	B	C	ØD	E	F	G	I	L	ØM	N
FWI10 (43")	74	65	35 ½	58 ¼	31 ½	11 ½	38 ¼	29 ⅞	42 ½	8	21 ½



**Rosito Bisani Imports, Inc.**  
940 South La Brea Avenue, Los Angeles CA, 90036  
Tel: 323-937-1888 • Fax: 323-938-0728 • Toll Free: 1-800-848-4444  
E-mail: sales@rosito-bisani.com

[www.rosito-bisani.com](http://www.rosito-bisani.com)

530 South Henderson Road, Suite F, King of Prussia PA, 19406  
Tel: 610-265-5950 • Fax: 888-576-8524