

# USER GUIDE

GLORIOUS MODULAR MECHANICAL KEYBOARD  
TENKEYLESS



# CONTENTS

<b>Mechanical Keyboard with Modular Switches</b>	01
<b>Product Basics</b>	02
<b>Setup &amp; Support</b>	03
<b>Product Features</b>	04
<b>Hot Key Index</b>	05
<b>Keyboard Layout</b>	06
<b>How to change switches and key caps</b>	07
<b>Mechanical Switch Requirements</b>	09
<b>Keyboard Software</b>	10
<b>LED Light Animations</b>	11
<b>LED Light Settings</b>	12
<b>User Defined LED Effect</b>	13
<b>Other Commands</b>	14
<b>Warranty</b>	15



# MECHANICAL KEYBOARD WITH MODULAR SWITCHES

Trying out different switches, replacing old ones, and matching several types of mechanical keyboard switches used to be difficult and required adequate technical skills in order to be done. The GMMK is the world's first mechanical keyboard featuring hot-swappable switches for Cherry, Gateron, and Kailh branded switches.

Ever wonder what Gateron Blue's felt like? Or what is the craze behind the Cherry MX clears? Want to use Gateron Reds for your WASD, but Gateron Blacks for all your other keys? With the GMMK, you no longer have to purchase an entire new keyboard, or disassemble and solder your switches – you can simply pop out the switch just like a keycap, and mix/match to test out and use any combination of switches you desire.

Armed with a glorious sandblasted aluminium face plate, full NRKO, RGB LED back lighting (several modes), modular switches, double shot injection keycaps, and minimalistic design – The GMMK is revolutionizing the mechanical keyboard market, giving users full control without needing the technical experience required by the gurus.

## THANK YOU FOR PURCHASING THE GMMK MECHANICAL KEYBOARD AND WELCOME TO OUR GLORIOUS LEGION

# PRODUCT BASICS

## PACKAGE CONTENTS

- GMMK Keyboard
- Manual/ Quick Start Guide
- Keycap Puller Tool
- Switch Puller Tool
- Glorious PC Gaming Race Sticker

## SPECIFICATIONS

- Model: GMMK
- Interface: USB 2.0
- N-Key Rollover: Full NKRO via USB, or 6KRO
- Backlight: RGB LED
- Cord Length: 6 ft. Braided
- Hotkeys: My Computer, Web Browser, Calculator, Media Player, Previous Track, Next Track, Play/ Pause, Stop, Mute, Volume Decrease, Volume Increase
- OS Support: Windows XP, Vista, 7, 8, 10

## SYSTEM REQUIREMENTS

- Available USB port
- Windows XP, Vista, 7, 8, 10

# SETUP & SUPPORT

## SETTING UP

**Plug & Play:** Connect the keyboard to an available USB port and the keyboard will automatically install all necessary drivers

**Using hotkeys:** To utilize the secondary hotkey functions of some keys, hold down the FN key and press the hotkey of your choice

## SUPPORT/ SERVICE

We want you to be happy with your new GMMK keyboard. If you have any questions or issues with your keyboard, please do not hesitate to contact us

Alternatively, please visit us at [www.pcgamingrace.com](http://www.pcgamingrace.com) where you can find our frequently asked questions, troubleshooting tips and look at our other glorious products

### Here is how to reach us

By email (preferred): [www.pcgamingrace.com/support](mailto:support@pcgamingrace.com)

# PRODUCT FEATURES

## FULL MODULAR MECHANICAL KEYS

Switches can easily be replaced with any MX style switch (Cherry, Gateron, Kailh)

## EASY ACCESS HOT-KEYS

Directly access shortcuts to productivity, internet, and multimedia functions

## RAISED KEYS, MINIMALIST DESIGN

No visible branding on keyboard to make your battlestation look clean as possible. Raised key design allows you to easily clean your keyboard

## LED BACKLIGHTING

RGB LED lights with 16.8 million colors and 18 special effects, and 1 slot for user-defined effect. Variable animation speeds and brightness settings. Effects programmable via keyboard or via software (more options)

## SANDBLASTED ALUMINIUM FACEPLATE

Professional-grade aluminium delivers a premium look and feel

## SOFTWARE/ MACROS/ CUSTOMIZABILITY

Optional software included to create custom macros, profiles, and more advanced back lighting effects

# HOT KEY INDEX



**My Computer**



**Web Browser**



**Calculator**



**Media Player**



**Previous Track**



**Next Track**



**Play/ Pause**



**Stop**



**Mute**



**Volume Decrease**

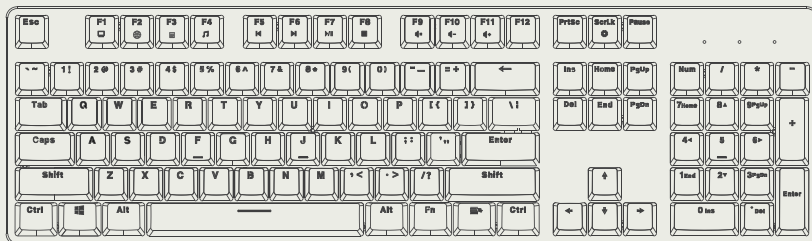


**Volume Increase**



**Scroll Lock Change**

# KEYBOARD LAYOUT



My Computer



Web Browser



Calculator



Media Player



Previous Track



Next Track



Play/Pause



Stop



Mute



Volume Decrease



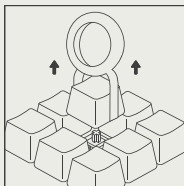
Volume Increase



Scroll Lock Change

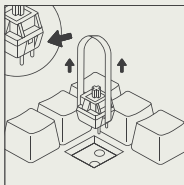


# HOW TO CHANGE SWITCHES AND KEY CAPS



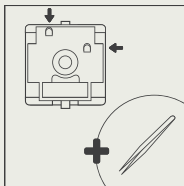
## 01. REMOVE KEYCAP

Use the keycap puller tool to clamp on a keycap and pull upwards to detach keycap with switch. Sometimes the switch may come out as well if the keycap is secured tightly on switch, which is normal. For longer keys such as the space bar, always clamp and remove from the MIDDLE of the keycap



## 02. REMOVE SWITCH

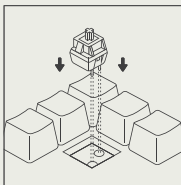
Use the switch puller to push in the two tabs located on the top and bottom side of the switch. Once they are pushed in, pull upwards to remove switch from keyboard case. Warning: It is very easy to scratch your keyboard case with this tool, so take caution when removing switches!



## 03. READJUST PINS

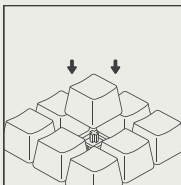
When inserting a new switch, first make sure it is compatible (see switch requirements). Inspect the copper pins on bottom of switch and that they are perfectly straight. Sometimes due to shipping, or improper insertion, the pins can be easily bent. The pins can be easily straightened back out with tweezers/ pliers (available via all our switch boxes)

# HOW TO CHANGE SWITCHES AND KEY CAPS



## 04. INSERT SWITCH

Align switch to holes on the keyboard, and insert straight down. There should be minimal resistance and the switch should pop into the frame of the keyboard. It is recommended at this time to have a text-editor on your PC open to make sure the switch works when you press it.



You could also set the LED mode on keyboard to REACTIVE MODE, and the switch should light up when you press it.

**It is safe to swap switches while your keyboard is plugged in to your PC.**

If the switch does not light up, or register a key on your PC when you press it, then the switch was not inserted properly. Remove switch and make sure pins are straight then insert again.

## 05. INSERT KEYCAP

Once you have confirmed the switch was properly inserted, snap back in the appropriate keycap

# MECHANICAL SWITCH REQUIREMENTS

The GMMK is designed to work the following switch brands: Cherry, Gateron, Kailh. We currently sell Gateron compatible switches on our website.

Although other brands of switches will fit, they may be loose or have a tighter fit than normal. There are several types of Cherry/ Gateron/ Kailh switches available.

These are the specific requirements for the type of switches that are compatible.

## SWITCH REQUIREMENTS

### CHERRY/GATERON/ KAILH BRANDED

Zealio switches also work (plate mounted). Other brands may be compatible but their fit on the keyboard may vary

## SMD LED COMPATIBLE SWITCHES

This is optional if you want to have the backlight function, as a non LED switch would block the light. Non LED switches can be modified by user to support SMD LEDs. For the best LED performance, a SMD-LED such as the ones made by Gateron are recommended

# KEYBOARD SOFTWARE

The GMMK keyboard is also compatible with our software to tweak your keyboard to your needs. In order to unlock the 16.8 million palette your keyboard can display, you must configure it via software. Profiles and custom macros are also now available via GMMK software

To download the latest GMMK software go to:

**<https://www.pcgamingrace.com/pages/gmmk-software-download>**  
(compatible on Windows only)

Instructions with how to use the software are included at download link above. You do not need the software to use the GMMK keyboard, or to do basic customizability

# LED LIGHT ANIMATIONS

## BREATH



- Effect 1: Single LED color changing effect
- Effect 2: Pulsing/ Breathing mode
- Effect 3: Single LED color (no changing effect)

## WAVE #1



- Effect 1: Wave effect (with fade)
- Effect 2: Wave effect (less fade)
- Effect 3: Wave effect in an oval shape

## TOUCH



- Effect 1: LED spreads from point a key was pressed to other keys
- Effect 2: Keys light up and fade when they are pressed
- Effect 3: LED light spreads to the entire row of the key when pressed

## WAVE #2



- Effect 1: Diagonal oscillating LED effect
- Effect 2: Single color LED lighting
- Effect 3: RGB LED color cycle

## K-EFFECT



- Effect 1: All random colors on all keys changing slowly (fade)
- Effect 2: All random colors on all keys changing quickly (no fade)
- Effect 3: Each row has its own color, changing slowly (fade)

## DRAWING

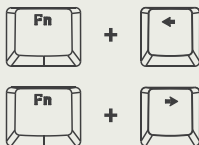


- Effect 1: Wave like spreading of LED lights from center
- Effect 2: Heart shape pulsing and fading of LEDs
- Effect 3: Matrix style LED effect

# LED LIGHT SETTINGS

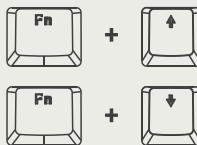
The RGB lighting on the GMMK can be customized via software or on keyboard. More customizability is available via our software. Below are commands on how to customize the GMMK via commands.

## CHANGE LED ANIMATION SPEED



Note: When Caps/ Num/ Scroll lights are blinking then you have reached the minimum or maximum speed

## CHANGE LED BRIGHTNESS



Note: When Caps/ Num/ Scroll lights are blinking then you have reached the minimum or maximum brightness

## CHANGE LED BACK LIGHT COLOR (8 OPTIONS)



## CHANGE LED ANIMATION RUNNING DIRECTION



# USER DEFINED LED EFFECT



To enable your custom  
user defined effect



Press again to enter edit mode  
Press keys when Caps/ Scroll/ Nums lock lights  
are blinking you wish to light up



To select which color you would like to  
change those selected keys to (cycles  
between 8 colors)



To save settings (Caps/ Scroll/ Num locks  
keys should stop blinking)



To turn off keyboard backlight

# OTHER COMMANDS

## RESTORE KEYBOARD TO FACTORY DEFAULT SETTINGS



Toggle between 6-KEY and N-KEY Mode (default)

Note: Keep this setting set to N-Key if you don't know what this means

### CHANGE TO 6-KEY



### CHANGE TO N-KEY





# WARRANTY

## IMPORTANT NOTICES

- 1 year limited Manufacturer Warranty
- The Warranty does not cover damages as a result of changing the keycaps or switches
- Keep out of reach of children below the age of 10
- Keycaps and other small objects should be swallowed

Glorious PC Gaming Race LLC warrants only to the original purchaser of this product, when purchased from a Glorious PC Gaming Race LLC authorized reseller or distributor, that this product will be free from defects in material and workmanship under normal use and service for the length of the warranty period after purchase.

Glorious PC Gaming Race LLC reserves the right, before having any obligation under this warranty, to inspect the damaged Glorious PC Gaming Race product. Initial shipping costs of sending the Glorious PC Gaming Race product to the Glorious PC Gaming Race LLC service center in Salt Lake City, Utah, for inspection shall be borne solely by the purchaser. In order to keep this warranty in effect, the product must not have been mishandled or misused in any way.

This warranty does not cover any damage due to accidents, misuse, abuse or negligence. Please retain the dated sales receipt as evidence of the original purchaser & date of purchase. You will need it for any warranty services. In order to claim under this warranty, purchaser must contact Glorious PC Gaming Race LLC and obtain an RMA # which is to be used within 15 days of issuance and must present acceptable proof of original ownership (such as original receipt) for the product.

Glorious PC Gaming Race LLC, at its option, shall repair or replace the defective unit covered by this warranty. This warranty is non-transferable and does not apply to any purchaser who bought the product from a reseller or distributor not authorized by Glorious PC Gaming Race LLC, including but not limited to purchases from internet auction sites. This warranty does not affect any other legal rights you may have by operation of the law. Contact Glorious PC Gaming Race LLC through email, or through one of the technical support numbers listed for warranty service procedures.

©2019 Glorious PC Gaming Race LLC. All Rights Reserved. All product names, logos, and brands are property of their respective owners. All company, product and service names used on this packaging/manual are for identification purposes only. Use of these names, logos, and brands does not imply endorsement.

