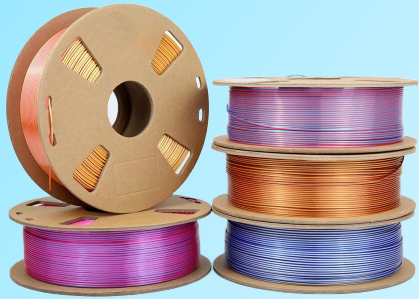


**WISEPRO**

# **3D Printing Product Manual**

## 3D Printer Filaments



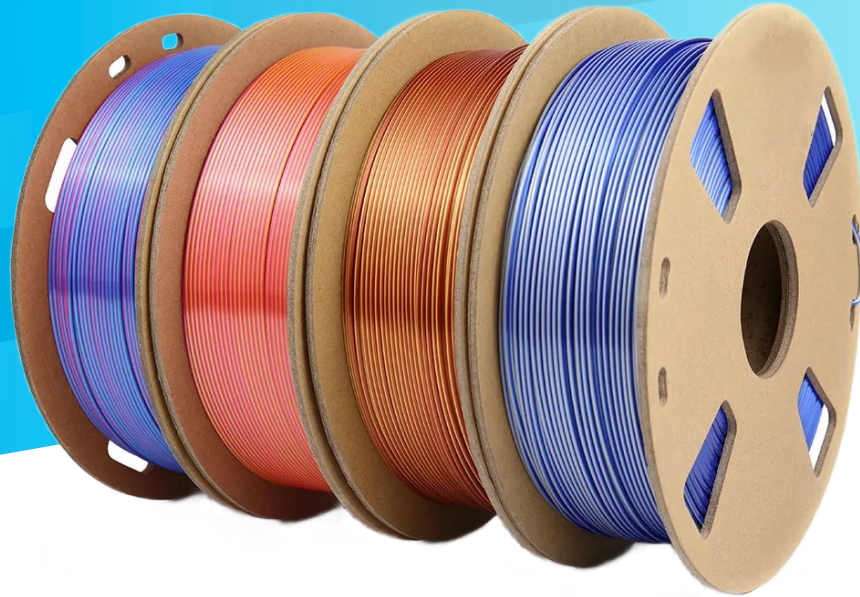
**General Filaments**  
**Aesthetic Filaments**  
**Engineering Filaments**  
**Magic Filaments**

## Parts & Accessories



**UV Resin Curing Box**  
**Filaments Dryer Box**  
**3D Printer Enclosure**  
**Filaments Connector**

## 3D Printer Filaments



3D Printer  
Filament

- **General Filaments**

PLA, PLA PRO, PETG, ABS, TPU-95A...

- **Aesthetic Filaments**

PLA Clear, PLA Rainbow, PLA Matte, PLA Silk, PLA Silk Rainbow, PLA Marble, PLA Silk Marble, PLA Wood, PLA Stars, PLA Luminous, TPU-95A Rainbow...

- **Engineering Filaments**

PLA-ST, PA, PA-CF, PA12, PA12-CF, PC, ASA...

- **Functional Filament**

PVA, HIPS, PLA-LW...

- **Magic Filaments**

Bicolor PLA Silk, Bicolor PLA Matte, Tricolor PLA Silk, Tricolor PLA Matte...

## PLA

---



### **Product Features:**

PLA is an environmentally friendly material derived from corn, which is safer to use. Compared to ABS, PLA has higher rigidity and strength without the need for a closed cavity. Large-scale models can be printed, and the finished product has a smooth surface.

### **Print Setting:**

- Print temp: 180~210°C
- Bed Temp: No Heating / 45~60°C
- Printing speed : 30~90mm/s

## PLA PRO

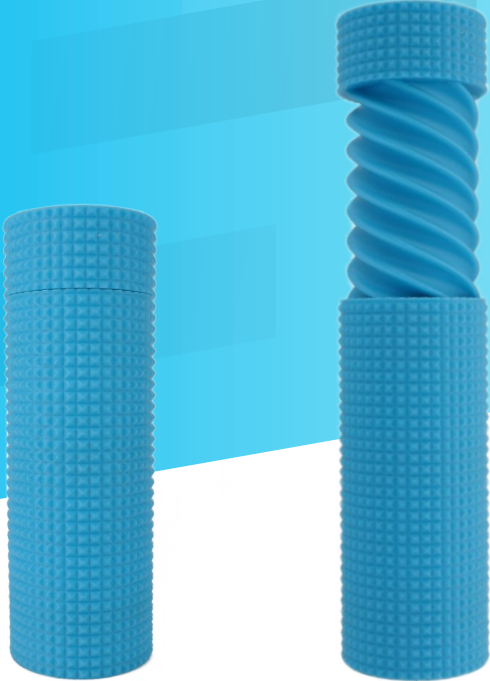
---

### **Product Features:**

PLA+ is an environmentally friendly material modified based on PLA material. It is easy to print, improves toughness and interlayer bonding, and is very suitable for functional parts printing.

### **Print Setting:**

- Print temp: 190~220°C
- Bed Temp: No Heating / 45~60°C
- Printing speed : 30~90mm/s



General  
Filaments

## PETG

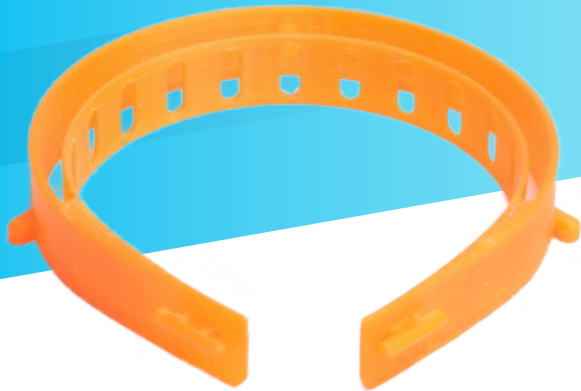
---

### **Product Features:**

PETG is a transparent material with water resistance, chemical resistance and high toughness. It is cost-effective and easy to print without constant temperature chamber. The printed product has a certain transparency and toughness far beyond ABS, without edge warping and cracking.

### **Print Setting:**

- Print temp: 200~230°C
- Bed Temp: 75~90°C
- Printing speed : 40~100mm/s



## ABS

---

### **Product Features:**

ABS has good toughness and impact resistance for printing strong and durable parts and can be treated with acetone. High heat distortion temperature for outdoor and high temperature applications.

### **Print Setting:**

- Print temp: 220~260°C
- Bed Temp: 95~110°C
- Printing speed : 40~100mm/s



## TPU-95A

---

### **Product Features:**

TPU-95A is a flexible TPU material with a hardness of 95A. It has good flexibility and is easy to print. It can quickly produce large, complex and accurate prototypes of elastomer parts, and the finished product is not easy to deform.

### **Print Setting:**

- Print temp: 190~210°C
- Bed Temp: No Heating / 45~60°C
- Printing speed : 20~50mm/s





## PLA Matte

---

### **Product Features:**

PLA-Matte is a cost-effective PLA material that is easy to print. The surface is smooth and flat; the matte surface effect, the surface is delicate and does not show layers.

### **Print Setting:**

- Print temp: 190~210°C
- Bed Temp: No Heating / 45~60°C
- Printing speed : 40~100mm/s





## PLA Silk

---

### **Product Features:**

PLA Silk is modified based on PLA material. It is easy to print. The surface of the model is smooth without lamination. It has silk like luster and texture.

### **Print Setting:**

- Print temp: 180~210°C
- Bed Temp: No Heating / 45~60°C
- Printing speed : 40~100mm/s

## PLA Silk Rainbow



### 👍 Product Features:

PLA Silk Rainbow is modified based on PLA material. It is easy to print and has a brilliant rainbow appearance. The surface of the model is smooth without layers, and has a silk-like luster and texture.

### ⚙️ Print Setting:

- Print temp: 190~210°C
- Bed Temp: No Heating / 45~60°C
- Printing speed : 40~100mm/s

## PLA Star Glitter

---



### **Product Features:**

PLA Star Glitter is based on the addition of fine glitter powder to PLA material, which has a glittery appearance and is easy to print.

### **Print Setting:**

- Print temp: 190~210°C
- Bed Temp: No Heating / 45~60°C
- Printing speed : 40~100mm/s



## PLA Marble

---

### **Product Features:**

PLA Marble is modified based on PLA material, which is easy to print and has the appearance of imitating marble. The appearance of the printed product is similar to that of marble carving.

### **Print Setting:**

- Print temp: 180~210°C
- Bed Temp: No Heating / 45~60°C
- Printing speed : 40~100mm/s



## PLA Silk Marble

---

### **Product Features:**

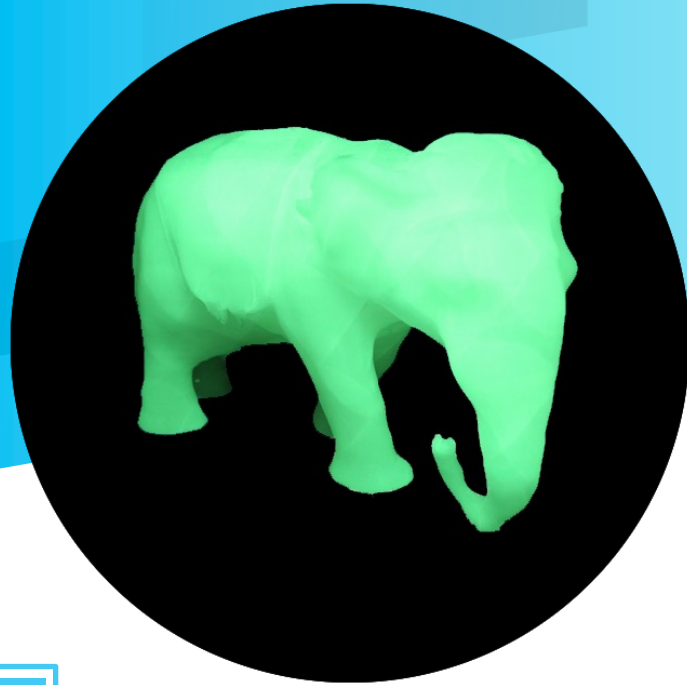
PLA Silk Marble is modified based on PLA material, which is easy to print and has the appearance of imitating marble. At the same time, it has the smooth texture of silk, no need for additional polishing.

### **Print Setting:**

- Print temp: 180~210°C
- Bed Temp: No Heating / 45~60°C
- Printing speed : 40~100mm/s

## PLA Luminous

---



### **Product Features:**

PLA Luminous is an environmentally friendly material modified based on PLA material, which is easy to print. Added gorgeous luminous appearance effect, full of artistic beauty.

### **Print Setting:**

- Print temp: 180~210°C
- Bed Temp: No Heating / 45~60°C
- Printing speed : 40~100mm/s

## PLA Luminous Rainbow

---



### **Product Features:**

PLA Luminous Rainbow is an environmentally friendly material modified based on PLA material, which is easy to print. The romantic appearance effect of luminous rainbow is added, which is full of artistic beauty.

### **Print Setting:**

- Print temp: 180~210°C
- Bed Temp: No Heating / 45~60°C
- Printing speed : 40~100mm/s





## TPU-95A Rainbow

---

### **Product Features:**

The appearance of TPU-95A Rainbow has a colorful and brilliant rainbow effect, with good flexibility, hardness of 95A, easy to print, and can quickly produce large, complex and accurate prototypes of elastomer parts; excellent elasticity, the product is not easy to deform.

### **Print Setting:**

- Print temp: 190~210°C
- Bed Temp: No Heating / 45~60°C
- Printing speed : 20~50mm/s

## PLA-ST (Super Tough)

---



### **Product Features:**

PLA-ST has the good printability of PLA, and its toughness surpasses that of PETG. As a strong and tough material, it is suitable for printing prototypes of mechanical parts that require toughness and precision.

### **Print Setting:**

- Print temp: 200~230°C
- Bed Temp: No Heating / 45~60°C
- Printing speed : 40~100mm/s

## PA

---

### **Product Features:**

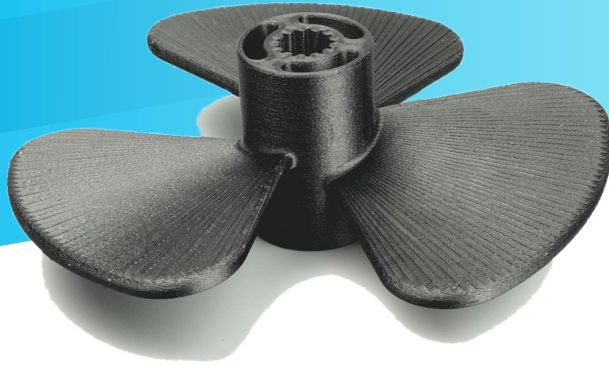
PA is self-lubricating and wear-resistant, suitable for printing gears; elongation at break up to 175% produces strong and durable parts with high fracture resistance.

### **Print Setting:**

- Print temp: 250~290°C
- Bed Temp: 70~90°C
- Printing speed : 40~100mm/s

## PA-CF

---



### **Product Features:**

The 3D printer filament developed based on nylon 6/66 copolymer add 20% carbon fiber; the strength, rigidity and toughness are greatly enhanced, self-lubricating and wear-resistant, and can print mechanical gears; the surface of the finished product is matte and delicate.

### **Print Setting:**

- Print temp: 260~300°C
- Bed Temp: 80~90°C
- Printing speed : 40~100mm/s

## PA12-CF

---

### **Product Features:**

The filament developed based on PA12 has greatly enhanced strength, rigidity and toughness, low water absorption, high temperature resistance, self-lubricating and wear-resistant. With low surface resistivity, it can be used as conductive and antistatic material.

### **Print Setting:**

- Print temp: 270~300°C
- Bed Temp: 80~90°C
- Printing speed : 40~100mm/s



## ASA

---

### **Product Features:**

The properties of ASA are similar to ABS. ASA has better toughness, rigidity, impact resistance, and is more resistant to UV rays and harsh weather. Excellent weatherability and mechanical properties make it more resistant to environmental aging and suitable for outdoor applications.

### **Print Setting:**

- Print temp: 240~270°C
- Bed Temp: 90~110°C
- Printing speed : 40~100mm/s

## PVA

---



### **Product Features:**

The filament with good water solubility, no special solvent is needed, it can be dissolved quickly in hot water, there will be no residue after dissolution, and the contact surface is smooth and flat; it can be used for PLA, TPU, PA and other filaments to print extremely complex shapes or have partial Support material in the shape of a closed cavity.

### **Print Setting:**

- Print temp: 180~230°C
- Bed Temp: 45~60°C
- Printing speed : 20~50mm/s

## PLA-LW

---

### **Product Features:**

PLA-LW is specially developed for model aircraft, with light weight and low density, which greatly improves the performance of model aircraft, making it have lighter wing load and lower stall speed. Foaming volume ratio 220%.

### **Print Setting:**

- Print temp: 190~270°C
- Bed Temp: No Heating / 45~60°C
- Printing speed : 40~100mm/s





## Bicolor PLA Silk



### Product Features:

Bicolor PLA Silk is modified based on PLA material, easy to print, Smooth and shiny finish like real silk, no extra polishing needed. Make the two sides of your print appear in different colors, just like magic.

### Print Setting:

- Print temp: 190~210°C
- Bed Temp: No Heating / 45~60°C
- Printing speed : 40~100mm/s

## Bicolor PLA Matte

---



### **Product Features:**

Bicolor PLA Matte is modified based on PLA material, the surface is smooth and flat; the matte surface effect, the surface is delicate and does not show layers. Make the two sides of your print appear in different colors.

### **Print Setting:**

- Print temp: 190~210°C
- Bed Temp: No Heating / 45~60°C
- Printing speed : 40~100mm/s

## Tricolor PLA Silk

---



### **Product Features:**

Tricolor PLA Silk is modified based on PLA material, easy to print, Smooth and shiny finish like real silk, no extra polishing needed. The printed model will show different colors from different perspectives, which is very visually striking.

### **Print Setting:**

- Print temp: 190~210°C
- Bed Temp: No Heating / 45~60°C
- Printing speed : 40~100mm/s

## Tricolor PLA Matte

---



### **Product Features:**

Tricolor PLA Matte is modified based on PLA material, the surface is smooth and flat; the matte surface effect, the surface is delicate and does not show layers. The printed model will appear in different color changes on different sides, just like magic.

### **Print Setting:**

- Print temp: 190~210°C
- Bed Temp: No Heating / 45~60°C
- Printing speed : 40~100mm/s



## Parts & Accessories

- **For Filaments**

Filament Dryer Box, Filament Connector, 3D Printer Enclosure...

- **For Resin**

Foldable UV Resin Curing Box, Resin Washing Machine, Automatic Feeding System...

## Filament Dryer Box



### Product Features:

A multifunctional filament storage box specially developed for 3D printer filament. It has the functions of high-efficiency heating, moisture-proof and dust-proof, constant temperature and humidity, etc. Arc-shaped heating structure, the heat is even, the fastest 2 hours to produce effect; low-noise turbo fan, the environment is quieter.

### Application:

PC / PLA / ABS / PVA / ePA / PETG / ePA-CF / ePA-GF / TPU-95A and other easily absorbent materials.

For  
Filament

## Filament Connector



### Product Features:

This 3D printer filament connector is an auxiliary tool specially developed for FDM consumables with a diameter of 1.75mm. Users can mix and match filaments of different colors arbitrarily, and can also recycle the remaining filaments.

### Application:

1.75mm PLA / ABS / PETG / PA-CF / TPU-95A / PA / PC ...

For  
Filament

## Vacuum Kit



### 👍 Product Features:

Portable household vacuum device, especially suitable for high water absorption material and unused residual material storage, to prevent the material from absorbing moisture and affecting the printing quality.

### 🌸 Application:

PC / PLA / ABS / PVA / ePA / PETG / ePA-CF / ePA-GF / TPU-95A and other easily absorbent materials.

For  
Filament



## UV Resin Curing Box



### **Product Features:**

NOX-I is a equipment designed for the secondary curing process of post LCD/DLP/SLA 3D printed models. Models being in this process will gain an optimum appearance and function to the largest extent.

Foldable Design; Convenient Operation; Smart Time Setting; Intelligent Protection; Professional Lamp Beads; Support Mobile Power; Large Curing Size: 220\*220\*270mm; Uniform Curing; Independent Solar Turntable.

### **Application:**

All 405nm wavelength types of resins.



## Washing Machine

### **Product Features:**

Washing machine can deeply clean the residual resin on the model. The cleaned model can avoid problems such as lack of precision, appearance defects, etc., and make the model obtain an optimum appearance and function.

### **Application:**

All 405nm wavelength types of resins.

For Resin



# WISEPRO

— Explore Better Innovation —

---

## About us

In 2021, Wisepro was born in Shenzhen, China.

Under the severe situation of the global epidemic, we went retrograde and moved forward, Wisepro was founded, without much hesitation.

"3D printing technology can do many things, but the cost is too high".

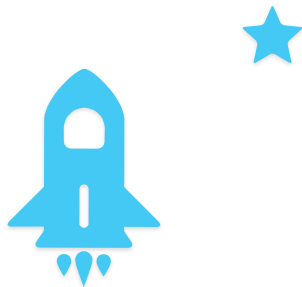
This is the original intention of Wisepro.

We hope everyone can use 3D printing to do what they like.

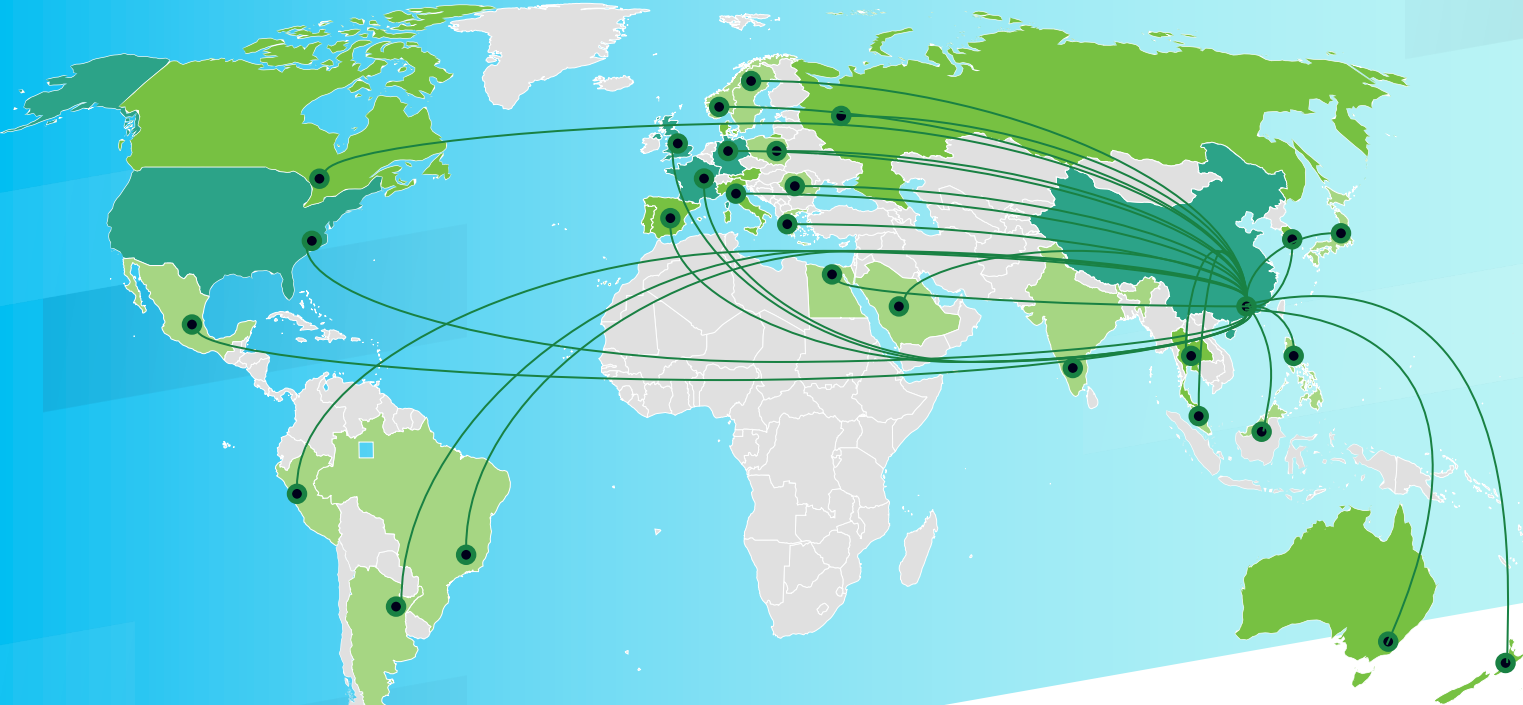
We hope to make the purest and most cost-effective 3D printing products, to reduce the complexity, and to provide customers with a better 3D printing experience.

We are brave to explore!

We keep innovating, we are always on the road!



**WISEPRO**



## Official Store



## Facebook



## Instagram



深圳市益泓科技有限公司

ShenZhen Yihong Technology Co.,Ltd.

EMAIL: [service@wisepro3d.com](mailto:service@wisepro3d.com) WEB: [www.wisepro3d.com](http://www.wisepro3d.com)