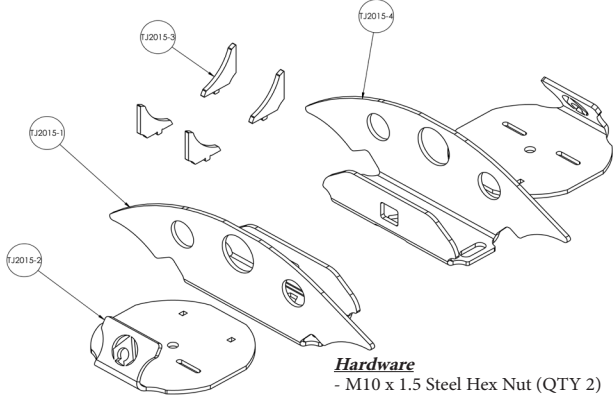


ARTEC INDUSTRIES TJ/LJ HD REAR COIL CORRECTION KIT

Thank you for your purchase of our TJ/LJ HD Rear Coil Correction Kit. If you have any questions that are not answered in these instructions, please feel free to contact us directly at sales@artecindustries.com or 855-278-3299 and we will be happy to help you.

Bill of Materials TJ2015

ITEM NO.	PART NUMBER	QTY.
1	TJ2015-1	1
2	TJ2015-2	2
3	TJ2015-3	4
4	TJ2015-4	1

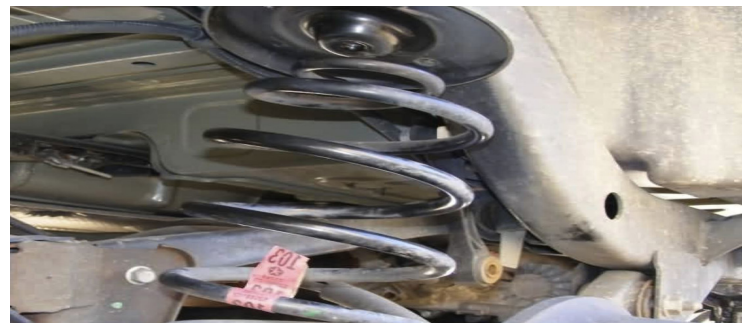


REQUIRED TOOLS

- Floor Jack
- Jack Stands
- Plasma cutter or cut off wheels for a grinder
- Grinder
- Sanding wheel for grinder
- Welder
- Black Paint

STEP 1. Unpack contents of shipment. Make sure that all of the parts required are included with your kit. If any items are missing, and packaging is damaged, report it to the shipping company driver, **KEEP ALL ORIGINAL PACKAGING & contact us.**

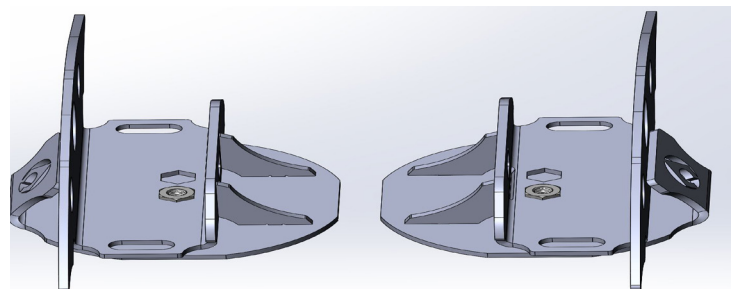
STEP 2. First start by parking the vehicle on level ground and apply the parking brake. Next Start by supporting the the frame so that the axle can hang freely. Remove the rear tires for ease of access to the coil brackets. The rear coils must be removed, to make this easier it will help to remove the shocks and disconnect the sway bar links to allow the axle to drop out allowing the coils to be removed easily.



STEP 3. Next you will need to cut off the factory coil buckets, take extreme caution to not throw sparks on the fuel tank and fuel lines. Once the mounts are removed grind the frame clean where the new bracket will be installed.

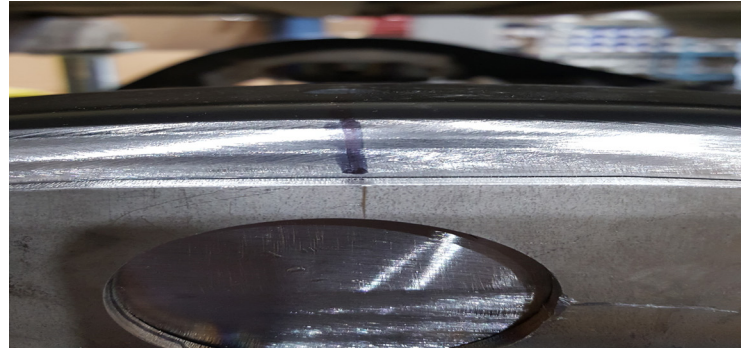


STEP 4. The next step is to assemble and weld the bracket assemblies together. The brackets feature two locations for the jounce tube bolt. The brackets are etched for ease of assembly. Choose either the factory or the 1" stretch hole and insert the nut flush to the bottom of the bracket. Tack weld the nut so that it does not fall out. Finish weld the bracket assemblies and prepare them for installation.



NOTE: THIS KIT INVOLVES VEHICLE MODIFICATION AND MECHANICAL SKILLS. IF YOU ARE NOT CONFIDENT IN YOUR SKILLS, CONTACT A PROFESSIONAL INSTALLER.

STEP 4. Next lets fit the brackets onto the frame. The brakets are etched with their location. Also notice the passenger bracket has an etched cut line if you are using the stock track bar bracket this will need to be cut for proper fitment. To align the brakets there is a hole on the top of the frame, draw a center line from this hole to the outside of the frame. The bracket has an etched line for alignment. Once you have set the bracket, clamp it tight and tack weld it in place. Verify fitment and weld into place.



STEP 5. Allow brackets to cool and apply paint to prevent rust. Remove the jounce tube cup from the old coil mounts and bolt to the new brackets. Re-install the coils and remaining components.

**Artec Industries, LLC is not responsible or liable for improper installation of this kit. Use common sense when installing.

NOTE: THIS KIT INVOLVES VEHICLE MODIFICATION AND MECHANICAL SKILLS. IF YOU ARE NOT CONFIDENT IN YOUR SKILLS, CONTACT A PROFESSIONAL INSTALLER.