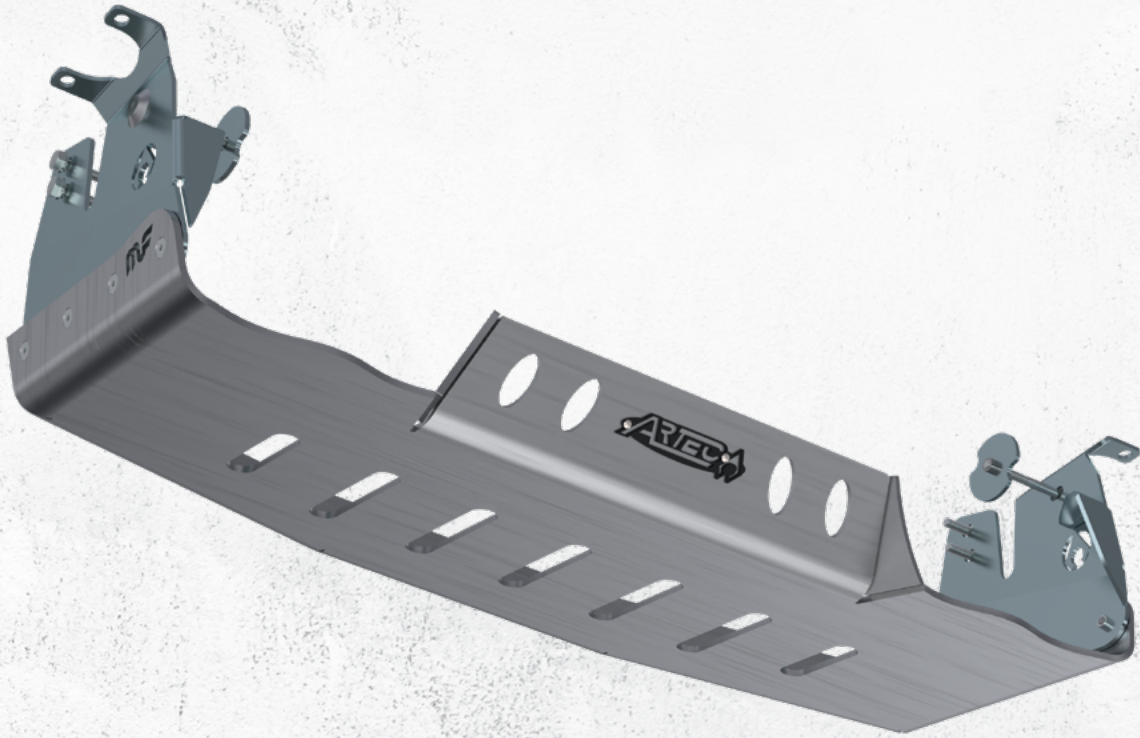




## PART # JL4120

### JLU 392 MAGNAFLOW MUFFLER SKID INSTALLATION INSTRUCTIONS



#### ESTIMATED INSTALLATION TIME

**.5 to 1 hours**

#### REQUIRED SKILLS

- General Mechanics Skills

#### REQUIRED TOOLS & SUPPLIES

- 18mm Socket
- 16MM Socket
- Ratchet
- Breaker Bar
- 7/32 inch allen wrench

#### NOTES:

- Component appearance in instructions may vary from those received

**COMPATIBLE WITH: MAGNAFLOW 2021-2023 STREET  
SERIES CAT-BACK PERFORMANCE EXHAUST SYSTEM**

**SKU #19598**

## WARNING MESSAGES

This product demands a basic understanding of mechanical procedures and should only be installed by individuals proficient with mechanic's tools. Any tasks involving welding or cutting parts should be performed by trained professionals. Artec Industries disclaims responsibility for mishaps arising from improper installation, or any damage or accidents resulting from cutting or welding tasks. Exercise caution and seek professional help as required

## SAFETY

1. We've furnished a written installation guide, along with relevant details, to aid you in making safety-conscious decisions.
2. While these guidelines will highlight potential risks, it's crucial to exercise your personal judgment when performing any required steps.
3. Before initiating any tasks, it's essential to conduct a job safety analysis to identify specific hazards in your situation and take measures to eliminate or protect against them.
4. Before commencing the installation of this product, make sure you familiarize yourself with and fully understand all safety warnings and guidelines.

## DISCLAIMERS

All Artec Industries products should be installed by a competent, certified individual following the intended installation instructions for each product. Incorrect installations not only nullify any warranties but could also lead to product damage or even damage to the vehicle it's installed on. Prior to installation, carefully read all provided instructions or manuals, and watch any associated videos. For any doubts or queries, reach out to Artec Industries before beginning the installation process.

Many products necessitate lifting and supporting the vehicle off the ground. It is the installer's responsibility to ensure this can be done safely and that the right equipment is at hand to carry out the installation. Artec Industries installation instructions presume the installer is competent to lift the vehicle safely and correctly.

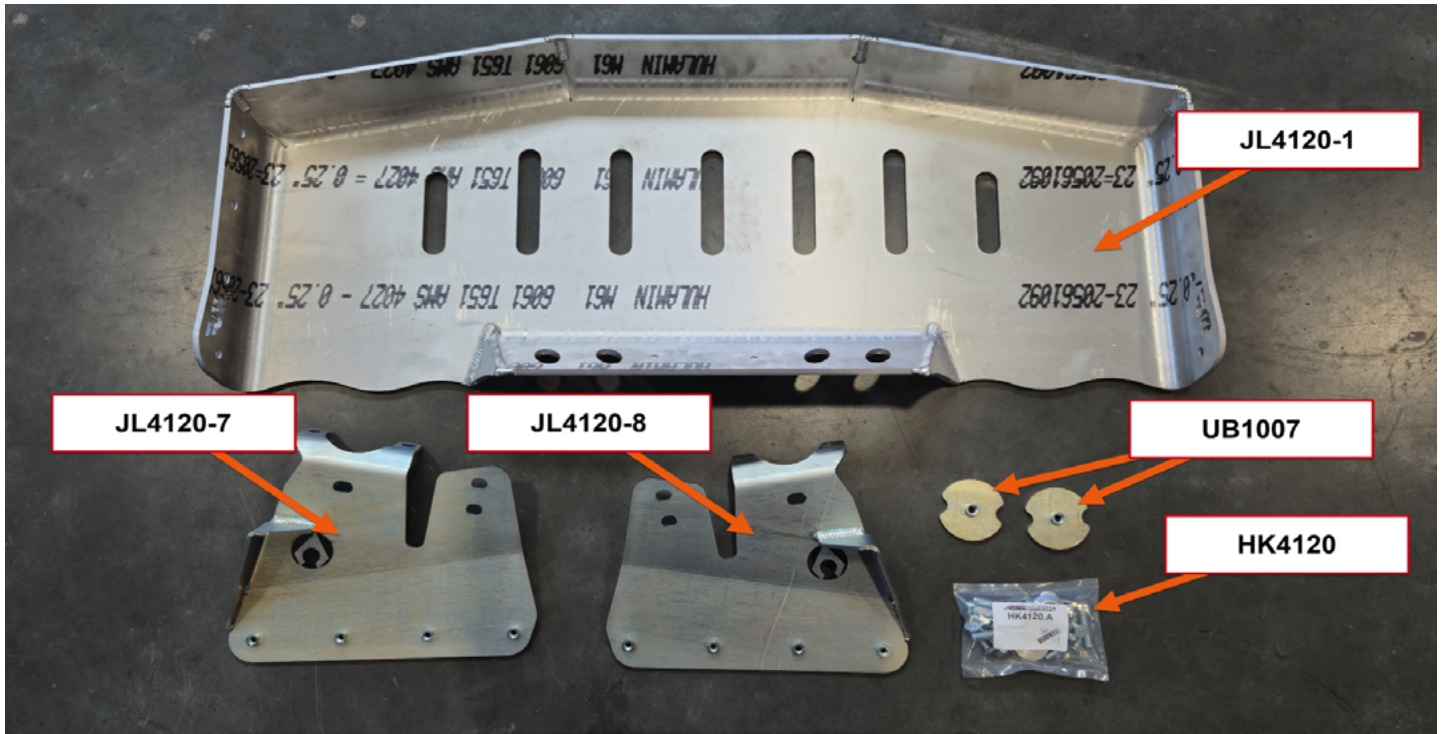
Modified vehicles won't perform identically to their stock counterparts. It's incumbent upon the vehicle owner to understand the alterations such modifications will bring to the vehicle's driving dynamics. These might encompass (but aren't limited to): changes in handling, braking, rollover angle, and potential incompatibilities with the factory-installed anti-lock braking systems, stability control systems, or traction control systems.

## SPECIAL NOTES

- Unless otherwise noted, all hardware should be **LOOSELY** tightened by hand until the very end of installation when all components are attached.

## JL4120 PARTS BILL OF MATERIALS

Please confirm you have all the listed parts below **BEFORE** beginning your installation. If any parts are damaged or missing, **KEEP ALL ORIGINAL BOXES and PACKAGING** and contact us.



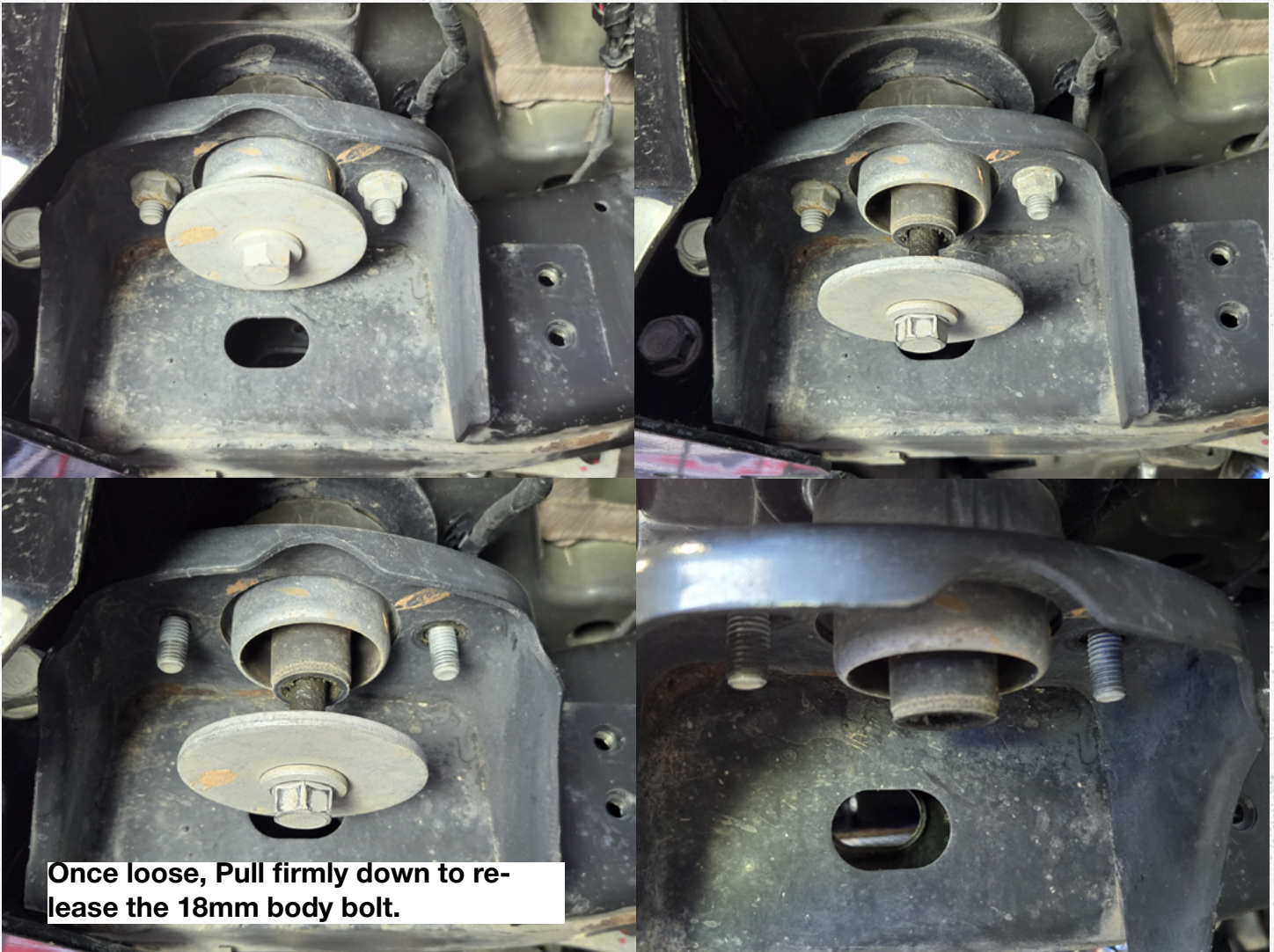
**NOTE:** The part numbers indicated above end in a “.” and “letter” which indicate the revision number for the part. The etched part number on your physical parts do not need to match the above drawing revision exactly.

## HK4120.B & JL4120 BILL OF MATERIALS

PART NUMBER	DESCRIPTION	QTY.
HK4120.B	HARDWARE KIT, MAGNAFLOW MUFFLER SKID MOUNT, JEEP JL 392 WRANGLER	1
UB1007-ZP.A	3/8", LARGE ROUND SINGLE NUT PLATE, UNIVERSAL	2
JL4120-1-WP.B	RIVET LOGO, MUFFLER SKID, JEEP WRANGLER 392 REAR MAGNAFLOW MUFFLER SKID	1
JL4120-7-ZP.B	BRACKET, DVR SIDE REAR MOST, JEEP WRANGLER 392 REAR MAGNAFLOW MUFFLER SKID KIT	1
JL4120-8-ZP.B	BRACKET, PSG SIDE REAR MOST, JEEP WRANGLER 392 REAR MAGNAFLOW MUFFLER SKID KIT	1

ITEM NO.	PART NUMBER	DESCRIPTION	QTY.
1	HW0118	3/8 in-16 x 4.0 in Counter Sink Allen Head Bolt - ZINC PLATED	2
2	HW0147	.375" Countersunk Aluminum Washer	2
3	HW0136	M10 - 1.5 x 40mm long Hex Head Bolt	4
4	HW0137	M10 washer	4
5	HW0134	5/16"-18 x .750" Long Flat Head Screw Zinc Coated	8

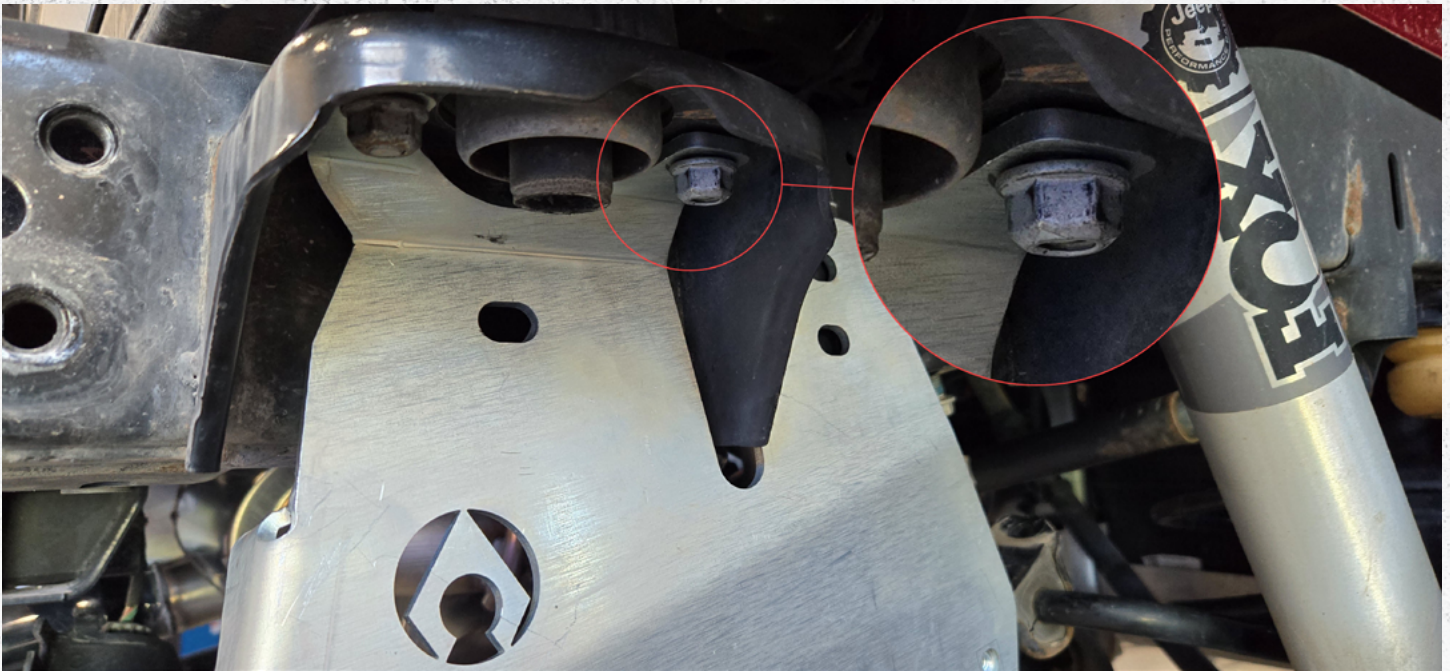
## ASSEMBLY INSTRUCTIONAL GUIDE



Step 1:

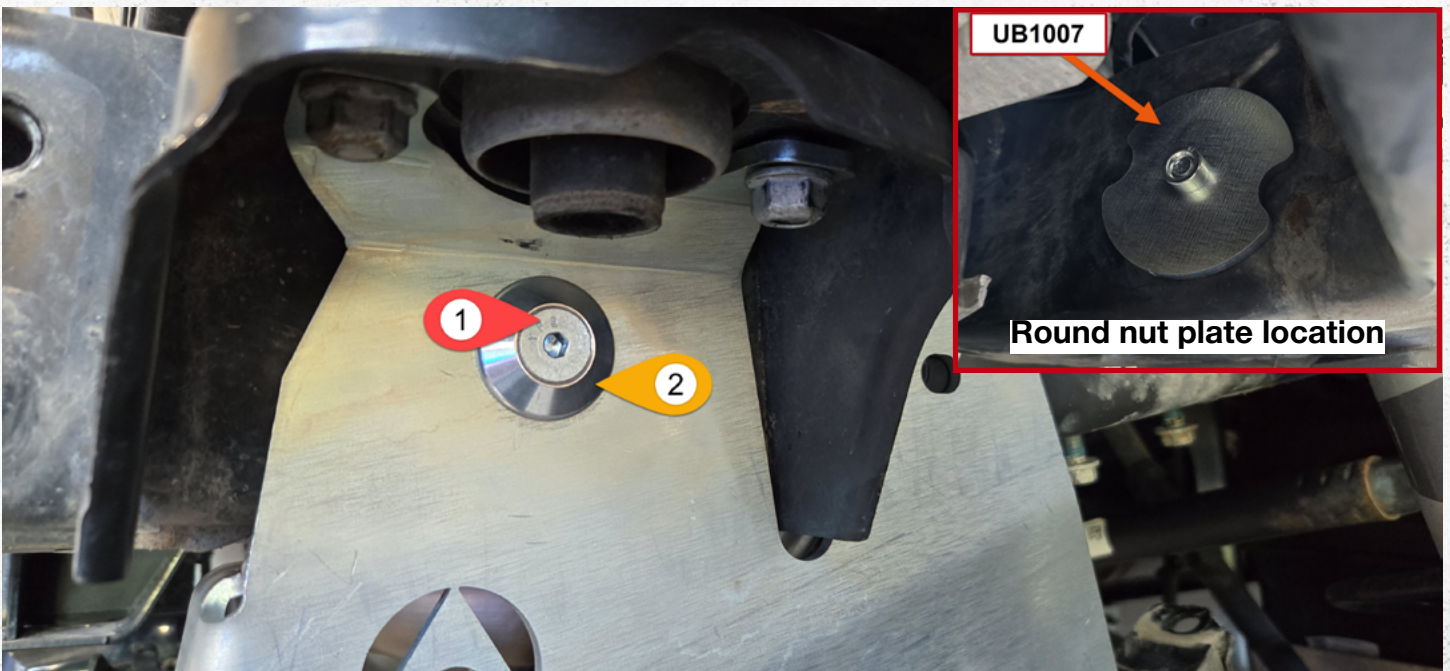
Locate and remove the rear body mount bolts to install **JL4120-7** & **JL4120-8** using a 18mm and 16mm socket with ratchet.

**Important!! Use a breaker bar to loosen and tighten the 18mm body bolt to void breaking the keep nut inside the vehicle. Do NOT use power tools on this bolt.** Repeat this process on both sides.



Step 2A.

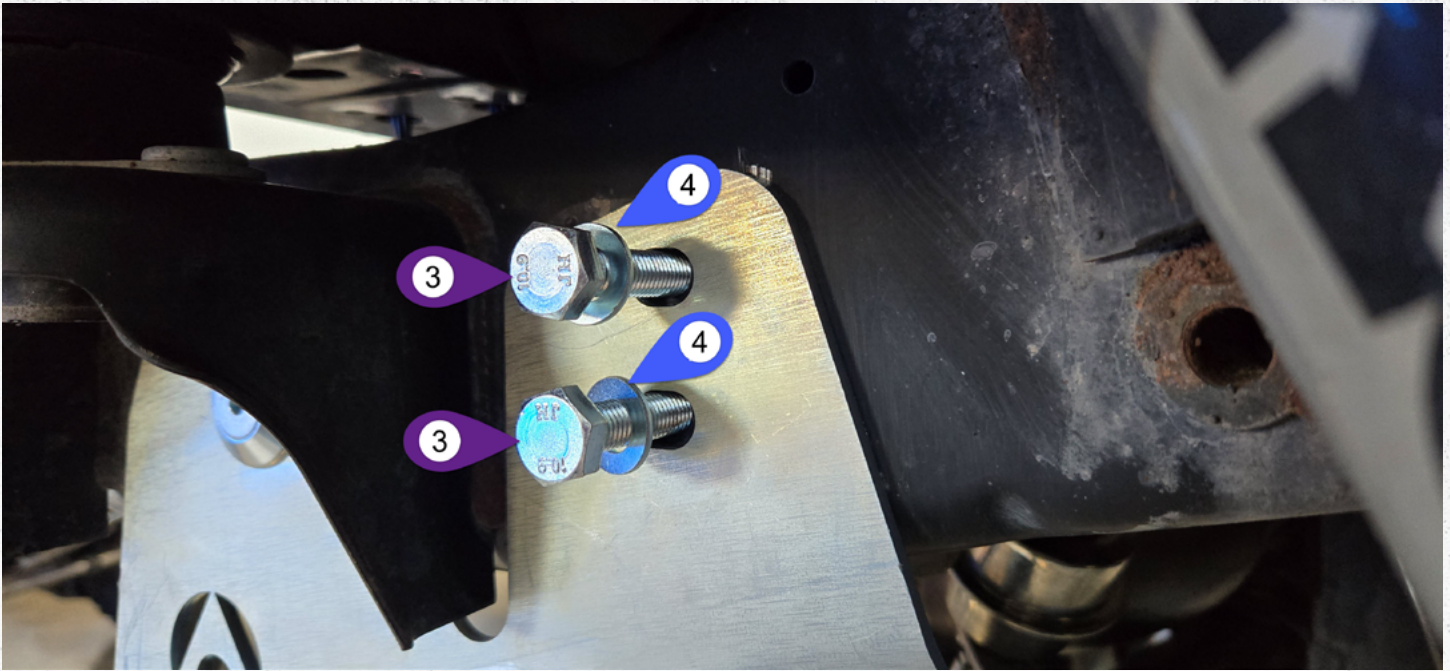
Loosely install the bracket **JL4120-7** & **JL4120-8** using the factory nuts using a 16mm socket.



Step 2B.

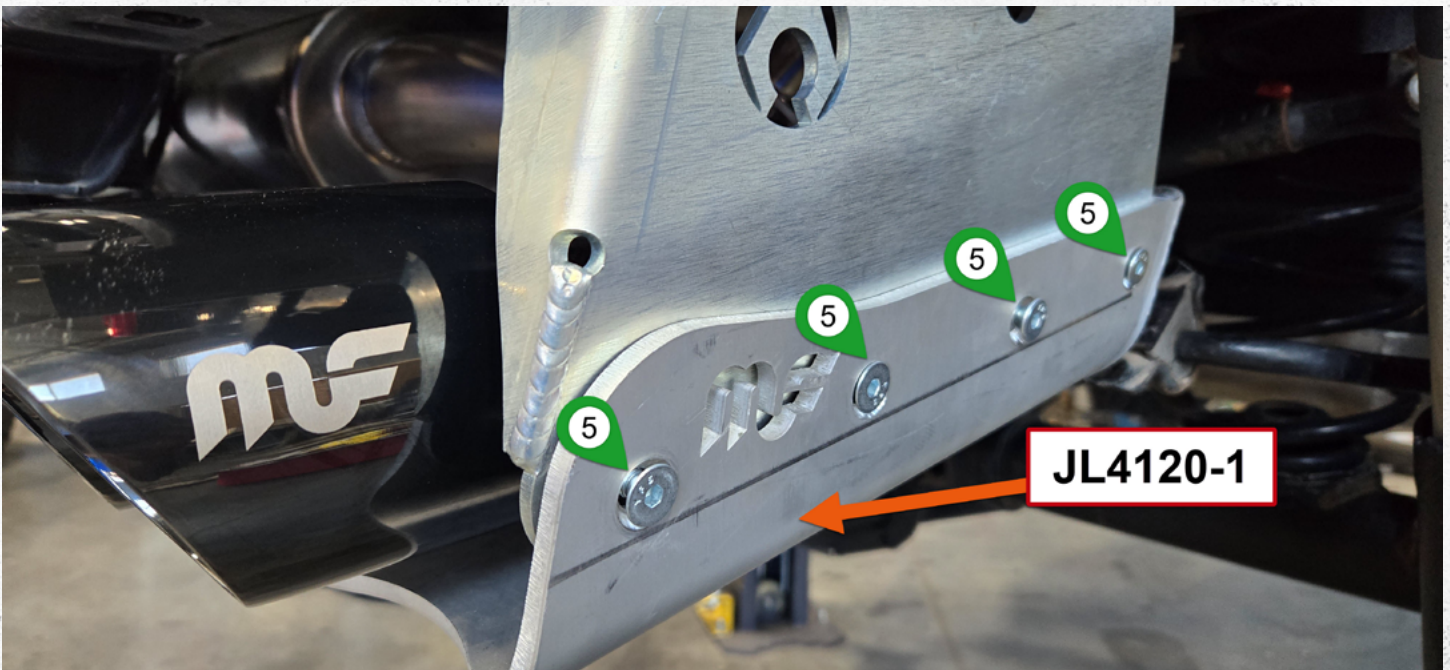
With the 18mm bolt still removed, loosely install the provided hardware through bracket **JL4120-7** & **JL4120-8** using the **1** 4" countersunk allen head bolt, **2** countersunk washer, and the round single nut plate **UB1007**.

**This step is the same for the driver and passenger side of the vehicle.**



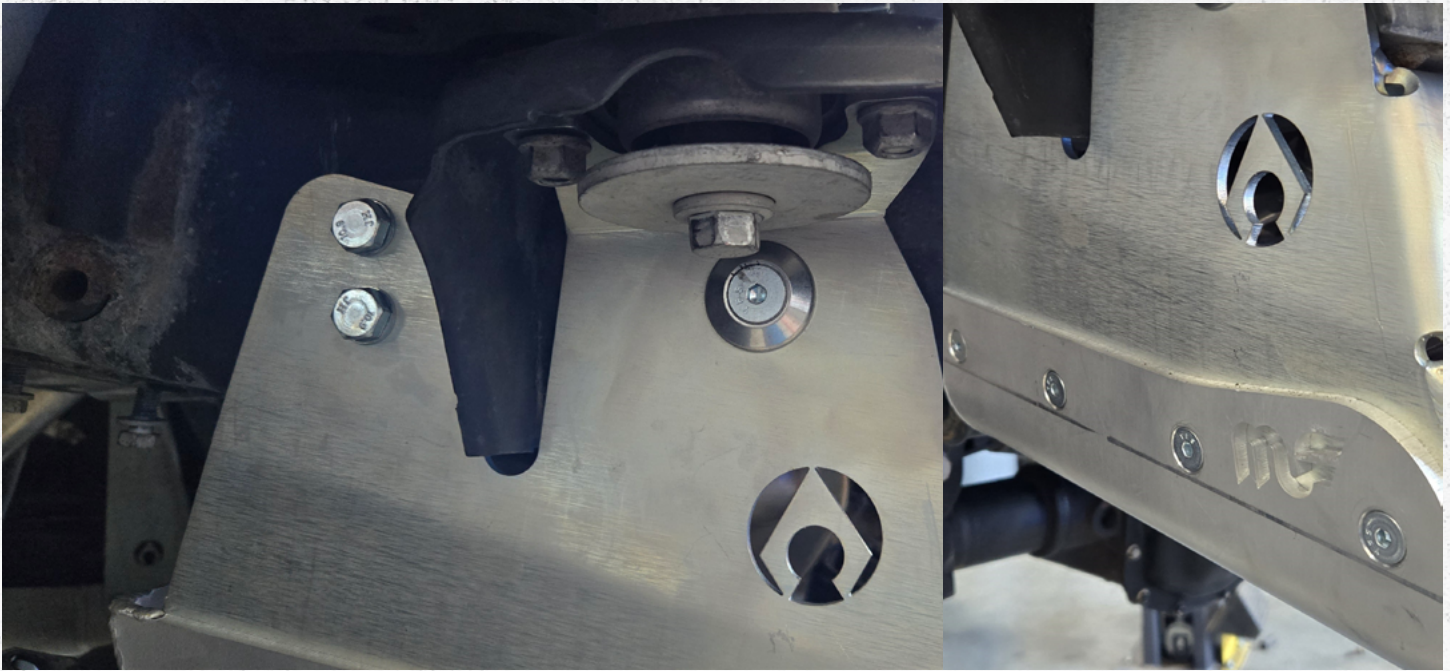
Step 2C.

Loosely install provided hardware **3** (2) M10 x 40mm hex bolt and **4** (2) M10 washer into the factory holes on the driver and passenger side brackets.



Step 3.

Using the (8) provided **5** 5/16" x .750" counter sunk bolt's, loosely secure the **JL4120-1** Magnaflow Muffler skid plate to the loosely installed **JL4120-7** & **JL4120-8** brackets.



Step 4A.

Before installing the 18mm body bolt, tighten all bolts and ensure proper fitment. If you are unsure if the fitment is correct or have any questions, please contact us at

Step 4B.

Press the 18mm body bolt into the keeper nut and tighten with a ratchet. **Do not use power tools on this body bolt.**

**NOTE: if you are installing the muffler skid as part of a complete belly pan kit, tighten this hardware along with the belly pan installation process.**

**Verify ALL previously installed hardware is tight / torqued to specifications.**



## CONCLUSION

Congratulations on finishing the installation for your Artec Industries Magnaflow muffler Skid. Before driving your vehicle, inspect all bolts to ensure they are properly tightened.

If you used a vehicle lift, take proper care to ensure you lower your vehicle safely.

Now take your vehicle out and enjoy the outdoors in confidence.

## MAINTENANCE / CARE

- After 500 miles, inspect all components and hardware to ensure they are properly fastened.
- If driving during the winter where salt is used on the roads, thoroughly and frequently wash underside of vehicle to prevent salt based corrosion.
- If removal of skid panels is required for vehicle maintenance, and bolts will not loosen, tap the bolt heads with a small sledge hammer using moderate force. This will allow the threads to loosen.
- Spray wax or similar products can be used to create a protective barrier on raw metals to protect against long term corrosion.