



## PART # JL4119

### JL 392 MAGNAFLOW RESI/ EXHAUST SKID INSTALLATION INSTRUCTIONS



#### ESTIMATED INSTALLATION TIME

**1 to 2 hours**

#### REQUIRED SKILLS

- General Mechanics Skills

#### REQUIRED TOOLS & SUPPLIES

- 19mm Socket
- 18mm Socket
- 14MM Socket
- 7/32 inch Allen Wrench
- Ratchet
- Breaker Bar (optional)

#### NOTES:

- Component appearance in instructions may vary from those received
- **This kit requires the fuel tank to be lowered from the vehicle to install components.**
- It is recommended to complete this install on a quarter of a tank or less.

**COMPATIBLE WITH: MAGNAFLOW 2021-2023 STREET & ROCK  
CRAWLER SERIES CAT-BACK PERFORMANCE EXHAUST SYSTEM**

**SKU #19598 & SKU #19582**

## WARNING MESSAGES

This product demands a basic understanding of mechanical procedures and should only be installed by individuals proficient with mechanic's tools. Any tasks involving welding or cutting parts should be performed by trained professionals. Artec Industries disclaims responsibility for mishaps arising from improper installation, or any damage or accidents resulting from cutting or welding tasks. Exercise caution and seek professional help as required.

## SAFETY

1. We've furnished a written installation guide, along with relevant details, to aid you in making safety-conscious decisions.
2. While these guidelines will highlight potential risks, it's crucial to exercise your personal judgment when performing any required steps.
3. Before initiating any tasks, it's essential to conduct a job safety analysis to identify specific hazards in your situation and take measures to eliminate or protect against them.
4. Before commencing the installation of this product, make sure you familiarize yourself with and fully understand all safety warnings and guidelines.

## DISCLAIMERS

All Artec Industries products should be installed by a competent, certified individual following the intended installation instructions for each product. Incorrect installations not only nullify any warranties but could also lead to product damage or even damage to the vehicle it's installed on. Prior to installation, carefully read all provided instructions or manuals, and watch any associated videos. For any doubts or queries, reach out to Artec Industries before beginning the installation process.

Many products necessitate lifting and supporting the vehicle off the ground. It is the installer's responsibility to ensure this can be done safely and that the right equipment is at hand to carry out the installation. Artec Industries installation instructions presume the installer is competent to lift the vehicle safely and correctly.

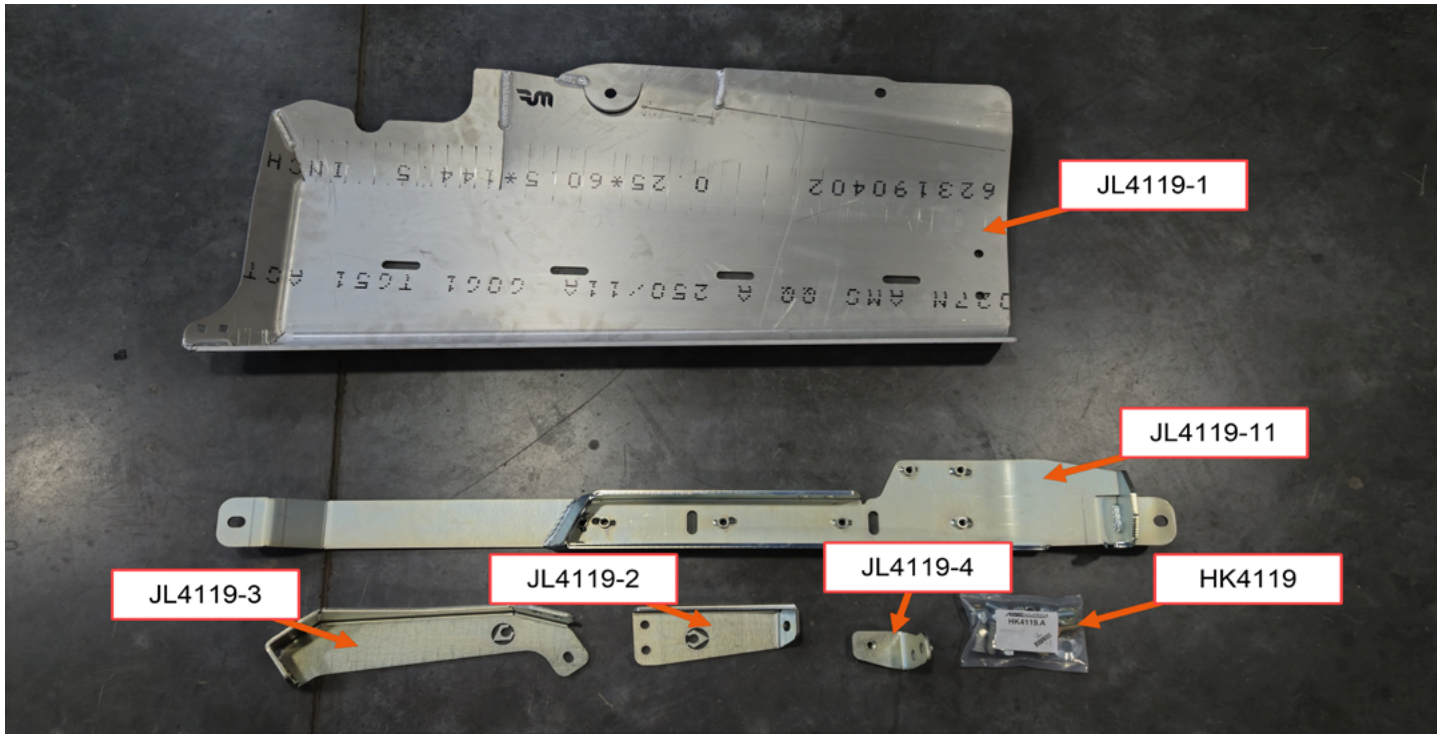
Modified vehicles won't perform identically to their stock counterparts. It's incumbent upon the vehicle owner to understand the alterations such modifications will bring to the vehicle's driving dynamics. These might encompass (but aren't limited to): changes in handling, braking, rollover angle, and potential incompatibilities with the factory-installed anti-lock braking systems, stability control systems, or traction control systems.

## SPECIAL NOTES

- Unless otherwise noted, all hardware should be **LOOSELY** tightened by hand until the very end of installation when all components are attached.
- This kit requires the removal or lowering of the vehicle's fuel tank. If uncomfortable with this installation process, please seek a shop for installation.
- Recommended install with 1/4 tank of fuel or less.

## JL4119 PARTS BILL OF MATERIALS

Please confirm you have all the listed parts below **BEFORE** beginning your installation. If any parts are damaged or missing, **KEEP ALL ORIGINAL BOXES and PACKAGING** and contact us.



**NOTE:** The part numbers indicated above end in a “.” and “letter” which indicate the revision number for the part. The etched part number on your physical parts do not need to match the above drawing revision exactly.

## HK4119& JL4119 BILL OF MATERIALS

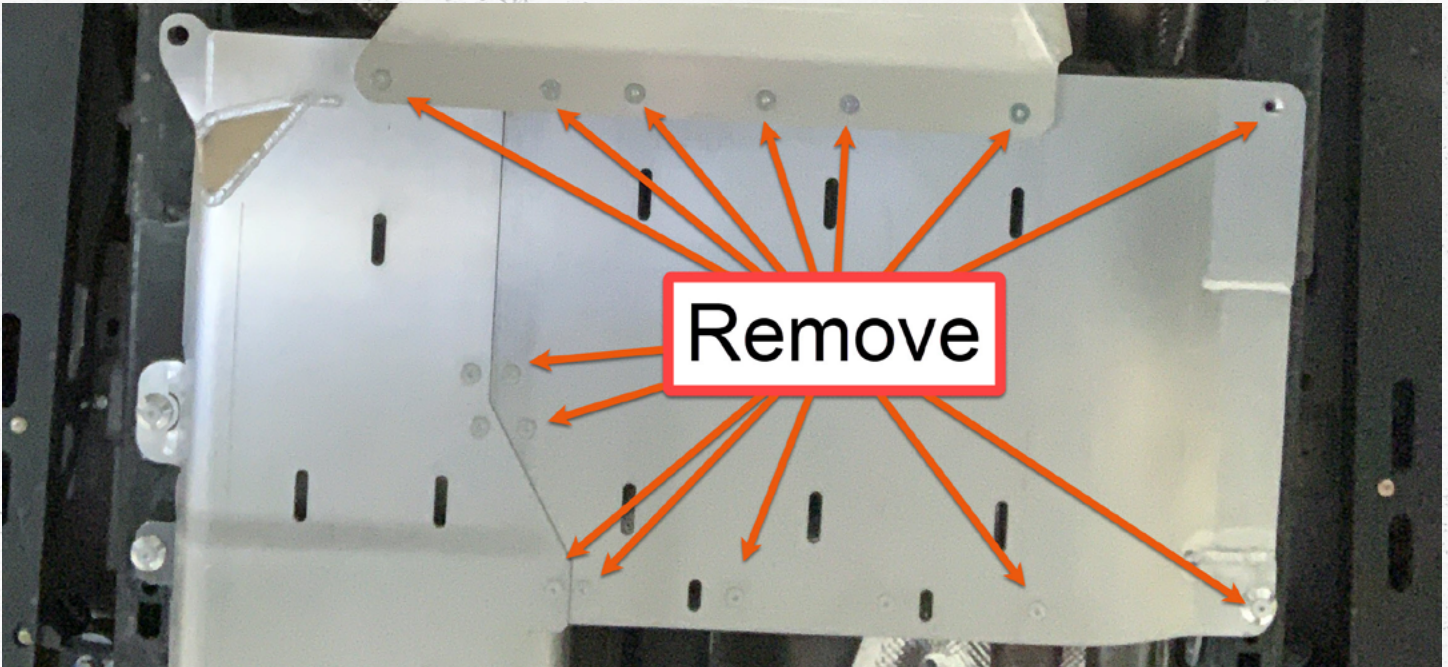
HK4119.A	HARDWARE KIT, MAGNAFLOW DVR SIDE EXHAUST SKID, JEEP JL WRANGLER 392	1
JL4119-1.B	PLATE, MAGNAFLOW DVR SIDE EXHAUST SKID, JEEP JL WRANGLER	1
JL4119-2-Z.B	BRACKET, MAGNAFLOW MIDDLE DVR SIDE EXHAUST SKID, JEEP JL WRANGLER	1
JL4119-3-Z.B	BRACKET, MAGNAFLOW REAR DVR SIDE EXHAUST SKID, JEEP JL WRANGLER	1
JL4119-4-ZP.A	BRACKET, MAGNAFLOW FORWARD DVR SIDE EXHAUST SKID, JEEP JL WRANGLER	1
JL4119-11-WZP.A	CROSSMEMBER, MAIN TRANSFERCASE for MAGNAFLOW, JEEP JL WRANGLER	1

ITEM NO.	PART NUMBER	DESCRIPTION	QTY.
1	HW0147	.375" Countersunk Aluminum Washer	2
2	HW0141	CUSTOM M12 - 1.5 x 40mm long flat head	2
3	HW0061	3/8 x 1 flat head bolt	3
4	HW0158	M12 Flat Washer Clear Zinc	2
5	HW0156	M12 x 1.5MM x 30MM Hex Head Cap Screw Clear Zinc	2
6	HW0058	3/8"-16 x 1.0" Long Grade 8 Hex Head Cap Screw Yellow Zinc	2
7	HW0059	3/8" Flat Washer Type 1 Yellow Zinc	7
8	HW0019	3/8"-16 Nylock Insert Hex Nut Clear Zinc	5
9	HW0105	3/8 x 1 in carriage bolt	5

## ASSEMBLY INSTRUCTIONAL GUIDE

**IMPORTANT:** This kit requires the fuel tank to be lowered from the vehicle to install Components. It is recommended to complete this install on a quarter of a tank or less.

If this process cannot be completed by the user, please see a shop for install.



Note: This installation guide is upgrading an existing Artec bellypan system, if you have any questions regarding the installation on your vehicle please contact us at

Step 1A:

Remove the transercase skid plate by removing the countersunk bolts using a 7/32 Allen wrench. This will give you access to the cross-member that is being upgraded to **JL4119-11**.

Removing this component will allow you to install the new cross-member and **JL4119-1** exaush/ resignator skid plate portion of this bellypan system.

## ASSEMBLY INSTRUCTIONAL GUIDE

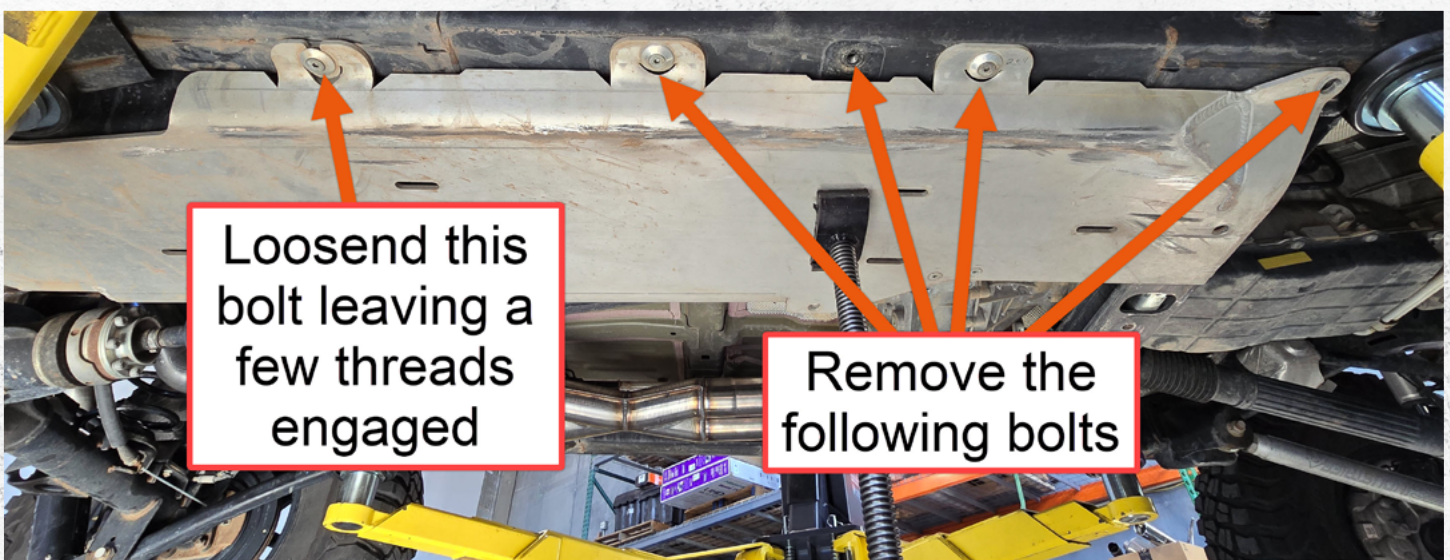
**IMPORTANT:** This kit requires the fuel tank to be lowered from the vehicle to install Components. It is recommended to complete this install on a quarter of a tank or less.

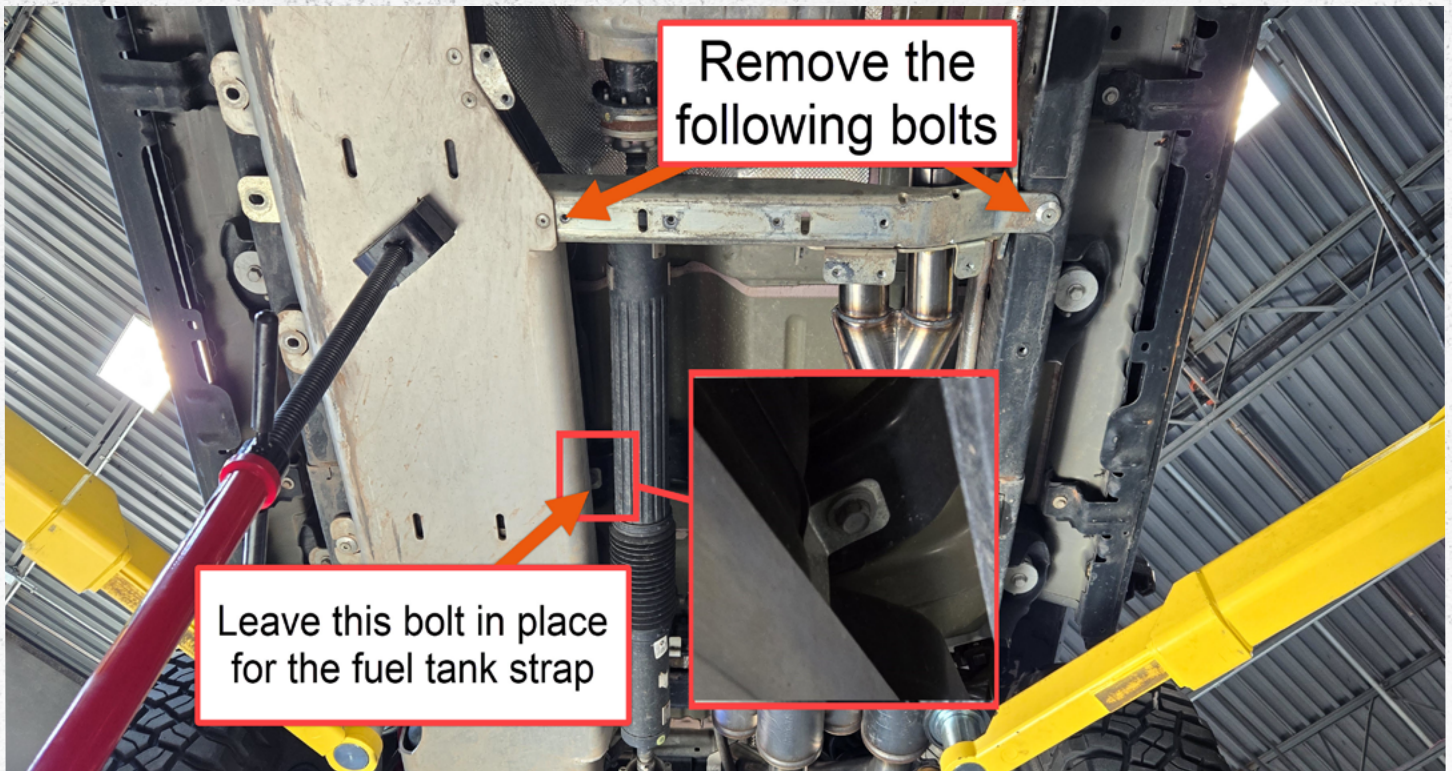
If this process cannot be completed by the user, please see a shop for install.



Step 1B:

With the vehicle parked and secured, support the fuel tank with a jack, bucket or any means to support the fuel tank when removing hardware.





Step 2B.

Remove the bolts as specified in the above image. Remove the bolt shown in the bottom left image.

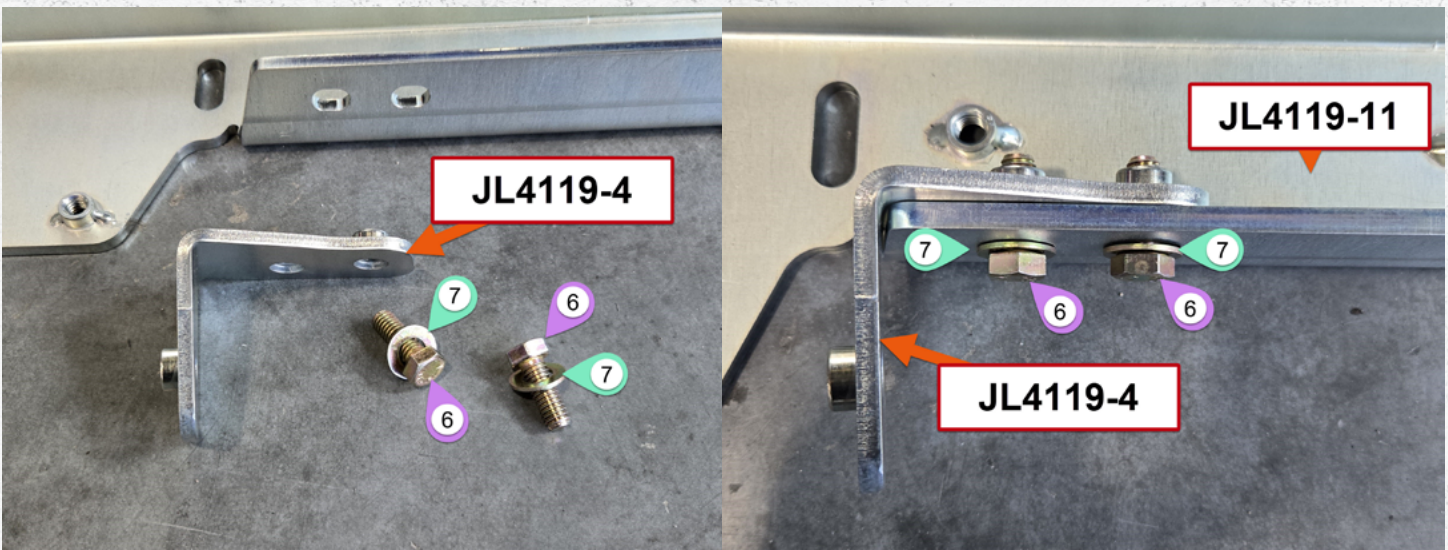


Step 2C.

After removing the bolts in steps 2A & 2B lower the fuel tank until the cross-member is free.

Note: Lifting up on the fuel tank will help free the old cross-member.

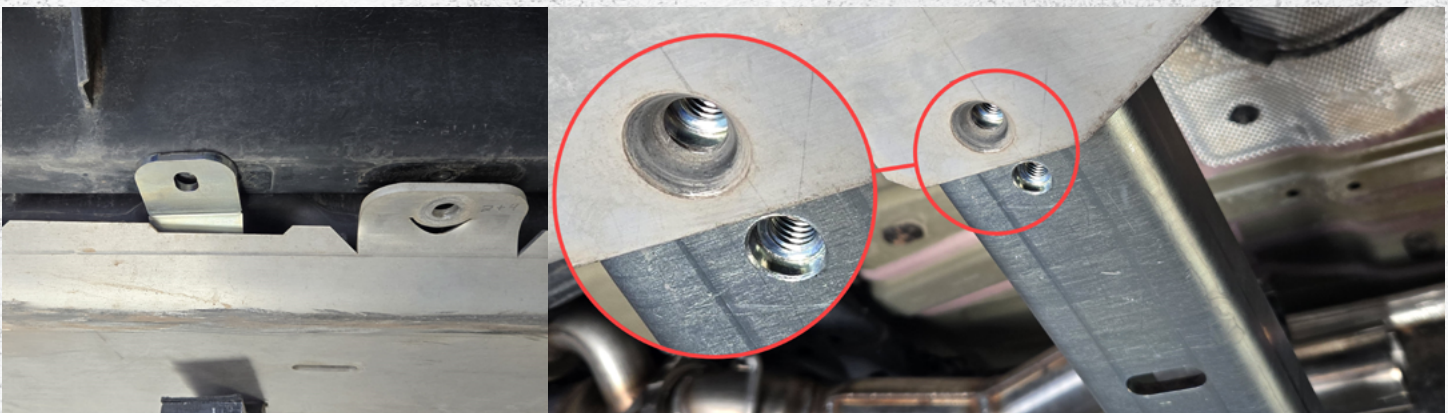


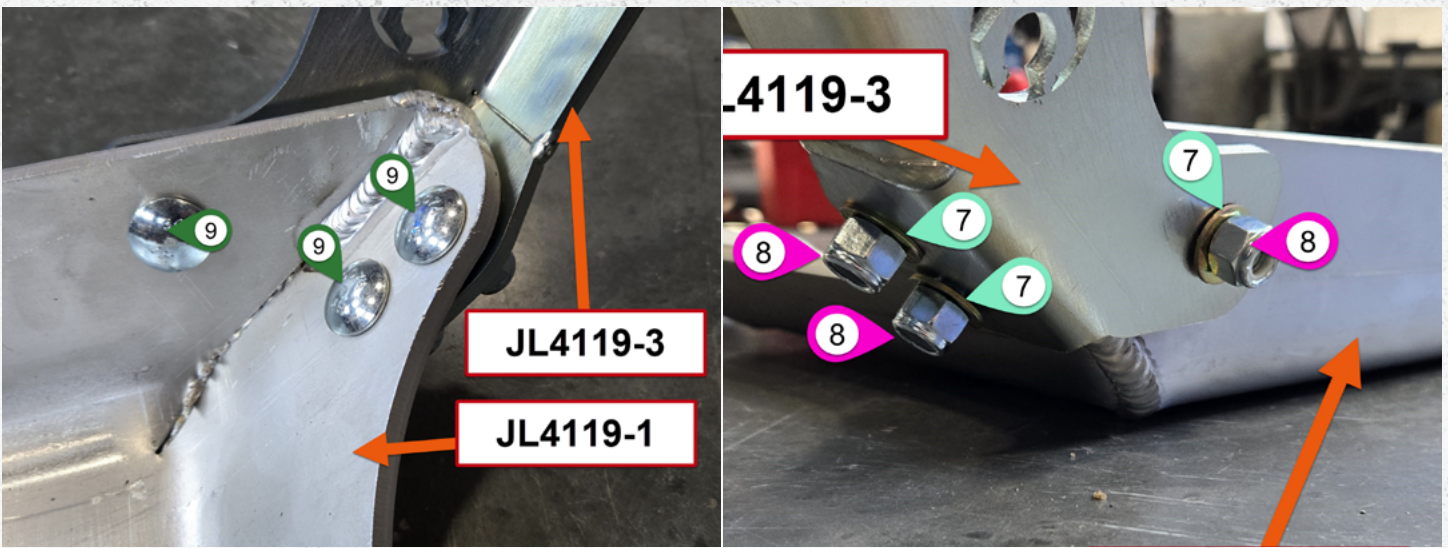


Step 3A.  
Loosely install two 3/8 x1" hex bolts with 3/8 zinc washer to secure **JL4119-4** to **JL4119-11**.

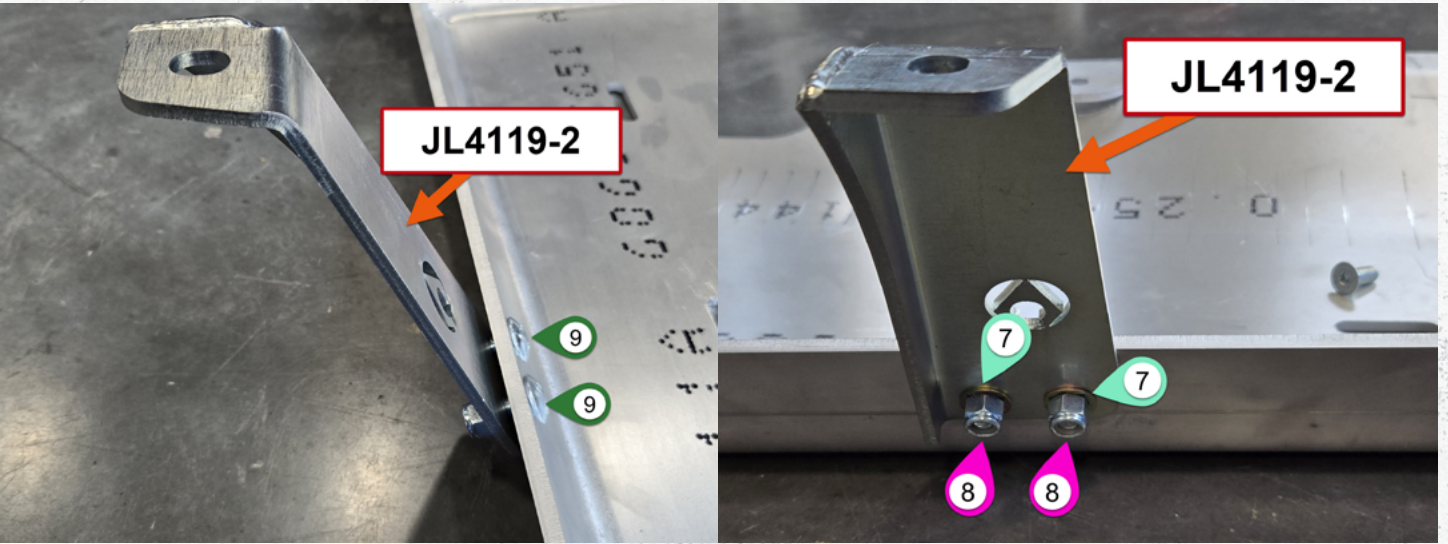


Step 3B.  
Insert the new cross-member **JL4119-11** underneath the tank similar to the removal of the old cross-member.

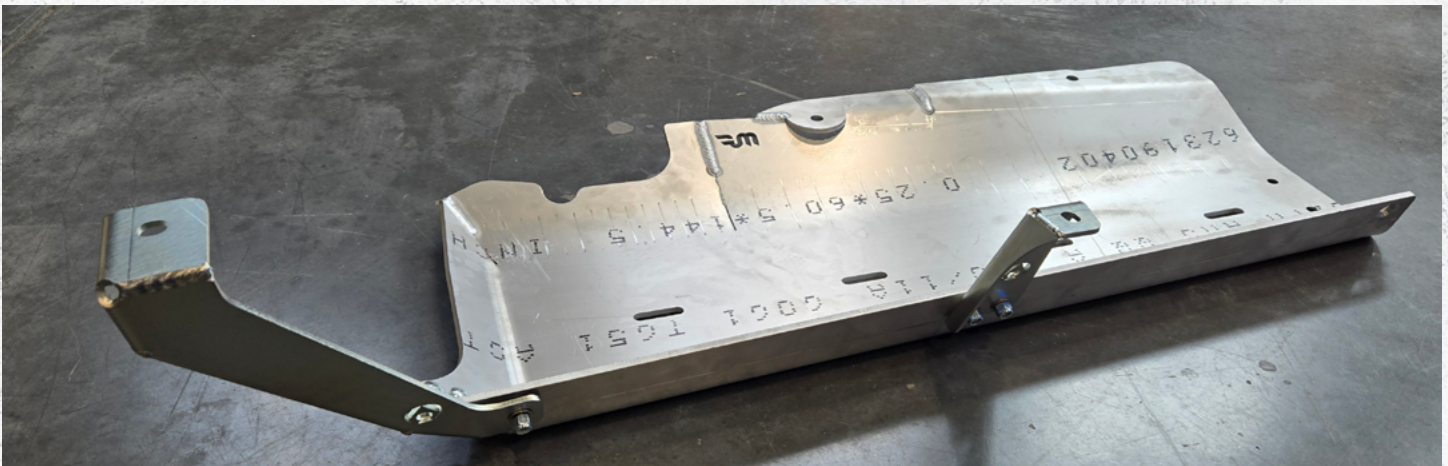




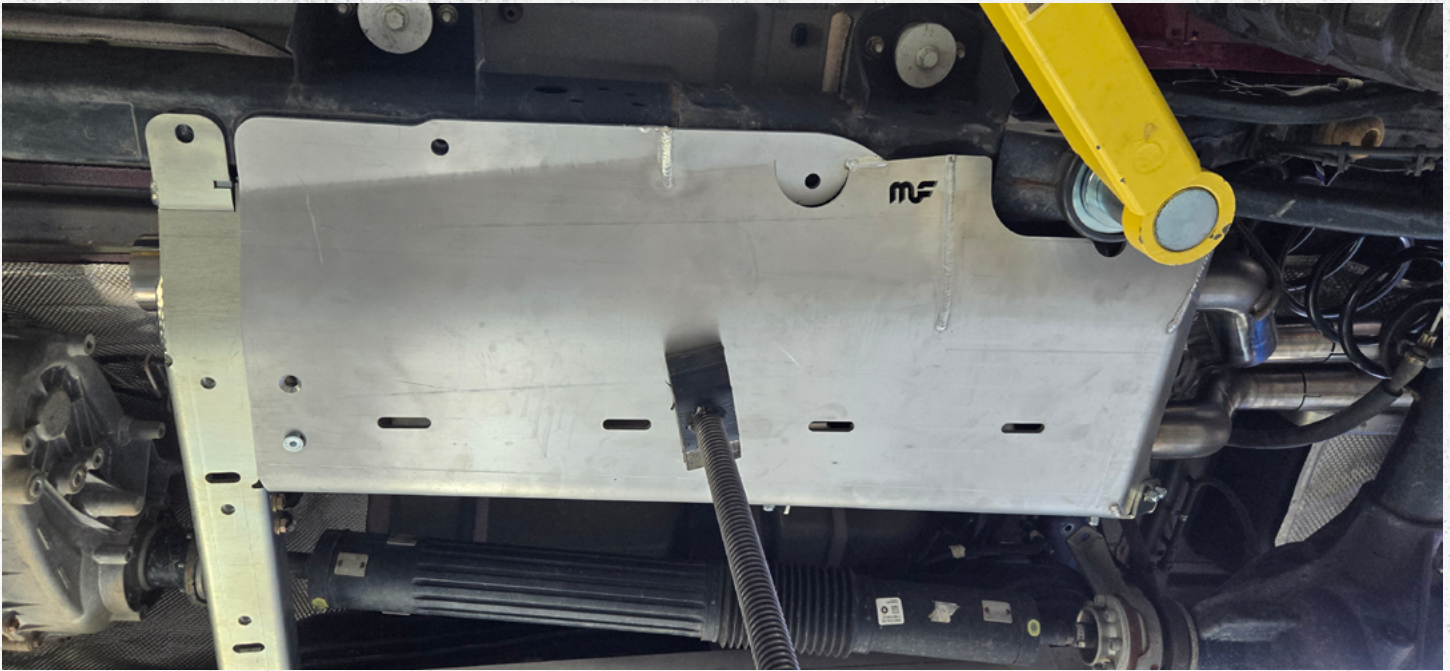
Step 4A.  
 Place three 3/8 carriage bolts into **JL4119-1** and secure it with three 3/8 nylok nut & three 3/8 zink washer to loosely secure **JL4119-3** to **JL4119-1**.



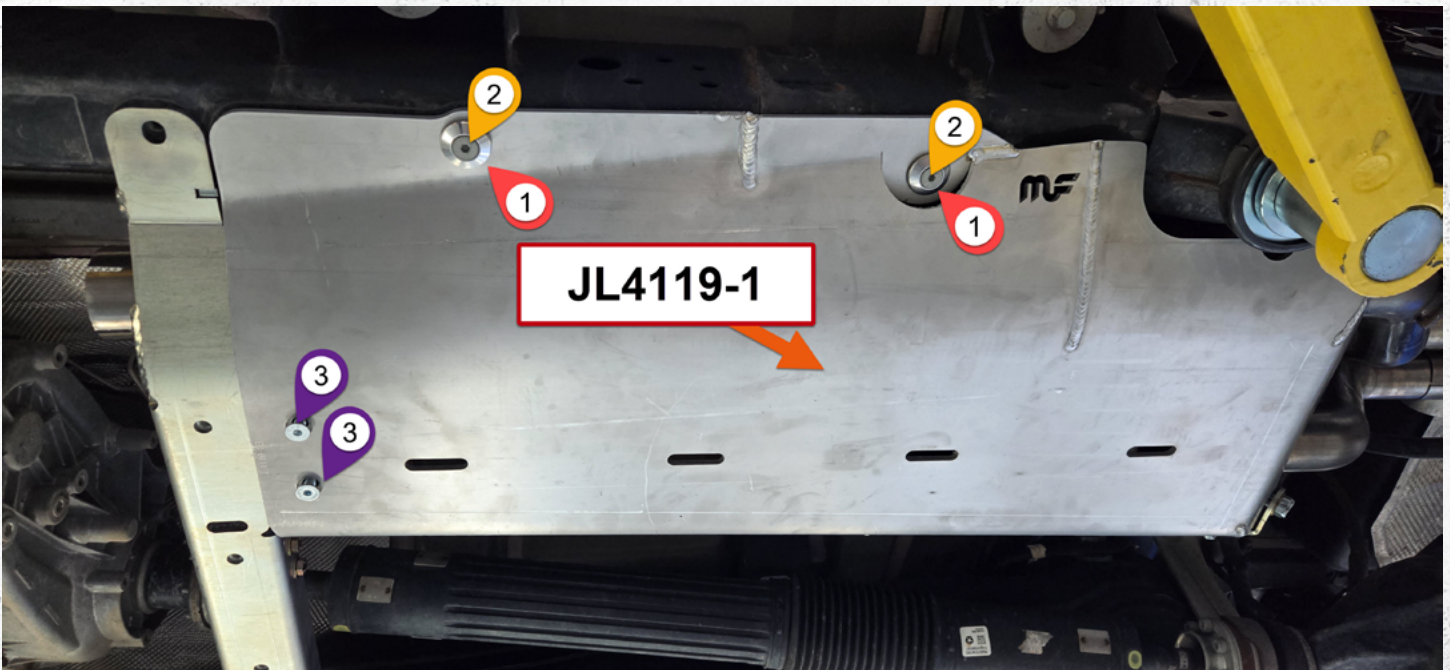
Step 4B.  
 Place two 3/8 carriage bolts into **JL4119-1** and loosely thread two 3/8 nylok nut with two 3/8 zink washer to secure **JL4119-2** to **JL4119-1**.







Step 5A.  
Lift the assembled skid plate into place and align it with the factory bolt holes.



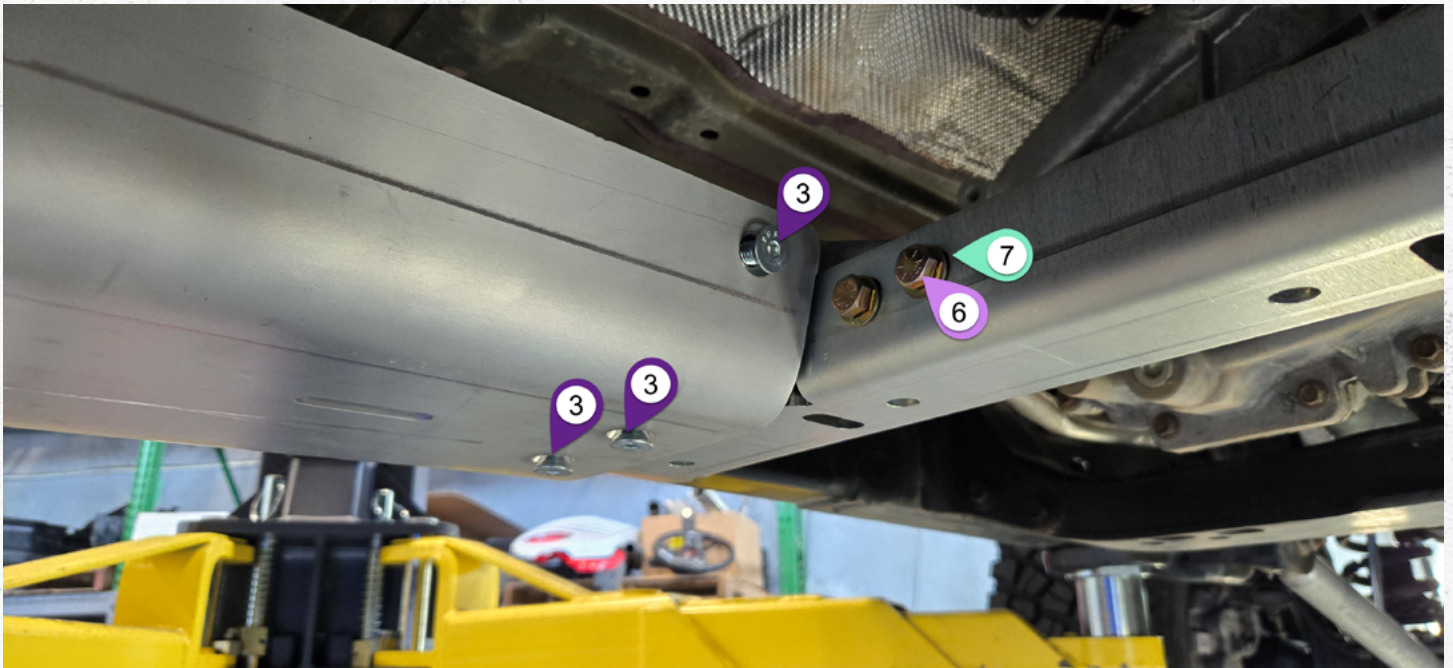
Step 5B.  
Using the key below, insert the provided hardware **Loosely** to secure **JL419-1** to **JL419-11** & the frame.

ITEM NO.	PART NUMBER	DESCRIPTION	QTY.
1	HW0147	.375" Countersunk Aluminum Washer	2
2	HW0141	CUSTOM M12 - 1.5 x 40mm long flat head	2
3	HW0061	3/8 x 1 flat head bolt	3



Step 5C.

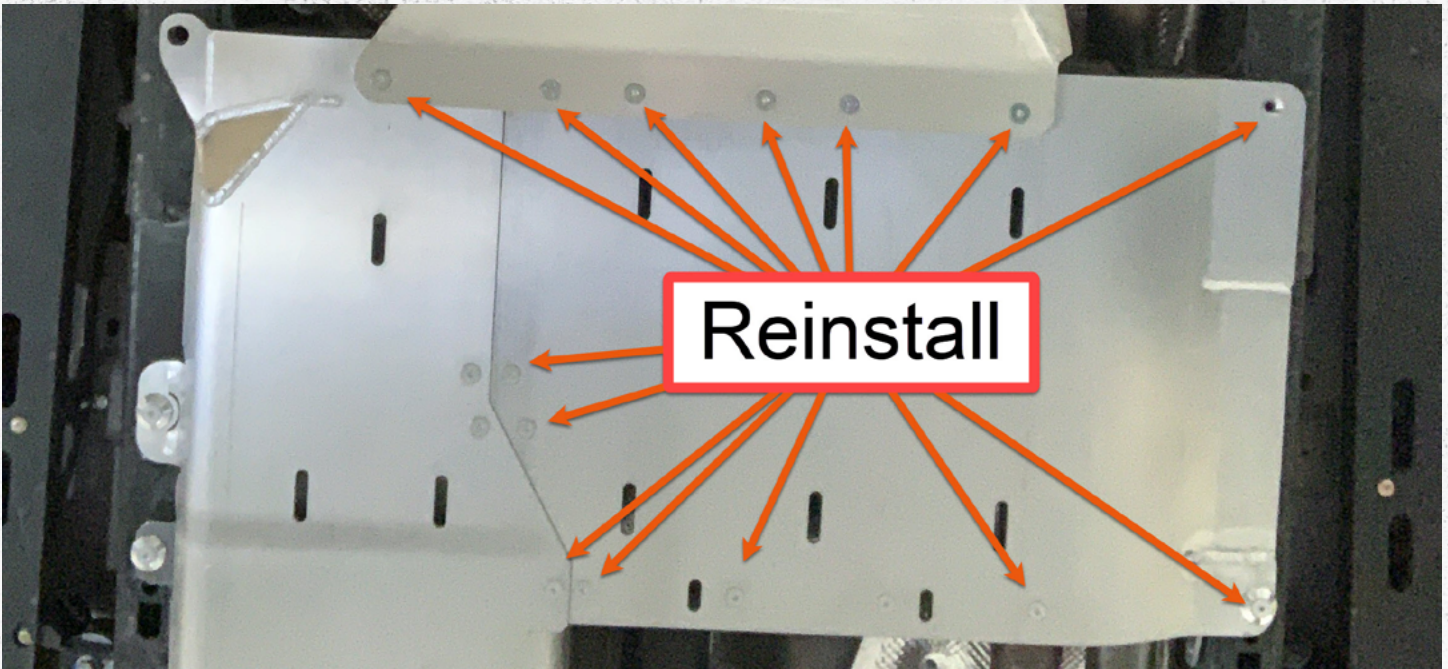
Loosely install the skid plate using two m12 x 30mm bolts with two m12 flat washers to secure **JL4119-2 & JL4119-3** to the factory bolt hole locations.



Step 5D.

Loosely install the three 3/8 x 1" countersunk bolts & two 3/8 x 1" hex bolts with 3/8 zinc washer into **JL4119-1 & JL4119-11**

**Note: The bottom two countersunk bolts were installed in step 5B**



Step 6:  
Reinstall the transercase skid plate using the existing countersunk bolts using a 7/32 Allen wrench. This existing transercase skidplate will fit the new **JL4119-11** crossmember and the **JL4119-1** exaust/ resignator skid plate portion of this bellypan system.



Step 7.  
Tighten all of the new hardware supplied with the kit and any hardware used to previously hold the fuel tank.

Ensure proper fitment of all components. If you are unsure if the fitment is correct or have any questions, please contact us at

**NOTE: if you are installing the exhaust skid as part of a complete belly pan kit, tighten this hardware along with the belly pan installation process.**



## **Verify ALL previously installed hardware is tight / torqued to specifications.**

### **CONCLUSION**

Congratulations on finishing the installation for your Artec Industries Magnaflow muffler Skid. Before driving your vehicle, inspect all bolts to ensure they are properly tightened.

If you used a vehicle lift, take proper care to ensure you lower your vehicle safely.

Now take your vehicle out and enjoy the outdoors in confidence.

### **MAINTENANCE / CARE**

- After 500 miles, inspect all components and hardware to ensure they are properly fastened.
- If driving during the winter where salt is used on the roads, thoroughly and frequently wash under-side of vehicle to prevent salt based corrosion.
- If removal of skid panels is required for vehicle maintenance, and bolts will not loosen, tap the bolt heads with a small sledge hammer using moderate force. This will allow the threads to loosen.
- Spray wax or similar products can be used to create a protective barrier on raw metals to protect against long term corrosion.