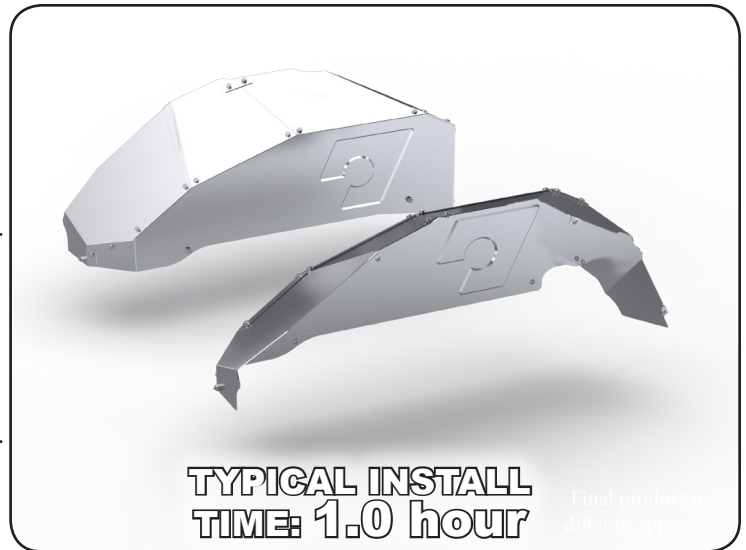
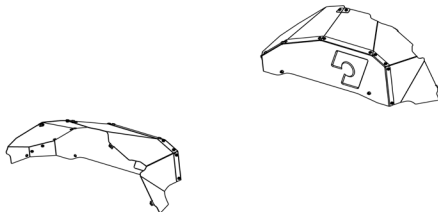


ARTEC INDUSTRIES JK ALUMINUM REAR INNER FENDERS

Thank you for your purchase of our rear JK inner fenders. If you have any questions that are not answered in these instructions, please feel free to contact us directly at sales@artecindustries.com or 855-278-3299 and we will be happy to help you.

Bill of Materials JK2111

ITEM NO.	PART NUMBER	DESCRIPTION	QTY.
1	JK2111-1	JK Rear Inner Fender Driver Main Panel	1
2	JK2111-3	JK Rear Inner Fender Driver Rear Panel	1
3	JK2111-2	JK Rear Inner Fender Driver Front Panel	1
4	JK2111-5	JK Rear Inner Fender Passenger Main Panel	1
5	JK2111-4	JK Rear Inner Fender Passenger Front Panel	1
6	JK2111-4	JK Rear Inner Fender Driver Top Brace	1
7	JK2111-8	JK Rear Inner Fender Passenger Top Brace	1
8	JK2111-7	JK Rear Inner Fender Passenger Rear Panel	1
9	HW0074	1/4"-20 Zinc Coated Steel Press Nut 0.047" Panel Thickness	28
10	HW0093	1/4"-20 X .3125" Button Head Socket Cap Screw - ZINC	28
11	HW0092	1/4"-20 X 1/2" Button Head Socket Cap Screw Zinc Plated	12
12	HW0018	1/4"-20 Nylon Insert Hex Lock Nut Zinc	12



**TYPICAL INSTALL
TIME: 1.0 hour**

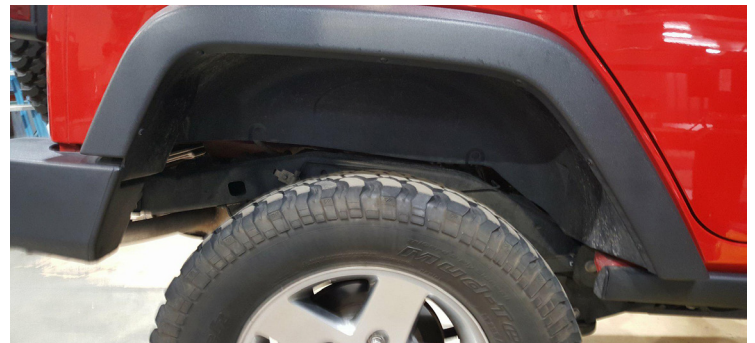
Final product may differ in appearance

REQUIRED TOOLS

- Power Drill
- 7/16" Wrench
- 5/32" Allen
- 1/4" & 1/8" Drill Bit
- 7/16" Socket

STEP 1. Unpack contents of shipment. Make sure that all of the parts required are included with your kit. If any items are missing, and packaging is damaged, report it to the shipping company driver, **KEEP ALL ORIGINAL PACKAGING & contact us.**

STEP 2. First start by parking the vehicle on level ground and secure the front tires with chocks. Next raise the rear tires off the ground, secure with jack stands and remove the rear tires. This will provide more room for accessing the fenderwell but is not necessary. Next we will remove the 7 plastic clips holding the inner fender in place. Just cut them and then push them out later. Once the clips are removed you can drill the 6 plastic rivets on the flare. This will allow you to remove the inner fender.



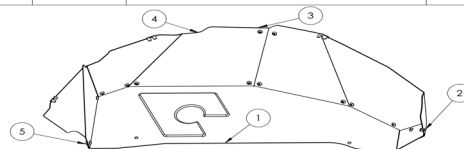
STEP 3. Now that you have removed the plastic inner fenders you can start removing the fender flares. Some of the clips can be accessed from the back side, pinch them and remove one by one. To completely remove the flare abruptly pull the flare and the remaining clips will pop out.

STEP 4. Cleanse the wheel well while you can access it, also pop out any clips that you cut in step 2. You are now ready to install your inner fenders. We find it easier to loosely assembly the inner fender assemblies on a work bench prior to installing them. Use the shorter bolts to assembly the inner fender. **DO NOT TIGHTEN**



PASSENGER SIDE SHOWN

ITEM NO.	PART NUMBER	DESCRIPTION	QTY.
1	JK2111-5	JK Rear Inner Fender Passenger Main Panel	1
2	JK2111-6	JK Rear Inner Fender Passenger Front Panel	1
3	JK2111-8	JK Rear Inner Fender Passenger Top Brace	1
4	JK2111-7	JK Rear Inner Fender Passenger Rear Panel	1
5	HW0093	1/4"-20 X .3125" Button Head Socket Cap Screw - ZINC	14

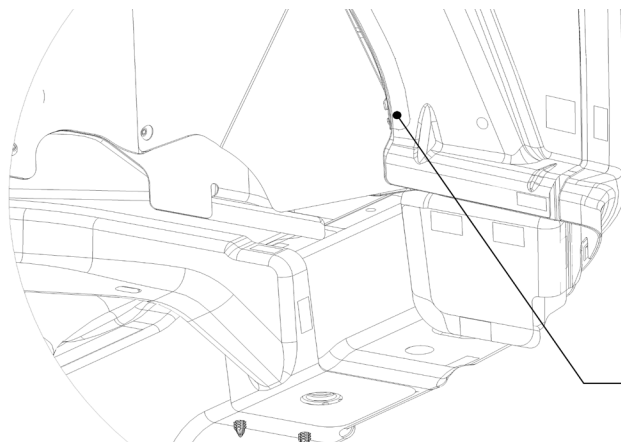


NOTE: THIS KIT INVOLVES VEHICLE MODIFICATION AND MECHANICAL SKILLS. IF YOU ARE NOT CONFIDENT IN YOUR SKILLS, CONTACT A PROFESSIONAL INSTALLER.

STEP 5. The inner fender assemblies can be inserted by first angling the back portion up and into the wheel well. Next pop the rest of the inner fender into the wheel well. Next install the hardware loosely using existing holes in the jeep.



STEP 6. The rear most mounting hole will require drilling to install the hardware. Some choose not use this hole to reduce install time. If you choose not to use this mounting hole the flare will not require removal. We like to use this hole to ensure there is no chance of rattling. Referencing from the back mounting position mark and drill the hole using a 1/4" drill bit. Finish by installing the bolt and nylock locking nut.



MARK AND DRILL
.250"

STEP 7. Start by tightening all the hardware, the short bolts that hold the assembly together we recommend using blue loc-tight to ensure these never vibrate loose. Next you can reinstall your fender flares to finish the installation.

**Artec Industries, LLC is not responsible or liable for improper installation of this kit. Use common sense when installing.

NOTE: THIS KIT INVOLVES VEHICLE MODIFICATION AND MECHANICAL SKILLS. IF YOU ARE NOT CONFIDENT IN YOUR SKILLS, CONTACT A PROFESSIONAL INSTALLER.