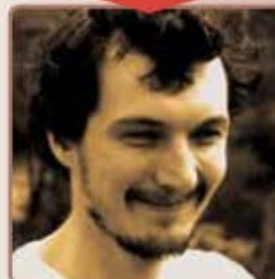


“You can’t improve an optimum result”



by Bob:
Kitesurfer
& Grower

| | Cultivation period In weeks | Light / Day In hours | COCO ml/ 10 litres | RHIZOTONIC ml/ 10 litres | CANNAZYM ml/ 10 litres | CANNABOOST ml/ 10 litres | PK 13/14 ml/ 10 litres | EC + in mS/cm | EC Total in mS/cm | |
|-------------------------|---|-------------------------|--------------------------|--------------------------------|------------------------------|--------------------------------|------------------------------|---------------------|-------------------------|---------|
| VEGETATIVE PHASE | | | | | | | | | | |
| GROWTH | Start / rooting (3 - 5 days) Make the substrate wet | <1 | 18 | 15-25 | 40 | - | - | - | 0.7-1.1 | 1.1-1.5 |
| | Vegetative phase I Plants develop in volume | 0-3 ¹ | 18 | 20-30 | 20 | 25 | - | - | 0.9-1.3 | 1.3-1.7 |
| | Vegetative phase II - Up to growth stagnation after fructification or appearance of the formation of flowers | 2-4 ² | 12 | 25-35 | 20 | 25 | 20 ⁵ | - | 1.1-1.5 | 1.5-1.9 |
| GENERATIVE PHASE | | | | | | | | | | |
| FLOWERING | Generative Period I - Flowers or fruits develop in length. Growth in height achieved | 2-3 | 12 | 30-40 | 5 | 25 | 20-40 | - | 1.4-1.8 | 1.8-2.2 |
| | Generative period II - Development of the volume (breadth) of flowers or fruit | 1 | 12 | 30-40 | 5 | 25 | 20-40 | 15 | 1.6-2.0 | 2.0-2.4 |
| | Generative Period III - Development of the mass (weight) of flowers or fruit | 2-3 | 12 | 20-30 | 5 | 25 | 20-40 | - | 1.0-1.4 | 1.4-1.8 |
| | Generative Period IV - Flowers or fruit ripening process | 1-2 | 10-12 ³ | - | - | 25-50 ⁴ | 20-40 | - | 0.0 | 0.4 |

- This period varies depending on the species and number of plants per m2. Mother plants remain in this phase until the end (6 - 12 months).
- The changeover from 18 to 12 hours varies depending on the variety. The rule of thumb is to change after 2 weeks.
- Reduce hours of light if ripening goes too fast. Watch out for increasing Relative Humidity
- Double CANNAZYM dosage to 50 ml/10 litres, if substrate is reused.
- 20 ml/ 10 litres standard, increase to a maximum of 40 ml/10 litres for extra flowering power

EC: EC+ value is based in mS/cm when EC water = 0.0 by 25°C, pH 6.0
Add the EC of the tap water that is used to the recommended EC!
The EC total in the example is with tap water with an EC of 0.4
pH: Recommended pH is between 5.5 and 6.2
Adding pH- can increase EC.
Use pH- grow in the vegetative as in the generative phase to lower the pH.

The guidelines in the table aren't an iron law, but can help novice growers to develop a sophisticated fertilisation strategy. The optimum fertilisation strategy is further determined by factors such as: temperature, humidity, plant species, root volume, moisture percentage in substrate, water dosage strategy, etc.