

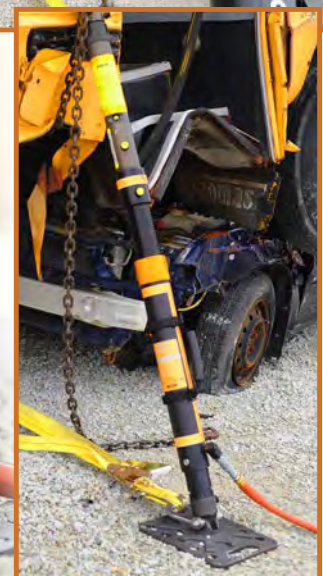
PARATECH®

LIFT ♦ SHIFT ♦ CONTAIN ♦ STABILIZE ♦ PENETRATE

MADE IN THE USA & USED WORLDWIDE

HYDRAFUSION STRUTS

The Paratech HydraFusion Struts offer end users the ability to lift up to 10 U.S. Tons with a safety factor of 2:1 and to stabilize up to 20,000 lbs. with a safety factor of 4:1. The innovative, built in Dual Shaft End Adapter (patent pending) allows users to safely use Paratech LongShore, LockStroke or AcmeThread Struts and Extensions in conjunction with the incredible lifting ability of the HydraFusion Strut.



PARATECH®

www.paratech.com

PARATECH HEADQUARTERS: P.O. BOX 1000, FRANKFORT, IL 60423 USA
TOLL FREE: +1 800 435 9358 PHONE: +1 815 469 3911 FAX: +1 815 469 7748 EMAIL: paratech@paratech.com

PARATECH EUROPE: P.O. BOX 174, 5260 ODENSE S, DENMARK
PHONE: +45 66 11 24 22 FAX: +45 66 11 32 EMAIL: paratech@paratech.dk



CERTIFICATE NO.
ISO9001:2008



HYDRAFUSION STRUTS

All lift 10 tons (9.0 mt) with a 2:1 safety factor.

All shore 20,000 lbs. (9.0 mt) with a 4:1 safety factor



HFS 04: lifts 4 inches (10.2 cm)

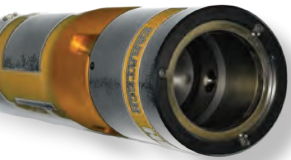


HFS 10: lifts 10 inches (25.4 cm)



HFS 16: lifts 15.9 inches (40.4 cm)

Part No.	Description	LIFT HEIGHTS		NET WEIGHT		SHIP WEIGHT		
		in	cm	lb	kg	lb	kg	
22-79HA04	HydraFusion Strut 04	21.6 – 25.4 in / 54.8 – 64.5 cm	4	10.2	20.71	9.39	21.71	9.84
22-79HA10	HydraFusion Strut 10	28.6 – 38.5 in / 72.6 – 97.7 cm	10	25.4	30.31	13.74	31.31	14.20
22-79HA16	HydraFusion Strut 16	35.4 – 51.1 in / 89.9 – 129.7	15.9	40.4	39.21	17.78	40.21	18.24
22-79HA04K	HydraFusion Strut 04 Kit		4	10.2	31.86	14.45	33.86	15.36
22-79HA10K	HydraFusion Strut 10 Kit		10	25.4	41.46	18.81	43.46	19.71
22-79HA16K	HydraFusion Strut 16 Kit		15.9	40.4	50.36	22.84	52.36	23.75
22-790020	Hydraulic Pump Only				11.15	5.05	12.15	5.51



DUAL SHAFT END ADAPTER

Patent Pending Dual Shaft Adapter for use with Paratech AcmeThread, LockStroke or LongShore RescueStruts.

04 HYDRAFUSION STRUT KIT

Net Weight: 31.86 lb 14.45 kg
Part No. 22-79HA04K



10 HYDRAFUSION STRUT KIT

Net Weight: 41.46 lb 18.81 kg
Part No. 22-79HA10K



16 HYDRAFUSION STRUT KIT

Net Weight: 50.36 lb 22.84 kg
Part No. 22-79HA16K



No-spill, flat-face hydraulic couplings with a non-conductive 10 ft (3 m) kink-resistant hose. Two speed, single acting, lightweight, 10,000 psi (690 bar), metal hydraulic pump.

HYDRAFUSION PUMP WITH GAUGE AND HOSE ONLY

Part No. 22-790020G



HYDRAFUSION PUMP WITH HOSE ONLY

Part No. 22-790020

