

MSA G1 iTIC Integrated Thermal Imaging Camera



THE SAFETY OF VISION – NOW FOR EVERYONE

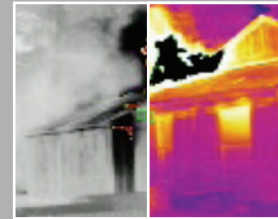
The FIRST and ONLY TIC Integrated Directly into the SCBA

- MSA provides personal thermal imaging to EVERY firefighter — From 360 to Rescue; Egress to Overhaul.
- MSA equips every firefighter with the sense of vision – no longer do you need to share TICs or remember to bring them on scene
- No additional bulky equipment added to your facepiece or hanging from your gear
- Compatible with all G1 SCBA via a simple field upgrade
- Powered by the G1's single integrated power source — Never check multiple battery locations again
- Single button functionality allows for simple, intuitive use

Take Advantage of the Latest Technology

- Lightweight — Only adds 4.2 oz. over the standard MSA G1 Control Module
- Up to five user-selectable palettes — Ten+ additional palettes available via MSA A2 software
- 220 x 176 resolution ensures crystal clear images
- Compliant to the 2018 edition of the NFPA 1981 and 1982 standards
- A full 5 year warranty on the thermal imager — Additional extended warranties available up to 15 years

Visit WWW.MSAFIRE.COM/BREATHE to learn more.



Multiple palettes available

Part of the
**MSA G1 SCBA
Platform
for the
Future**

