

MSA G1 iTIC  
Integrated Thermal Imaging Camera



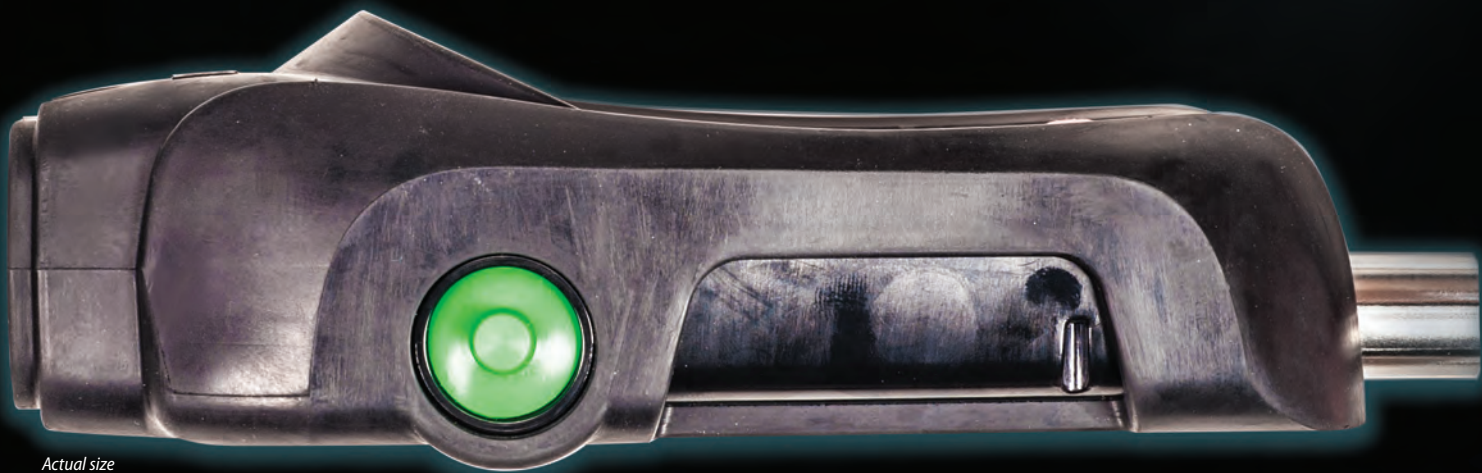
**WHEN YOU GO IN, WE GO IN WITH YOU.**

## MSA provides vision and safety for all

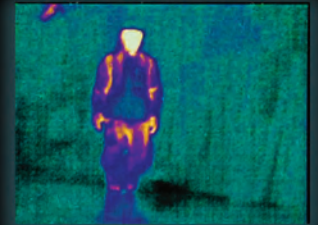
MSA introduced one of the first firefighting thermal imaging cameras over a decade ago. In the years that followed, MSA has continued to refine and innovate the handheld TIC with industry leading products. Our commitment to the vision and safety of the fire service continues today with the MSA G1 iTIC, a thermal imaging camera integrated directly into the SCBA. This breakthrough adaptation allows for faster, easier, and more reliable thermal imaging that is available to more firefighters than ever before.

The MSA G1 iTIC provides many of the benefits found in entry-level handheld cameras while providing the intuitive experience and rugged durability expected from MSA. The iTIC can be ordered as an upgrade kit, compatible with any fielded G1 SCBA or as an installed accessory on any new G1 SCBA order — it only adds 4.2 oz. and 1.25" compared to a standard control module!

Features include outstanding image quality, a lightweight and ergonomic design, and multiple customization options to arrange the unit to your departments preference. The iTIC takes advantage of the G1 SCBA's control module color screen to provide easy accessibility to thermal imaging any time that the SCBA has been powered on.



*Actual size*



***Multiple Palettes Available***

## Features and Benefits

- Lightweight and small. Only 1.25" longer and 4.2 oz. heavier than a standard MSA G1 SCBA control module
- Compatible with all fielded G1 SCBA via a simple field upgrade — Can also be ordered as an installed accessory on any new G1 SCBA
- Powered by the G1 SCBA single integrated power source
- Easy customization of camera features via MSA A2 Software
- Integration into the SCBA control module means the iTIC can never be forgotten or left behind
- Simple "Point and View" design allows for easy understanding of where the camera is aimed and what the user is viewing
- Single button functionality for simple, intuitive use
- Auto-On feature for iTIC screen to come on as SCBA is powered up
- Standard 220 x 176 color resolution provides outstanding image quality
- 30 hZ refresh rate for smooth image rendering and no screen freezing
- A full 5 year warranty on the thermal imager, extendable to 15 years to match the G1 SCBA
- 5 user selectable palettes available at one time with over 20 to choose from via MSA A2 software
- NFPA 1981 and 1982 - 2018 Compliant



Actual size



## Technical Specifications

APPROXIMATE DIMENSIONS	6.5" x 3.0" x 1.5" (LxWxH) (165 mm x 76 mm x 38 mm)
SENSOR	Vanadium Oxide
WEIGHT	4.2 ounces heavier than a standard control module
POWER SOURCE	G1 internal power source
FIELD OF VIEW	35°H; 25°V
APPROVALS	NFPA 1981/1982-2018, NIOSH CBRN
NET EQUIVALENT TEMPERATURE DIFFERENCE	<100mK (.10°C), average 75mK (.075°C) typical
TEMPERATURE MEASUREMENT	+/- 18°F (10°C) 0-220°F (0-100°C) +/- 10% 220°F-932°F (100°C-500°C)
RESOLUTION	220 x 176
REFRESH RATE	30 hz
DETECTION DISTANCE	490 Feet

INTEGRATED TIC UPGRADE KITS	
10175010-SP	G1 Control Module w/ Integrated TIC upgrade kit — 2216 psig
10175021-SP	G1 Control Module w/ Integrated TIC upgrade kit — 4500/5500 psig

ACCESSORIES	
10148741-SP	Replacement rechargeable power source for the G1 SCBA
10158385	Charging station – G1 SCBA rechargeable power source

## MSA G1 SCBA Fire Service Edition

A	B	C	D	E	F	G	H	J	K	L
System Pressure	Cylinder Connection	Harness	Cradle Type	Lumber Type	Regulator Type	Regulator Hose Type	Emergency Breathing Support	Speaker Module	PASS	Battery Type
2 2216 psig 4 4500 psig 5 5500 psig*	2 CG1 Threaded Remote Connection 4 CG4 Quick Connect Remote Connection	1 Standard without Chest Strap 2 Standard with Chest Strap 3 Serviceable Tonal without Chest Strap 4 Serviceable Tonal with Chest Strap 9 Serviceable Tonal without Chest Strap No PASS 10 Serviceable Tonal with Chest Strap No PASS	M Metal Band	A Adjustable Swiveling Lumber Pad B Basic C Basic, Solid buckle D Adjustable Swiveling, Solid buckle E Adjustable Swiveling, Berry Compliant, Solid buckle 1 Rescue Belt II Hook, SF 2 Rescue Belt II Carabiner, SF 3 Rescue Belt II SF FireTech Rope, Hook 4 Rescue Belt II, SF FireTech Rope, Carabiner 5 Rescue Belt II, Lightning Hook, SF FireTech Rope 6 Rescue Belt II, Lightning Hook, SF Standard Nylon Rope 7 Rescue Belt II, Lightning GT Hook, SF FireTech Rope 8 Rescue Belt II Lightning GT Hook, SF Acetate Nylon Rope	1 Pump cover Left Shoulder † 2 Solid cover Left Shoulder †	C Continuous Q Quick Connect	0 None 1 Waist Mounted Quick Fill † 2 Extendable II 3 Waist Mounted Quick Fill and Extendable II* 5 Waist mounted Quick Fill w/ hose and pouch* 6 Extendable II w/ hose and pouch 7 Waist mounted Quick Fill w/ hose and pouch, Extendable II* A Pouch only	L Left Chest †	A PASS Right Shoulder † C PASS Telemetry Right Shoulder † E PASS Right Shoulder w/ Integrated TIC † G PASS Telemetry Right Shoulder w/ Integrated TIC † H No PASS Right Shoulder † J No PASS Telemetry Right Shoulder † K No PASS Right Shoulder w/ Integrated TIC † L No PASS Telemetry Right Shoulder w/ Integrated TIC †	A. Rechargeable* B. Rechargeable* *If telemetry is ordered it must be selected.

**K**

**PASS**

- A PASS Right Shoulder †**
- C PASS Telemetry Right Shoulder †**
- E PASS Right Shoulder w/ Integrated TIC †**
- G Pass Telemetry Right Shoulder w/ Integrated TIC †**
- H No PASS Right Shoulder †**
- J No PASS Telemetry Right Shoulder †**
- K No PASS Right Shoulder w/ Integrated TIC †**
- L No PASS Telemetry Right Shoulder w/ Integrated TIC †**

† As worn

Note: This Bulletin contains only a general description of the products shown. While product uses and performance capabilities are generally described, the products shall not, under any circumstances, be used by untrained or unqualified individuals. The products shall not be used until the product instructions/user manual, which contains detailed information concerning the proper use and care of the products, including any warnings or cautions, have been thoroughly read and understood. Specifications are subject to change without prior notice.

MSA operates in over 40 countries worldwide. To find an MSA office near you, please visit [MSAsafety.com/offices](http://MSAsafety.com/offices).