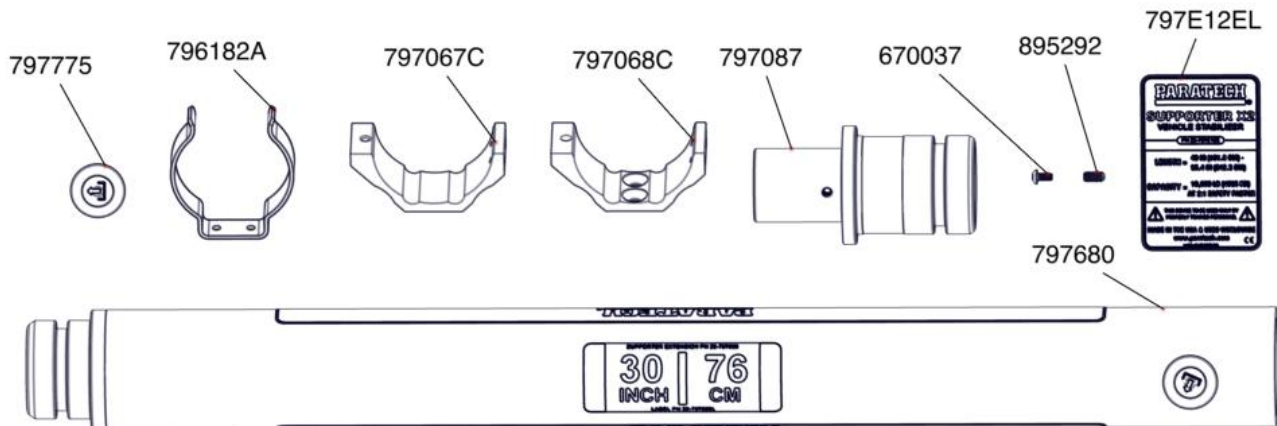


## INSTRUCTION SHEET SUPPORTER X2 UPGRADE KIT PN 22-797E12UP

### SUPPORTER KIT CONTAINS:

- PN 22-79775 LOCK PIN DOME, ASM
- (4) PN 22-796182A CLIP 3 IN (7.6 CM)
- (2) PN 22-797067C MTG BRKT -BOTTOM, DRUM & CLIPS
- (2) PN 22-797068C MTG BRKT - TOP DRUM & CLIPS
- PN 22-797087 SUPPORTER SHAFT END ADAPTER LG
- (8) PN 22-670037 10-24 X 3/8 BUT SOCHD SCR SS
- PN 22-895292 SET SCREW 1/4-20 X 1/2" CUP SS
- PN 22-797680 SUPPORTER 30" EXTENSION
- PN 22-797E12EL LABEL, SUPPORTER X2
- LOCTITE 271 NOT SHOWN



### TOOLS REQUIRED:

1/8" HEX KEY



3/16" HEX KEY



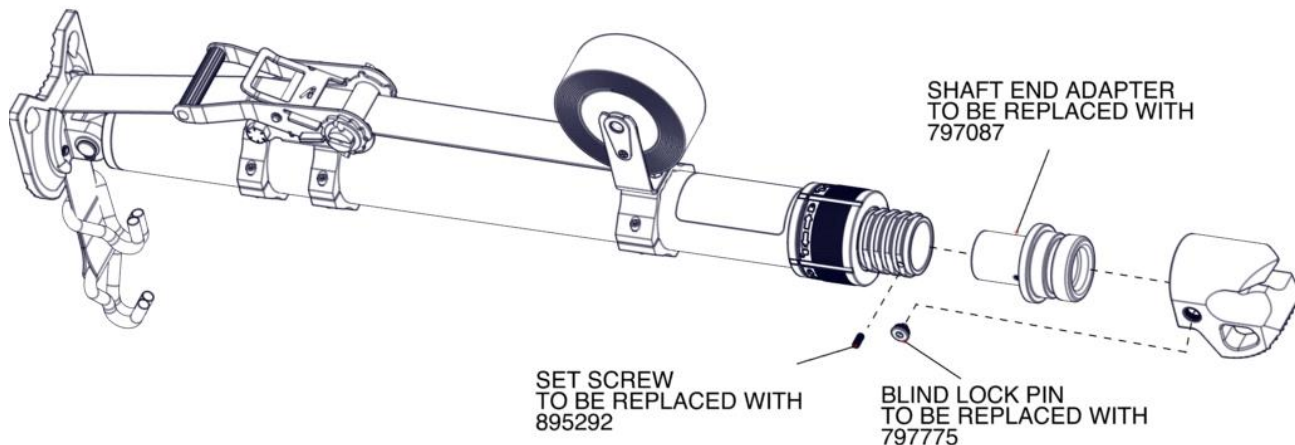
1/2" OPEN END WRENCH



**DISASSEMBLY PROCESS:**

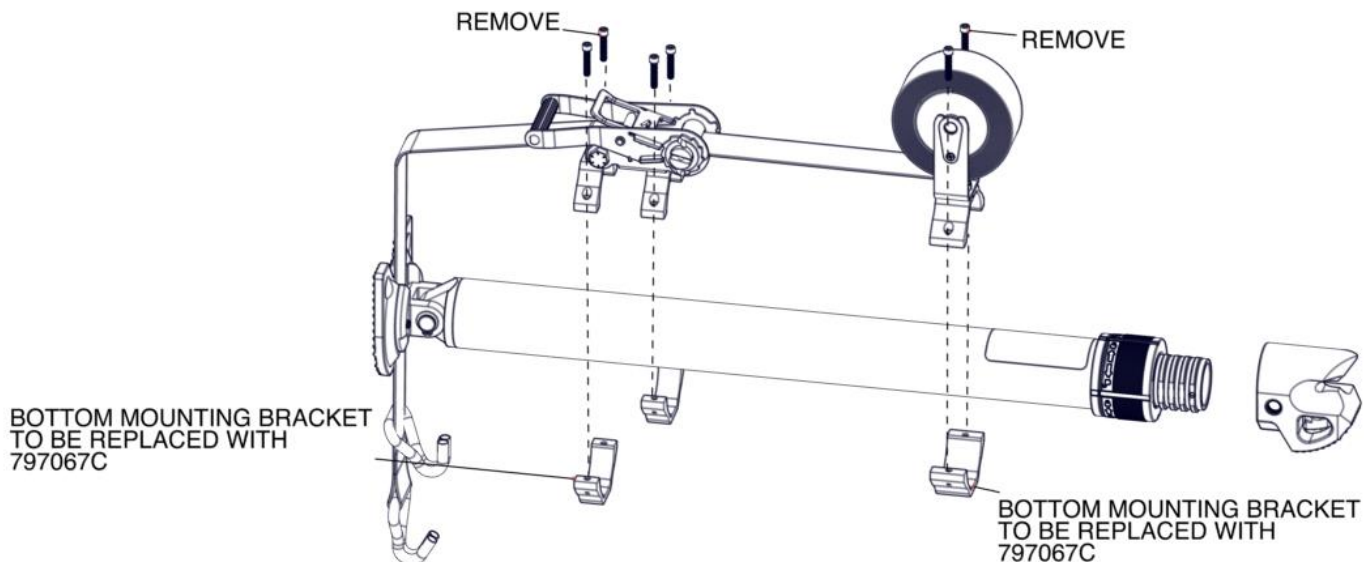
1. DISCONNECT THE RATCHET BELT DOUBLE-J HOOK FROM THE SUPPORTER BASE AND PARTIALLY EXTEND THE SUPPORTER SHAFT.
2. REMOVE THE BLIND LOCK PIN FROM THE SUPPORTER BASE, SEE FIGURE-1.
3. REMOVE THE SHAFT END ADAPTER FROM THE SUPPORTER SHAFT USING A 1/8" HEX KEY, SEE FIGURE-1

**FIGURE-1**



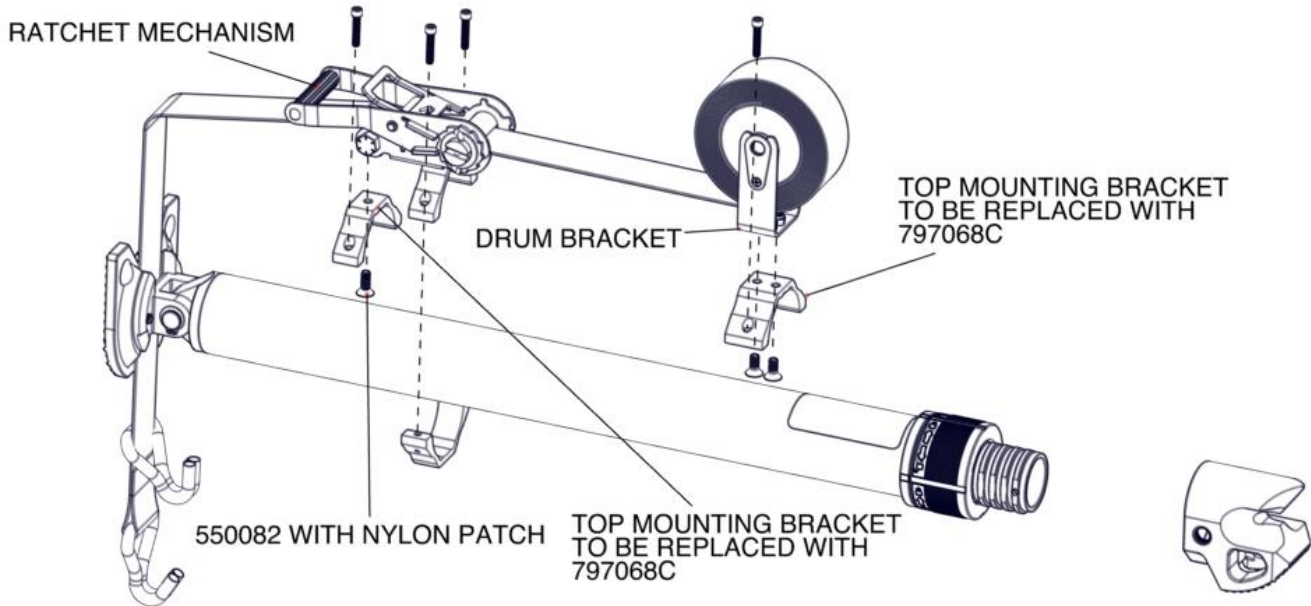
4. REMOVE THE RATCHET MECHANISM AND BELT DRUM FROM THE SUPPORTER TUBE BY UNSCREWING 6-EACH MOUNTING BRACKET SCREWS USING A 3/16" HEX KEY, SEE FIGURE-2. NOTE: SAVE ALL HARDWARE FOR REINSTALLATION AND NOTE ITS LOCATION.
5. REMOVE 2-EACH BOTTOM MOUNTING BRACKETS, SEE FIGURE-2.

**FIGURE-2**



6. USING A 3/16" HEX KEY AND 1/2" OPEN END WRENCH, REMOVE TOP MOUNTING BRACKET FROM THE DRUM BRACKET SEE FIGURE-3.
7. USING A 3/16" HEX KEY, REMOVE THE TOP MOUNTING BRACKET FROM THE RATCHET MECHANISM SEE FIGURE-3

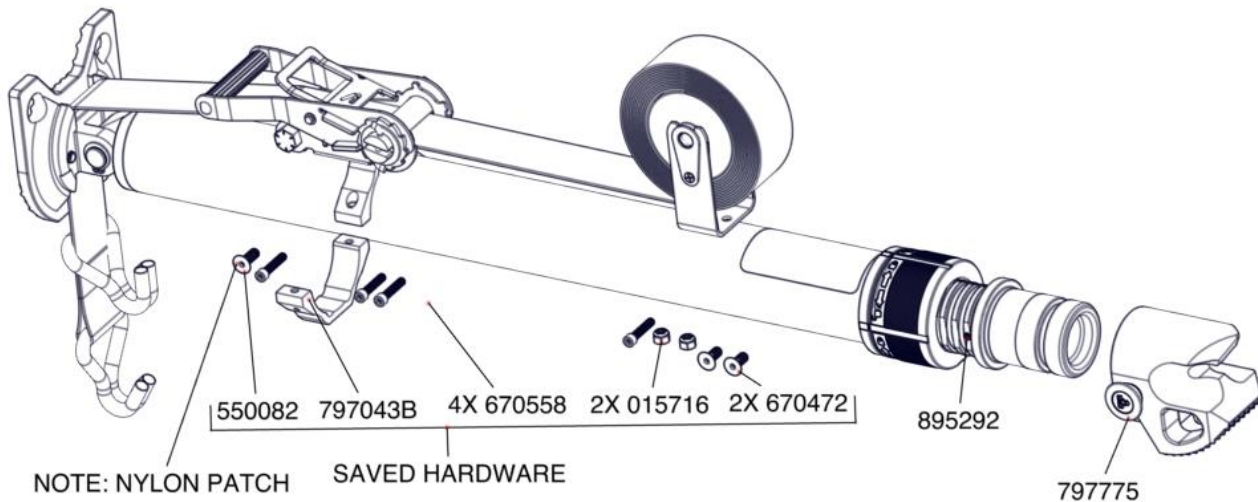
**FIGURE-3**



**ASSEMBLY PROCESS:**

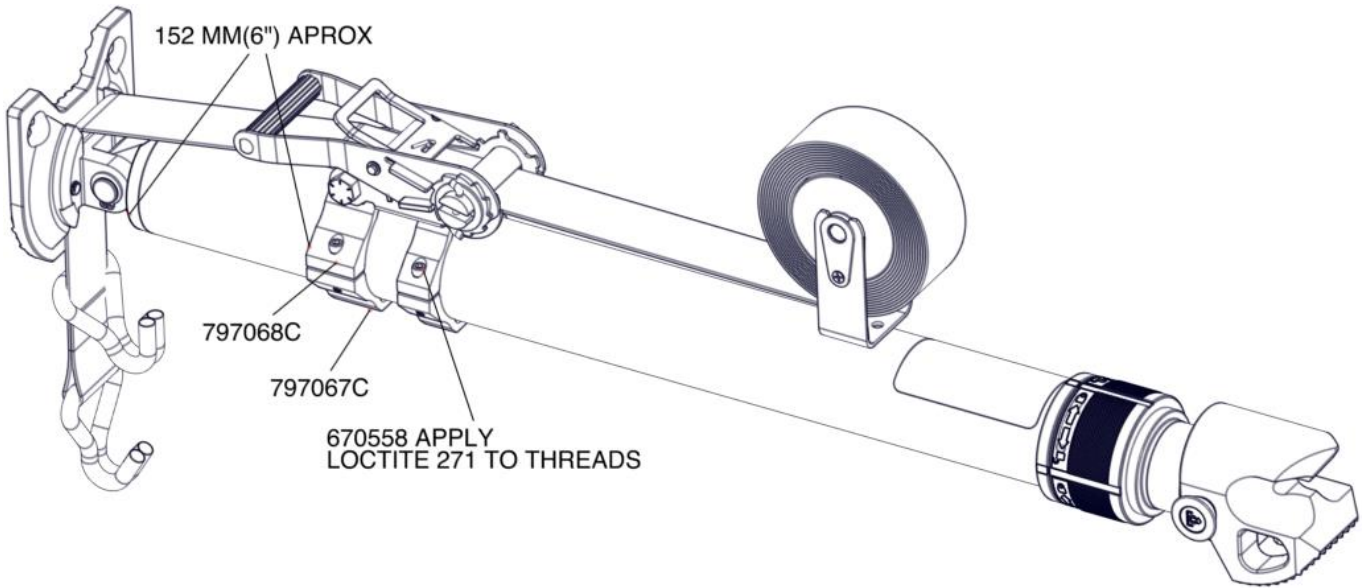
1. CLEAN AND INSPECT ALL COMPONENTS FOR DAMAGE BEFORE REINSTALLATION ONTO THE SUPPORTER TUBE.
2. INSTALL NEW LOCK PIN, PN 22-797775, INTO THE SUPPOETER BASE USING A 5/8" OPEN END WRENCH AND A SMALL AMOUNT OF LOCTITE 271 PROVIDED. SEE FIGURE-4
3. INSERT THE NEW SHAFT END ADAPTER, PN 22-797087, INTO THE SUPPORTER SHAFT USING THE NEW 1/4-20 X 1/2" SET SCREW USING A 1/8" HEX KEY AND LOCTITE 271 PROVIDED. SEE FIGURE-4

**FIGURE-4**



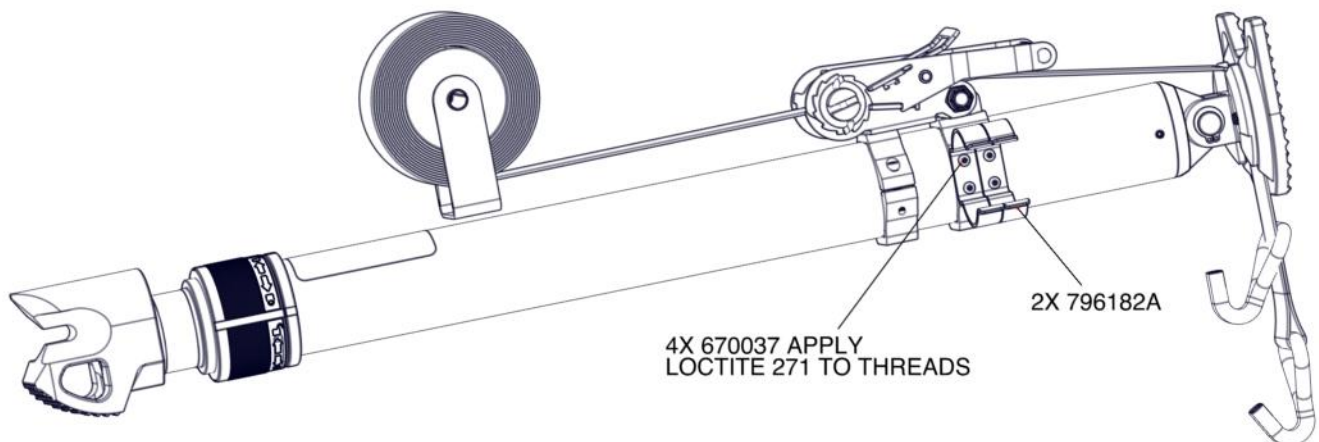
5. INSTALL A NEW TOP MOUNTING BRACKET, PN 22-797068C, ONTO THE RATCHET MECHANISM SCREW PN 22-550082 WITH NYLON LOCKING PATCH USING A 3/16 HEX KEY, SEE FIGURE-5. NOTE THE BRACKETS ORIENTATION.
6. ALIGN THE RATCHET MECHANISM BRACKET OVER THE SUPPORTER TUBE AND REATTACH IT TO A NEW BOTTOM MOUNTING BRACKET, PN 22-797067C AND REATTACH 22-79073B TO TOP BRACKET USING 3 OF THE CAP SCREWS REMOVED DURING DISASSEMBLY. NOTE THE ORIENTATION OF THE BRACKETS, POSITION ACCORDING TO FIGURE-5.

FIGURE-5



7. SECURE 2-EACH EXTENSION CLIPS ONTO THE TOP AND BOTTOM RATCHET MECHANISM BRACKETS USING THE #10-24 X 3/8" BUTTON HEAD SCREWS PROVIDED, PN 22-670037. NOTE: ADJUST BRACKETS EVENLY FROM SIDE TO SIDE AND HAND TIGHTEN THE CAP SCREW FROM STEP 5, SEE FIGURE-6.

FIGURE-6

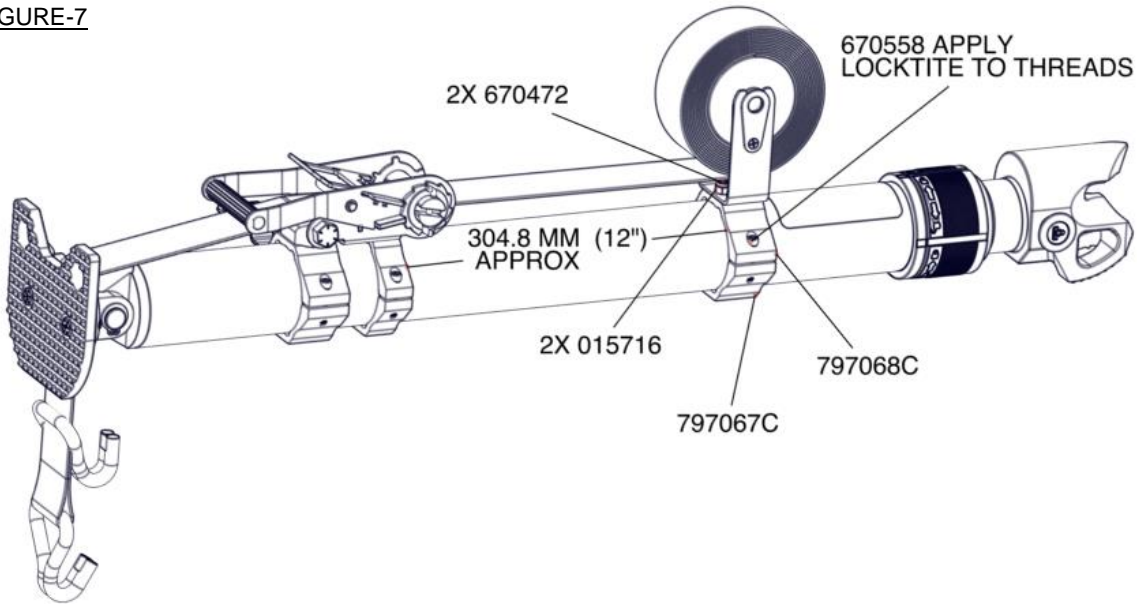




**ASSEMBLY PROCESS (CONT):**

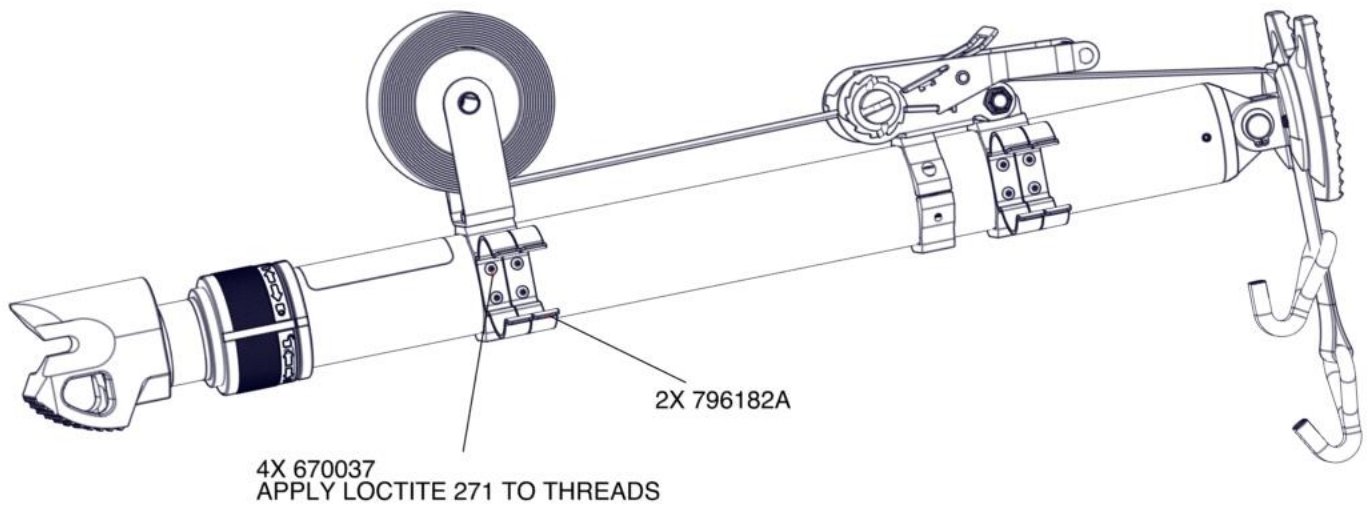
8. USING A 3/16 HEX KEY AND 1/2" OPEN END WRENCH, INSTALL A NEW TOP MOUNTING BRACKET PN 22-797068C ONTO THE DRUM BRACKET, SEE FIGURE-7. NOTE THE BRACKET ORIENTATION.
9. ALIGN THE BELT DRUM OVER THE SUPPORTER TUBE AND REATTACH IT TO A NEW BOTTOM MOUNTING BRACKET, PN-797067C, USING ONE OF THE 2 SCREWS REMOVED DURING DISASSEMBLY. NOTE THE ORIENTATION OF THE BRACKETS, POSITION ACCORDING TO FIGURE-7.

**FIGURE-7**



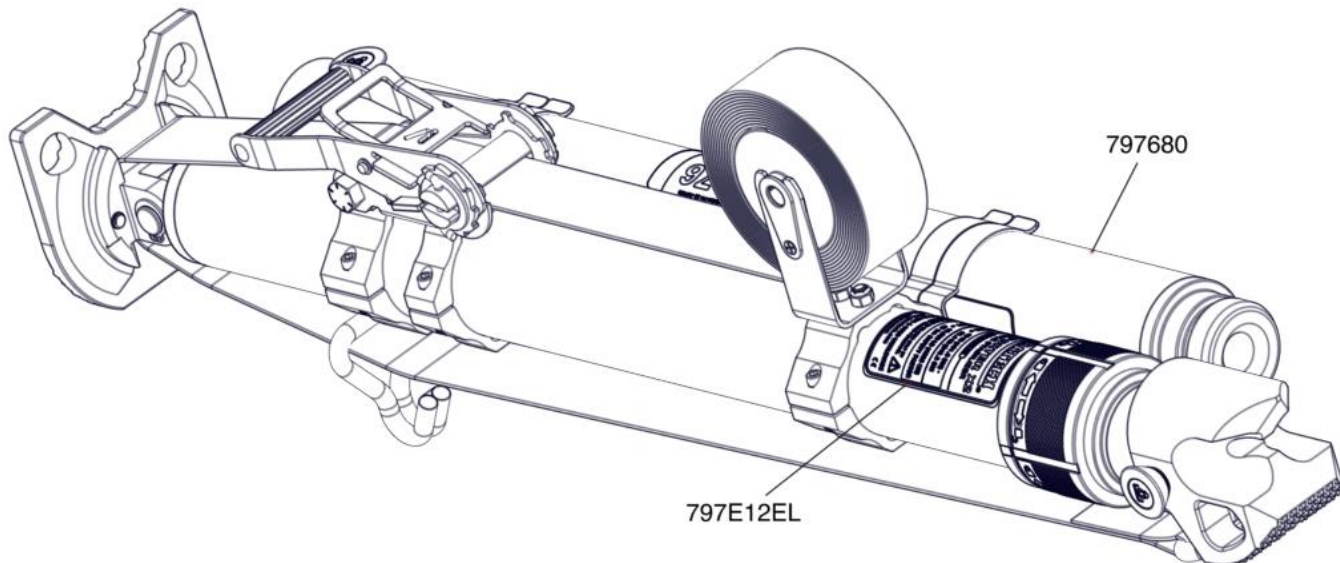
10. SECURE 2-EACH EXTENSION CLIPS ONTO THE TOP AND BOTTOM DRUM BRACKETS USING THE #10-24 X 3/8" BUTTON HEAD SCREWS PROVIDED, P/N 22-670037. NOTE: ADJUST BRACKETS EVENLY FROM SIDE TO SIDE AND HAND TIGHTEN THE CAP SCREW FROM STEP 8, SEE FIGURE-8.

**FIGURE-8**



11. TORQUE ALL PN 670558 SCREWS TO 16.27 Nm(12 FT-LB)
12. RETRACT THE SUPPORTER SHAFT AND RECONNECT THE RATCHET BELT DOUBLE-J HOOK INTO TOP SUPPORTER BASE. CHECK TO MAKE SURE THE RATCHET BELT AUTO RECOIL ROTATES FREELY.
13. REMOVE THE OLD PRODUCT LABEL, CLEAN THE SURFACE WITH ISOPROPLY ALCOHOL AND INSTALL THE NEW PRODUCT LABEL, PN 22-797E12EL. INSTALL SUPPORTER 30" (76.2 CM) EXTENSION PN 797680. SEE FIGURE-9.

FIGURE-9





## SUPPORTER X2 UPGRADE LIMITED WARRANTY

Each **SUPPORTER X2 UPGRADE** or component thereof, manufactured by Paratech Incorporated, has been thoroughly inspected and properly adjusted before shipment to insure the highest quality and the greatest possible reliability.

Paratech Incorporated (hereinafter referred to as "Seller") hereby warrants the **SUPPORTER X2 UPGRADE** or component thereof to the original retail buyer only against defects in material and workmanship under normal use and service for a period of five years on **SUPPORTER X2 UPGRADE** mechanism and one year on the **Ratchet** mechanism from the date of purchase. There is no warranty on **BELT**. This warranty shall constitute the sole warranty of the Seller with respect to the **SUPPORTER X2 UPGRADE** or component thereof. **THE SELLER HEREBY DISCLAIMS AND EXCLUDES ALL OTHER WARRANTIES, EXPRESSED OR IMPLIED, INCLUDING ANY IMPLIED WARRANTY OR MERCHANTABILITY OR FITNESS FOR A PARTICULAR PURPOSE.** The Seller neither assumes nor authorizes any other person to assume for it any other obligations or liabilities in connection with the sale or use of this product.

Should there be any defects in the material or workmanship of the **SUPPORTER X2 UPGRADE**, buyer should return the defective product to the factory for inspection with shipping prepaid within one year from the date of purchase. If inspection shows that the **SUPPORTER X2 UPGRADE** or a component thereof is defective and that such defects were not caused by negligence, misuse, accident or unauthorized service, the product sold hereunder will be repaired or replaced at the option of the Seller, without charge, FOB at the factory, Frankfort, Illinois.

**THIS REMEDY SHALL BE THE EXCLUSIVE REMEDY FOR BREACH OF WARRANTY WITH RESPECT TO THE SUPPORTER X2 UPGRADE OR COMPONENTS THEREOF. THE SELLER SHALL NOT BE LIABLE FOR INCIDENTAL OR CONSEQUENTIAL DAMAGES RESULTING FROM ANY BREACH OF WARRANTY WITH RESPECT TO THE SUPPORTER X2 UPGRADE AND COMPONENTS THEREOF FROM ANY DELAY IN THE PERFORMANCE OF THE REMEDY HEREUNDER.**

# PARATECH®

PARATECH INCORPORATED  
P.O. BOX 1000  
1025 LAMBRECHT ROAD  
FRANKFORT, ILLINOIS 60423-7000

TELEPHONE (815) 469-3911  
FAX (815) 469-7748