

RDG 60 REMARKABLY FLEXIBLE, LIGHT AND BREATHABLE.

INNO
TEX
ENERGY™

Shorter front, longer back coat. Low-rise pant. Streamline, dual-color design packed with a host of innovative, ergonomic features.

STANDARD FEATURES

- A VARIABLE HEIGHT COLLAR™**
Low-rise front, high-rise back neck/collar configuration. US Patent 8,151,371
- B NO-GAP™ THROAT FLAP**
Provides a NO-GAP™ thermal protection.
- C ERGONOMIC FULL MOTION NOSEAM™ SHOULDER**
Designed to follow natural arm movements for optimal mobility. Seams are placed away from high-abrasion areas.
- D RETRACTABLE ACTION BACK**
Adds length across your back. Increased mobility when reaching and stretching.
- E DURAHEM™ SLEEVE AND LEG HEMS**
Ultra-resistant aramid-coated piping sewn to the cuff. Protects cuffs from abrasion. (Patent pending)
- F ANGLED CUFF SLEEVE HEM**
Increases protection for the top of the hand without compromising hand mobility.
- G OFFSET SEAM DESIGN**
Seams are positioned away from high-abrasion areas, increasing wear life.
- H ADJUSTABLE BELT**
Comes with a 2-inch Nomex™ belt.
- I COMPLETE MOTION CROTCH**
Allows greater freedom of movement and prevents twisting.
- J ENHANCED MOBILITY KNEE™ (EMK™)**
Enhances mobility without tugging. Ensures that the knee protection stays securely in place.
- K NO-BULK™ PANT CLOSURE**
Streamlined 3-layer pant closure flap.
- L REFLECTIVE PIPING SEAMS**
Increases visibility.
- M EASY-TO-GRIP PADDED PULL TAB**
Oversized and padded for easy handling with gloves.

PRECONFIGURED OPTIONS

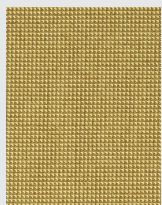
- 1** Black Nomex® wristlet with thumb hole.
- 2** Left chest 8" X 4" X 2" radio pocket with mic loop.
- 3** Right chest flashlight holder - Clip with Hook & Loop Fastener.
- 4** Two 8" x 9" semi-bellows pockets on coat.
- 5** 3M™ Scotchlite™ reflective 3" triple segmented trim (Lime/Yellow and Grey) in New York Pattern.
- 6** Two 10" x 10" bellows pockets on pants.
- 7** 7.5" X 8" inside left pocket with 1" X 3" hook & loop attachment. (Not on picture)
- 8** Deluxe heavy-duty removable cotton "H" back suspenders with padding.



TPP 37 THL 274

Additional options available on request (\$).

OUTER SHELL



PBI Max™ 7.0 Dual color: Gold and Black
Twill weave, with Teflon® F-PPE finish.
Content: PBI®/Kevlar® spun yarn with Kevlar® filament.
Weight: 7.0 oz/yd²



MOISTURE BARRIER



STEDAIR® Gold
Substrate: 50% Kevlar®/30% Nomex®/20% PBI, woven fabric.
Film: Bi-component ePTFE membrane.
Total Weight: 5.2 oz/yd²



THERMAL LINER



GLIDE ICE 2-LAYER
Face Cloth: 60% Nomex® filament, 40% Nomex®/Lenzing FR® spun yarns, twill weave.
Batting: 2 layers of Nomex® spunlace - 2.3 oz./yd² and 1.5 oz./yd²
Total Weight: 7.4 oz/yd²



OPTIONS & SIZES


ADDITIONAL OPTIONS (\$)


| COAT | CLASSIC™ | | ENERGY™ | | |
|--|----------|--------|---------|--------|--------|
| | RDG 10 | RDG 20 | RDG 40 | RDG 50 | RDG 60 |
| Mic loop / P.A.S.S. loop | ● | ● | ● | ● | ● |
| Flashlight Holder - Clip with Hook & Loop Fastener (SL-90) | ● | ● | ● | ● | ● |
| Flashlight Holder - Tab with Hook & Loop Fastener | ● | ● | ● | ● | ● |
| Flashlight Holder - Riveted clip with Hook & Loop Fastener | ● | ● | ● | ● | ● |
| Utility clip on shell strap | ● | ● | ● | ● | ● |
| Utility clip on polymer coated aramid loop | ● | ● | ● | ● | ● |
| D-Ring on shell strap | ● | ● | ● | ● | ● |
| Riveted D-Ring | ● | ● | ● | ● | ● |
| Riveted clip | ● | ● | ● | ● | ● |
| Fixed glove strap | ● | ● | ● | ● | ● |
| Removable utility clip QRS system | | | ● | ● | ● |
| Removable utility glove strap QRS system | | | ● | ● | ● |
| 3M Scotchlite® 5686 - 3" (triple segmented trim) - Red-Orange & Grey | | | ● | ● | ● |
| 3M Scotchlite® 9586 - 3" (triple trim) - Red-Orange & Grey | ● | ● | | | |

| PANTS | RDG 10 | RDG 20 | RDG 40 | RDG 50 | RDG 60 |
|--|--------|--------|--------|--------|--------|
| Leg gaitor Neoprene | ● | ● | ● | ● | ● |
| Fixed glove strap | ● | ● | ● | ● | ● |
| D-Ring on shell strap | ● | ● | ● | ● | ● |
| Riveted D-Ring | ● | ● | ● | ● | ● |
| Riveted clip | ● | ● | ● | ● | ● |
| Utility clip on shell strap | ● | ● | ● | ● | ● |
| Kevlar belt | ● | ● | | | |
| Belt loops (4x1.5) unit | ● | ● | | | |
| 3M Scotchlite® 5686 - 3" (triple segmented trim) - Red-Orange & Grey | | | ● | ● | ● |
| 3M Scotchlite® 9586 - 3" (triple trim) - Red-Orange & Grey | ● | ● | | | |

SIZES

| COAT 7 sizes, from S to 4XL. Comes in body 2 with regular sleeve length. | | | | | | | | PANTS 28,30, 32 or 34 inseams. | | | | | | | |
|--|----|----|----|----|-----|-----|-----|--------------------------------|----|----|----|----|-----|-----|-----|
| SIZE | S | M | L | XL | 2XL | 3XL | 4XL | SIZE | S | M | L | XL | 2XL | 3XL | 4XL |
| CHEST | 36 | 40 | 44 | 48 | 52 | 56 | 60 | WAIST | 30 | 34 | 38 | 42 | 46 | 50 | 54 |

 **INNOTEX® USA**
2397 Harts Ferry Road
Ohatchee, AL 36271
USA

 **INNOTEX® CANADA**
275 Gouin Street
Richmond (Quebec)
Canada, J0B 2H0

CUSTOMER SERVICE
1-888-821-3121 (U.S. & Canada)
Tel: 819-826-5971
Fax: 819-826-5195

 **Kevlar® | Nomex®**  **PERFORMANCE PRODUCTS, INC.**



www.innotexprotection.com