

RDG WITHOUT COMPROMISE.



SHIPS IN 15 WORKING DAYS OR LESS

RAPID DELIVERY GEAR



**EVERY RDG MODEL
COMES WITH THE
SAME HIGH-QUALITY
CONSTRUCTION AND
STANDARD FEATURES
AS OUR CUSTOM
BUNKER GEAR.**



We've done the math to get your crew turned out quickly with customer-favorite options and preselected field-proven materials - at a price that fits your budget.
2 styles + 5 preconfigured models + 7 sizes = Innotex RDG

Designed to move with you, not impede you, INNOTEX® ENERGY™ lets you focus your energy on fighting fires, not your gear. Its streamlined design is packed with a host of innovative features that provide increased durability, unparalleled comfort and exceptional mobility, without adding bulk or weight or compromising thermal protection.

*US PATENT D627,950



**INNOTEX
ENERGY™**



A

Whether you opt for the RDG 60, 50 or 40, you know you're getting all the innovative and ergonomic standard features that make INNOTEX® ENERGY™ turnout gear one of the most performance-driven on the market.

A | VARIABLE-HEIGHT COLLAR™

Low-rise front, high-rise back neck/collar configuration provides a contoured fit, resulting in improved comfort and better head movement. (US PATENT 8,151,371)



B

B | ERGONOMIC FULL-MOTION NOSEAM™ SHOULDER

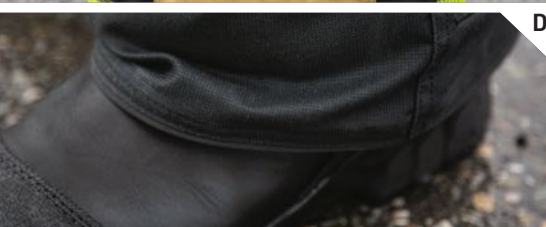
Designed to follow natural arm movements for unparalleled mobility and minimum coat rise. Seams are placed away from high-abrasion areas, eliminating stitching damage due to friction with the SCBA, extending wear life and reducing maintenance costs.



C

C | RETRACTABLE ACTION BACK

Adds width across your back, for increased mobility and comfort when reaching and stretching. Retracts when not in use.



D

D | DURAHEM™ SLEEVE AND LEG HEMS

Ultra-resistant aramid-coated piping is sewn to the cuff, especially designed to absorb most of the abrasion, leaving stitching intact. (PATENT PENDING)



E

E | ANGLED-CUFF SLEEVE HEM

Increases protection for the top of the hand without compromising hand mobility.



F

F | OFFSET SEAM DESIGN

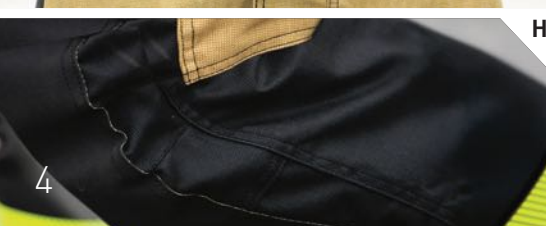
Seams are positioned away from high-abrasion areas, increasing wear life and lowering maintenance costs.



G

G | LOW-RISE PANT DESIGN WITH ADJUSTABLE BELT

Comes with a 2-inch Nomex™ belt, with adjustment on both sides and a quick-release buckle. Transfers the weight to the hips instead of the shoulders thus reducing fatigue. Can be used with or without suspenders.



H

H | ENHANCED-MOBILITY KNEE™ (EMK™)

Enhances mobility without tugging and ensures that the knee protection stays securely in place.

NO-GAP™ THROAT FLAP

Provides NO-GAP™ thermal protection in the throat area. Its padded and easy-to-grab pull tab secures the coat front for faster donning in a single step.

NO-BULK™ PANT CLOSURE

Streamlined 3-layer pant closure flap for additional flexibility, comfort and ease of movement when bending.

SEAMS WITH REFLECTIVE PIPING

Increased visibility at night and in dark confined spaces.

COMPLETE-MOTION CROTCH

Allows greater freedom of movement and prevents twisting.

WRISTLET EVACUATION SYSTEM

Allows water drainage, thus reducing water entrapment between layers and decreasing risks of steam burns.

NO-GAP™ ZIP-IN LINER ATTACHMENT

Continuous zip-in liner overlap design provides uninterrupted protection, eliminating gaps between the outer shell and the thermal liner.

LINER INSPECTION PORT

Secured by a zipper. Provides easy access for moisture barrier and thermal liner inspection.

VISLON® ZIPPERS

A robust high-temp polymer Vislon® zipper with a grabber for ease of donning and doffing.

EASY-TO-GRIP PADDED PULL TAB

Oversized and padded for easy handling with gloves.

RDG60

Shorter-front, longer-back coat. Low-rise pant. Streamlined, dual-color design packed with a host of innovative and ergonomic features.

STANDARD FEATURES

- A VARIABLE-HEIGHT COLLAR™
- B ERGONOMIC FULL-MOTION NOSEAM™ SHOULDER
- C RETRACTABLE ACTION BACK (see p4)
- D DURAHEM™ SLEEVE AND LEG HEMS
- E ANGLED-CUFF SLEEVE AND HEM
- F OFFSET SEAM DESIGN
- G LOW-RISE PANT & ADJUSTABLE BELT (see p4)
- H ENHANCED-MOBILITY KNEE™ (EMK™)
- I NO-GAP™ THROAT FLAP
- J COMPLETE-MOTION CROTCH
- K NO-BULK™ PANT CLOSURE (not shown)
- L SEAMS WITH REFLECTIVE PIPING
- M EASY-TO-GRIP PADDED PULL TABS



PRECONFIGURED OPTIONS

- 1 Black Nomex wristlet with thumb hole.
- 2 Left chest: 8" x 4" x 2" radio pocket with mic loop.
- 3 Right chest: flashlight holder and clip with hook & loop fastener.
- 4 Two 8" x 9" semi-bellows coat pockets.
- 5 3M™ Scotchlite™ reflective 3" triple-segmented trim (lime/yellow & grey) - New York pattern.
- 6 Two 10" x 10" bellows pant pockets.
- 7 7.5" x 8" inside left pocket & 1" x 3" hook & loop attachment.
- 8 Deluxe heavy-duty removable H-back cotton suspenders with padding.

Additional options available on request (\$)

T P P 3 7 T H L 2 7 4

OUTER SHELL

PBI MAX™ 7.0 DUAL COLOR - GOLD/BLACK

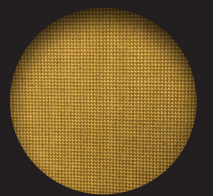
Twill weave, Teflon F-PPE finish

CONTENT

PBI®/Kevlar® spun yarn with Kevlar® filament

WEIGHT

7.0 oz/yd²



SAFETY COMPONENTS

MOISTURE BARRIER

STEDAIR® GOLD

SUBSTRATE

50% Kevlar® / 30% Nomex® / 20% PBI, woven fabric

FILM

Bi-component ePTFE membrane

TOTAL WEIGHT

5.2 oz/yd²



THERMAL LINER

GLIDE ICE 2-LAYER

FACE CLOTH

60% Nomex® filament / 40% Nomex® Lenzing FR® spun yarns, twill weave

BATTING

2 layers Nomex® spunlace:

2.3 oz./yd² + 1.5 oz./yd²

TOTAL WEIGHT

7.4 oz/yd²



SAFETY COMPONENTS

OUTER SHELL

ARMOR AP™ - BLACK COLOR

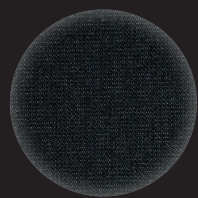
400-denier multi-filament twill weave with water-repellent finish

CONTENT

Kevlar® / Nomex®

WEIGHT

6.5 oz./yd²



SAFETY COMPONENTS

MOISTURE BARRIER

GORE® RT 7100 3D

SUBSTRATE

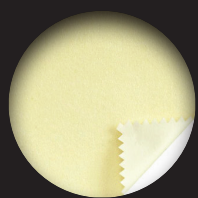
Nomex® non-woven spunlace

FILM

Bi-component ePTFE membrane

TOTAL WEIGHT

4.6 oz./yd²



GORE® RT 7100

THERMAL LINER

PRISM™ 2-LAYER

FACE CLOTH

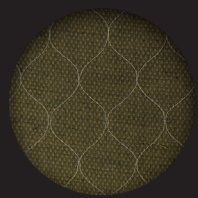
68% aramid
21% FR viscose
11% polyamide Dobby weave

BATTING

One layer E89™ spunlace
2.3 oz./yd² + 1.5 oz./yd²

TOTAL WEIGHT

7.4 oz./yd²



SAFETY COMPONENTS

Shorter-front, longer-back coat. Low-rise pant. Streamlined design packed with a host of innovative, ergonomic features.

RDG50



STANDARD FEATURES

VARIABLE-HEIGHT COLLAR™	A
ERGONOMIC FULL-MOTION NOSEAM™ SHOULDER	B
RETRACTABLE ACTION BACK (see p4)	C
DURAHEM™ SLEEVE AND LEG HEMS	D
ANGLED-CUFF SLEEVE AND HEM	E
OFFSET SEAM DESIGN	F
LOW-RISE PANT & ADJUSTABLE BELT (see p4)	G
ENHANCED-MOBILITY KNEE™ (EMK™)	H
NO-GAP™ THROAT FLAP	I
COMPLETE-MOTION CROTCH	J
NO-BULK™ PANT CLOSURE	K
SEAMS WITH REFLECTIVE PIPING	L
EASY-TO-GRIP PADDED PULL TABS	M

PRECONFIGURED OPTIONS

Black Nomex wristlet with thumb hole.	1
Left chest: 8" x 4" x 2" radio pocket with mic loop.	2
Right chest: flashlight holder & clip with hook & loop fastener.	3
Two 8" x 9" semi-bellows coat pockets.	4
3M™ Scotchlite™ reflective 3" triple-segmented trim (lime/yellow & grey) - New York pattern.	5
Two 10" x 10" bellows pant pockets.	6
7.5" x 8" inside left pocket & 1" x 3" hook & loop attachment (not shown).	7
Deluxe heavy-duty removable H-back cotton suspenders with padding.	8

Additional options available on request (\$)

TPP 54 THL 247

RDG40

Shorter-front, longer-back coat. Low-rise pant. Streamlined design packed with a host of innovative, ergonomic features.

STANDARD FEATURES

VARIABLE-HEIGHT COLLAR™	A
ERGONOMIC FULL-MOTION NOSEAM™ SHOULDER	B
RETRACTABLE ACTION BACK (see p4)	C
DURAHEM™ SLEEVE AND LEG HEMS	D
ANGLED-CUFF SLEEVE AND HEM	E
OFFSET SEAM DESIGN	F
LOW-RISE PANT & ADJUSTABLE BELT (see p4)	G
ENHANCED-MOBILITY KNEE™ (EMK™)	H
NO-GAP™ THROAT FLAP	I
COMPLETE-MOTION CROTCH	J
NO-BULK™ PANT CLOSURE	K
SEAMS WITH REFLECTIVE PIPING	L
EASY-TO-GRIP PADDED PULL TABS	M

PRECONFIGURED OPTIONS

Black Nomex wristlet with thumb hole.	1
Left chest: 8" x 4" x 2" radio pocket with mic loop.	2
Right chest: flashlight holder and clip with hook & loop fastener.	3
Two 8" x 9" semi-bellows coat pockets.	4
3M™ Scotchlite™ reflective 3" triple-segmented trim (lime/yellow & grey) - New York pattern.	5
Two 10" x 10" bellows pant pockets.	6
7.5" x 8" inside left pocket & 1" x 3" hook & loop attachment.	7
Deluxe heavy-duty removable H-back cotton suspenders with padding.	8

Additional options available on request (\$)

TPP 46 THL 231



OUTER SHELL

PIONEER™ - GOLD COLOR

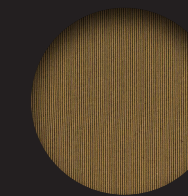
Plain weave, water-repellent finish

CONTENT

Kevlar® / Nomex® blend spun yarn

WEIGHT

6.6 oz./yd²



TENCATE

materials that make a difference

MOISTURE BARRIER

GORE® RT 7100 3D

SUBSTRATE

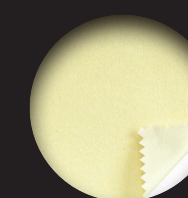
Nomex® non-woven spunlace

FILM

Bi-component ePTFE membrane

TOTAL WEIGHT

4.6 oz./yd²



GORE® RT 7100

THERMAL LINER

DEFENDER™ M NP - BRASS COLOR

FACE CLOTH

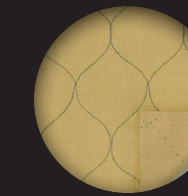
LENZING FR® / Para-aramid / Nylon blend spun yarn, plain weave.

BATTING

One layer needlepunch, non-woven.

TOTAL WEIGHT

7.0 oz./yd²



TENCATE

materials that make a difference

CLASSIC. NEVER BASIC.

PRICE AND QUALITY IN PERFECT BALANCE.

RDG20



Packed with field-proven INNOTEX® features, cut for comfort and made with exacting attention to detail, INNOTEX® CLASSIC turnout gear sets the bar for value without compromise.

RDG20

32"-length coat with snap-in removable liner. Regular-waist pant. Both have hook & loop closures and a zippered inspection port. Coat comes with heavy-duty brass zipper.

STANDARD FEATURES

- A** Unique patented 3" BR 1™ four-layer collar. (US Patent 6 481 018)
- B** Inverted L-shaped storm flap with integrated throat closure. Faster donning. Eliminates gaps around throat.
- C** Preformed sleeves and underarm gussets: increase mobility, minimize arm restriction and coat rise.
- D** Polymer-coated aramid cuff reinforcements.
- E** Two waist adjustment straps in black webbing with thermoplastic buckles. Hook & loop closure on outer fly flap with hook and D-ring safety clasp. 5-layer fly protection.
- F** Regular knees with polymer-coated aramid reinforcement and one extra layer of padding (14 oz Nomex® felt).



PRECONFIGURED OPTIONS

- 1** Black Nomex wristlet with thumb hole.
- 2** Left chest: 8" x 4" x 2" radio pocket with mic loop.
- 3** Right chest: flashlight holder + clip with hook & loop fastener.
- 4** Two 8" x 10" semi-bellows coat pockets.
- 5** 3M™ Scotchlite™ reflective 3" triple-segmented trim (lime/yellow & grey) - NFPA pattern.
- 6** Two 10" x 10" semi-bellows pant pockets.
- 7** 7.5" x 8" inside left pocket + 1" x 3" hook & loop attachment.
- 8** Deluxe heavy-duty removable H-back cotton suspenders with padding.

Additional options available on request (\$).

T P P 4 4 T H L 2 4 0

OUTER SHELL

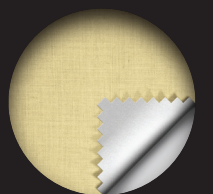
PIONEER™ - KHAKI COLOR
Twill weave with water-repellent finish
CONTENT
Kevlar® / Nomex® blend spun yarn.
WEIGHT
6.6 oz/yd²



TENCATE
materials that make a difference

MOISTURE BARRIER

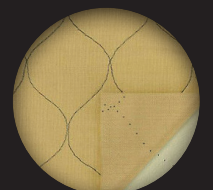
STEDAIR® 3000
SUBSTRATE
Nomex® non-woven spunlace.
FILM
Bi-component ePTFE membrane.
TOTAL WEIGHT
5.2 oz/yd²



Stedfast
ADVANCED PROTECTIVE TECHNOLOGIES

THERMAL LINER

DEFENDER M NP - BRASS COLOR
FACE CLOTH
Lenzing FR® / Para-aramid / Nylon blend spun yarn, plain weave.
BATTING
One layer needlepunch non-woven.
TOTAL WEIGHT
7.0 oz/yd²



TENCATE
materials that make a difference

INNOTEX
CLASSIC™

OUTER SHELL

BRIGADE™ 750 YELLOW

Plain weave, water-repellent finish

CONTENT

93% Nomex® / 5% Kevlar® / 2% Carbon

WEIGHT

7.5 oz/yd²



TENCATE
materials that make a difference

MOISTURE BARRIER

STEDAIR™ 3000

SUBSTRATE

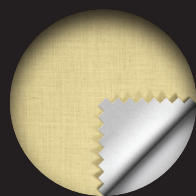
Nomex® non-woven spunlace.

FILM

Bi-component ePTFE membrane.

TOTAL WEIGHT

5.2 oz/yd²



Stedfast
ADVANCED BARBER TECHNOLOGIES

THERMAL LINER

0-8"

FACE CLOTH

50% Meta-aramid

50% FR modacrylic (spun)

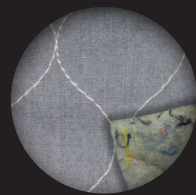
BATTING

Reprocessed Aramid, FR rayon,

needle punch, non-woven

TOTAL WEIGHT

8.0 oz/yd²



TENCATE
materials that make a difference

RDG10

32"-length coat with snap-in removable liner system. Regular waist pant. Both have hook & loop closures and a zippered inspection port. Coat comes with heavy-duty brass zipper.

STANDARD FEATURES

- A** Unique patented 3" BR 1™ four-layer collar. (US Patent 6 481 018)
- B** Inverted L-shaped storm flap with integrated throat closure. Faster donning. Eliminates gaps around throat.
- C** Preformed sleeves and underarm gussets: increase mobility, minimize arm restriction and coat rise.
- D** Polymer-coated aramid cuff reinforcements.
- E** Two waist adjustment straps in black webbing with thermoplastic buckles. Hook & loop closure on outer fly flap with hook and D-ring safety clasp. 5-layer fly protection.
- F** Regular knees with polymer-coated aramid reinforcement and one extra layer of padding (14oz Nomex® felt).



PRECONFIGURED OPTIONS

- 1** Natural Nomex® wristlet with thumb hole.
- 2** Left chest: 8" x 4" x 2" radio pocket with mic loop.
- 3** Two 8" x 10" semi-bellows coat pockets.
- 4** Reflective 3" triple-segmented trim (lime/yellow & grey) - NFPA pattern.
- 5** Two 10" x 10" semi-bellows pant pockets.
- 6** 7.5" x 8" inside left pocket + 1" x 3" hook & loop attachment.
- 7** Deluxe heavy-duty removable H-back cotton suspenders with padding.

Additional options available on request (\$).

TPP 4 3 THL 2 3 1

ADDITIONAL OPTIONS & SIZING.

OPTIONS (\$)

COAT	INNOTEX CLASSIC™		INNOTEX ENERGY™		
	RDG10	RDG20	RDG40	RDG50	RDG60
Mic loop / P.A.S.S. loop	•	•	•	•	•
Flashlight holder - clip with hook & loop fastener (SL-90)	•	•	•	•	•
Flashlight holder - tab with hook & loop fastener	•	•	•	•	•
Flashlight holder - riveted clip with hook & loop fastener	•	•	•	•	•
Utility clip on shell strap	•	•	•	•	•
Utility clip on polymer-coated aramid loop	•	•	•	•	•
D-ring on shell strap	•	•	•	•	•
Riveted D-ring	•	•	•	•	•
Riveted clip	•	•	•	•	•
Fixed glove strap	•	•	•	•	•
Removable utility clip QRS system			•	•	•
Removable utility glove strap QRS system			•	•	•
3M® Scotchlite® 5686 - 3" (triple-segmented trim): red-orange / grey			•	•	•
3M® Scotchlite 9586® - 3" (triple trim) : red-orange / grey		•			
3" (triple trim) : red-orange / grey	•				
PANTS	RDG10	RDG20	RDG40	RDG50	RDG60
Neoprene leg gaiter	•	•	•	•	•
Fixed glove strap	•	•	•	•	•
D-ring on shell strap	•	•	•	•	•
Riveted D-ring	•	•	•	•	•
Riveted clip	•	•	•	•	•
Utility clip on shell strap	•	•	•	•	•
Kevlar® belt	•	•			
Belt loops (4X1.5) unit	•	•			
3M® Scotchlite® 5686 - 3" (triple-segmented trim): red-orange / grey			•	•	•
3M® Scotchlite 9586® - 3" (triple trim) : red-orange / grey		•			
3" (triple trim) : red-orange / grey	•				

SIZES

COAT	7 sizes. Comes in body 2 with regular sleeve length.						PANTS	Inseam: 28 / 30 / 32 / 34							
SIZE	S	M	L	XL	2XL	3XL	4XL	SIZE	S	M	L	XL	2XL	3XL	4XL
CHEST	36	40	44	48	52	56	60	WAIST	30	34	38	42	46	50	54



innotexprotection.com

• DUPONT •
Kevlar | **Nomex**



GORE®
CROSSTECH®



 **TENCATE**

StedAIR®
PREVENT

3M | **Scotchlite™**
Reflective Material

INNOTEX® USA
2397 Harts Ferry Road
Ohatchee, AL 36271
USA

INNOTEX® CANADA
275 Gouin Street
Richmond (Quebec)
Canada, J0B 2H0

INNOTEX® CUSTOMER SERVICE
1-888-821-3121 (U.S. & Canada)
Tel: 819-826-5971
Fax: 819-826-5195

© 2020 INNOTEX INC. PRODUCTS ARE DISTRIBUTED IN THE U.S.A. BY INNOTEX CORP. ALL RIGHTS RESERVED. TM, ® AND THE INNOTEX LOGO ARE REGISTERED TRADEMARKS OF INNOTEX. † ALL OTHER TRADEMARKS ARE THE PROPERTY OF THEIR RESPECTIVE OWNERS. INNOTEX RESERVES THE RIGHT AT ANY TIME TO DISCONTINUE OR CHANGE SPECIFICATIONS, PRICE, DESIGN, FEATURES, MODELS OR EQUIPMENT WITHOUT INCURRING ANY OBLIGATION. PRINTED IN CANADA

CRD0000000020EN