



RAPID DELIVERY GEAR

5 turnout models to choose from. Shipped in 15 days or less.



RDG50

This preconfigured turnout is inspired by the INNOTEX ENERGY™ model and replaces the 65SB.

INNOTEX
ENERGY™



COMPOSITE



Outer Shell:

Proprietary blend of 80% Nomex® / Kevlar® spun yarns with 20% 400 denier Kevlar® filament, Twill weave, Black, 6.5oz/yd²



Moisture Barrier:

Crosstech® Black moisture barrier – Type 2F, 4.7 oz/yd²



Thermal Barrier

Prism 2-layer

STANDARD FEATURES



Basic Configuration

-32" style coat /
Regular waist pant

-New York style
Scotchlite®
3" Segmented (triple
trim)

-Zip-in liner
attachment

-Retractable Action
Back™

Variable height collar

All-around protection
with 4" back
transitioning to 3" front.

(US Patent 8 151 371)

Vislon® Zipper Closure

On coat and pants.

Flashlight Holder

Right Chest.



Radio Pocket 8" x 4" x 2" and mic loop

Left Chest.



8" x 9" Semi Bellow Pockets on Coat

Include grabbers for
easier grip.



Full Bellows 10" x 10" Pockets on Pants

Include grabbers for
easier grip.



Enhanced Mobility Knee™

Knees reinforced with
black Polymer Coated
Aramid.

Includes extra padding
in the knee (14 oz
Nomex® felt).

Preformed multi-panel
legs for improved range
of motion.



Waist Adjustment & Suspenders

-Kevlar® belt with belt loops

-H-style suspenders with neoprene padding



Black Nomex® Wristlet with thumb hole

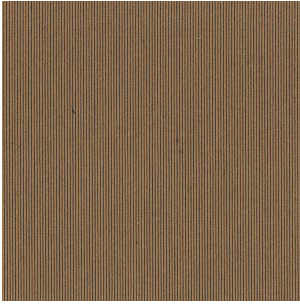
RDG40

The RDG40 is modeled on the 6222X, upgraded to the INNOTEX ENERGY™ and outfitted with new fabrics.

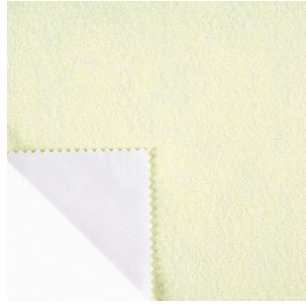
INNOTEX
ENERGY™



COMPOSITE



Outer Shell:
Pioneer Gold



Moisture Barrier:
RT 7100



Thermal Barrier:
Defender M NP Brass

STANDARD FEATURES



Basic Configuration

-32" style coat /
Regular waist pant

-NFPA style
Scotchlite®
3" Segmented (triple
trim)

-Zip-in liner
attachment

-Retractable Action
Back™



Variable Height Collar

All-around protection
with 4" back
transitioning to 3" front.

(US Patent 8 151 371)



Vislon® Zipper Closure

On coat and pants.



Flashlight Holder

Right Chest.



Radio Pocket 8" x 4" x 2" and mic loop

Left Chest.



8" x 9" Semi Bellow Pockets on Coat

Include grabbers for
easier grip.



Semi Bellows 10" x 10" Pockets on Pants

Inversed pockets
(bellow at front).
Include grabbers for
easier grip.



Enhanced Mobility Knees™

Knees reinforced with
black Polymer Coated
Aramid.

Includes extra padding
in the knee (14 oz
Nomex® felt).

Preformed multi-panel
legs for improved range
of motion.



**White Nomex® wristlet
with thumb hole**

**Waist Adjustment &
Suspenders**

-Kevlar® belt with belt
loops

-H-style suspenders
with neoprene padding

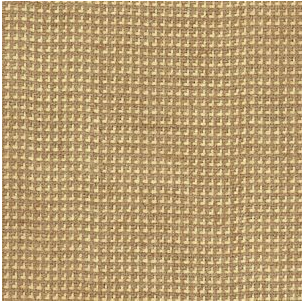
RDG30

The 55Q3 with a new combo of materials.

INNOTEX
CLASSIC™



COMPOSITE



Outershell:
PBI Max Gold



Moisture Barrier:
Crosstech® Black
moisture barrier – Type
2F, 4.7 oz/yd²



Thermal Barrier:
Glide Ice 2-layer



Basic Configuration

- 32" style coat /
Regular waist pants w/
High Back

-New York style
Scotchlite®
3" Segmented (triple
trim)

-Snap-in liner
attachment

-Retractable Action
Back™



3" BR-1 Collar

Patented BR-1™ collar
- 3" - INNO5000™
Series - 4 layers



**Zipper Closure on coat
/ Hook & Dee on pants**



Flashlight Holder

Right Chest.



**8" x 4" x 2" Radio
Pocket with mic loop**

Left Chest.



**8" x 10" Semi Bellow
Pockets**

With Vizgrip™ flap.



**10" x 10" full bellow
pockets**



**Enhanced Mobility
Knees**

Knees reinforced
with gold Polymer
Coated Aramid.

Includes extra padding
in the knee (14 oz
Nomex® felt).

Preformed multi-panel
legs for improved range
of motion.

PHOTO
TO COME



Waist Adjustment & Suspenders

-Two adjustment straps with "alligator" clips

-H-style suspenders with neoprene padding

White Nomex wristlet with thumb hole

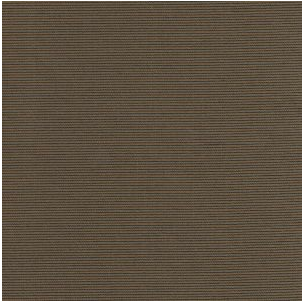
RDG20

Based on the 5222, with a new combination of fabrics.

INNOTEX
CLASSIC™



COMPOSITE



Outer Shell:
Pioneer Khaki



Moisture Barrier:
Stedair 3000



Thermal Barrier
Defender M NP Brass

STANDARD FEATURES



Basic Configuration

-32" style coat /
regular waist pant

-NFPA style 3M
Scotchlite® 3" triple
trim

-Snap-in liner
attachment

3" BR-1 Collar

Patented BR-1™ collar
- 3" - INNO5000™
Series - 4 layers

Brass Zipper closure on coat

Hook & Dee closure on pants



Flashlight Holder

Right Chest.

8" x 4" x 2" Radio pocket with mic loop

Left Chest.

8" x 10" semi bellow pockets on coat

10" x 10" Semi Bellow Pockets on pants



Regular Knees

Knees reinforced with gray Polymer Coated Aramid.

Includes extra padding in the knee (14 oz Nomex® felt).

Waist Adjustment & Suspenders

-Two adjustment straps with thermoplastic buckles

-H-style suspenders with neoprene padding

White Nomex wristlet with thumb hole

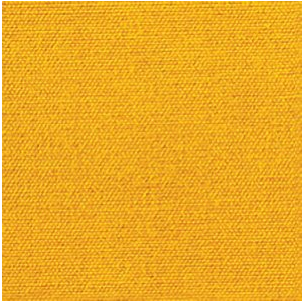
RDG10

The 5172

INNOTEX
CLASSIC™



COMPOSITE



Outer shell:

Nomex® IIIA, Plain Weave, Yellow, 7.5oz/yd²



Moisture Barrier:



Thermal Barrier:

Q-8

STANDARD FEATURES



Basic Configuration

-32" style coat /
regular waist pant

-NFPA style 3M
Scotchlite® 3" triple
trim

-Snap-in liner
attachment



3" BR-1 Collar

Patented BR-1™ collar
- 3" - INNO5000™
Series - 4 layers



Zipper with hook & loop closure



Hook & Dee closure on pants



8" x 4" x 2" Radio pocket with mic loop Left Chest.



8" x 10" Semi bellow pockets on coat



10" x 10" Semi bellow pockets on pants



Regular Knees

Knees reinforced
with gray Polymer
Coated Aramid.

Includes extra padding
in the knee (14 oz
Nomex® felt).



**White Nomex wristlet
with thumb hole**