



PARATECH

LIFT ♦ SHIFT ♦ CONTAIN ♦ STABILIZE ♦ PENETRATE

MADE IN THE USA & USED WORLDWIDE



BASES & END PLATES

Designed to be the strut's contact point, Paratech's wide assortment of aluminum alloy bases and end Plates offer unparalleled versatility in the widest range of collapse support situations.

FOR USE WITH:

AcmeThread

LockStroke

LongShore

HydraFusion

**ADJUSTABLE
THREADED
CONNECTOR**

For LockStroke Strut

Net Weight: 2.2lb 1.0kg
Part No. 22-796160



**SPRING
LOADED
CONNECTOR**

For LockStroke Strut

Net Weight: 2.2lb 1.0kg
Part No. 22-796170



**HINGED BASE
PLATE 12
12 IN / 30.5 CM**

45° hinged base with eight
1 in / 2.5 cm picket holes

Net Weight: 10.0lb 4.5kg
Part No. 22-796180R



**HINGED BASE
PLATE 12 with
ANCHOR RING
12 IN / 30.5 CM**

45° hinged base with eight
1 in / 2.5 cm picket holes

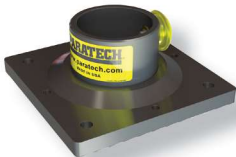
Net Weight: 12.0lb 5.4kg
Part No. 22-796180C



**COLUMN
BASE**

The column base can be used
with 3 struts to create a
column spot shore

16" x 16" / 40.6cm x 40.6cm
Net Weight: 18.2lb 8.3kg
Part No. 22-796680



**RIGID BASE 6
6 IN / 15.2 CM**

Net Weight: 2.8lb 1.3kg
Part No. 22-796070



**SWIVEL BASE 6
6 IN / 15.2 CM**

20° swivel base

Net Weight: 3.3lb 1.5kg
Part No. 22-796060



**HINGED BASE 6
6 IN / 15.2 CM**

45° hinged base

Net Weight: 3.8lb 1.7kg
Part No. 22-796140



CONTOUR BASE

Contoured to grip surfaces
dealing in vehicle stabilization
kits

Net Weight: 1.7lb 0.8kg
Part No. 22-796270



MULTI CHAIN BASE

Takes 3/8" (9.5mm) and
1/2" (12.7mm)

*Including square wire
section chains
Net Weight: 3.16lb 1.64kg
Part No. 22-796685



**RUBBER BASE
4 IN / 10.2 CM**

Great base for a sure grip

Net Weight: 2.7lb 1.2kg
Part No. 22-796190



**HINGED BASE WITH
ANCHOR RING
6 IN / 15.2 CM**

45° hinged base

Net Weight: 4.5lb 2.0kg
Part No. 22-796150



**RIGID BASE 12
12 IN / 30.5 CM**

Net Weight: 8.6lb 3.9kg
Part No. 22-796180A



**SWIVEL BASE 12
12 IN / 30.5 CM**

20° swivel base with eight
1 in / 2.5 cm picket holes

Net Weight: 9.3lb 4.2kg
Part No. 22-796180B



MULTI BASE

Can be used as a V Base,
Cone Base, Wedge Base and
will accept a 3/8" chain

Net Weight: 2.0lb 0.9kg
Part No. 22-796025



PARATECH

www.paratech.com

PARATECH HEADQUARTERS: P.O. BOX 1000, FRANKFORT, IL 60423 USA
TOLL FREE: +1 800 435 9358 PHONE: +1 815 469 3911 FAX: +1 815 469 7748 EMAIL: paratech@paratech.com

PARATECH EUROPE: P.O. BOX 174, 5260 ODENSE S, DENMARK
PHONE: +45 66 11 24 22 FAX: +45 66 11 32 EMAIL: paratech@paratech.dk



CERTIFICATE NO.
ISO9001:2008





PARATECH

LIFT ♦ SHIFT ♦ CONTAIN ♦ STABILIZE ♦ PENETRATE

MADE IN THE USA & USED WORLDWIDE

BASES & END PLATES



V BASE

The V Base has a 90° V that will fit onto any right angle. Features 2 nailing holes should it need to be nailed to a piece of wood used in other applications
Net Weight: 1.4lb 0.6kg
Part No. 22-796090



OFF SET CONE BASE

The Cone Base has a steel cone that will dig into sheet metal, concrete or asphalt
Net Weight: 1.2lb 0.5kg
Part No. 22-796560



CONVEX MULTI BASE

Multi-purpose vehicle stabilization with Chain Wedge for 3/8" chain, V-Base, Cone Base
Net Weight: 1.6lb 0.7kg
Part No. 22-796269



MONOPOD HEAD / PULLEY

MonoPod Head / Pulley is a base that was designed for blind shaft elevator rescue, trench rescues and high angle rescues
Net Weight: 7lb 3.2kg
Part No. 22-796540



MONOPOD / PULLEY ROOF PLATE

MonoPod / Pulley Roof for use in conjunction with the MonoPod Head / Pulley
24" x 12" / 61cm x 30.5cm
Net Weight: 14lb 6.4kg
Part No. 22-796570



MONOPOD / PULLEY ANGLE BASE

Designed originally for the MonoPod kit to be used in blind shaft elevator rescue but can be used in other locations where the angle base would fit



Net Weight: 7lb 3.2kg
Part No. 22-796590



CHANNEL BASE US:

4 IN x 4 IN / 10.2 CM x 10.2 CM

Part No. 22-796134



CHANNEL BASE METRIC:

4.3 IN x 6 IN / 10.9 CM x 15.2 CM

Part No. 22-796131



Used for structural collapse to support beams
Net Weight: 2.0lb 0.9kg



CHANNEL BASE US:

6 IN x 6 IN / 15.2 CM x 15.2 CM

Part No. 22-796136



CHANNEL BASE METRIC:

6.3 IN x 7 IN / 16 CM x 17.8 CM

Part No. 22-796133



Used for structural collapse to support beams
Net Weight: 2.5lb 1.1kg

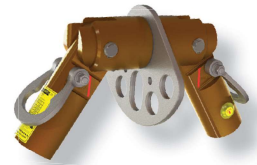


ANGLE BASE

The angle base can be used just like the 4x4 or 6x6 bases. Designed for use when you cannot make full contact around the header or sole Plate.



Net Weight: 1.6lb 0.7kg
Part No. 22-796092



BIPOD HEAD

The Bipod HEAD ("A" Frame/Gantry Head) is to be used in conjunction with the (2) bipod base Plates to create the Bipod ("A" Frame/Gantry) System



Net Weight: 33 lb 15 kg
Part No. 22-796820



BIPOD BASE

The Bipod Base Plate is a 12 in / 30.5 cm base Plate but is designed with the full articulating cup to be used as an "A" frame or Gantry System



Net Weight: 11.1lb 5.0kg
Part No. 22-796180E



HITCH BASE

Can be utilized by putting into a 2" hitch receiver and in conjunction with the MonoPod kit so you can have a high point anchor off of your vehicle



Net Weight: 13.4lb 6.1kg
Part No. 22-796575



ELEVATOR SUPPORT ARMS

Left and Right Elevator Support Arms used in conjunction with angled rubber base to lock elevator chair in position during rescues of people in stalled/stuck elevator cars



Net Weight: 8.5lb 3.9kg
Part No. 22-796260L or
Part No. 22-796260R



ANGLED RUBBER BASE

Angled rubber base used in conjunction with the elevator support arms lock elevator chair in position during rescues of people in stalled/stuck elevator cars



Net Weight: 1.7lb 0.8kg
Part No. 22-796266



CLAMP 335 & CLEVIS

Designed for use with the Flying Raker and Midpoint brace kit in conjunction with the Raker Kits



Net Weight: 5.0lb 2.3kg
Part No. 22-796330



TRIPOD HEAD

To be used in conjunction with either AcmeThread or LongShore struts to create a tripod



Net Weight: 9.0lb 4.1kg
Part No. 22-796010



VSK BASE 6

6 in / 15.2 cm base integrated with ratchet belt and anchor ring making vehicle stabilization quicker & easier



Net Weight: 18.5lb 8.4kg
Part No. 22-796331

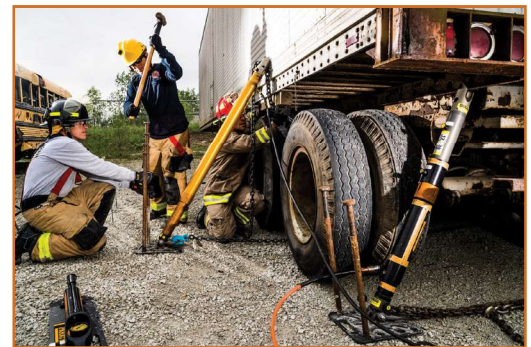


VSK BASE 12

12 in / 30.5 cm base integrated ratchet belt and anchor ring making vehicle stabilization quicker & easier



Net Weight: 23.5lb 10.6kg
Part No. 22-796308



PARATECH

www.paratech.com

PARATECH HEADQUARTERS: P.O. BOX 1000, FRANKFORT, IL 60423 USA
TOLL FREE: +1 800 435 9358 PHONE: +1 815 469 3911 FAX: +1 815 469 7748 EMAIL: paratech@paratech.com

PARATECH EUROPE: P.O. BOX 174, 5260 ODENSE S, DENMARK
PHONE: +45 66 11 24 22 FAX: +45 66 11 32 EMAIL: paratech@paratech.dk



CERTIFICATE NO. ISO9001:2008

