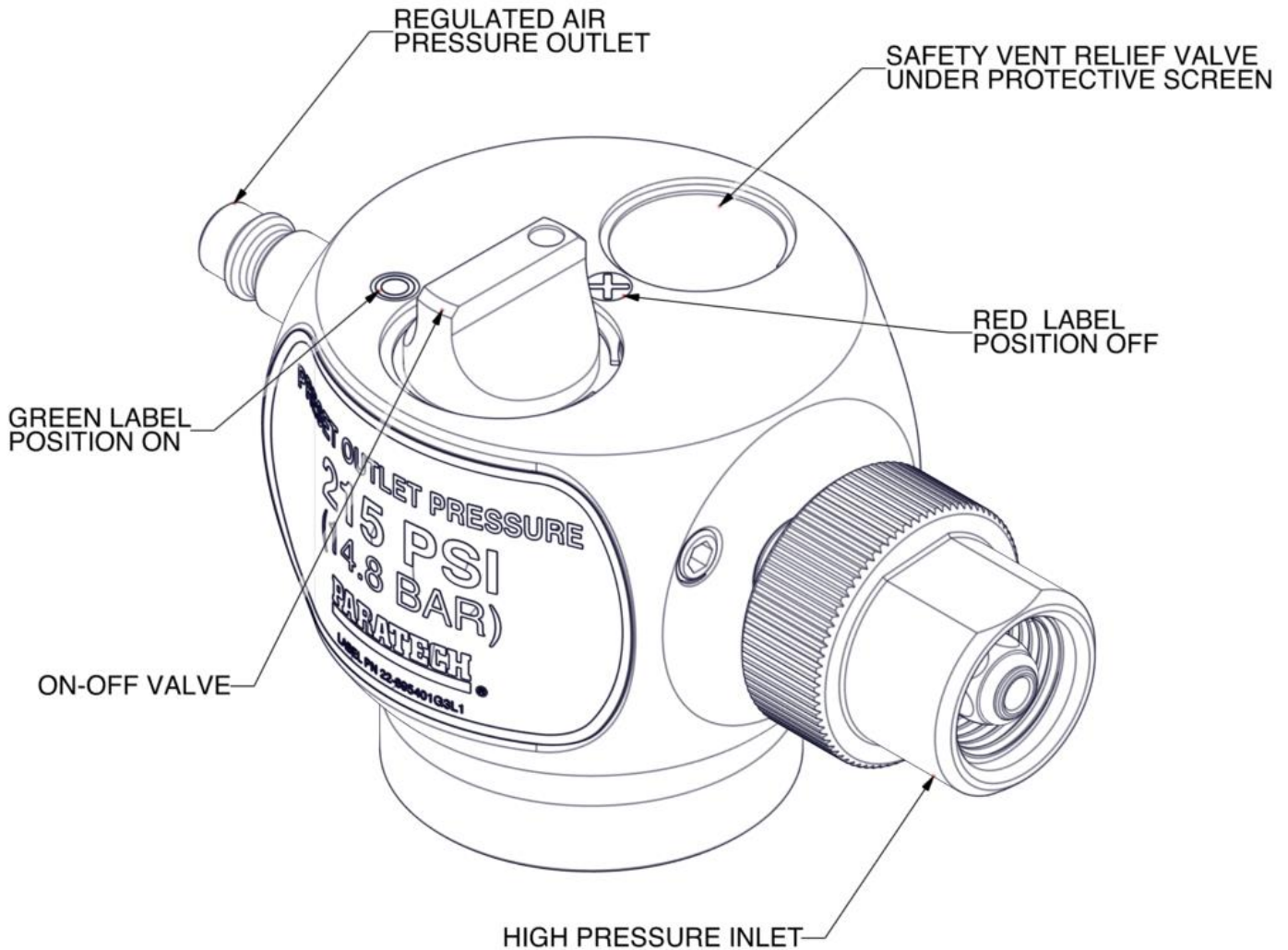
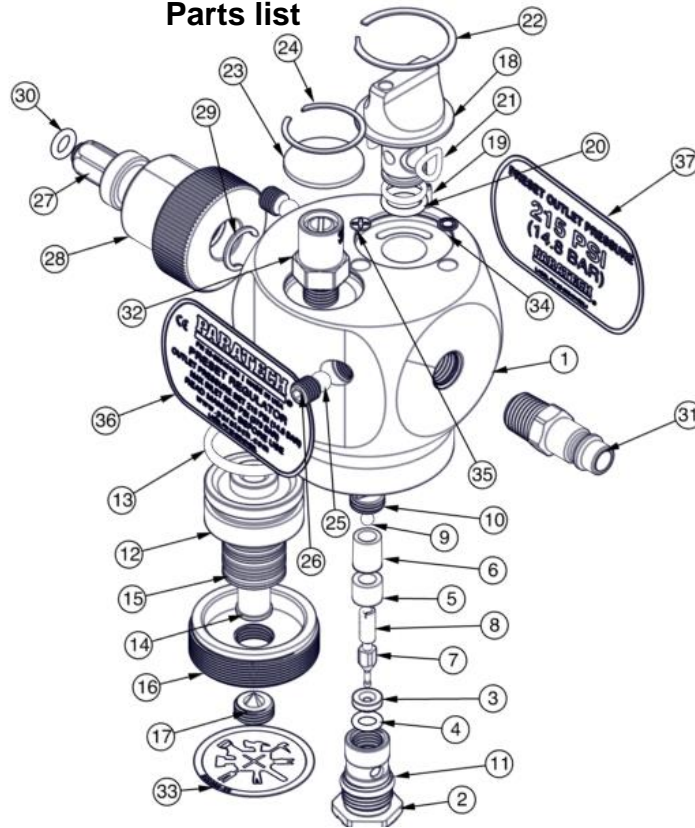


## 22-895401G3 ALB REGULATOR INSTRUCTION SHEET



**REFER TO OPERATION, PREVENTIVE MAINTENANCE AND PARTS  
MANUAL PN 22-895409 FOR PROPER USE WITH  
PARATECH'S RESCUE EQUIPMENT**

## 22-895401G3 ALB REGULATOR Parts list



| ITEM | QTY | P/N    | DESCRIPTION                    | ITEM | QTY | P/N        | DESCRIPTION                    |
|------|-----|--------|--------------------------------|------|-----|------------|--------------------------------|
| 1    | 1   | 895423 | BODY, REGULATOR G3, PRESET ALB | 20   | 2   | 550174     | O-RING AS-013 (7/16X.070) BN70 |
| 2    | 1   | 895413 | CARTRIDGE HOUSING, REG.        | 21   | 2   | 890489     | O-RING 5/16X.070 POLYURETH. 90 |
| 3    | 1   | 895412 | SEAT, MAIN, CARTR. REGULATOR   | 22   | 1   | 895218     | Ø1.25 INT RETAINING RING SS    |
| 4    | 1   | 895513 | O-RING AS-010 (1/4X.070) BN90  | 23   | 1   | 796V48     | Ø1" POROUS MEDIA DISC          |
| 5    | 1   | 895414 | SPACER FOR CARTRIDGE           | 24   | 1   | 796V43     | Ø1 LD INT RET RING SS          |
| 6    | 1   | 895415 | FILTER, SINTER. FOR REGULTR    | 25   | 2   | 895419     | Ø1/4" BRASS BALL               |
| 7    | 1   | 895411 | NEEDLE, MAIN REG VALVE, CARTR. | 26   | 2   | 890893     | 5/16-24 X 5/16 SCH SET SCR SS  |
| 8    | 1   | 895222 | SPRING, NEEDLE VALVE           | 27   | 1   | 895334     | NIPPLE 5500PSI CGA 347 SHORT   |
| 9    | 1   | 891135 | BALL 5/32 440-C SS GRADE 24    | 28   | 1   | 895336     | NUT, 5500PSI CGA 347 SHORT     |
| 10   | 1   | 895416 | END CAP, CARTRIDGE             | 29   | 1   | 015779     | RET. CRESCENT RING 1/2" SHAFT  |
| 11   | 1   | 890252 | O-RING AS-015 90BN (9/16X.070) | 30   | 1   | 550195     | O-RING 1/4X.070 POLYURETHANE90 |
| 12   | 1   | 895317 | PISTON, PRESET REG             | 31   | 1   | 890681     | NIPPLE WITH 1/4 NPTM           |
| 13   | 1   | 895247 | O-RING AS-121 1-1/16X.103 BN70 | 32   | 1   | 890250     | VENT RELIEF VALVE, 250 PSI     |
| 14   | 1   | 895325 | PIN, DISC GUIDE REG            | 33   | 1   | 895328     | LABEL, Ø1.5" PLATE COVER       |
| 15   | 10  | 895273 | DISC SPRNG 20X10.2X1MM L=1.55  | 34   | 1   | 8950N      | ROUND LABEL ON, GREEN G3       |
| 16   | 1   | 895329 | REGULATOR END CAP, PRESET G3   | 35   | 1   | 8950FF     | ROUND LABEL OFF, RED G3        |
| 17   | 1   | 895321 | ADJUSTING SCR, PRESET          | 36   | 1   | 895401G3L  | LABEL FOR G3 STRUT REGULATOR   |
| 18   | 1   | 890498 | KNOB, ON/OFF REGULATOR G3      | 37   | 1   | 895401G3L1 | LABEL BACK PRESET              |
| 19   | 1   | 890935 | SPRING PIN 3/32 X 5/16 S.S.    |      |     |            |                                |