

LUNAR Colour Palette Guide



LUNAR Default Palettes

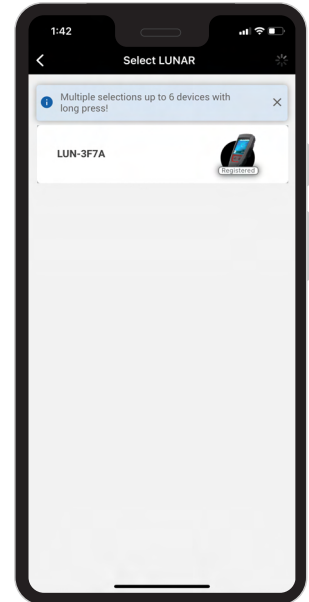
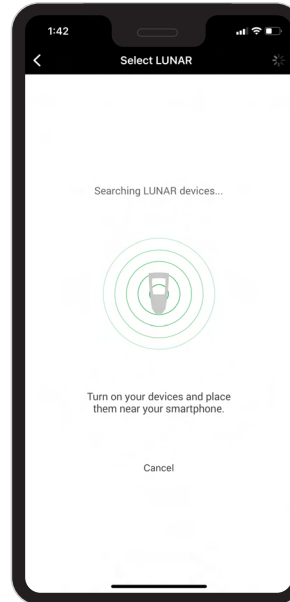
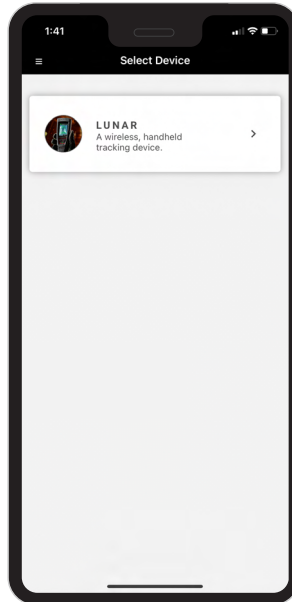
LUNAR can have two palettes configured at a time, consisting of:

- 1 default palette, which loads first, and
- 1 additional palette

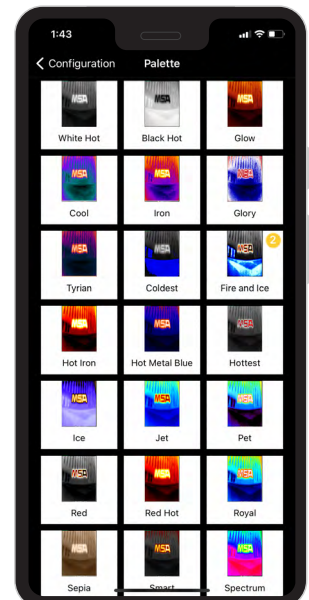
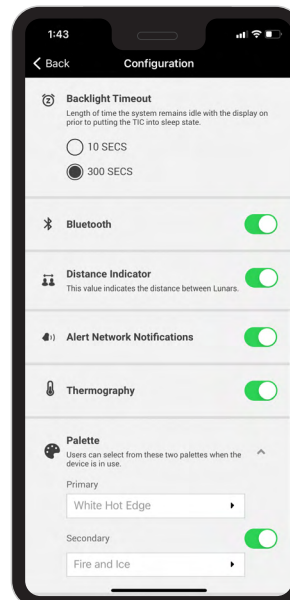
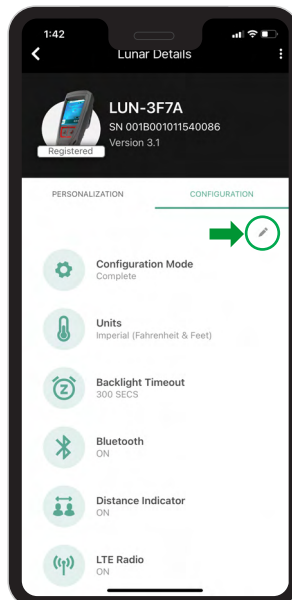
The factory configured default set of palettes is:

- **White Hot Edge Detection** (*primary*)
- **Fire & Ice** (*secondary*)

How to Change Palettes Using FireGrid Configure App



1 Open FireGrid Configure application; select LUNAR. Refer to the manual to bring LUNAR into maintenance menu. Once your LUNAR device is recognized on the application, select your device.



2 Select the *Configuration* tab on the screen, then click on the grey editing pen right below.

3 You are now able to edit the settings on your LUNAR device. To change colour palettes, scroll to the bottom of the screen and select the *Palette* option.

4 Select which palette you would like to replace (*Primary* or *Secondary*). By clicking each option, you can select from all the available palette options.



White Hot Edge Detection (*primary default palette*)

WHEN YOU GO IN, WE GO IN WITH YOU.

#	Palette Name	Application	Colour Scale	Hot Object(s) Colour(s)	Cold Object(s) Colours(s)	Spectrum Preview
0	WHITE HOT	Structural firefighting, initial size up, search and rescue. Ideal for scenes with a wide temperature span in shifting landscapes and urban areas.	Black, White	White	Black	
1	BLACK HOT	Water rescue, HazMat, search and rescue	Black, White	Black	White	
2	GLOW	General-purpose palette: investigative	White, Yellow, Orange, Black	White & Yellow	Black	
3	COOL	General-purpose palette: investigative	White, Orange, Purple, Blue, Black	White & Orange	Black & Blue	
4	IRON	General-purpose palette that quickly identifies thermal anomalies and body heat	Orange, Yellow, Purple, Blue, Black	Yellow & Orange	Black & Blue	
5	GLORY	General-purpose palette: investigative	White, Red, Blue, Dark Blue	White & Red	Dark Blue & Blue	
6	TYRIAN	General-purpose palette: investigative	White, Orange, Purple, Blue, Black	White & Orange	Black & Blue	
7	COLDEST	Scene size up, salvage, overhaul	White, Gray, Blue	White	Blue	
8	FIRE ICE	Structural firefighting: locating fire source (size-up, overhaul), locating victims, locating fire extension; search and rescue; HazMat scene size-up.	Red, Yellow, Blue, Black, Gray	Red & Yellow	Black & Gray	
9	HOT IRON	General-purpose palette: quickly identifies thermal anomalies and body heat	Yellow, Red, Black	Yellow	Black	
10	HOT BLUE	General-purpose palette: quickly identifies thermal anomalies and body heat	White, Orange, Red, Blue, Black	White & Orange	Black & Blue	
11	HOTTEST	General-purpose palette: quickly identifies thermal anomalies and body heat	Red, White, Gray, Black	Red	Black	
12	ICE	General-purpose palette: quickly identifies thermal anomalies and body heat	Yellow, Black, Blue	Yellow	Blue	
13	JET	General-purpose palette: quickly identifies thermal anomalies and body heat	Red, Yellow, Blue	Red & Yellow	Blue	
14	PET	General-purpose palette: investigative	Rainbow	White & Pink	Dark Blue & Blue	
15	RED	General-purpose palette: quickly identifies thermal anomalies and body heat	Black, Red, Yellow, White, Gray	Black, Red, & Yellow	Gray	
16	RED HOT	Scene size up, salvage, overhaul	White, Yellow, Red, Black	White & Yellow	Black & Red	
17	ROYAL	General-purpose palette: investigative	Rainbow	White & Gray	Black & Blue	
18	SEPIA	Instances of prolonged thermal surveillance	White, Sepia, Black	White	Black	
19	SMART	Structural firefighting: locating fire source (size-up, overhaul), locating victims, locating fire extension; search and rescue; HazMat scene size-up	Yellow, Red, Gray, Black	Yellow & Red	Black	
20	SPECTRUM	Scenes with minimal heat variance. Detects objects with slight temperature changes despite low-contrast conditions.	Yellow, Green, Cyan, Blue, Pink, Red	Yellow & Green	Red & Pink	
21	YELLOW HOT	Structural firefighting: locating fire source (size-up, overhaul), locating victims, locating fire extension; search and rescue; HazMat scene size-up	White, Yellow, Black	White	Black	
22	WHITE HOT EDGE	General-purpose palette: quickly identifies thermal anomalies and body heat	Black, White, Green Outline	White, Green Edge	Black	

LUNAR Colour Palette Guide



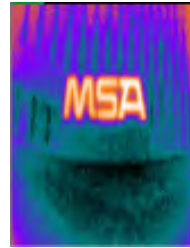
0 - WHITE HOT



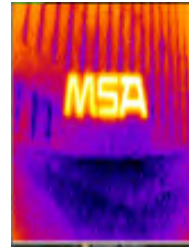
1 - BLACK HOT



2 - GLOW



3 - COOL



4 - IRON



5 - GLORY



6 - TYRIAN



7 - COLDEST



8 - FIRE ICE



9 - HOT IRON



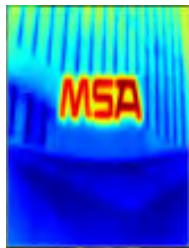
10 - HOT BLUE



11 - HOTTEST



12 - ICE



13 - JET



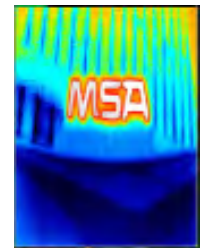
14 - PET



15 - RED



16 - RED HOT



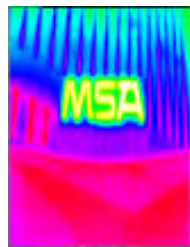
17 - ROYAL



18 - SEPIA



19 - SMART



20 - SPECTRUM



21 - YELLOW HOT



22 - WHITE HOT EDGE

Note: This Bulletin contains only a general description of the products shown. While product uses and performance capabilities are generally described, the products shall not, under any circumstances, be used by untrained or unqualified individuals. The products shall not be used until the product instructions/user manual, which contains detailed information concerning the proper use and care of the products, including any warnings or cautions, have been thoroughly read and understood. Specifications are subject to change without prior notice.

MSA operates in over 40 countries worldwide. To find an MSA office near you, please visit [MSAafety.com/offices](https://www.MSAafety.com/offices).