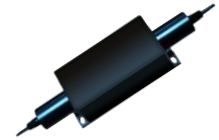


# 0101 Isolator

L7300-S



## 850 nm In-line Isolator, SM

The L7300-S has very low insertion loss, high return loss and high stability & reliability. It can be used for raman fiber laser, testing instrument and ultra-fast fiber laser.

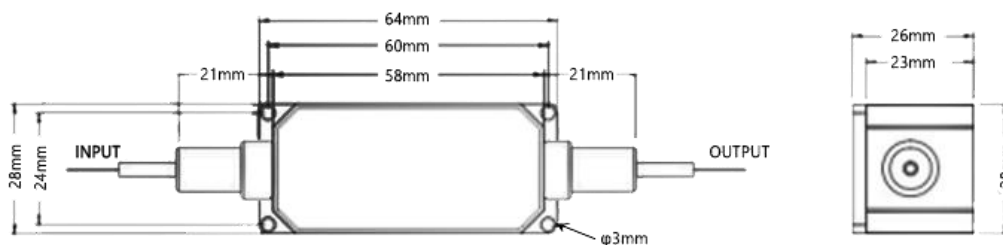
### FEATURES

- Low Insertion Loss
- High Return Loss
- High Stability & Reliability

### USE IN

- Testing Instrument
- Ultra-fast Fiber Laser
- Raman Fiber Laser

### MECHANICAL DRAWING



Operation Wavelength	850±20 nm
Insertion Loss	1.3 dB typ.; 1.6 dB max.
Isolation	26 dB typ.; 22 dB min.
Polarization Dependent Loss	0.15 dB max.
Return Loss	50 dB min.
Power Handling	300 mW
Fiber Type	Hi 780
Dimension	64x28x26 mm
Operating Temperature	0°C to +65°C
Storage Temperature	-20°C to +85°C

**Order notes to our customers:** The default parameters are as follows. For special needs, please contact sales.

- 1) Connector FC/APC, 900 um, 1 m by default for all devices except for high power devices.
- 2) Slow axis working, fast axis blocked, connector key is aligned to slow axis by default for PM devices.