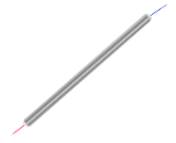


0202 Thin Film Coupler



1x2 980 nm Coupler, 2%/98%

The C1026-S is a 1x2 980 nm, 2%/98% coupler. This highly reliable coupler offers very low insertion loss, low polarization dependence and excellent environmental stability. It can be used for optical communication, HFC & fiber sensors, fiber laser, optical amplifier and photonics integration.

FEATURES

- Low Excess Loss
- Low Insertion Loss
- Low PDL
- High Stability and Reliability

USE IN

- Optical Communication
- Local Area Network
- FTTH & LAN
- HFC & Fiber Sensors

		970 nm	980 nm	990 nm
Insertion Loss @25°C	Output	0.12 dB	0.13 dB	0.14 dB
	Tap	19.31 dB	19.24 dB	19.17 dB
Coupler Ratio @25°C	Output	98.8%	98.8%	98.8%
	Tap	1.2%	1.2%	1.2%