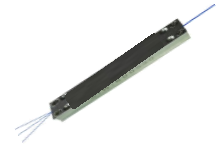


0109 Polarization Beam Combiner

B2100-P



980/1060 (1+2)x1 PM Pump Combiner, Nufern PLMA-GDF-10/125-M

The combiner features exceptional optical characteristics. These devices can combine 2 pump lasers and 1 signal channel into one fiber and create a high power pump laser source, delivering the combined power for applications in industrial, military, medical and telecommunications markets.

FEATURES

- High Power Transfer Efficiency
- Low Signal Insertion Loss
- High PER
- High Power Package
- Freely Selectable Signal and Pump Wavelength
- Custom Configurations Available

USE IN

- Pumping of Fiber Laser and Amplifier
- Pumping of Multi-core and Large Mode Area Fibers (LMA)
- Pump Combiner for Nd-, Yb-, Er-, Ho-, Tm-Fiber
- Industrial, Telecommunication, Biomedical,
- Metrology, Life Science, Imaging, Quantum Optics
- Gravitational Wave Detection, Atom Cooling and Trapping

Signal Operating Wavelengths	1020 nm to 1080 nm
Pump Operating Wavelengths	780 nm to 1000 nm
Number of Multimode Inputs	2
Number of Signal Ports	1
Number of Output Ports	1
Pump Input Fiber	105/125 μm, NA 0.22
Signal & Output Fiber	Nufern PLMA-GDF-10/125-M
Pump Fiber	Nufern MM-S105/125-22A
Pump Efficiency	90% min.
Signal Insertion Loss	0.5 dB max.
Polarization Extinction Ratio	18 dB min.
Power per Multimode Input	50 W
Optical Return Loss - Pumps	40 dB
Operating Temperature	0°C to +75°C
Storage Temperature	-40°C to +85°C