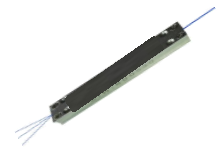


# 0109 Polarization Beam Combiner

**B2000-P**



## 980/1060 (1+1)x1 Pump & Signal Combiner

The combiner features exceptional optical characteristics. These devices can combine 2 pump lasers and 1 signal channel into one fiber and create a high power pump laser source, delivering the combined power for applications in industrial, military, medical and telecommunications markets. It has a heat sink package and a hole for temperature monitoring.

### FEATURES

- High Power Transfer Efficiency
- Low Signal Insertion Loss
- High PER
- High Power Package
- Freely Selectable Signal and Pump Wavelength
- Custom Configurations Available

### USE IN

- Pumping of Fiber Laser and Amplifier
- Pumping of Multi-core and Large Mode Area Fibers (LMA)
- Pump Combiner for Nd-, Yb-, Er-, Ho-, Tm-Fiber
- Industrial, Telecommunication, Biomedical,
- Metrology, Life Science, Imaging, Quantum Optics
- Gravitational Wave Detection, Atom Cooling and Trapping

Signal Operating Wavelengths	1020 nm to 1080 nm
Pump Operating Wavelengths	780 nm to 1000 nm
Number of Multimode Inputs	2
Number of Signal Ports	1
Number of Output Ports	1
Pump Input Fiber	105/125 μm, NA 0.22
Signal Input Fiber	PM 10/125 μm, NA 0.08/0.46
Output Fiber	PM 10/125 μm, NA 0.08/0.46
Pump Efficiency	90% min.
Signal Insertion Loss	0.5 dB max.
Polarization Extinction Ratio	18 dB min.
Power per Multimode Input	50 W
Optical Return Loss-Pumps	40 dB
Operating Temperature	0°C to +75°C
Storage Temperature	-40°C to +85°C