

## EXCITING NEWS:

### W.N. DESHERBININ IS NOW A PART OF CLASSIC LAMP PARTS

Former W.N. deSherbinin customers are encouraged to register for online access at [www.ClassicLampParts.com](http://www.ClassicLampParts.com). Make sure to request a copy of our part number cross-reference list to obtain Classic Lamp Parts part numbers.

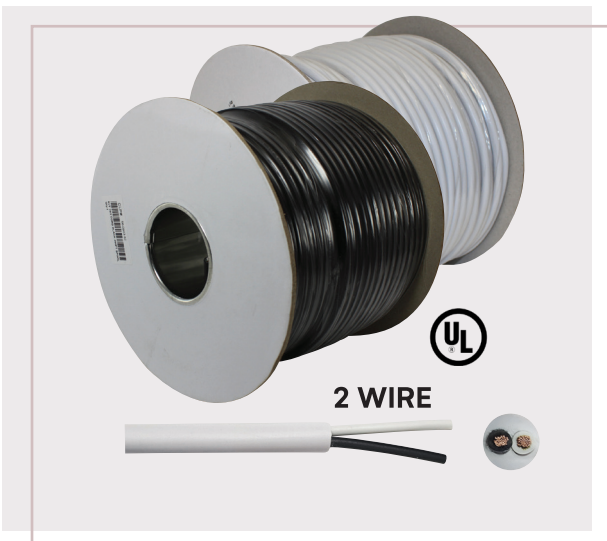
## CLASSIC LAMP PARTS IS NOW AN AUTHORIZED UL REPACKAGER!

We're proud to announce our recognition as an Approved UL Re-Packager, a testament to our commitment to the lighting industry. Now, you can obtain UL labeled product in smaller quantities, eliminating the need to purchase master cases.

*While not all our products are currently repackaged, we're ready to accommodate your needs. Simply let us know if you require repackaged products, and we'll ensure they're ready for you. Your satisfaction is our priority!*



## WIRE

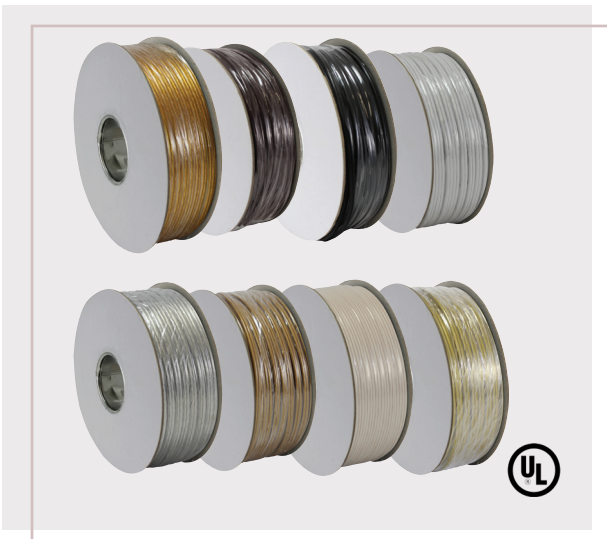


### SVT-2 Pendant and Appliance Cord

- #18    ■ 105°    ■ 300V
- Will Slip 1/8 IPS

#### Round Wire 100 Foot Spools

Item	Color	Wire	Regular Price ea.	Sale Price ea.
56-0921-40	White	2-Wire	\$ 39.00	\$ 33.00
56-0921-45	Brown	2-Wire	\$ 39.00	\$ 33.00
56-0921-47	Clear	2-Wire	\$ 47.00	\$ 39.00
56-0921-50	Black	2-Wire	\$ 39.00	\$ 33.00



### SPT-1 Lamp and Fixture Cord

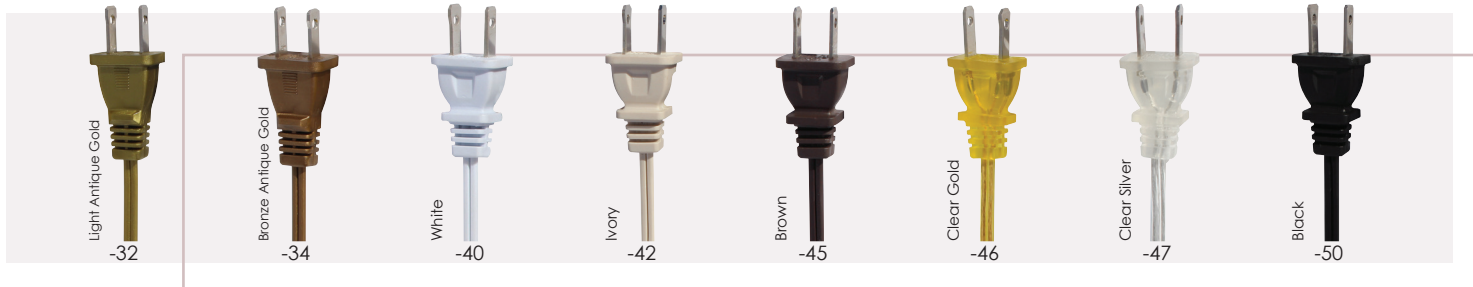
- #18/2 105° Wire    ■ Rated 300V

#### 250 Foot Spools

Item	Color	Regular Price ea.	Sale Price ea.
56-0810-46	Clear Gold	\$ 58.00	\$ 54.00
56-0811-45	Brown	\$ 56.00	\$ 53.00
56-0812-50	Black	\$ 56.00	\$ 53.00
56-0813-40	White	\$ 56.00	\$ 53.00
56-0814-47	Clear Silver	\$ 59.00	\$ 55.00
56-0815-34	Bronze Antique Gold	\$ 58.00	\$ 54.00
56-0816-42	Ivory	\$ 58.00	\$ 54.00
56-0817-32	Antique Gold	\$ 58.00	\$ 54.00

SPOOLS

# CORD SETS AND WIRE



## Vinyl SPT Cord Set With Molded on Plugs

- No. 18/2 Wire not Hanked
- Ends Stripped 3/4" with Tinned Ends
- Polarized Plugs

### SPT-1

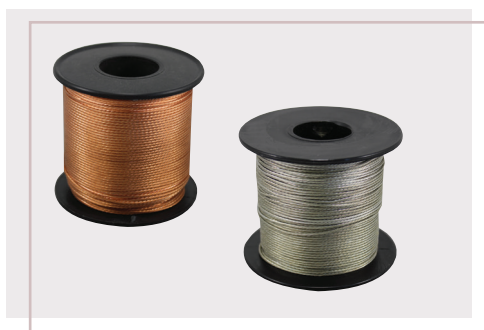


Item	Color	Length	Regular Price ea.	Sale Price ea.
56-1861-32	Antique Gold	10'	\$ 3.50	\$ 2.50
56-1861-34	Bronze	10'	\$ 3.50	\$ 2.50
56-1861-40	White	10'	\$ 3.50	\$ 2.50
56-1861-42	Ivory	10'	\$ 3.50	\$ 2.50
56-1861-45	Brown	10'	\$ 3.50	\$ 2.50
56-1861-46	Clear Gold	10'	\$ 3.50	\$ 2.50
56-1861-47	Clear Silver	10'	\$ 3.50	\$ 2.50
56-1861-50	Black	10'	\$ 3.50	\$ 2.50

### SPT-2



Item	Color	Length	Regular Price ea.	Sale Price ea.
56-1950-32	Antique Gold	8'	\$ 2.60	\$ 2.00
56-1950-40	White	8'	\$ 2.60	\$ 2.00
56-1950-42	Ivory	8'	\$ 2.60	\$ 2.00
56-1950-45	Brown	8'	\$ 2.60	\$ 2.00
56-1950-46	Clear Gold	8'	\$ 2.60	\$ 2.00
56-1956-47	Clear Silver	8'	\$ 3.20	\$ 2.50
56-1954-50	Black	8'	\$ 2.60	\$ 2.00



## Copper Braided Grounding Wire

- 18 Gauge
- Not UL Listed

### 250 Foot

Item	Metal	Regular Price ea.	Sale Price ea.
56-0835-06	Copper	\$ 29.00	\$ 26.00
56-0836-06	Tinned	\$ 31.00	\$ 28.00



## Rayon Covered SVT Cord Sets

- Molded Plugs
- Stripped and Tinned
- 10.5 Feet Cord Set with 9 Feet of Rayon Covered Wire



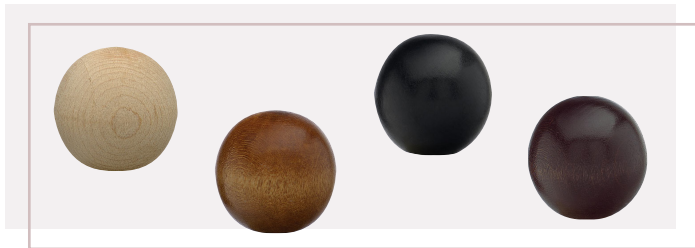
### SVT/2 - 18 Gauge (Will slip through 1/8IP Nipple)

Item	Rayon Color	Plug color	Regular Price ea.	Sale Price ea.
56-1810-45	Brown	Brown	\$ 8.00	\$ 5.90
56-1810-51	Red	Black	\$ 8.00	\$ 5.90
56-1810-71	Black and White	Black	\$ 8.00	\$ 5.90
56-1810-72	Red and White	Black	\$ 8.00	\$ 5.90

# :: NEW ITEMS IN STOCK! ::

## READY TO SHIP NOW!!!

**NEW FINIALS**



Finials go with wood bases sold on page 80 of our catalog.

### Wooden Ball Finials

■ 1/4" - 27 Tap      ■ 1-11/32" Width

Item	Finish	Regular Price ea.	Sale Price ea.
20-2555-09	Unfinished	\$ 3.00	\$ 2.40
20-2555-37	Brown	\$ 3.10	\$ 2.50
20-2555-50	Black	\$ 3.10	\$ 2.50
20-2555-51	Mahogany	\$ 3.10	\$ 2.50



### Brass Ball Finials

■ 1-3/8"H x 7/8"D      ■ Tap 1/4"-27

Item	Color	Regular Price ea.	Sale Price ea.
20-0218-01	Polished & Lacquered	\$ 5.95	\$ 4.95
20-0218-05	Satin Brass	\$ 5.95	\$ 4.95
20-0218-20	Polished Nickel	\$ 5.95	\$ 4.95
20-0218-30	Antique Brass	\$ 5.95	\$ 4.95

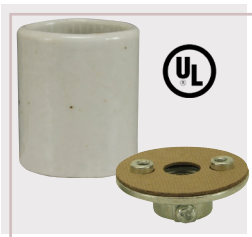


### Brass Ball Finials

■ 1-1/2"H x 1"D      ■ Tap 1/4"-27

Item	Color	Regular Price ea.	Sale Price ea.
20-0220-01	Polished & Lacquered	\$ 6.95	\$ 5.90
20-0220-05	Satin Brass	\$ 6.95	\$ 5.90
20-0220-20	Polished Nickel	\$ 6.95	\$ 5.90
20-0220-30	Antique Brass	\$ 6.95	\$ 5.90

# :: SOCKETS IN STOCK!!! ::



### Medium Base Socket, Glazed Porcelain with Heavy Duty Metal Cap 1/8 IPS

■ Copper Nickel Plated Screw Shell      ■ Screw Terminals  
■ Two Captive #6-32 screws      ■ Rated 660W - 250V

Item	Finish	Regular Price ea.	Sale Price ea.
40-0074-99	White	\$ 1.95	\$ 1.55



### Medium Base Hickey Socket Unglazed Porcelain

■ Aluminum Screw Shell      ■ Screw Terminals  
■ Two Captive #6-32 screws      ■ Rated 660W - 250V

Item	Hickey	Regular Price ea.	Sale Price ea.
40-0080-99	1/8 IPS Hickey	\$ 1.10	\$ 0.95

# INTERIORS

### On/Off Pull Chain Electrolier

■ Rated 660W - 250V

Item	Finish	Regular Price ea.	Sale Price ea.
40-0061-10	Brass	\$ 1.95	\$ 1.71



### Keyless Interior - Short Electrolier

■ Rated 660W - 250V

Item	Regular Price ea.	Sale Price ea.
40-0054-99	\$ 1.10	\$ 0.90



### Turn Knob Electrolier

■ Rated 250W - 250V

Item	Version	Regular Price ea.	Sale Price ea.
40-0057-99	On/Off	\$ 1.30	\$ 1.05
40-0059-99	3 Way	\$ 1.67	\$ 1.05



### Push-Through Electrolier

■ Rated 660W - 250V

Item	Regular Price ea.	Sale Price ea.
40-0055-99	\$ 1.40	\$ 0.99

# 2-LIGHT CLUSTERS

## Medium Base

- Pre-Wired with Adjustable Pull Chain    ■ 1/4 IPS Body Thread (Bottom)
- 1/8 IPS Threaded Stem with Knurled Nut    ■ Rated 150W-1200V

Item	Finish	Price ea.	10 pieces or more price ea.	20 pieces or more price ea.
40-0619-01	Polished & Lacquered	\$ 34.50	\$ 32.50	\$ 31.90
40-0619-02	Polished Brass Only	\$ 32.50	\$ 30.50	\$ 29.90
40-0619-20	Polished Nickel	\$ 35.50	\$ 33.50	\$ 32.90
40-0619-30	Antique Brass & Lacquered	\$ 35.50	\$ 33.50	\$ 32.90



# METAL SHELL SOCKETS



## MB Polished Gilt Turn Knob Electrolier

- Aluminum Screw Shell                    ■ with Set Screws
- 1/8 IPS Cap                                ■ Rated 250W - 250V

Item	Version	Regular Price ea.	Sale Price ea.
40-0040-14	On/Off	\$ 1.95	\$ 1.65
40-0025-14	3 Way	\$ 2.00	\$ 1.55



## MB Short Keyless Socket

- with Set Screws                    ■ 1/8 IPS Cap
- Rated 660W - 250V

Item	Finish	Regular Price ea.	Sale Price ea.
40-0015-14	Polished Gilt	\$ 2.20	\$ 1.65



## MB Push-Thru Electrolier

- with Set Screws                    ■ 1/8 IPS Cap
- Rated 250W - 250V

Item	Finish	Regular Price ea.	Sale Price ea.
40-0020-14	Polished Gilt	\$ 2.20	\$ 1.75

Prices valid March 1st, 2024 Through May 31st, 2024

E-Mail for purchase orders, product inquiries, and quote requests: [CustomerService@ClassicLampParts.com](mailto:CustomerService@ClassicLampParts.com)