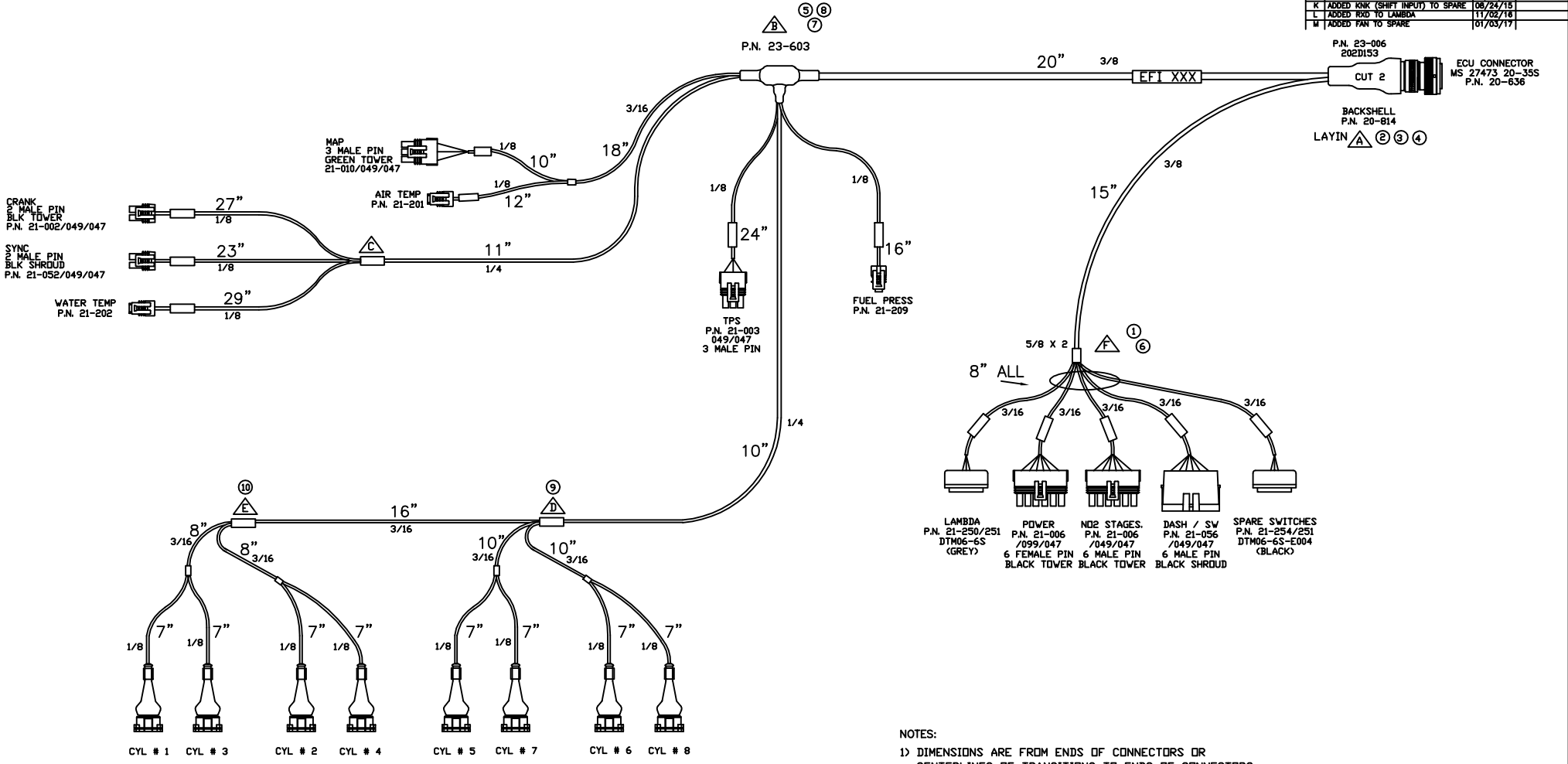




NOTICE  
 THIS DRAWING IS CONFIDENTIAL AND IS SUPPLIED ON THE EXPRESS  
 CONDITION THAT IT SHALL NOT BE LOANED, COPIED OR DISCLOSED TO  
 ANY OTHER PERSON OR USED FOR ANY PURPOSE WITHOUT THE PRIOR  
 WRITTEN CONSENT OF EFI TECHNOLOGY, INC. CA

REVISIONS			
LTR	DESCRIPTION	DATE	APPROVED
	INITIAL RELEASE	04-14-98	
A	ADDED MAP SW. SPEED, 2 BOOTS	05-21-99	
B	MAP SW MOVED TO "SPEED/SW" CONN.	08-23-99	
C	CONVERTED TO X3	08/15/09	
D	UPDATED SWITCH WIRES	08/01/11	
E	MOVED SW/S WIRE TO NOS CONNECTOR	04/08/13	
F	ADD BOOST SW. TO LAMBDA CONN.	10/07/14	
G	RE-PIN LAMBDA, ADD STAGE 6	01/14/15	
H	ADD R.WHEEL & SPARES CONN.	04/02/15	
J	MOVED LAMBDA 12V TO VEM	08/11/15	
K	ADDED KNK (SHIFT INPUT) TO SPARE	08/24/15	
L	ADDED RXD TO LAMBDA	11/02/16	
M	ADDED FAN TO SPARE	01/03/17	



- NOTES:
- 1) DIMENSIONS ARE FROM ENDS OF CONNECTORS OR CENTERLINES OF TRANSITIONS TO ENDS OF CONNECTORS
  - 2) SOLDER ALL NON MILL SPEC CONNECTORS
  - 3) LOCTITE BACKSHELLS USE SMALL AMOUNT
  - 4) LOCATE "EFI" LABEL APPROX. AS SHOWN.
  - 5) SEAL EPOXY ALL RAYCHEM BOOTS AND TRANSITIONS
  - 6) SPLICE LOCATIONS IDENTIFIED BY △
  - 7) NTRF AND EPOXY AS REQUIRED
  - 8) LABEL USING STANDARD LABELS

CUSTOMER APPROVAL:		XTR ECU 6 STAGE ENGINE HARNESS LAYOUT FIRING ORDER 18736542	
		DATE: 01/03/17	
CHECKED BY: M	DATE: 54-125L	DATE: 01/03/17	
DO NOT SCALE DRAWING		SHEET NO: 1 OF 1	