



HUSQVARNA 578BTF

The machine is designed for removal of combustible material and to control smaller grass fires.



Fuel hose protection

Sturdy rubber protector minimises risk of fuel hoses getting torn off by branches.

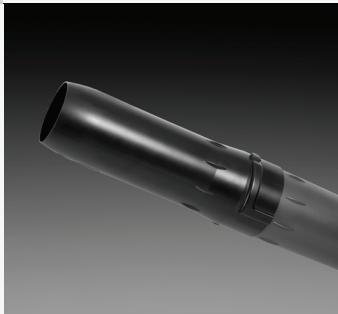


Adjustable handles

Adjustable handles for superior comfort.

Heat-resistant nozzle

High melting point of the nozzle material makes the blower tube less vulnerable to heat.



Easier cold starting

Starting a cold engine requires less effort thanks to the air purge.



FEATURES

- Heat-resistant nozzle
- Adjustable handle increased comfort
- Fuel hose protection
- Air purge for easier cold starting
- X-Torq® engine cuts emission and fuel consumption

Technical Specifications	
CAPACITY	
Air flow in housing	25 m ³ /min
Air flow in pipe	25 m ³ /min
Air speed	100 m/s
Air speed (round nozzle)	100 m/s
Blow speed	352.8 km/h
Blowing Force	33 N
Idling speed	2000 rpm
Idling upper limit	2200 rpm
Maximum power speed	8000 rpm
Power output	3.14 kW
Racing speed lower limit	7100 rpm
Torque, max.	4.05 Nm
Torque, max. at rpm	7200 rpm
CERTIFICATIONS	
#Approved according to CE	No
Cert machine dir. 2006/42/EC Decl. No.	No
DIMENSIONS	
Article gross weight	13500 g
Article net weight	10800 g
Tube diameter	74 mm
Tube length	1294 mm
Weight	10.5 kg
ENGINE	
Cylinder bore	51 mm
Cylinder displacement	75.6 cm ³
Cylinder stroke	37 mm
Electrode gap	0.6 mm
Engine Family CARB	No
Engine Family EPA	No
Fuel tank volume	2.2 l
Fuel consumption	410 g/kWh
Idling speed	2000 rpm
Ignition module air gap	0.3 mm
Maximum power speed	8000 rpm
Power output	3.14 kW
Spark plug	NGK CMR7H
EQUIPMENT	
OEM Harness	Standard double harness
OEM Vacuum Kit	No
LUBRICANTS	
Fuel consumption	410 g/kWh
Fuel tank volume	2.2 l
Lubricant type	Husqvarna 2 stroke or equiv. at 50:1
Power source	Petrol
Power/fuel type	Petrol
MATERIALS	
Master pack: Paper + Cardboard	0 g
Metal total	0 g
Paper + Cardboard total	0 g
PE total	0 g
PET total	0 g
Plastic foil	0 g
Plastic rigid	0 g
Plastic total	0 g
PS/EPS/HIPS total	0 g
PACKAGING	
Packaging height	540 mm
Packaging length	500 mm
Packaging volume	97.2 dm ³
Packaging width	360 mm
Quantity in Master pack	1
EMISSION DATA CARB	
Engine Family CARB	No
SOUND AND NOISE	
Sound power level, guaranteed (LWA)	112 dB(A)
Sound power level, measured	110 dB(A)
Sound pressure (15m)	77 dB(A)
Sound pressure level at operators ear	98 dB(A)

Technical Specifications

VIBRATION	
Daily Vibration (Aeqv)	1.6 m/s ²
Daily Vibration Exposure (A8)	1.6 m/s ²
Daily Vibration Time (Time factor)	2 h
Equivalent vibration level (ahv, eq) handle	1.6 m/s ²

ACCESSORIES



PROTECTIVE GLASSES, CLEAR
544 96 38-01