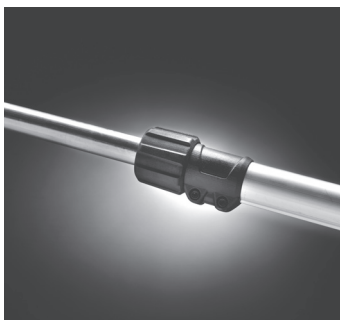




Husqvarna 525PT5S

Designed for professionals, the Husqvarna 525PT5S pole saw with telescopic shaft offers our longest reach, with excellent ergonomics and superior balance to help you achieve high-end results with minimum effort. Easy to manoeuvre, its X-Torq® engine ensures rapid acceleration and high torque with low emissions and low fuel consumption.



Telescopic tube

The tube has a telescopic function for quick cutting height adjustment

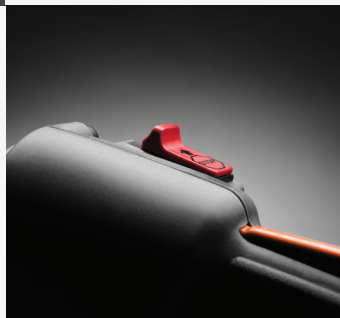


Intuitive controls

The choke and purge are easy to reach and understand.

Auto return stop switch

Stop switch automatically resets to the ON position for trouble-free starting.



Magnesium clutch housing

Robust magnesium clutch housing for tough professional use, ensuring a long service life.



FEATURES

- Auto return stop switch for easy starting
- Intuitive controls
- Telescopic tube for quick cutting height adjustment
- Magnesium clutch housing ensures long service life
- Rear impact guard
- Adjustable, automatic chain lubrication
- Air purge for easier cold starting
- Efficient air filter
- Easy to service and maintain starter
- Skid plate for engine protection
- X-Torq® engine cuts emission and fuel consumption

Technical Specifications

CAPACITY	
Clutch engagement speed (± 120)	3850 rpm
Clutch engagement upper limit	5800 rpm
Idling speed	3000 rpm
Idling upper limit	3800 rpm
Maximum power speed	8500 rpm
Power output	1.0 kW
Racing speed lower limit	11200 rpm
DIMENSIONS	
Article gross weight	10148 g
Article net weight	7470 g
Bar length	30 mm
Full length, including cutting equipment	402 cm
Length, extended, including cutting equipment	402 cm
Length, transportation mode - metric	287 cm
Size	10"
Tube diameter	38 mm
Tube length	3350 mm
Weight (excl. cutting equipment)	7 kg
ENGINE	
Cylinder bore	34 mm
Cylinder displacement	25.4 cm ³
Cylinder stroke	28 mm
Idling speed	3000 rpm
Idling upper limit	3800 rpm
EQUIPMENT	
Chain type	H00
Connected digital function set (calc)	FMS : Released 2019-01-01
Gear ratio	1.06
Pitch	1/4"
Source system	PAID
LUBRICANT	
Fuel consumption	395 g/kWh
Fuel consumption	0.395 kg/h
Fuel tank volume	0.51 l
Lubricant type	Husqvarna 2 stroke or equiv. at 50:1
Oil tank volume	0.14 l
Power/fuel type	Gasoline
MATERIALS	
Master pack: Paper + Cardboard	0 g
Metal total	20 g
Paper + Cardboard total	15700 g
PE foil	500 g
PE total	500 g
PET total	0 g
Plastic foil	500 g
Plastic rigid	0 g
Plastic total	500 g
PS/EPS/HIPS total	0 g
PACKAGING	
Packaging height	280 mm
Packaging length	2460 mm
Packaging volume	206.64 dm ³
Packaging width	300 mm
Pallet layers	4
Quantity in Master pack	1
SOUND AND NOISE	
Sound power level, guaranteed (LWA)	107 dB(A)
Sound power level, measured	107 dB(A)
Sound pressure level at operators ear	89 dB(A)
VIBRATION	
Daily Vibration (Aeqv)	6.7 m/s ²
Daily Vibration Exposure (A8)	1.68 m/s ²
Daily Vibration Time (Time factor)	0.5 h
Equivalent vibration level,(ahv. eq), front handle, collapsed	6.3 m/s ²

Technical Specifications

Equivalent vibration level(ahv, eq), front handle, extended	4.1 m/s ²
Equivalent vibration level(ahv, eq), rear handle, collapsed	5.3 m/s ²
Equivalent vibration level(ahv, eq), rear handle, extended	6.7 m/s ²