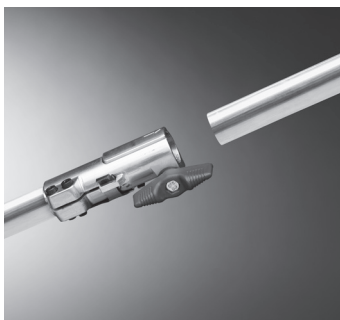




Husqvarna 525P5S

Designed for professionals, the Husqvarna 525P5S pole saw with detachable shaft gives you longer reach and easy transporting between work sites. Low weight, excellent ergonomics and superior balance help you work comfortably even with less accessible vegetation. Easy to manoeuvre, its X-Torq® engine ensures rapid acceleration and high torque with low emissions and low fuel consumption.



Detachable shaft

Detachable shaft for easy transport and storage.

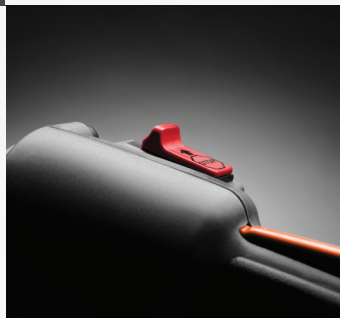


Intuitive controls

The choke and purge are easy to reach and understand.

Auto return stop switch

Stop switch automatically resets to the ON position for trouble-free starting.



Rear impact guard

The rear-impact guard protects the engine from wear and damage.



FEATURES

- Auto return stop switch for easy starting
- Intuitive controls
- Detachable shaft easy transport and storage
- Rear impact guard
- Magnesium clutch housing ensures long service life
- Adjustable, automatic chain lubrication
- Air purge for easier cold starting
- Tool less chain tensioner
- Inertia balancing wheel reduces vibration
- Efficient air filter
- Easy to service and maintain starter
- Skid plate for engine protection
- X-Torq® engine cuts emission and fuel consumption

Technical Specifications	
CAPACITY	
Clutch engagement speed (± 120)	3850 rpm
Clutch engagement upper limit	5800 rpm
Idling speed	3000 rpm
Idling upper limit	3800 rpm
Maximum power speed	8500 rpm
Power output	1.0 kW
Racing speed lower limit	11200 rpm
DIMENSIONS	
Article gross weight	10032 g
Article net weight	7350 g
Bar length	30 mm
Full length, including cutting equipment	340 cm
Length, extended, including cutting equipment	340 cm
Length, transportation mode - metric	195 cm
Size	12"
Tube diameter	24 mm
Tube length	2750 mm
Weight (excl. cutting equipment)	6.4 kg
ENGINE	
Cylinder bore	34 mm
Cylinder displacement	25.4 cm ³
Cylinder stroke	28 mm
Idling speed	3000 rpm
Idling upper limit	3800 rpm
EQUIPMENT	
Chain type	H37
Connected digital function set (calc)	FMS : Released 2019-01-01
Gear ratio	1.06
Pitch	3/8" mini
Source system	PAID
LUBRICANT	
Fuel consumption	395 g/kWh
Fuel consumption	0.395 kg/h
Fuel tank volume	0.51 l
Lubricant type	Husqvarna 2 stroke or equiv. at 50:1
Oil tank volume	0.2 l
Power/fuel type	Gasoline
MATERIALS	
Master pack: Paper + Cardboard	0 g
Metal total	0 g
Paper	49 g
Paper + Cardboard total	49 g
PE total	0 g
PET total	0 g
Plastic foil	0 g
Plastic rigid	23 g
Plastic total	23 g
PS/EPS/HIPS total	0 g
PACKAGING	
Packaging height	280 mm
Packaging length	2460 mm
Packaging volume	20.66 dm ³
Packaging width	30 mm
Quantity in Master pack	1
SOUND AND NOISE	
Sound power level, guaranteed (LWA)	107 dB(A)
Sound power level, measured	107 dB(A)
Sound pressure level at operators ear	90 dB(A)
VIBRATION	
Daily Vibration (Aeqv)	3.7 m/s ²
Daily Vibration Exposure (A8)	0.9 m/s ²

Technical Specifications

Daily Vibration Time (Time factor)	0.5 h
Equivalent vibration level (ahv, eq) front handle	2.3 m/s ²
Equivalent vibration level (ahv, eq) rear handle	3.7 m/s ²