

FIR Unico®



M4

9350198 - 9550198 - 8550198 - 8750198 - 8850198 - 4550198 - 4450198

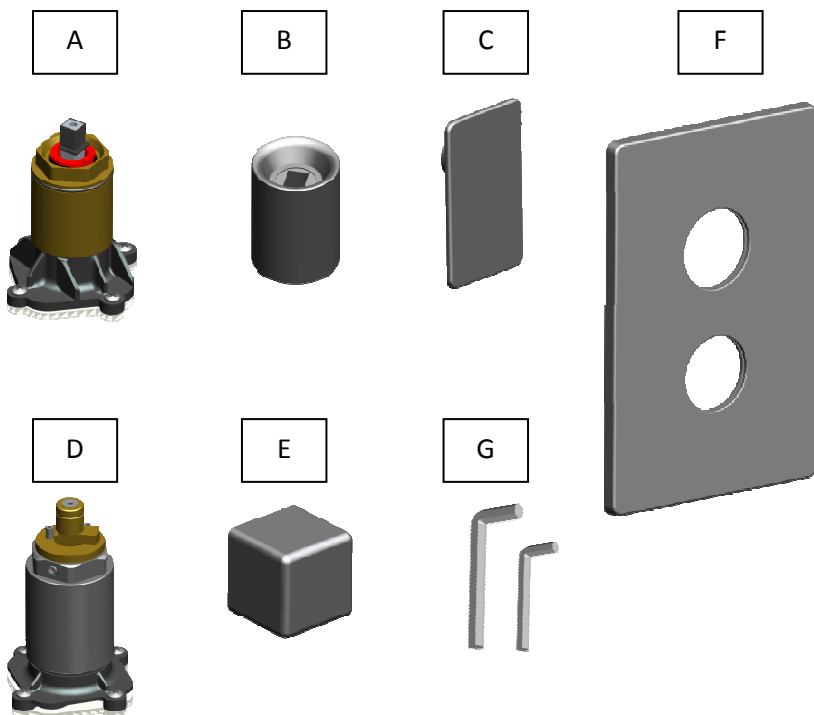
6450198 - 4650198 - 8450198 - 4250198 - 4350198 - 7050198 - 7150198



INDICE / INDEX / INHALTSVERZEICHNIS

Contenuto della scatola / Box contents / Verpackungsinhalt.....	3
Informazioni tecniche / Technical information / Technische Informationen	4
Setup	5
Installazione adattatore mixer/ Mixer adapter installation / Installation des Mischeradapters.....	6
Installazione Adattatore 4 Uscite / 4 Outlets Adapter Installation / Installation Des 4-Wege-Mischeradapters	8
Installazione parti estetiche / External parts / Sichtteile	11
Funzionamento / Working / Funktionsweise	13
Pulizia / Cleaning / Pflege	14

CONTENUTO DELLA SCATOLA / BOX CONTENTS / VERPACKUNGSINHALT



- A. Adattatore mixer / Mixer tap adapter / Mischeradapters
- B. Copripremicartuccia / Push on cartridge cover / Abdeckhülse
- C. Maniglia comando / Mixer lever - handel / Hebel-Griff des Mischers
- D. Adattatore deviatore / Diverter adapter / Umstellungsadapter
- E. Maniglia deviatore / Adapter lever/handle / Hebel-Griff des Adapters
- F. Piastra estetica / Cover plate / Abdeckplatte
- G. Chiave esagonale / Hex wrench / Sechskantschlüssel

**INFORMAZIONI TECNICHE / TECHNICAL INFORMATION /
TECHNISCHE INFORMATIONEN**

Temperatura ottimale acqua calda Hot water optimal temperature Optimaltemperatur vom warmen Wasser	65° (MAX 70° c)
Pressione ottimale di esercizio Optimal operational pressure Optimaler Betriebsdruck	3 Bar (min 1 - max 5)
Differenza di pressione acqua calda fredda Hot and cold water pressure difference Drucksunterschied vom warmen und kalten Wasser	0,1 bar (max 1)

PORTATE / FLOW RATE / DURCHFLUSSMENGE

	0,5 Bar	1 Bar	2 Bar	3 Bar	4 Bar	5 Bar	
xx.5019.8 (4 outs)	6,8	9,8	13,6	16,6	19,4	21,5	L/min

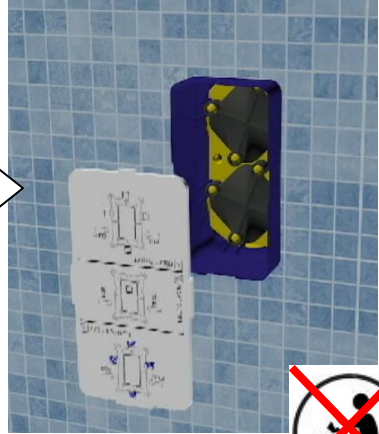
- DATI RILEVATI ALL'USCITA DEL CORPO INCASSO, SOGGETTI A VARIAZIONI A SECONDA DEL TIPO DI IMPIANTO REALIZZATO.
- DATA DETECTED AT THE OUTLET OF THE BUILT-IN PART , SUBJECT TO CHANGES DEPENDING ON THE TYPE OF HYDRAULIC SYSTEM.
- DIE ZUM AUSGANG DES UP-EINBAUKÖRPERS ANGEGEBENEN DATEN VARIIEREN JE NACH TYP DER REALISIERTEN ANLAGE.

SETUP

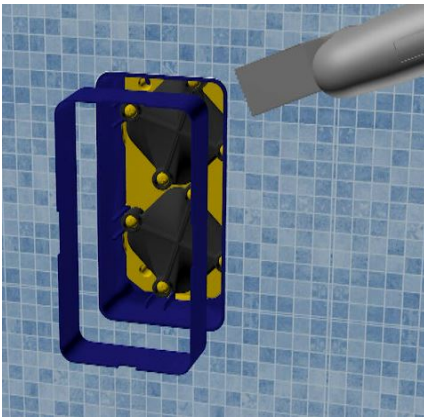
1



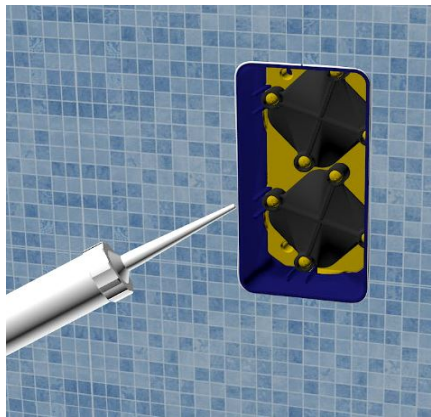
2



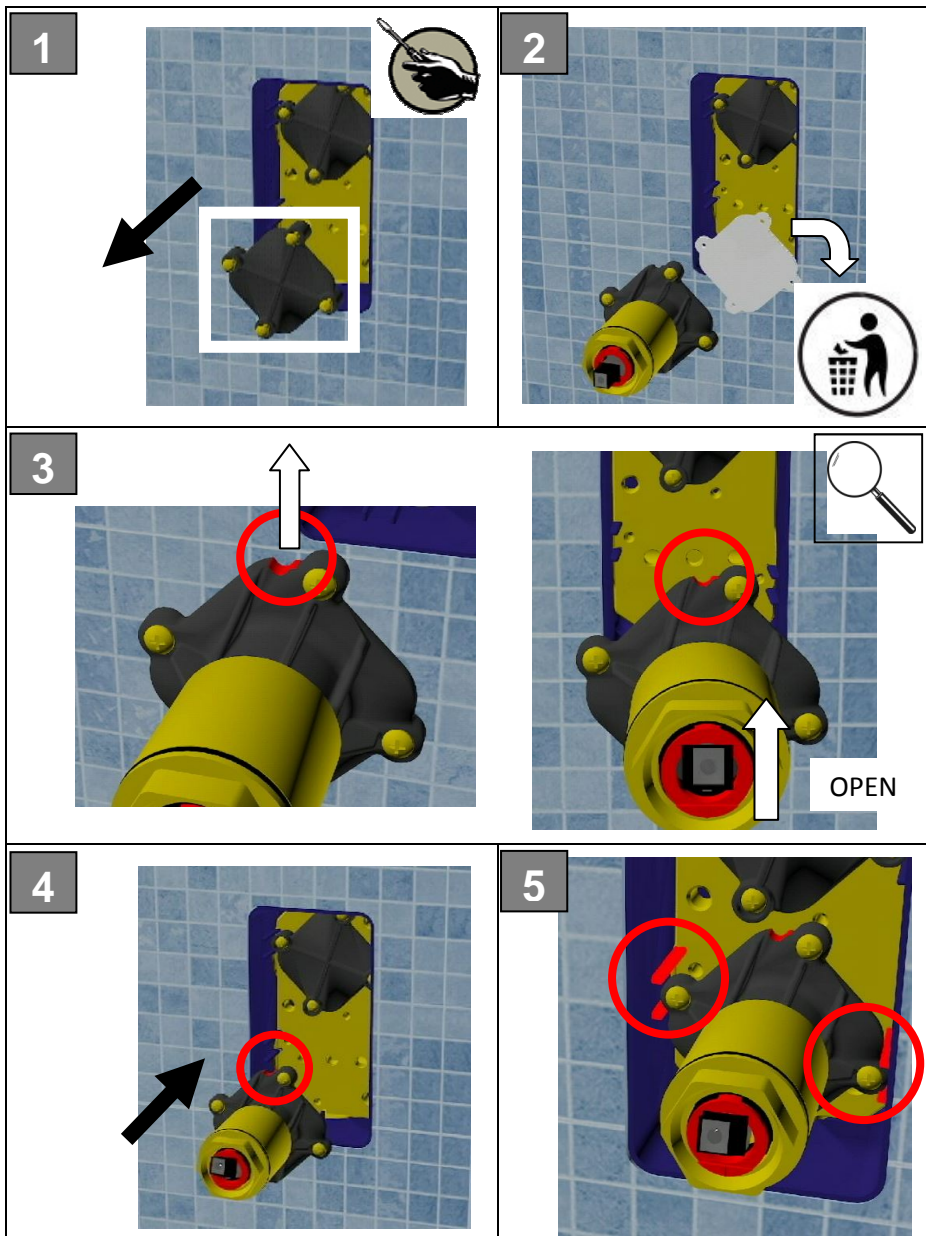
3

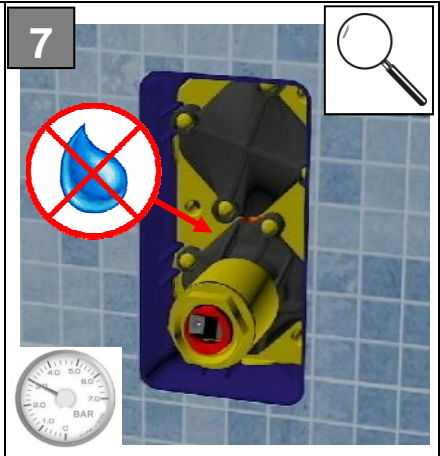
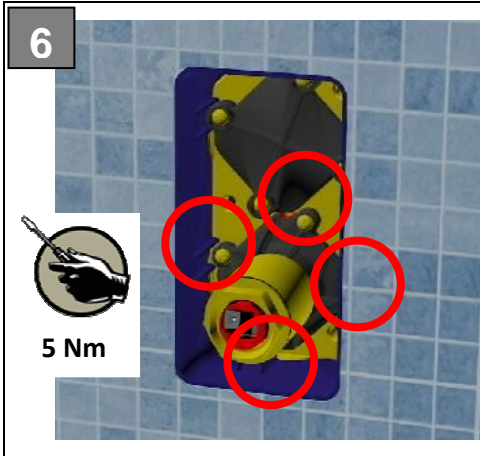


4

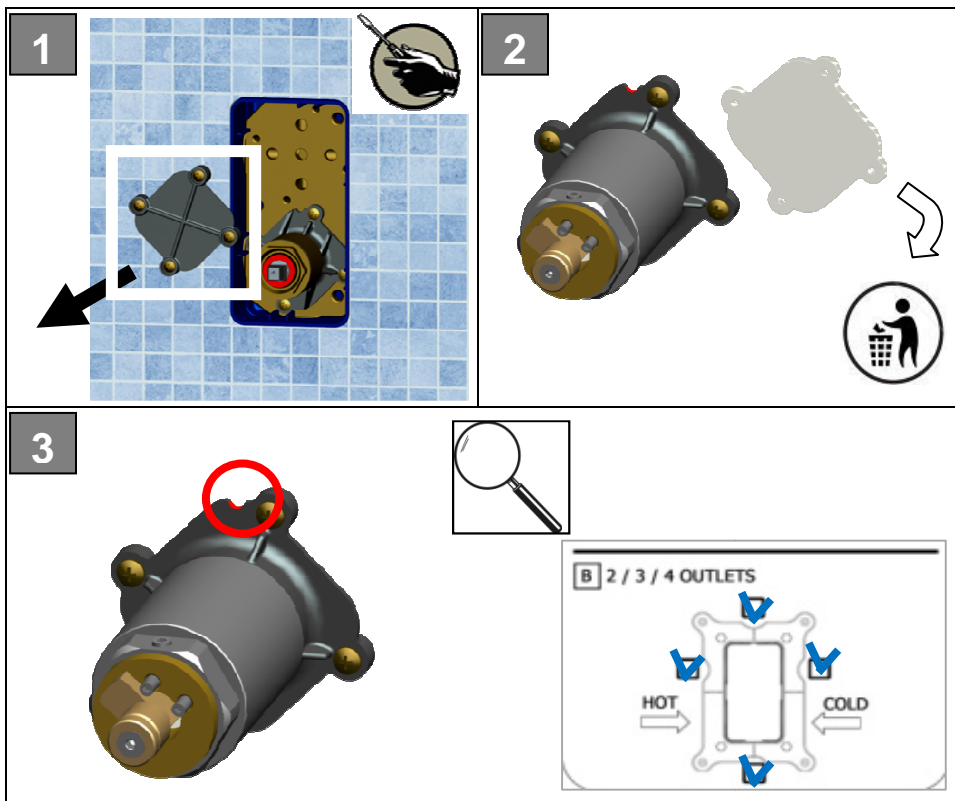


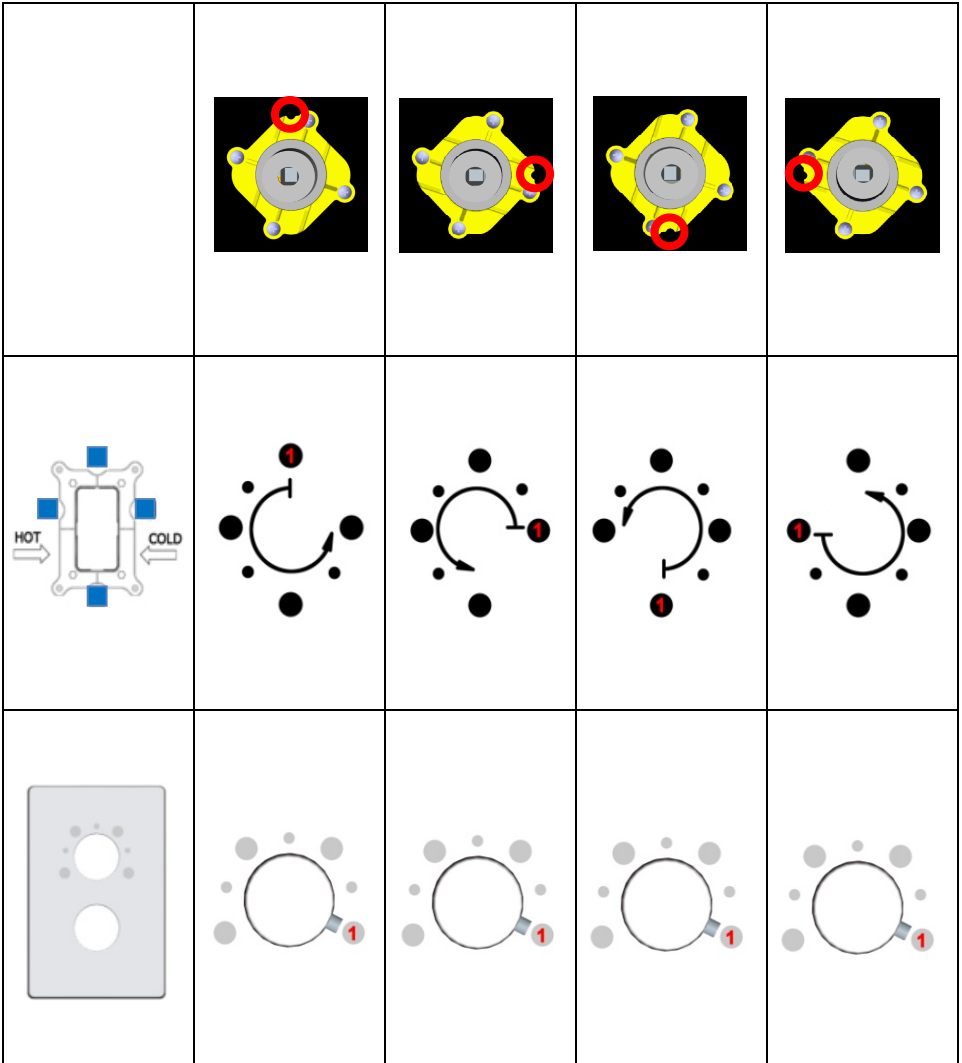
**INSTALLAZIONE ADATTATORE MIXER / MIXER ADAPTER INSTALLATION /
INSTALLATION DES MISCHERADAPTERS**

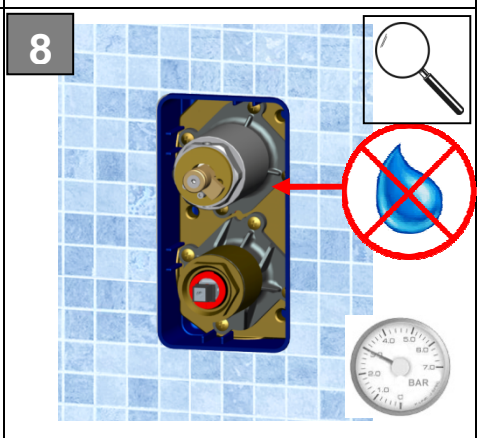
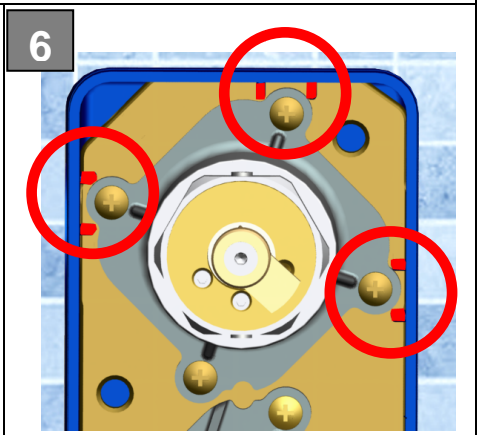
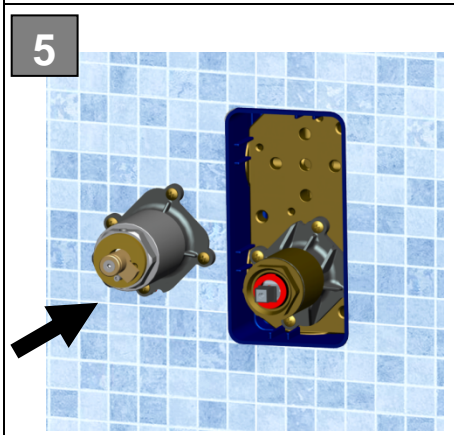
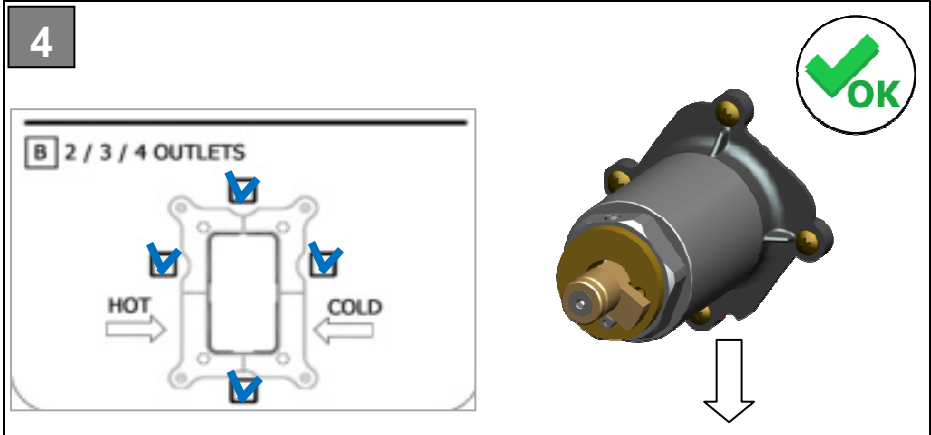




**INSTALLAZIONE ADATTATORE 4 USCITE / 4 OUTLETS ADAPTER
INSTALLATION / INSTALLATION DES 4-WEGE-MISCHERADAPTERS**





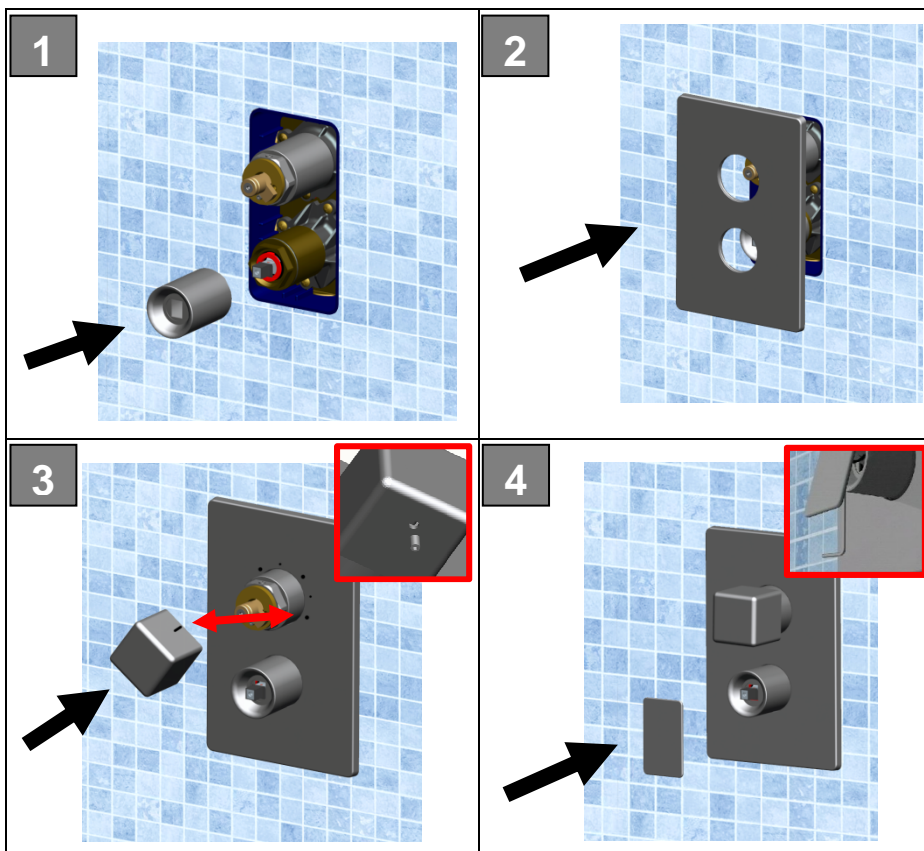


INSTALLAZIONE PARTI ESTETICHE / EXTERNAL PARTS / SICHTTEILE

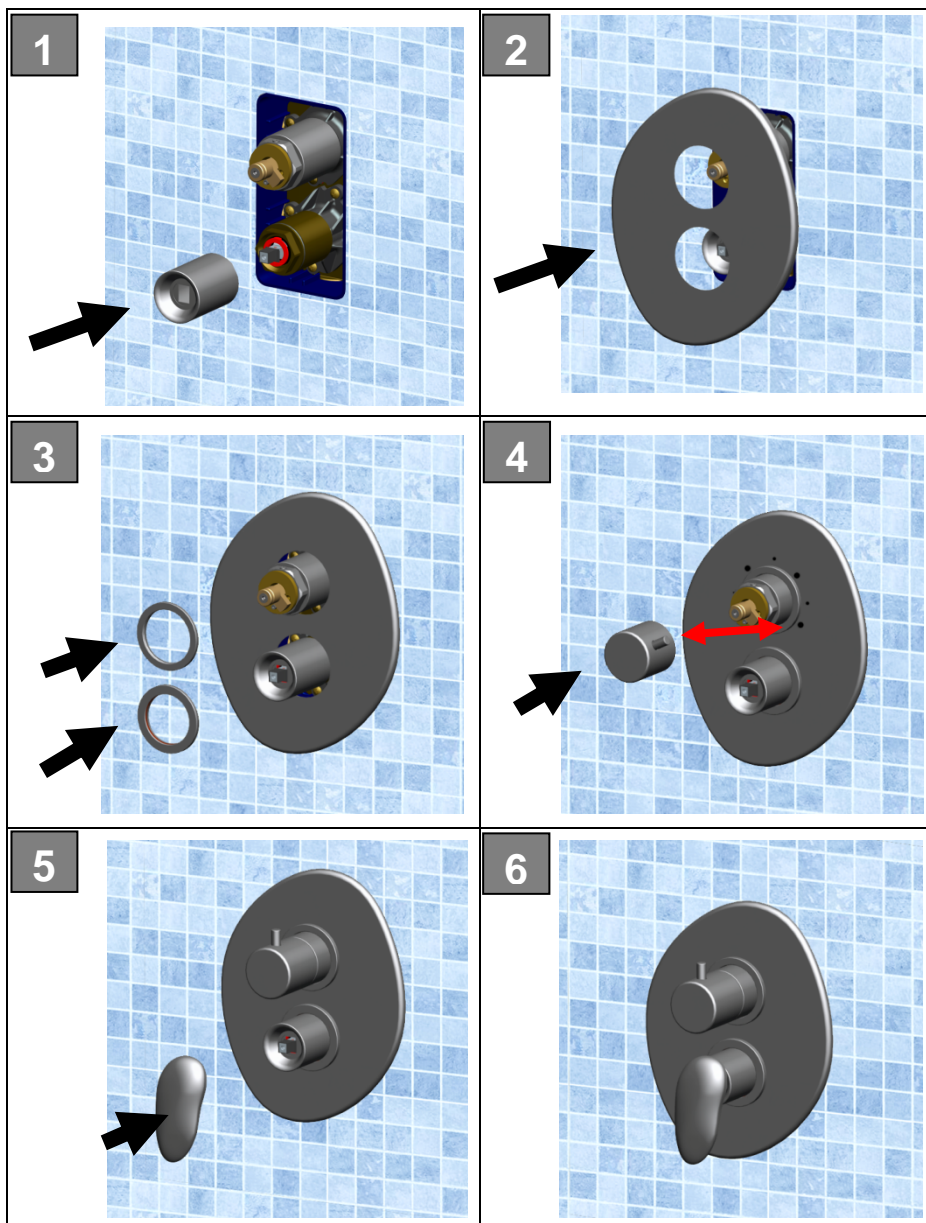
8550198 - 8750198 - 8850198

4550198 - 4450198 - 6450198 - 4650198 - 8450198 - 4250198 - 4350198

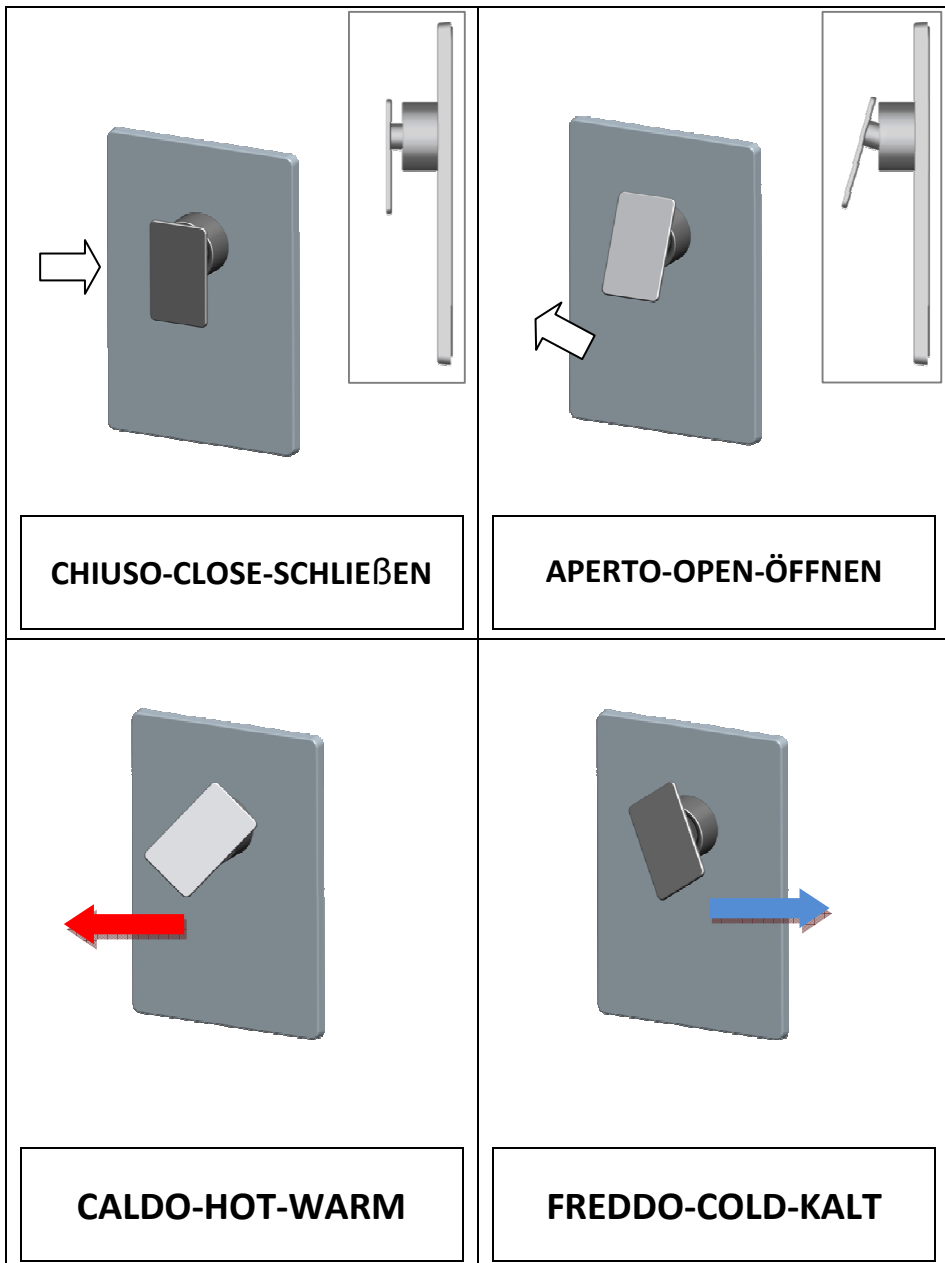
7050198 - 7150198



INSTALLAZIONE PARTI ESTETICHE / EXTERNAL PARTS / SICHTTEILE



FUNZIONAMENTO / WORKING / FUNKTIONSWEISE



PULIZIA / CLEANING / PFLEGE

- Per la pulizia delle parti esterne usare un panno morbido inumidito. Evitare assolutamente l'uso di detersivi o abrasivi che potrebbero danneggiare il rivestimento.
- Wipe external parts using a soft moistened cloth. Do not use both detergents or abrasives that may damage the surface coating.
- Für die Reinigung der Sichtteile ein weiches feuchtes Tuch. Die Anwendung von Reinigungs- und Scheuermitteln, welche die Beschichtung beschädigen können, ist unbedingt zu vermeiden!

Maggiori informazioni sono disponibili sul sito / More information are available on
the website / Mehr Informationen dazu finden Sie auf der website

FIR Unico®



www.firunico.com



Via Borgomanero, 6
28010 Vaprio D'Agogna (NO) - Italy
Tel. (+39) 0321 99.64.23
Fax (+39) 0321 99.64.26
www.fir-italia.it