

# FIR Unico®

PATENT  
PENDING



**9510108 - 9310108 - 9010118 - 8810108**

**8410108 - 6710108 - 6410108 - 6310108**

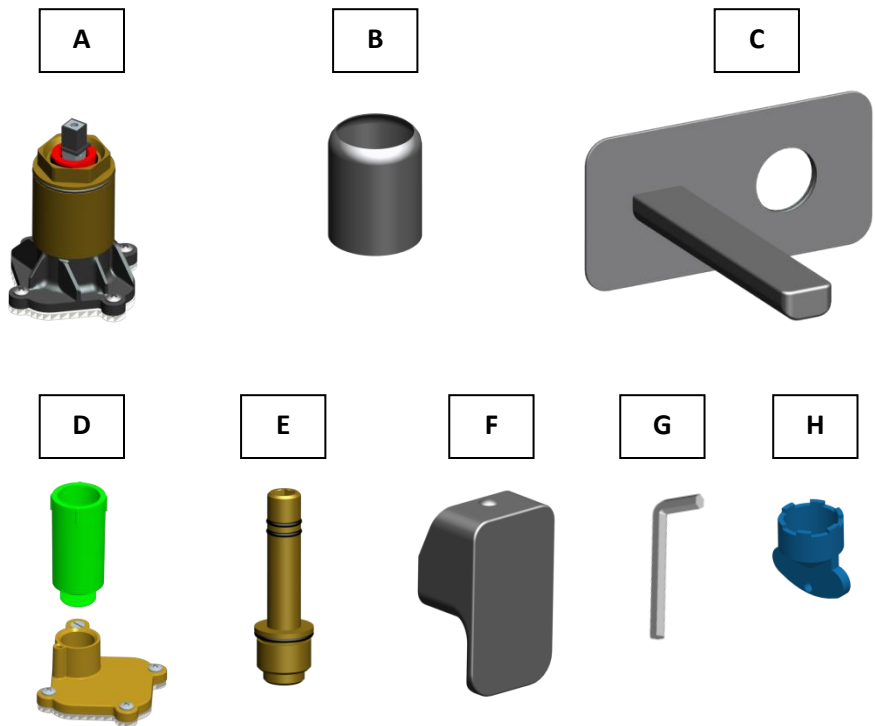
**5210108 - 4610108 - 4510108 - 4410108 - 4310108**



## **INDICE / INDEX / INHALTSVERZEICHNIS**

Contenuto della scatola / Box contents / Verpackungsinhalt.....	<b>3</b>
Informazioni tecniche / Technical information / Technische Informationen .....	<b>4</b>
Setup .....	<b>5</b>
Installazione adattatore mixer/ Mixer adapter installation / Installation des Mischeradapters.....	<b>6</b>
Installazione adattatore bocca / spout adapter installation/ Auslauf-Adapter Installation .....	<b>8</b>
Installazione parti estetiche / External parts / Sichtteile .....	<b>9</b>
Funzionamento / Working / Funktionsweise .....	<b>10</b>
Manutenzione / Maintenance / Wartung .....	<b>11</b>
Pulizia / Cleaning / Pflege .....	<b>11</b>

## CONTENUTO DELLA SCATOLA / BOX CONTENTS / VERPACKUNGSIHALT



- A. Adattatore mixer / Mixer tap adapter / Mischeradapters
- B. Copripremicartuccia / Push on cartridge cover / Abdeckhülse
- C. Piastra estetica / Cover plate / Abdeckplatte
- D. Adattatore bocca / Spout adapter / Auslauf-Adapter
- E. Raccordo idraulico / Hydraulic pipe fitting / Wasseranschlussstück
- F. Maniglia comando / Mixer lever - handel / Hebel-Griff des Mixchers
- G. Chiave esagonale / Hex wrench / Sechskantschlüssel
- H. Chiave aeratore / Aerator wrench / Luftsprudler Schlüssel

## INFORMAZIONI TECNICHE / TECHNICAL INFORMATION /

### TECHNISCHE INFORMATIONEN

<b>Temperatura ottimale acqua calda Hot water optimal temperature Optimaltemperatur vom warmen Wasser</b>	<b>65° (MAX 70° c)</b>
<b>Pressione ottimale di esercizio Optimal operational pressure Optimaler Betriebsdruck</b>	<b>3 Bar (min 1 - max 5)</b>
<b>Differenza di pressione acqua calda fredda Hot and cold water pressure difference Drucksunterschied vom warmen und kalten Wasser</b>	<b>0,1 bar (max 1)</b>

### PORTATE / FLOW RATE / DURCHFLUSSMENGE

	<b>0,5 Bar</b>	<b>1 Bar</b>	<b>2 Bar</b>	<b>3 Bar</b>	<b>4 Bar</b>	<b>5 Bar</b>	
<b>xx.1010.8 (Front outlet)</b>	6,5	9,5	13,6	16,8	19,5	21,5	<b>L/min</b>

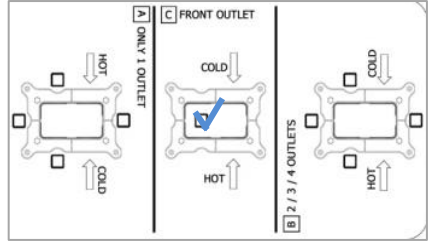
- DATI RILEVATI ALL'USCITA DEL CORPO INCASSO, SOGGETTI A VARIAZIONI A SECONDA DEL TIPO DI IMPIANTO REALIZZATO.
- DATA DETECTED AT THE OUTLET OF THE BUILT-IN PART , SUBJECT TO CHANGES DEPENDING ON THE TYPE OF HYDRAULIC SYSTEM.
- DIE ZUM AUSGANG DES UP-EINBAUKÖRPERS ANGEGBENEN DATEN VARIIEREN JE NACH TYP DER REALISIERTEN ANLAGE.

# SETUP

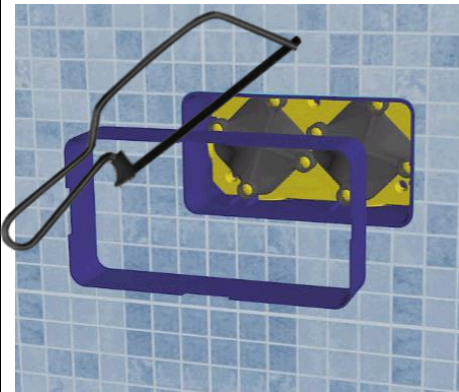
1



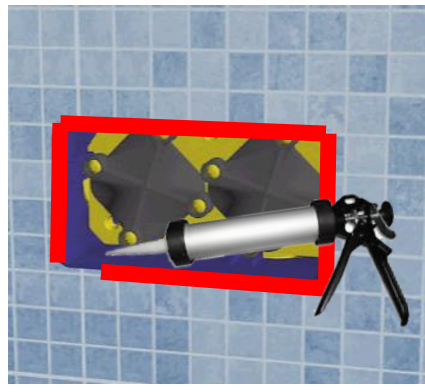
2



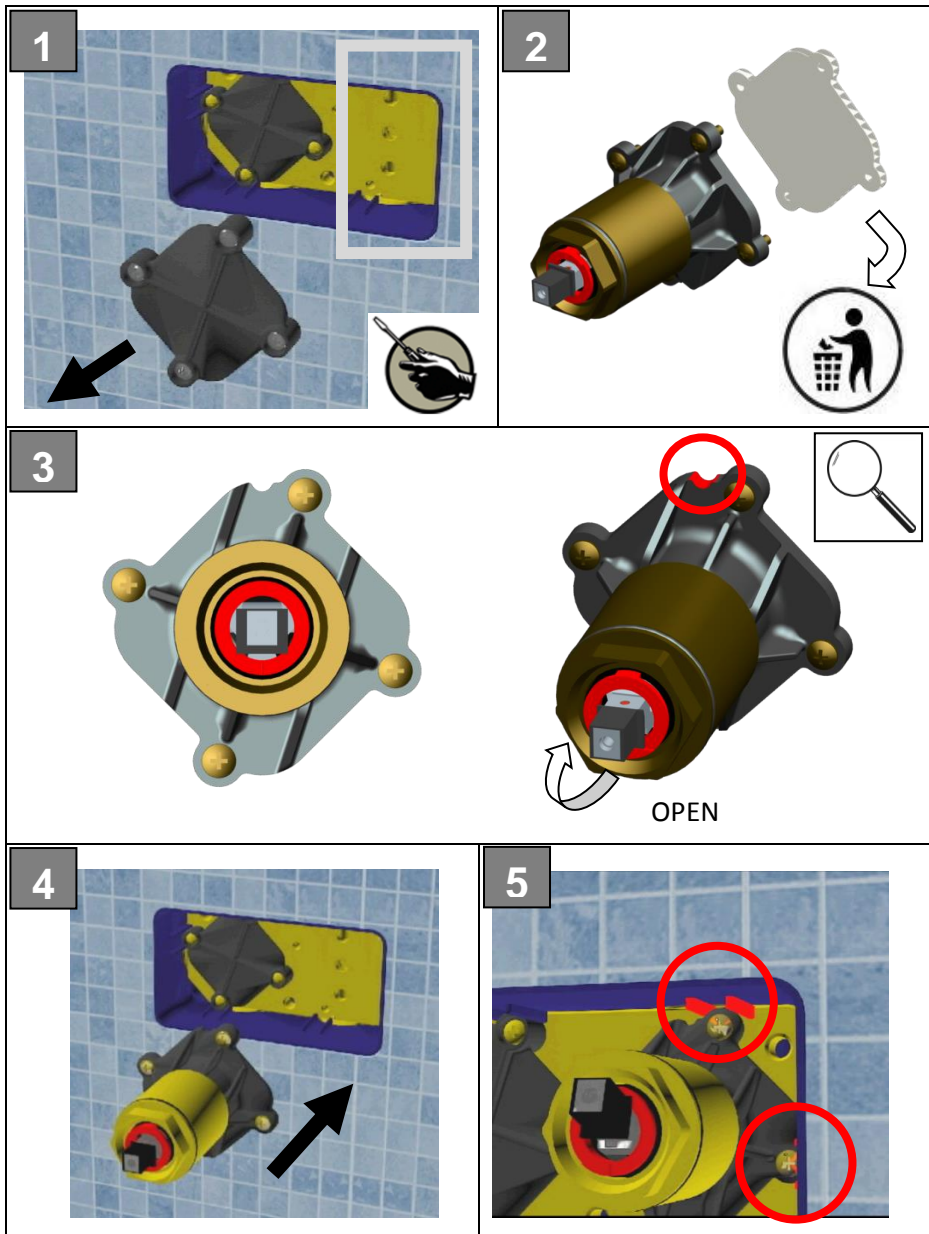
3



4

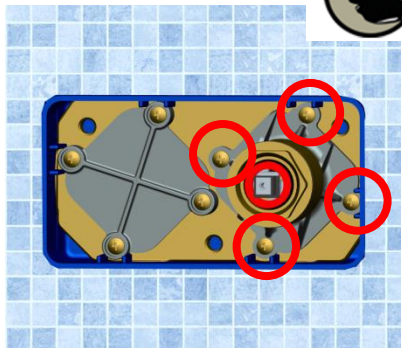


**INSTALLAZIONE ADATTATORE MIXER / MIXER ADAPTER INSTALLATION /  
INSTALLATION DES MISCHERADAPTERS**

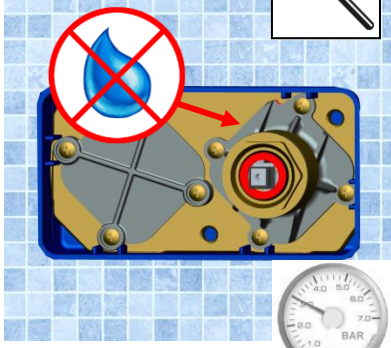


6

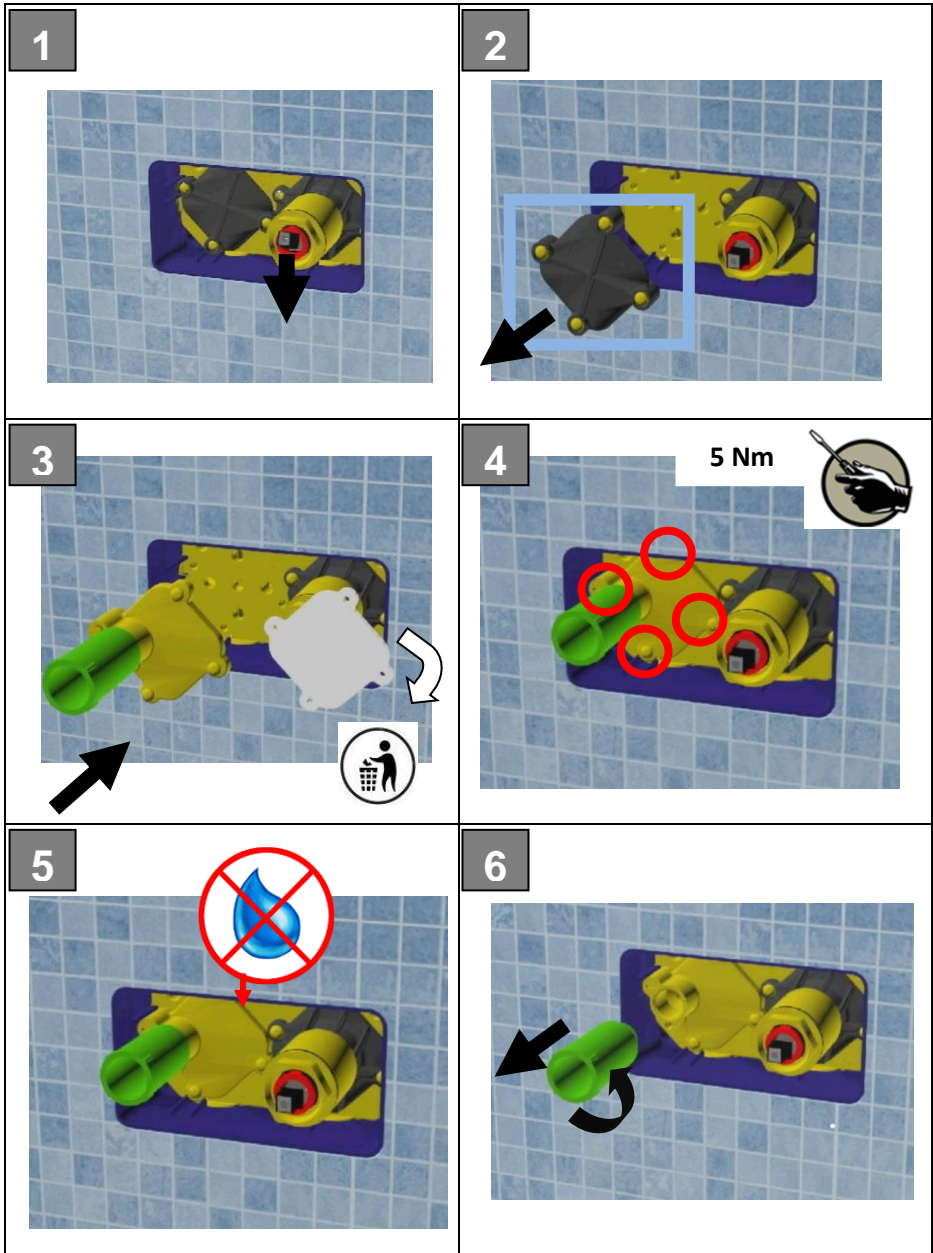
5 Nm



7



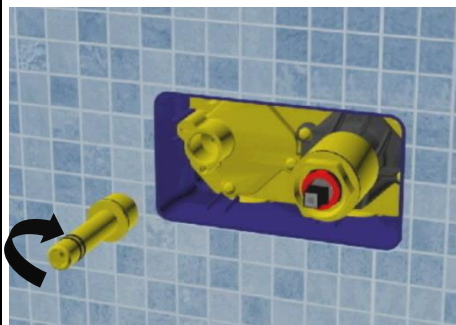
**INSTALLAZIONE ADATTATORE BOCCA / SPOUT ADAPTER INSTALLATION /  
AUSLAUF-ADAPTER INSTALLATION**



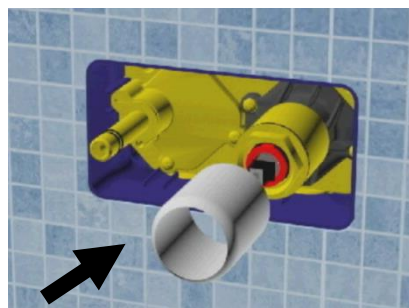


## INSTALLAZIONE PARTI ESTETICHE / EXTERNAL PARTS / SICHTTEILE

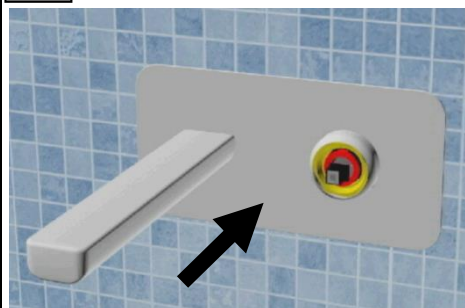
1



2



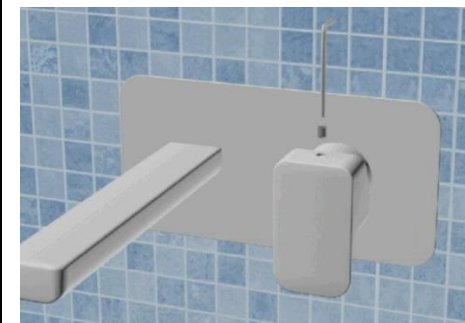
3



4



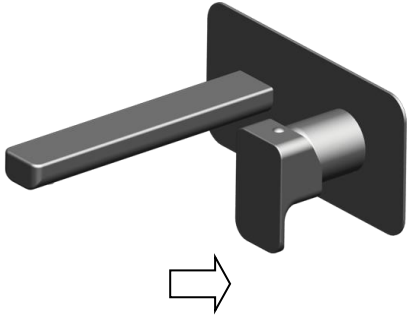
5



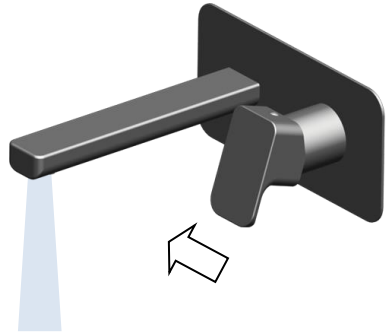
6



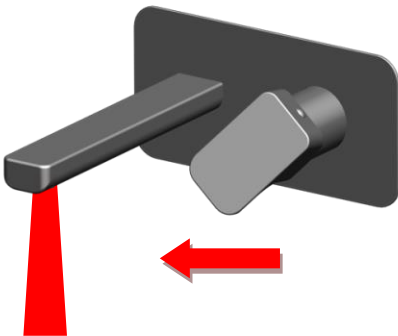
**FUNZIONAMENTO / WORKING / FUNKTIONSWEISE**



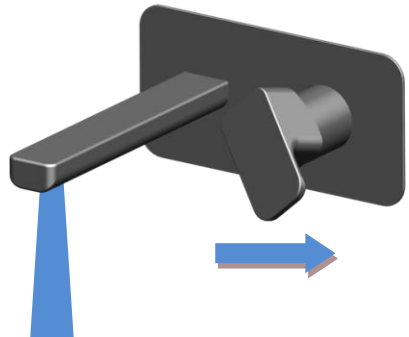
**CHIUSO-CLOSE-SCHLIEßEN**



**APERTO-OPEN-ÖFFNEN**

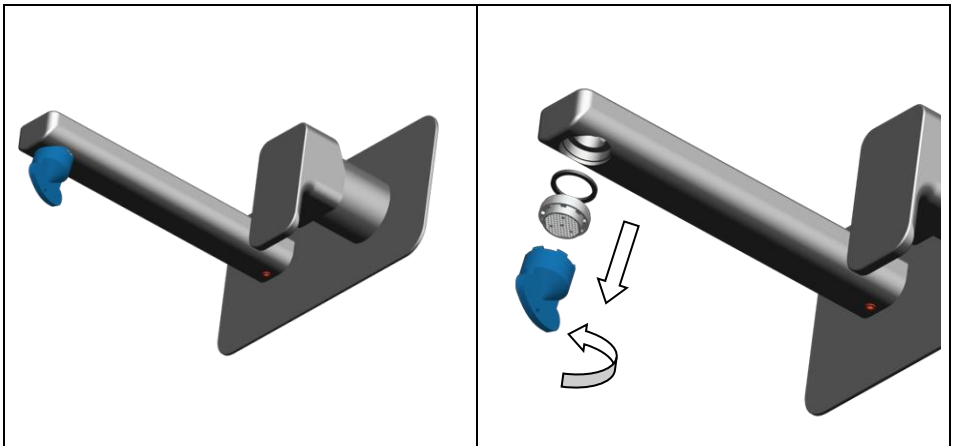


**CALDO-HOT-WARM**



**FREDDO-COLD-KALT**

## MANUTENZIONE / MAINTENANCE / WARTUNG



## PULIZIA / CLEANING / PFLEGE

- Per la pulizia delle parti esterne usare un panno morbido inumidito. Evitare assolutamente l'uso di detersivi o abrasivi che potrebbero danneggiare il rivestimento.
- Wipe external parts using a soft moistened cloth. Do not use both detergents or abrasives that may damage the surface coating.
- Für die Reinigung der Sichtteile ein weiches feuchtes Tuch. Die Anwendung von Reinigungs-und Scheuermittel, welche die Beschichtung beschädigen können, ist unbedingt zu vermeiden!

Maggiori informazioni sono disponibili sul sito / More information are available on  
the website / Mehr Informationen dazu finden Sie auf der website

**FIR Unico®**



**[www.firunico.com](http://www.firunico.com)**



Via Borgomanero, 6  
28010 Vaprio D'Agogna (NO) - Italy  
Tel. (+39) 0321 99.64.23  
Fax (+39) 0321 99.64.26

**[www.fir-italia.it](http://www.fir-italia.it)**